

Converting Colors

HunterLab(85.2342, 4.1251,
8.7203)

Have a look what the booklet for
HunterLab(85.2342, 4.1251, 8.7203)
contains.

HunterLab(85.3189, 3.8042, 8.8938)	3
<i>Conversions</i>	4
<i>Details</i>	6
<i>Harmonies</i>	12
<i>Previews</i>	24
<i>Color Blindness Simulation</i>	28
<i>CSS Examples</i>	31

Color

**HunterLab(85.3189, 3.8042,
8.8938)**

Conversions

Conversions Part 1

Format	Color
Hex	F2D8D5
RGB	242, 216, 213
RGB Percent	95%, 85%, 84%
CMY	0.0510, 0.1529, 0.1647
CMYK	0.00, 0.11, 0.12, 0.05
HSL	6°, 53%, 89%
HSV	6°, 12%, 95%
XYZ	73.1842, 72.7931, 73.1441
YIQ	223.4320, 16.4590, 4.5790

Conversions

Conversions Part 2

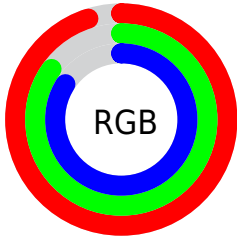
Format	Color
R _Y B	242, 216, 213
Decimal	15915221
CIE Lab	88.35, 8.50, 4.75
CIE LCh	88, 9.735, 29.223
Yxy	72.7964, 0.3340, 0.3322
Android (android.graphics.Color)	4294105301 (0xFFFF2D8D5)
YUV	223.4320, -5.1430, 16.2841
Hunter-Lab	85.3189, 3.8042, 8.8938

Details

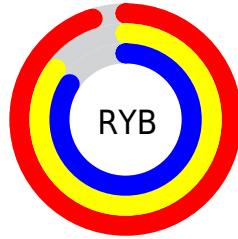
The HunterLab color $85.3189, 3.8042, 8.8938$ is a light color, and the websafe version is hex FFCCCC . A complement of this color would be $90.7130, -12.4777, 0.7726$, and the grayscale version is $86.1079, -4.5945, 4.6784$.

A 20% lighter version of the original color is $100.0000, -5.3358, 5.4332$, and $61.9657, 4.3830, 7.3087$ is the 20% darker color. If you saturate the color by 10%, you get $78.2726, 11.5825, 12.0512$, and if you desaturate by 10%, it is $92.7241, -3.6016, 5.7431$.

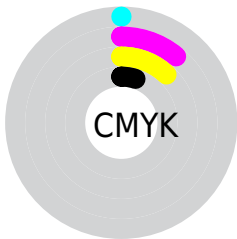
Distribution



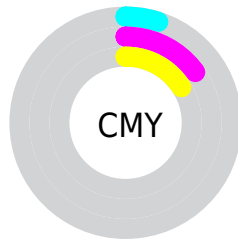
- Red (95%)
- Green (85%)
- Blue (84%)



- Red (95%)
- Yellow (85%)
- Blue (84%)



- Cyan (0%)
- Magenta (11%)
- Yellow (12%)
- Black (5%)



- Cyan (5%)
- Magenta (15%)
- Yellow (16%)

Brightness & Saturation Gradients

These gradients show how the HunterLab color 85.3189, 3.8042, 8.8938 changes by changing the brightness by 10 percent. The first figure shows a shift by +10% for each color and the second figure -10%.

Similar to the brightness gradients but the following saturation gradients show a change of the HunterLab color 85.3189, 3.8042, 8.8938 by changing the saturation by 10% instead.

85.3189, 3.8042,
8.8938

85.3189, 3.8042,
8.8938

216.8660, -0.2745,
17.6779

73.3549, 4.0460,
8.0236

110.9901, 3.1691,
10.7019

62.0076, 4.2368,
7.1731

124.6442, 2.7875,
11.6369

51.3144, 4.3685,
6.3430

138.8163, 2.3658,
12.5929

41.3182, 4.4341,
5.5323

153.4882, 1.9063,
13.5696

32.0714, 4.4243,
4.7390

168.6435, 1.4110,
14.5667

23.6407, 4.3262,
3.9594

184.2671, 0.8815,

16.1144, 4.1209,

15.5839

3.1861

200.3455, 0.3192,
16.6211

■ 9.6178, 3.7782,
2.5758

0.0000, INF, NaN

■ 85.3189, 3.8042,
8.8938

■ 85.3189, 3.8042,
8.8938

■ 78.2726, 11.5825,
12.0512

■ 92.7241, -3.6016,
5.7431

■ 71.6388, 19.7579,
15.1854

■ 98.8015, -9.5301,
3.9409

■ 65.4923, 28.3046,
18.2496

■ 59.9210, 37.1242,
21.1632

■ 55.0261, 45.9969,
23.8020

■ 50.9153, 54.5364,
25.9972

■ 47.6871, 62.1848,
27.5592

■ 45.4034, 68.3016,
28.3450

■ 44.2445, 71.7138,
28.5187

Harmonies

Analogous

The Analogous color harmony consists of three colors that are next to each other on the color wheel.



85.3208, 5.0461, 4.5230



85.3189, 3.8042, 8.8938



85.3208, 0.3059, 11.9746

Triad

The Triadic color harmony groups three colors that are evenly spaced from another and form a triangle on the color wheel.



85.3208, 3.8017, 8.8952



85.3208, -12.4833, 9.0939



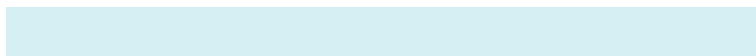
85.3208, -4.6844, -4.7886

Complementary

The Complementary color scheme is a pair of colors which are on the opposite of each other on the color wheel.



85.3189, 3.8042, 8.8938



90.7130, -12.4777, 0.7726

Split Complementary

Split-complementary colors differ from the complementary color scheme. The scheme consists of three colors, the original color and two neighbors of the complement color.



85.3208, -9.3135, -3.4004



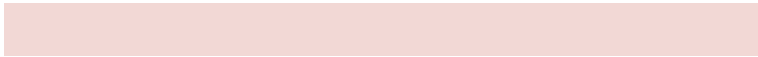
85.3189, 3.8042, 8.8938



85.3208, -13.7535, 4.7653

Square

The Square scheme is like the rectangle color scheme, but the four colors are evenly spaced on the color wheel.



85.3208, 3.8017, 8.8952



85.3208, -9.0976, 12.0847



85.3208, -12.6060, 0.1627



85.3208, 0.0804, -3.5332

Rectangle

The Rectangle color scheme consists of four colors that form a rectangle on the color wheel.



85.3189, 3.8042, 8.8938



85.3208, -2.7925, 12.9691



85.3208, -12.6060, 0.1627



85.3208, -6.3074, -4.6144

Sweetspot

The Sweet Spot groups the original color and five complimentary colors.



85.3208, 3.8017, 8.8952



96.7806, -2.2595, 6.7720



85.2671, 9.8994, -4.1229



44.4977, -0.7747, 3.2497

0.0000, NaN, NaN



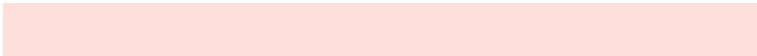
46.2646, -2.4686, 2.5136

Same Dimension

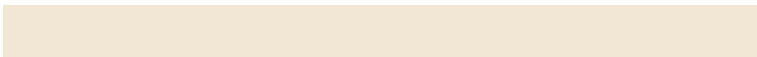
The Same Dimension uses a secret algorithm to generate beautiful new colors.



85.3208, 3.8017, 8.8952



88.9746, 5.6984, 10.1287



89.7212, -3.7463, 13.6200



40.0278, 0.8762, 3.7214



32.5691, 52.0948, 20.9809



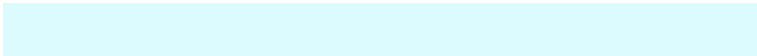
9.8479, 13.5722, 6.3058

Inverse Universe

The Inverse Universe completely reimagines the original color for something new.



90.7130, -12.4777, 0.7726



95.6606, -14.4987, 0.0544



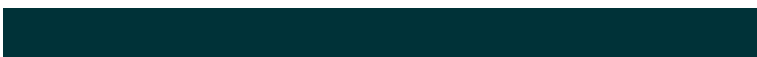
86.1350, -5.0810, -4.8370



41.9913, -5.0487, 0.7643



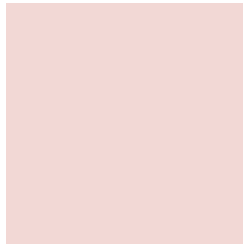
54.9570, -24.7538, -15.2551



16.1010, -7.4541, -4.0336

Previews

White Background



This preview shows how the HunterLab color 85.3189, 3.8042, 8.8938 looks on a white background.

Color Contrast Check

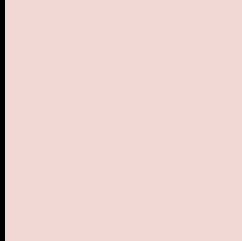
Large Text (above 18pt) WCAG AA × Fail

Any Text WCAG AA × Fail

Large Text (above 18pt) WCAG AAA × Fail

Any Text WCAG AAA × Fail

Black Background



This preview shows how the HunterLab color 85.3189, 3.8042, 8.8938 looks on a black background.

Color Contrast Check

Large Text (above 18pt) WCAG AA ✓ Pass

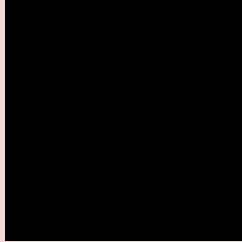
Any Text WCAG AA ✓ Pass

Large Text (above 18pt) WCAG AAA ✓ Pass

Any Text WCAG AAA ✓ Pass

If you want to check with other color combinations, try the [Color Contrast Checker](#).

HunterLab 85.3189, 3.8042, 8.8938 Background



This preview shows how black text looks on a background with the HunterLab color 85.3189, 3.8042, 8.8938.



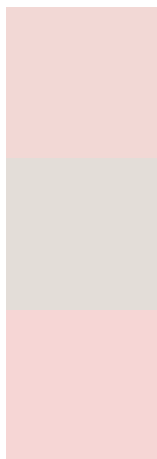
This preview shows how white text looks on a background with the HunterLab color 85.3189, 3.8042,

8.8938.

Color Blindness Simulation

Color vision deficiency is a very complex topic, and I could not describe the different causes any better than Wikipedia does, so if you want to learn more, you should check out their [article about color blindness](#).

Dichromacy



Original Color

85.3189, 3.8042, 8.8938

Protanopia

85.4410, -3.4274, 7.5067

Deuteranopia

85.1411, 6.2773, 8.7362



Tritanopia

85.1673, 8.9554, 0.5200

Trichromacy



Original Color

85.3189, 3.8042, 8.8938

Protanomaly

85.2790, -0.8858, 7.8356

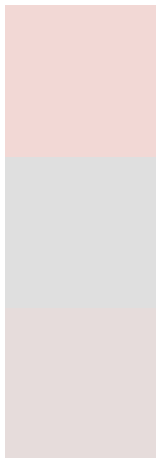
Deuteranomaly

85.3331, 5.3910, 8.9377

Tritanomaly

85.1643, 7.0335, 3.5054

Monochromacy



Original Color

85.3189, 3.8042, 8.8938

Achromatopsia

85.9017, -4.5835, 4.6672

Achromatomaly

85.5125, -1.4143, 6.2009

CSS Examples

Text

The CSS property to change the color of the text to HunterLab 85.3189, 3.8042, 8.8938 is called "color". The color property can be set on classes, ids or directly on the HTML element.

This example shows how text in the color `rgb(242, 216, 213)` looks like.

```
.text, #text, p{  
    color:rgb(242, 216, 213)  
}
```

If you want to add a text shadow in that color use the text-shadow property, you can generate a text shadow directly with our [CSS Text Shadow Generator](#).

Here you see how black text with a 4 pixel rgb(242, 216, 213) colored shadow looks like.

```
.shadow{ text-shadow: 4px 4px 2px rgb(242, 216, 213) }
```

Border

The CSS property to change the border of an element to HunterLab 85.3189, 3.8042, 8.8938 is called "border".

The border property can be set on classes, ids or directly on the HTML element.

This example shows the color as border, it can be applied via the CSS property "border" or "border-color".

```
.border, #border, table{ border:4px solid rgb(242, 216, 213) }
```


If only the border color should be changed use the property `border-color`.

```
.border{ border-color:rgb(242, 216, 213) }
```

If you want to add a box shadow in that color use:

Here you see how a box with a 4 pixel `rgb(242, 216, 213)` colored shadow looks like.

```
.boxshadow{ -moz-box-shadow:4px 4px 4px  
4px rgb(242, 216, 213); -webkit-box-  
shadow:4px 4px 4px 4px rgb(242, 216, 213);  
box-shadow:4px 4px 4px 4px rgb(242, 216,  
213) }
```

Background

The CSS property to change the background color of an element to HunterLab 85.3189, 3.8042, 8.8938 is called "background". The background property can be set on classes, ids or directly on the HTML element.

```
.background, #background, body{  
background: rgb(242, 216, 213) }
```

If only the background color should be changed can be used:

```
.background{ background-color: rgb(242,  
216, 213) }
```

This example shows the color as background, it is applied via the CSS property "background".

To optimize and compress your CSS code, you can use our [online CSS compressor and optimizer](#) based on csstidy. If you want to create a linear or radial gradient as background or border, check our [CSS Gradient Generator](#).

Hey! You found this booklet interesting? Support Converting Colors with the new Membership Option!

The pro membership hides all ads, plus gives you double the colors in the color bucket, and more awesome pro features!

[Learn more, Memberships starting at \\$2.50/m!](#)

**Follow me
on Twitter!**

@ConvertingColor