

Converting Colors

HunterLab(85.3197, 3.9485,
6.6315)

Have a look what the booklet for
HunterLab(85.3197, 3.9485, 6.6315)
contains.

HunterLab(85.2637, 3.9200, 6.4839)	3
<i>Conversions</i>	4
<i>Details</i>	6
<i>Harmonies</i>	12
<i>Previews</i>	24
<i>Color Blindness Simulation</i>	28
<i>CSS Examples</i>	31

Color

**HunterLab(85.2637, 3.9200,
6.4839)**

Conversions

Conversions Part 1

Format	Color
Hex	F0D8DA
RGB	240, 216, 218
RGB Percent	94%, 85%, 85%
CMY	0.0588, 0.1529, 0.1451
CMYK	0.00, 0.10, 0.09, 0.06
HSL	355°, 44%, 89%
HSV	355°, 10%, 94%
XYZ	73.1460, 72.6990, 76.5068
YIQ	223.4040, 13.6620, 5.7100

Conversions

Conversions Part 2

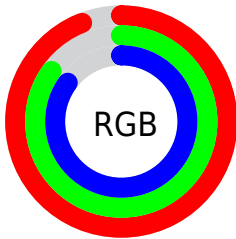
Format	Color
R _Y B	240, 216, 218
Decimal	15784154
CIE Lab	88.31, 8.61, 2.03
CIE LCh	88, 8.847, 13.273
Yxy	72.7022, 0.3290, 0.3270
Android (android.graphics.Color)	4293974234 (0xFFF0D8DA)
YUV	223.4040, -2.6642, 14.5547
Hunter-Lab	85.2637, 3.9200, 6.4839

Details

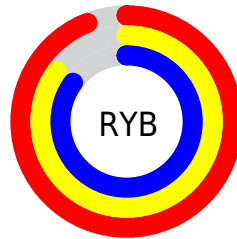
The HunterLab color $85.2637, 3.9200, 6.4839$ is a light color, and the websafe version is hex `FFCCCC`. A complement of this color would be $91.1559, -12.8267, 3.3305$, and the grayscale version is $86.0861, -4.5933, 4.6772$.

A 20% lighter version of the original color is $100.0000, -5.3358, 5.4332$, and $61.9067, 4.4690, 5.0392$ is the 20% darker color. If you saturate the color by 10%, you get $77.5968, 13.1534, 8.1425$, and if you desaturate by 10%, it is $93.3492, -4.9825, 5.0715$.

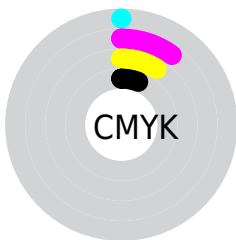
Distribution



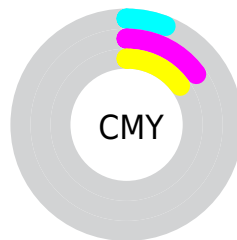
- Red (94%)
- Green (85%)
- Blue (85%)



- Red (94%)
- Yellow (85%)
- Blue (85%)



- Cyan (0%)
- Magenta (10%)
- Yellow (9%)
- Black (6%)



- Cyan (6%)
- Magenta (15%)
- Yellow (15%)

Brightness & Saturation Gradients

These gradients show how the HunterLab color 85.2637, 3.9200, 6.4839 changes by changing the brightness by 10 percent. The first figure shows a shift by +10% for each color and the second figure -10%.

Similar to the brightness gradients but the following saturation gradients show a change of the HunterLab color 85.2637, 3.9200, 6.4839 by changing the saturation by 10% instead.

85.2637, 3.9200,
6.4839

85.2637, 3.9200,
6.4839

216.7907, -0.1179,
14.3306

73.3024, 4.1565,
5.7414

110.9299, 3.2952,
8.0550

61.9579, 4.3415,
5.0260

124.5815, 2.9183,
8.8791

51.2678, 4.4672,
4.3400

138.7514, 2.5013,
9.7285

41.2748, 4.5264,
3.6844

153.4211, 2.0463,
10.6023

32.0316, 4.5097,
3.0603

168.5742, 1.5553,
11.5000

23.6047, 4.4041,
2.4684

184.1957, 1.0299,

16.0827, 4.1906,

12.4210

1.9087

200.2721, 0.4718,
13.3647

■ 9.5911, 3.8387,
1.4028

0.0000, INF, NaN

■ 85.2637, 3.9200,
6.4839

■ 85.2637, 3.9200,
6.4839

■ 77.5968, 13.1534,
8.1425

■ 93.3492, -4.9825,
5.0715

■ 70.4191, 22.7181,
10.0766

■ 98.6233, -10.1586,
3.7174

■ 63.8281, 32.5377,
12.3106

■ 57.9405, 42.4165,
14.8393

■ 52.8909, 51.9689,
17.6027

■ 48.8184, 60.5757,
20.4552

■ 45.8363, 67.4481,
23.1557

■ 43.9840, 71.8852,
25.4122

■ 43.0998, 73.9261,
26.9439

Harmonies

Analogous

The Analogous color harmony consists of three colors that are next to each other on the color wheel.



85.2656, 3.7793, 2.2699



85.2637, 3.9200, 6.4839



85.2656, 1.7531, 10.0240

Triad

The Triadic color harmony groups three colors that are evenly spaced from another and form a triangle on the color wheel.



85.2656, 3.9176, 6.4853



85.2656, -10.3292, 10.3466



85.2656, -6.9981, -3.5108

Complementary

The Complementary color scheme is a pair of colors which are on the opposite of each other on the color wheel.



85.2637, 3.9200, 6.4839



91.1559, -12.8267, 3.3305

Split Complementary

Split-complementary colors differ from the complementary color scheme. The scheme consists of three colors, the original color and two neighbors of the complement color.



85.2656, -10.6832, -1.1171



85.2637, 3.9200, 6.4839



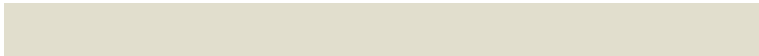
85.2656, -12.5793, 6.9464

Square

The Square scheme is like the rectangle color scheme, but the four colors are evenly spaced on the color wheel.



85.2656, 3.9176, 6.4853



85.2656, -6.5059, 12.1752



85.2656, -12.7075, 2.7550



85.2656, -2.5847, -3.6499

Rectangle

The Rectangle color scheme consists of four colors that form a rectangle on the color wheel.



85.2637, 3.9200, 6.4839



85.2656, -0.6794, 11.5827



85.2656, -12.7075, 2.7550



85.2656, -8.3609, -2.9378

Sweetspot

The Sweet Spot groups the original color and five complimentary colors.



85.2656, 3.9176, 6.4853



97.3510, -2.5027, 5.8639



85.7808, 7.0864, -3.9984



44.7143, -0.8051, 2.7678

0.0000, NaN, NaN



46.2646, -2.4686, 2.5136

Same Dimension

The Same Dimension uses a secret algorithm to generate beautiful new colors.



85.2656, 3.9176, 6.4853



89.6268, 6.1866, 7.2874



88.2488, -1.6647, 10.6994



39.7243, 1.5970, 2.9700



31.9003, 54.7408, 19.7562



9.2405, 15.9352, 5.1132

Inverse Universe

The Inverse Universe completely reimagines the original color for something new.



85.2656, 3.9176, 6.4853



89.6268, 6.1866, 7.2874



88.0264, -7.3417, -1.4137



39.7243, 1.5970, 2.9700



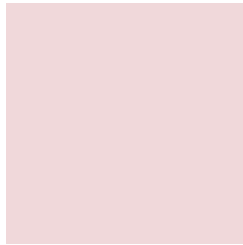
31.9003, 54.7408, 19.7562



9.2405, 15.9352, 5.1132

Previews

White Background



This preview shows how the HunterLab color 85.2637, 3.9200, 6.4839 looks on a white background.

Color Contrast Check

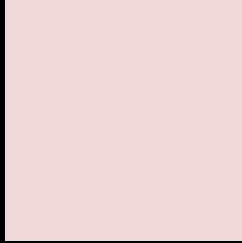
Large Text (above 18pt) WCAG AA × Fail

Any Text WCAG AA × Fail

Large Text (above 18pt) WCAG AAA × Fail

Any Text WCAG AAA × Fail

Black Background



This preview shows how the HunterLab color 85.2637, 3.9200, 6.4839 looks on a black background.

Color Contrast Check

Large Text (above 18pt) WCAG AA ✓ Pass

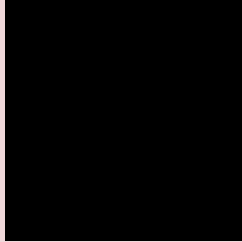
Any Text WCAG AA ✓ Pass

Large Text (above 18pt) WCAG AAA ✓ Pass

Any Text WCAG AAA ✓ Pass

If you want to check with other color combinations, try the [Color Contrast Checker](#).

HunterLab 85.2637, 3.9200, 6.4839 Background



This preview shows how black text looks on a background with the HunterLab color 85.2637, 3.9200, 6.4839.



This preview shows how white text looks on a background with the HunterLab color 85.2637, 3.9200,

6.4839.

Color Blindness Simulation

Color vision deficiency is a very complex topic, and I could not describe the different causes any better than Wikipedia does, so if you want to learn more, you should check out their [article about color blindness](#).

Dichromacy



Original Color

85.2637, 3.9200, 6.4839

Protanopia

85.4998, -2.9168, 5.1968

Deuteranopia

85.0812, 6.3797, 6.3156



Tritanopia

85.2877, 7.9001, 0.1359

Trichromacy



Original Color

85.2637, 3.9200, 6.4839

Protanomaly

85.3342, -0.3904, 5.5309

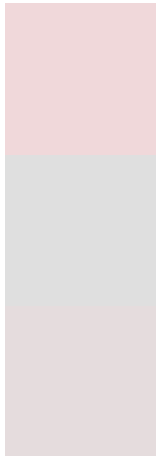
Deuteranomaly

85.2746, 5.4964, 6.5241

Tritanomaly

85.3186, 6.1472, 2.6797

Monochromacy



Original Color

85.2637, 3.9200, 6.4839

Achromatopsia

85.9017, -4.5835, 4.6672

Achromatomaly

85.4780, -1.4091, 5.1977

CSS Examples

Text

The CSS property to change the color of the text to HunterLab 85.2637, 3.9200, 6.4839 is called "color". The color property can be set on classes, ids or directly on the HTML element.

This example shows how text in the color `rgb(240, 216, 218)` looks like.

```
.text, #text, p{  
    color:rgb(240, 216, 218)  
}
```

If you want to add a text shadow in that color use the text-shadow property, you can generate a text shadow directly with our [CSS Text Shadow Generator](#).

Here you see how black text with a 4 pixel rgb(240, 216, 218) colored shadow looks like.

```
.shadow{ text-shadow: 4px 4px 2px rgb(240, 216, 218) }
```

Border

The CSS property to change the border of an element to HunterLab 85.2637, 3.9200, 6.4839 is called "border". The border property can be set on classes, ids or directly on the HTML element.

This example shows the color as border, it can be applied via the CSS property "border" or "border-color".

```
.border, #border, table{ border:4px solid rgb(240, 216, 218) }
```


If only the border color should be changed use the property `border-color`.

```
.border{ border-color:rgb(240, 216, 218) }
```

If you want to add a box shadow in that color use:

Here you see how a box with a 4 pixel `rgb(240, 216, 218)` colored shadow looks like.

```
.boxshadow{ -moz-box-shadow:4px 4px 4px  
4px rgb(240, 216, 218); -webkit-box-  
shadow:4px 4px 4px 4px rgb(240, 216, 218);  
box-shadow:4px 4px 4px 4px rgb(240, 216,  
218) }
```

Background

The CSS property to change the background color of an element to HunterLab 85.2637, 3.9200, 6.4839 is called "background". The background property can be set on classes, ids or directly on the HTML element.

```
.background, #background, body{  
background: rgb(240, 216, 218) }
```

If only the background color should be changed can be used:

```
.background{ background-color: rgb(240,  
216, 218) }
```

This example shows the color as background, it is applied via the CSS property "background".

To optimize and compress your CSS code, you can use our [online CSS compressor and optimizer](#) based on csstidy. If you want to create a linear or radial gradient as background or border, check our [CSS Gradient Generator](#).

Hey! You found this booklet interesting? Support Converting Colors with the new Membership Option!

The pro membership hides all ads, plus gives you double the colors in the color bucket, and more awesome pro features!

[Learn more, Memberships starting at \\$2.50/m!](#)

**Follow me
on Twitter!**

@ConvertingColor