

Converting Colors

HunterLab(85.6408, 2.0532,
4.8960)

Have a look what the booklet for
HunterLab(85.6408, 2.0532, 4.8960)
contains.

HunterLab(85.5860, 2.1585, 4.9012)	3
<i>Conversions</i>	4
<i>Details</i>	6
<i>Harmonies</i>	12
<i>Previews</i>	24
<i>Color Blindness Simulation</i>	28
<i>CSS Examples</i>	31

Color

**HunterLab(85.5860, 2.1585,
4.9012)**

Conversions

Conversions Part 1

Format	Color
Hex	ECDADE
RGB	236, 218, 222
RGB Percent	93%, 85%, 87%
CMY	0.0745, 0.1451, 0.1294
CMYK	0.00, 0.08, 0.06, 0.07
HSL	347°, 32%, 89%
HSV	347°, 8%, 93%
XYZ	72.8483, 73.2496, 79.4063
YIQ	223.8380, 9.4440, 5.0600

Conversions

Conversions Part 2

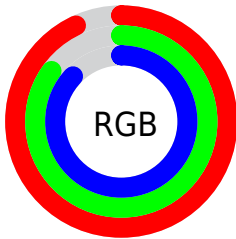
Format	Color
R _Y B	236, 218, 222
Decimal	15522526
CIE Lab	88.57, 6.86, 0.27
CIE LCh	89, 6.861, 2.219
Yxy	73.2528, 0.3230, 0.3248
Android (android.graphics.Color)	4293712606 (0xFFEADADE)
YUV	223.8380, -0.9061, 10.6661
Hunter-Lab	85.5860, 2.1585, 4.9012

Details

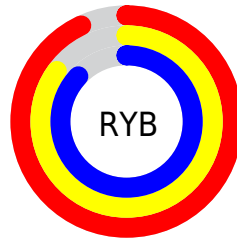
The HunterLab color $85.5860, 2.1585, 4.9012$ is a light color, and the websafe version is hex `CCCCCC`. A complement of this color would be $89.8468, -11.2535, 4.7840$, and the grayscale version is $86.2688, -4.6031, 4.6872$.

A 20% lighter version of the original color is $100.0000, -5.3358, 5.4332$, and $62.1994, 2.7708, 3.5264$ is the 20% darker color. If you saturate the color by 10%, you get $78.0640, 11.6292, 5.0891$, and if you desaturate by 10%, it is $93.4964, -7.0493, 5.0325$.

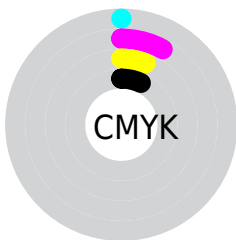
Distribution



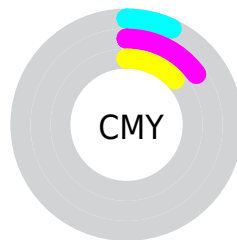
- Red (93%)
- Green (85%)
- Blue (87%)



- Red (93%)
- Yellow (85%)
- Blue (87%)



- Cyan (0%)
- Magenta (8%)
- Yellow (6%)
- Black (7%)



- Cyan (7%)
- Magenta (15%)
- Yellow (13%)

Brightness & Saturation Gradients

These gradients show how the HunterLab color 85.5860, 2.1585, 4.9012 changes by changing the brightness by 10 percent. The first figure shows a shift by +10% for each color and the second figure -10%.

Similar to the brightness gradients but the following saturation gradients show a change of the HunterLab color 85.5860, 2.1585, 4.9012 by changing the saturation by 10% instead.

85.5860, 2.1585,
4.9012

85.5860, 2.1585,
4.9012

217.2304, -2.4897,
12.1573

73.6089, 2.4765,
4.2386

111.2817, 1.3813,
6.3236

62.2477, 2.7470,
3.6075

124.9472, 0.9326,
7.0779

51.5399, 2.9630,
3.0112

139.1304, 0.4461,
7.8601

41.5280, 3.1182,
2.4519

153.8130, -0.0760,
8.6691

32.2643, 3.2043,
1.9321

168.9786, -0.6320,
9.5040

23.8150, 3.2102,
1.4552

184.6123, -1.2206,

16.2677, 3.1190,

10.3642

1.0253

200.7004, -1.8402,
11.2488

■ 9.7470, 2.9037,
0.6482

0.0000, INF, NaN

■ 85.5860, 2.1585,
4.9012

■ 85.5860, 2.1585,
4.9012

■ 78.0640, 11.6292,
5.0891

■ 93.4964, -7.0493,
5.0325

■ 70.9931, 21.3555,
5.6564

■ 98.2716, -11.4015,
3.2754

■ 64.4605, 31.2613,
6.6755

■ 58.5710, 41.1660,
8.2141

■ 53.4467, 50.7231,
10.3145

■ 49.2182, 59.3746,
12.9566

■ 46.0005, 66.3875,
16.0148

■ 43.8538, 71.0544,
19.2369

■ 42.7174, 73.1089,
22.2724

Harmonies

Analogous

The Analogous color harmony consists of three colors that are next to each other on the color wheel.



85.5879, 1.3749, 1.6661



85.5860, 2.1585, 4.9012



85.5879, 1.1114, 7.9542

Triad

The Triadic color harmony groups three colors that are evenly spaced from another and form a triangle on the color wheel.



85.5879, 2.1562, 4.9026



85.5879, -8.0782, 9.8256



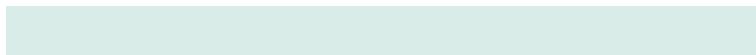
85.5879, -7.6403, -1.1122

Complementary

The Complementary color scheme is a pair of colors which are on the opposite of each other on the color wheel.



85.5860, 2.1585, 4.9012



89.8468, -11.2535, 4.7840

Split Complementary

Split-complementary colors differ from the complementary color scheme. The scheme consists of three colors, the original color and two neighbors of the complement color.



85.5879, -10.1096, 1.2269



85.5860, 2.1585, 4.9012



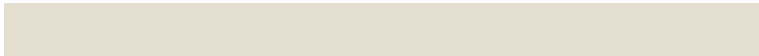
85.5879, -10.3595, 7.5471

Square

The Square scheme is like the rectangle color scheme, but the four colors are evenly spaced on the color wheel.



85.5879, 2.1562, 4.9026



85.5879, -4.8279, 10.7255



85.5879, -11.0973, 4.4142



85.5879, -4.3145, -1.8873

Rectangle

The Rectangle color scheme consists of four colors that form a rectangle on the color wheel.



85.5860, 2.1585, 4.9012



85.5879, -0.4707, 9.4960



85.5879, -11.0973, 4.4142



85.5879, -8.5962, -0.4783

Sweetspot

The Sweet Spot groups the original color and five complimentary colors.



85.5879, 2.1562, 4.9026



98.2528, -3.3266, 5.3942



85.6298, 3.2123, -2.1263



45.4961, -1.5852, 2.4964

0.0000, NaN, NaN



46.2646, -2.4686, 2.5136

Same Dimension

The Same Dimension uses a secret algorithm to generate beautiful new colors.



85.5879, 2.1562, 4.9026



92.2629, 3.7975, 5.3593



86.9289, -1.0287, 8.3042



38.8701, 1.7902, 2.2680



31.5981, 54.6018, 16.6259



8.9339, 15.5938, 3.4929

Inverse Universe

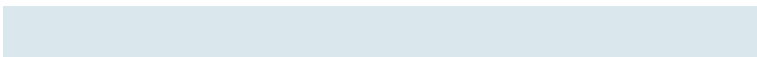
The Inverse Universe completely reimagines the original color for something new.



85.5879, 2.1562, 4.9026



92.2629, 3.7975, 5.3593



88.4464, -8.0840, 1.1613



38.8701, 1.7902, 2.2680



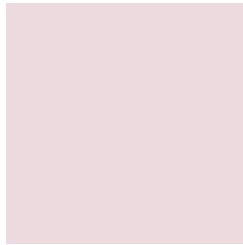
31.5981, 54.6018, 16.6259



8.9339, 15.5938, 3.4929

Previews

White Background



This preview shows how the HunterLab color 85.5860, 2.1585, 4.9012 looks on a white background.

Color Contrast Check

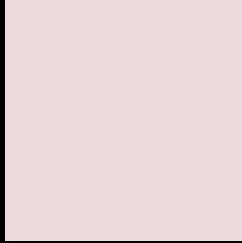
Large Text (above 18pt) WCAG AA × Fail

Any Text WCAG AA × Fail

Large Text (above 18pt) WCAG AAA × Fail

Any Text WCAG AAA × Fail

Black Background



This preview shows how the HunterLab color 85.5860, 2.1585, 4.9012 looks on a black background.

Color Contrast Check

Large Text (above 18pt) WCAG AA ✓ Pass

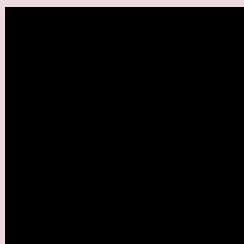
Any Text WCAG AA ✓ Pass

Large Text (above 18pt) WCAG AAA ✓ Pass

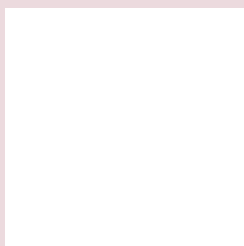
Any Text WCAG AAA ✓ Pass

If you want to check with other color combinations, try the [Color Contrast Checker](#).

HunterLab 85.5860, 2.1585, 4.9012 Background



This preview shows how black text looks on a background with the HunterLab color 85.5860, 2.1585, 4.9012.



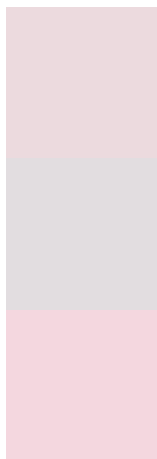
This preview shows how white text looks on a background with the HunterLab color 85.5860, 2.1585,

4.9012.

Color Blindness Simulation

Color vision deficiency is a very complex topic, and I could not describe the different causes any better than Wikipedia does, so if you want to learn more, you should check out their [article about color blindness](#).

Dichromacy



Original Color

85.5860, 2.1585, 4.9012

Protanopia

85.5941, -2.4022, 3.8516

Deuteranopia

85.5346, 6.6797, 4.4314



Tritanopia

85.5407, 5.8145, -0.6217

Trichromacy



Original Color

85.5860, 2.1585, 4.9012

Protanomaly

85.6371, -0.7369, 4.4226

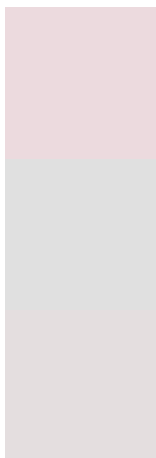
Deuteranomaly

85.5221, 5.1025, 4.3889

Tritanomaly

85.6080, 4.2335, 1.4857

Monochromacy



Original Color

85.5860, 2.1585, 4.9012

Achromatopsia

86.3368, -4.6067, 4.6908

Achromatomaly

86.0606, -2.4403, 4.8916

CSS Examples

Text

The CSS property to change the color of the text to HunterLab 85.5860, 2.1585, 4.9012 is called "color". The color property can be set on classes, ids or directly on the HTML element.

This example shows how text in the color `rgb(236, 218, 222)` looks like.

```
.text, #text, p{  
    color:rgb(236, 218, 222)  
}
```

If you want to add a text shadow in that color use the text-shadow property, you can generate a text shadow directly with our [CSS Text Shadow Generator](#).

Here you see how black text with a 4 pixel rgb(236, 218, 222) colored shadow looks like.

```
.shadow{ text-shadow: 4px 4px 2px rgb(236, 218, 222) }
```

Border

The CSS property to change the border of an element to HunterLab 85.5860, 2.1585, 4.9012 is called "border". The border property can be set on classes, ids or directly on the HTML element.

This example shows the color as border, it can be applied via the CSS property "border" or "border-color".

```
.border, #border, table{ border:4px solid rgb(236, 218, 222) }
```


If only the border color should be changed use the property `border-color`.

```
.border{ border-color:rgb(236, 218, 222) }
```

If you want to add a box shadow in that color use:

Here you see how a box with a 4 pixel `rgb(236, 218, 222)` colored shadow looks like.

```
.boxshadow{ -moz-box-shadow:4px 4px 4px 4px rgb(236, 218, 222); -webkit-box-shadow:4px 4px 4px 4px rgb(236, 218, 222); box-shadow:4px 4px 4px 4px rgb(236, 218, 222) }
```

Background

The CSS property to change the background color of an element to HunterLab 85.5860, 2.1585, 4.9012 is called "background". The background property can be set on classes, ids or directly on the HTML element.

```
.background, #background, body{  
background: rgb(236, 218, 222) }
```

If only the background color should be changed can be used:

```
.background{ background-color: rgb(236,  
218, 222) }
```

This example shows the color as background, it is applied via the CSS property "background".

To optimize and compress your CSS code, you can use our [online CSS compressor and optimizer](#) based on csstidy. If you want to create a linear or radial gradient as background or border, check our [CSS Gradient Generator](#).

Hey! You found this booklet interesting? Support Converting Colors with the new Membership Option!

The pro membership hides all ads, plus gives you double the colors in the color bucket, and more awesome pro features!

[Learn more, Memberships starting at \\$2.50/m!](#)

**Follow me
on Twitter!**

@ConvertingColor