

# Converting Colors

HunterLab(85.9089, 3.3934,  
7.3412)

Have a look what the booklet for  
HunterLab(85.9089, 3.3934, 7.3412)  
contains.

<b>HunterLab(85.9683, 3.2090, 7.2837)</b> .....	3
<b><i>Conversions</i></b> .....	4
<b><i>Details</i></b> .....	6
<b><i>Harmonies</i></b> .....	12
<b><i>Previews</i></b> .....	24
<b><i>Color Blindness Simulation</i></b> .....	28
<b><i>CSS Examples</i></b> .....	31

# Color

**HunterLab(85.9683, 3.2090,  
7.2837)**

# Conversions

## Conversions Part 1

<b>Format</b>	<b>Color</b>
Hex	F1DADA
RGB	241, 218, 218
RGB Percent	95%, 85%, 85%
CMY	0.0549, 0.1451, 0.1451
CMYK	0.00, 0.10, 0.10, 0.05
HSL	0°, 45%, 90%
HSV	0°, 10%, 95%
XYZ	74.0019, 73.9055, 76.6945
YIQ	224.8770, 13.7080, 4.8760

# Conversions

## Conversions Part 2

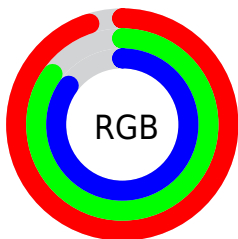
Format	Color
R <sub>Y</sub> B	241, 218, 218
Decimal	15850202
CIE Lab	88.88, 7.92, 2.88
CIE LCh	89, 8.423, 19.959
Yxy	73.9087, 0.3295, 0.3291
Android (android.graphics.Color)	4294040282 (0xFFFF1DADA)
YUV	224.8770, -3.3904, 14.1399
Hunter-Lab	85.9683, 3.2090, 7.2837

# Details

The HunterLab color  $85.9683, 3.2090, 7.2837$  is a light color, and the websafe version is hex `CCCCCC`. A complement of this color would be  $91.7416, -12.1983, 2.5346$ , and the grayscale version is  $86.7303, -4.6277, 4.7122$ .

A 20% lighter version of the original color is  $100.0000, -5.3358, 5.4332$ , and  $62.5724, 3.7950, 5.7906$  is the 20% darker color. If you saturate the color by 10%, you get  $78.1889, 12.1860, 9.7346$ , and if you desaturate by 10%, it is  $94.1714, -5.3890, 4.9943$ .

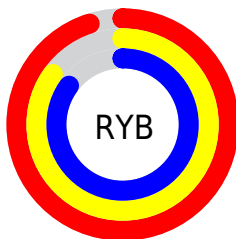
# Distribution



Red (95%)

Green (85%)

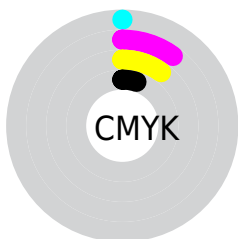
Blue (85%)



Red (95%)

Yellow (85%)

Blue (85%)

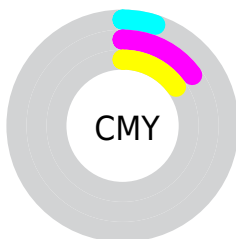


Cyan (0%)

Magenta (10%)

Yellow (10%)

Black (5%)



Cyan (5%)

Magenta (15%)

Yellow (15%)

# Brightness & Saturation Gradients

These gradients show how the HunterLab color 85.9683, 3.2090, 7.2837 changes by changing the brightness by 10 percent. The first figure shows a shift by +10% for each color and the second figure -10%.

Similar to the brightness gradients but the following saturation gradients show a change of the HunterLab color 85.9683, 3.2090, 7.2837 by changing the saturation by 10% instead.



85.9683, 3.2090,  
7.2837

85.9683, 3.2090,  
7.2837

217.7518, -1.0854,  
15.4308

73.9725, 3.4799,  
6.5005

111.6989, 2.5198,  
8.9305

62.5916, 3.7012,  
5.7422

125.3808, 2.1127,  
9.7901

51.8628, 3.8653,  
5.0105

139.5798, 1.6665,  
10.6736

41.8285, 3.9655,  
4.3060

154.2777, 1.1833,  
11.5804

32.5407, 3.9930,  
3.6287

169.4581, 0.6650,  
12.5100

24.0648, 3.9356,  
2.9782

185.1061, 0.1132,

16.4879, 3.7755,

13.4619

2.3524

201.2082, -0.4707,  
14.4356

■ 9.9328, 3.4843,  
1.7640

0.0000, INF, NaN

■ 85.9683, 3.2090,  
7.2837

■ 85.9683, 3.2090,  
7.2837

■ 78.1889, 12.1860,  
9.7346

■ 94.1714, -5.3890,  
4.9943

■ 70.9053, 21.5569,  
12.3509

■ 98.7122, -9.8450,  
3.8289

■ 64.2169, 31.2629,  
15.1221

■ 58.2433, 41.1279,  
17.9977

■ 53.1230, 50.7831,  
20.8639

■ 48.9993, 59.6138,  
23.5251

■ 45.9892, 66.8125,  
25.7188

■ 44.1334, 71.6320,  
27.1980

■ 43.2761, 73.9696,  
27.9182

# Harmonies

## Analogous

The Analogous color harmony consists of three colors that are next to each other on the color wheel.



85.9702, 3.5846, 3.3163



85.9683, 3.2090, 7.2837



85.9702, 0.7165, 10.4080

# Triad

The Triadic color harmony groups three colors that are evenly spaced from another and form a triangle on the color wheel.



85.9702, 3.2066, 7.2851



85.9702, -10.7450, 9.5211



85.9702, -6.0087, -3.3130

# Complementary

The Complementary color scheme is a pair of colors which are on the opposite of each other on the color wheel.



85.9683, 3.2090, 7.2837



91.7416, -12.1983, 2.5346

# Split Complementary

Split-complementary colors differ from the complementary color scheme. The scheme consists of three colors, the original color and two neighbors of the complement color.



85.9702, -9.7743, -1.4723



85.9683, 3.2090, 7.2837



85.9702, -12.4735, 6.0209

# Square

The Square scheme is like the rectangle color scheme, but the four colors are evenly spaced on the color wheel.



85.9702, 3.2066, 7.2851



85.9702, -7.3571, 11.6550



85.9702, -12.1217, 1.9899



85.9702, -1.7910, -2.9342



# Rectangle

The Rectangle color scheme consists of four colors that form a rectangle on the color wheel.



85.9683, 3.2090, 7.2837



85.9702, -1.7799, 11.6515



85.9702, -12.1217, 1.9899



85.9702, -7.3680, -2.9300

# Sweetspot

The Sweet Spot groups the original color and five complimentary colors.



85.9702, 3.2066, 7.2851



97.3312, -2.6138, 6.1534



86.7153, 7.2129, -3.3402



44.7027, -0.8700, 2.9370

0.0000, NaN, NaN



46.2646, -2.4686, 2.5136

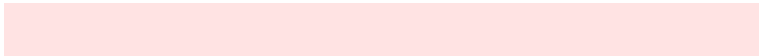


# Same Dimension

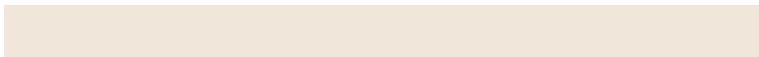
The Same Dimension uses a secret algorithm to generate beautiful new colors.



85.9702, 3.2066, 7.2851



90.3974, 4.8189, 8.1456



89.4871, -2.8324, 11.1443



39.6980, 1.4514, 3.3542



31.8461, 54.5315, 20.5781



9.1862, 15.7254, 5.9358



# Inverse Universe

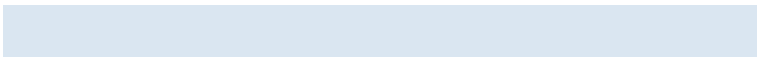
The Inverse Universe completely reimagines the original color for something new.



91.7416, -12.1983, 2.5346



97.4985, -14.1419, 2.2984



88.0755, -6.2878, -1.8596



42.3420, -5.6058, 1.1779



61.2740, -32.4771, -6.4785

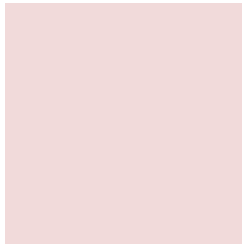


17.6736, -9.3678, -1.8680



# Previews

## White Background



This preview shows how the HunterLab color 85.9683, 3.2090, 7.2837 looks on a white background.

## Color Contrast Check

Large Text (above 18pt) WCAG AA × Fail

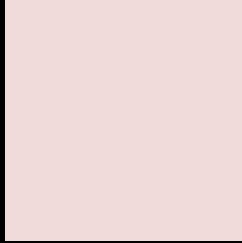
Any Text WCAG AA × Fail

Large Text (above 18pt) WCAG AAA × Fail

Any Text WCAG AAA × Fail



# Black Background



This preview shows how the HunterLab color 85.9683, 3.2090, 7.2837 looks on a black background.

## Color Contrast Check

Large Text (above 18pt) WCAG AA ✓ Pass

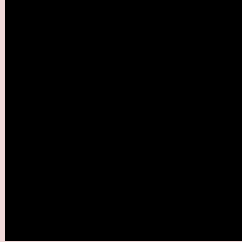
Any Text WCAG AA ✓ Pass

Large Text (above 18pt) WCAG AAA ✓ Pass

Any Text WCAG AAA ✓ Pass

If you want to check with other color combinations, try the [Color Contrast Checker](#).

## HunterLab 85.9683, 3.2090, 7.2837 Background



This preview shows how black text looks on a background with the HunterLab color 85.9683, 3.2090, 7.2837.



This preview shows how white text looks on a background with the HunterLab color 85.9683, 3.2090,

7.2837.

# Color Blindness Simulation

Color vision deficiency is a very complex topic, and I could not describe the different causes any better than Wikipedia does, so if you want to learn more, you should check out their [article about color blindness](#).

## Dichromacy



### Original Color

85.9683, 3.2090, 7.2837

### Protanopia

85.9673, -2.9491, 6.2227

### Deuteranopia

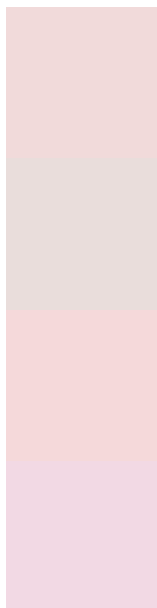
85.9929, 6.3739, 7.3674



## Tritanopia

86.0521, 7.5263, 0.0410

# Trichromacy



## Original Color

85.9683, 3.2090, 7.2837

## Protanomaly

86.1110, -0.9332, 6.9011

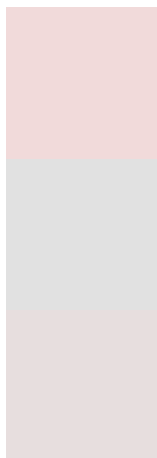
## Deuteranomaly

86.0814, 5.1358, 7.4472

## Tritanomaly

86.0839, 5.7708, 2.5924

# Monochromacy



## Original Color

85.9683, 3.2090, 7.2837

## Achromatopsia

86.7722, -4.6299, 4.7145

## Achromatomaly

86.3165, -1.6201, 5.6904

# CSS Examples

## Text

The CSS property to change the color of the text to HunterLab 85.9683, 3.2090, 7.2837 is called "color". The color property can be set on classes, ids or directly on the HTML element.

This example shows how text in the color `rgb(241, 218, 218)` looks like.

```
.text, #text, p{  
    color:rgb(241, 218, 218)  
}
```

If you want to add a text shadow in that color use the text-shadow property, you can generate a text shadow directly with our [CSS Text Shadow Generator](#).

Here you see how black text with a 4 pixel rgb(241, 218, 218) colored shadow looks like.

```
.shadow{ text-shadow: 4px 4px 2px rgb(241, 218, 218) }
```

## Border

The CSS property to change the border of an element to HunterLab 85.9683, 3.2090, 7.2837 is called "border".

The border property can be set on classes, ids or directly on the HTML element.

This example shows the color as border, it can be applied via the CSS property "border" or "border-color".

```
.border, #border, table{ border:4px solid rgb(241, 218, 218) }
```



If only the border color should be changed use the property `border-color`.

```
.border{ border-color:rgb(241, 218, 218) }
```

If you want to add a box shadow in that color use:

Here you see how a box with a 4 pixel `rgb(241, 218, 218)` colored shadow looks like.

```
.boxshadow{ -moz-box-shadow:4px 4px 4px  
4px rgb(241, 218, 218); -webkit-box-  
shadow:4px 4px 4px 4px rgb(241, 218, 218);  
box-shadow:4px 4px 4px 4px rgb(241, 218,  
218) }
```

# Background

The CSS property to change the background color of an element to HunterLab 85.9683, 3.2090, 7.2837 is called "background". The background property can be set on classes, ids or directly on the HTML element.

```
.background, #background, body{  
background: rgb(241, 218, 218) }
```

If only the background color should be changed can be used:

```
.background{ background-color: rgb(241,  
218, 218) }
```

This example shows the color as background, it is applied via the CSS property "background".

To optimize and compress your CSS code, you can use our [online CSS compressor and optimizer](#) based on csstidy. If you want to create a linear or radial gradient as background or border, check our [CSS Gradient Generator](#).

Hey! You found this booklet interesting? Support Converting Colors with the new Membership Option!

The pro membership hides all ads, plus gives you double the colors in the color bucket, and more awesome pro features!

**[Learn more, Memberships starting at \\$2.50/m!](#)**

**Follow me  
on Twitter!**

@ConvertingColor