

# Converting Colors

HunterLab(86.0709, 3.5563,  
7.4075)

Have a look what the booklet for  
HunterLab(86.0709, 3.5563, 7.4075)  
contains.

<b>HunterLab(86.0709, 3.5563, 7.4075)</b> .....	3
<i><b>Conversions</b></i> .....	4
<i><b>Details</b></i> .....	6
<i><b>Harmonies</b></i> .....	12
<i><b>Previews</b></i> .....	24
<i><b>Color Blindness Simulation</b></i> .....	28
<i><b>CSS Examples</b></i> .....	31

# Color

**HunterLab(86.0709, 3.5563,  
7.4075)**

# Conversions

## Conversions Part 1

<b>Format</b>	<b>Color</b>
Hex	F2DADA
RGB	242, 218, 218
RGB Percent	95%, 85%, 85%
CMY	0.0510, 0.1451, 0.1451
CMYK	0.00, 0.10, 0.10, 0.05
HSL	0°, 48%, 90%
HSV	0°, 10%, 95%
XYZ	74.3442, 74.0820, 76.7106
YIQ	225.1760, 14.3040, 5.0880

# Conversions

## Conversions Part 2

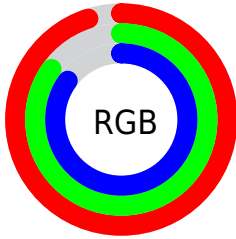
Format	Color
R <sub>Y</sub> B	242, 218, 218
Decimal	15915738
CIE Lab	88.96, 8.27, 3.01
CIE LCh	89, 8.796, 19.988
Yxy	74.0853, 0.3302, 0.3291
Android (android.graphics.Color)	4294105818 (0xFF2DADA)
YUV	225.1760, -3.5378, 14.7546
Hunter-Lab	86.0709, 3.5563, 7.4075

# Details

The HunterLab color  $86.0709, 3.5563, 7.4075$  is a light color, and the websafe version is hex  $\text{FFCCCC}$ . A complement of this color would be  $92.0972, -12.5274, 2.4499$ , and the grayscale version is  $86.8611, -4.6347, 4.7193$ .

A 20% lighter version of the original color is  $100.0000, -5.3358, 5.4332$ , and  $62.6720, 4.1300, 5.9101$  is the 20% darker color. If you saturate the color by 10%, you get  $78.2704, 12.5927, 9.8767$ , and if you desaturate by 10%, it is  $94.2999, -5.0981, 5.1012$ .

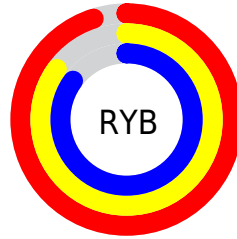
# Distribution



Red (95%)

Green (85%)

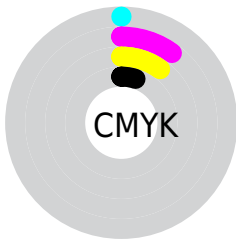
Blue (85%)



Red (95%)

Yellow (85%)

Blue (85%)

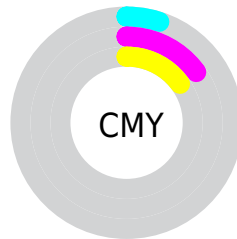


Cyan (0%)

Magenta (10%)

Yellow (10%)

Black (5%)



Cyan (5%)

Magenta (15%)


Yellow (15%)


# Brightness & Saturation Gradients

These gradients show how the HunterLab color 86.0709, 3.5563, 7.4075 changes by changing the brightness by 10 percent. The first figure shows a shift by +10% for each color and the second figure -10%.


Similar to the brightness gradients but the following saturation gradients show a change of the HunterLab color 86.0709, 3.5563, 7.4075 by changing the saturation by 10% instead.




 86.0709, 3.5563,  
7.4075

 86.0709, 3.5563,  
7.4075


217.8916, -0.6217,  
15.6013

 74.0701, 3.8118,  
6.6180

111.8109, 2.8961,  
9.0660

 62.6839, 4.0169,  
5.8530


125.4972, 2.5027,  
9.9312

 51.9495, 4.1640,  
5.1142


139.7004, 2.0697,  
10.8200

 41.9092, 4.2461,  
4.4021

154.4024, 1.5993,  
11.7319

 32.6149, 4.2544,  
3.7165

169.5868, 1.0935,  
12.6665

 24.1320, 4.1763,  
3.0568

185.2386, 0.5537,

 16.5471, 3.9937,

13.6232

2.4207

201.3444, -0.0184,  
14.6016

■ 9.9828, 3.6777,  
1.8198

0.0000, INF, NaN

■ 86.0709, 3.5563,  
7.4075

■ 86.0709, 3.5563,  
7.4075

■ 78.2704, 12.5927,  
9.8767

■ 94.2999, -5.0981,  
5.1012

■ 70.9716, 22.0243,  
12.5122

■ 98.8015, -9.5302,  
3.9409

■ 64.2752, 31.7886,  
15.3023

■ 58.3024, 41.7026,  
18.1943

■ 53.1929, 51.3865,  
21.0710

■ 49.0904, 60.2130,  
23.7322

■ 46.1108, 67.3661,  
25.9129

■ 44.2906, 72.1051,  
27.3677

■ 43.4547, 74.3874,  
28.0710

# Harmonies

## Analogous

The Analogous color harmony consists of three colors that are next to each other on the color wheel.



86.0728, 3.9517, 3.2647



86.0709, 3.5563, 7.4075



86.0728, 0.9475, 10.6625

# Triad

The Triadic color harmony groups three colors that are evenly spaced from another and form a triangle on the color wheel.



86.0728, 3.5539, 7.4089



86.0728, -11.0239, 9.7332



86.0728, -6.0729, -3.6814

# Complementary

The Complementary color scheme is a pair of colors which are on the opposite of each other on the color wheel.



86.0709, 3.5563, 7.4075



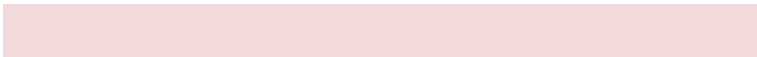
92.0972, -12.5274, 2.4499

# Split Complementary

Split-complementary colors differ from the complementary color scheme. The scheme consists of three colors, the original color and two neighbors of the complement color.



86.0728, -10.0050, -1.7541



86.0709, 3.5563, 7.4075



86.0728, -12.8250, 6.0818

# Square

The Square scheme is like the rectangle color scheme, but the four colors are evenly spaced on the color wheel.



86.0728, 3.5539, 7.4089



86.0728, -7.4893, 11.9567



86.0728, -12.4559, 1.8694



86.0728, -1.6665, -3.2819



# Rectangle

The Rectangle color scheme consists of four colors that form a rectangle on the color wheel.



86.0709, 3.5563, 7.4075



86.0728, -1.6632, 11.9556



86.0728, -12.4559, 1.8694



86.0728, -7.4925, -3.2806

# Sweetspot

The Sweet Spot groups the original color and five complimentary colors.



86.0728, 3.5539, 7.4089



97.3312, -2.6138, 6.1534



86.8515, 7.7368, -3.6940



44.7027, -0.8700, 2.9370

0.0000, NaN, NaN



46.2646, -2.4686, 2.5136



# Same Dimension

The Same Dimension uses a secret algorithm to generate beautiful new colors.



86.0728, 3.5539, 7.4089



89.5506, 5.7666, 8.4022



89.7406, -2.7532, 11.4260



39.6980, 1.4514, 3.3541



31.8461, 54.5317, 20.5781



9.1861, 15.7255, 5.9358



# Inverse Universe

The Inverse Universe completely reimagines the original color for something new.



92.0972, -12.5274, 2.4499



97.2871, -14.8968, 2.0300



88.2671, -6.3600, -2.1488



42.3421, -5.6058, 1.1779



61.2744, -32.4776, -6.4779

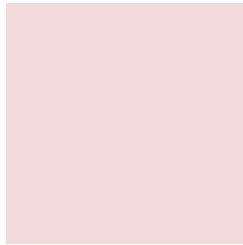


17.6737, -9.3680, -1.8678



# Previews

## White Background



This preview shows how the HunterLab color 86.0709, 3.5563, 7.4075 looks on a white background.

## Color Contrast Check

Large Text (above 18pt) WCAG AA × Fail

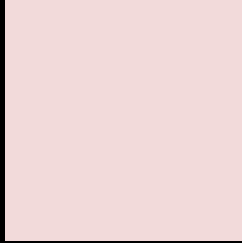
Any Text WCAG AA × Fail

Large Text (above 18pt) WCAG AAA × Fail

Any Text WCAG AAA × Fail



# Black Background



This preview shows how the HunterLab color 86.0709, 3.5563, 7.4075 looks on a black background.

## Color Contrast Check

Large Text (above 18pt) WCAG AA ✓ Pass

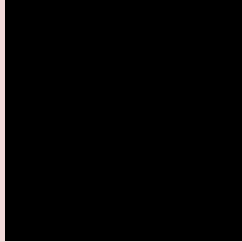
Any Text WCAG AA ✓ Pass

Large Text (above 18pt) WCAG AAA ✓ Pass

Any Text WCAG AAA ✓ Pass

If you want to check with other color combinations, try the [Color Contrast Checker](#).

## HunterLab 86.0709, 3.5563, 7.4075 Background



This preview shows how black text looks on a background with the HunterLab color 86.0709, 3.5563, 7.4075.



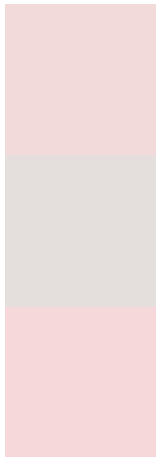
This preview shows how white text looks on a background with the HunterLab color 86.0709, 3.5563,

7.4075.

# Color Blindness Simulation

Color vision deficiency is a very complex topic, and I could not describe the different causes any better than Wikipedia does, so if you want to learn more, you should check out their [article about color blindness](#).

## Dichromacy



### Original Color

86.0709, 3.5563, 7.4075

### Protanopia

85.9983, -2.7803, 5.7813

### Deuteranopia

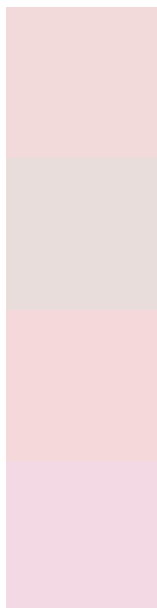
85.9929, 6.3739, 7.3674



## Tritanopia

86.1557, 7.8719, 0.1748

# Trichromacy



## Original Color

86.0709, 3.5563, 7.4075

## Protanomaly

86.1417, -0.7665, 6.4628

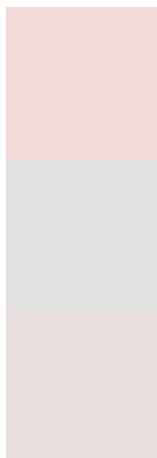
## Deuteranomaly

86.0814, 5.1358, 7.4472

## Tritanomaly

86.1869, 6.1165, 2.7223

# Monochromacy



## Original Color

86.0709, 3.5563, 7.4075

## Achromatopsia

86.7722, -4.6299, 4.7145

## Achromatomaly

86.3165, -1.6201, 5.6904

# CSS Examples

## Text

The CSS property to change the color of the text to HunterLab 86.0709, 3.5563, 7.4075 is called "color". The color property can be set on classes, ids or directly on the HTML element.

This example shows how text in the color `rgb(242, 218, 218)` looks like.

```
.text, #text, p{  
    color:rgb(242, 218, 218)  
}
```

If you want to add a text shadow in that color use the text-shadow property, you can generate a text shadow directly with our [CSS Text Shadow Generator](#).

Here you see how black text with a 4 pixel rgb(242, 218, 218) colored shadow looks like.

```
.shadow{ text-shadow: 4px 4px 2px rgb(242, 218, 218) }
```

## Border

The CSS property to change the border of an element to HunterLab 86.0709, 3.5563, 7.4075 is called "border". The border property can be set on classes, ids or directly on the HTML element.

This example shows the color as border, it can be applied via the CSS property "border" or "border-color".

```
.border, #border, table{ border:4px solid rgb(242, 218, 218) }
```



If only the border color should be changed use the property border-color.

```
.border{ border-color:rgb(242, 218, 218) }
```

If you want to add a box shadow in that color use:

Here you see how a box with a 4 pixel rgb(242, 218, 218) colored shadow looks like.

```
.boxshadow{ -moz-box-shadow:4px 4px 4px  
4px rgb(242, 218, 218); -webkit-box-  
shadow:4px 4px 4px 4px rgb(242, 218, 218);  
box-shadow:4px 4px 4px 4px rgb(242, 218,  
218) }
```

# Background

The CSS property to change the background color of an element to HunterLab 86.0709, 3.5563, 7.4075 is called "background". The background property can be set on classes, ids or directly on the HTML element.

```
.background, #background, body{  
background: rgb(242, 218, 218) }
```

If only the background color should be changed can be used:

```
.background{ background-color: rgb(242,  
218, 218) }
```

This example shows the color as background, it is applied via the CSS property "background".

To optimize and compress your CSS code, you can use our [online CSS compressor and optimizer](#) based on csstidy. If you want to create a linear or radial gradient as background or border, check our [CSS Gradient Generator](#).

Hey! You found this booklet interesting? Support Converting Colors with the new Membership Option!

The pro membership hides all ads, plus gives you double the colors in the color bucket, and more awesome pro features!

**[Learn more, Memberships starting at \\$2.50/m!](#)**

**Follow me  
on Twitter!**

@ConvertingColor