

Converting Colors

HunterLab(86.2224, 2.4283,
7.0404)

Have a look what the booklet for
HunterLab(86.2224, 2.4283, 7.0404)
contains.

HunterLab(86.1991, 2.4995, 7.0626)	3
<i>Conversions</i>	4
<i>Details</i>	6
<i>Harmonies</i>	12
<i>Previews</i>	24
<i>Color Blindness Simulation</i>	28
<i>CSS Examples</i>	31

Color

**HunterLab(86.1991, 2.4995,
7.0626)**

Conversions

Conversions Part 1

Format	Color
Hex	F0DBDB
RGB	240, 219, 219
RGB Percent	94%, 86%, 86%
CMY	0.0588, 0.1412, 0.1412
CMYK	0.00, 0.09, 0.09, 0.06
HSL	0°, 41%, 90%
HSV	0°, 9%, 94%
XYZ	74.0530, 74.3028, 77.4567
YIQ	225.2790, 12.5160, 4.4520

Conversions

Conversions Part 2

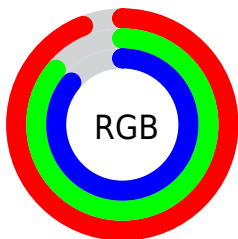
Format	Color
R _Y B	240, 219, 219
Decimal	15784923
CIE Lab	89.07, 7.21, 2.61
CIE LCh	89, 7.672, 19.897
Yxy	74.3061, 0.3279, 0.3291
Android (android.graphics.Color)	4293975003 (0xFFFF0DBDB)
YUV	225.2790, -3.0955, 12.9103
Hunter-Lab	86.1991, 2.4995, 7.0626

Details

The HunterLab color $86.1991, 2.4995, 7.0626$ is a light color, and the websafe version is hex `CCCCCC`. A complement of this color would be $91.4714, -11.5681, 2.7263$, and the grayscale version is $86.9047, -4.6370, 4.7217$.

A 20% lighter version of the original color is $100.0000, -5.3358, 5.4332$, and $62.7866, 3.1126, 5.5773$ is the 20% darker color. If you saturate the color by 10%, you get $78.4223, 11.4008, 9.4885$, and if you desaturate by 10%, it is $94.3920, -6.0268, 4.7963$.

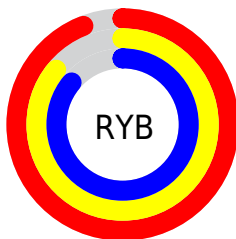
Distribution



Red (94%)

Green (86%)

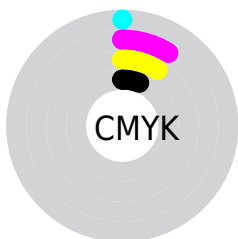
Blue (86%)



Red (94%)

Yellow (86%)

Blue (86%)

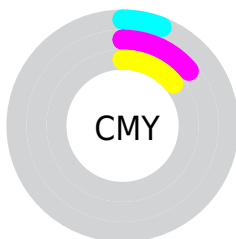


Cyan (0%)

Magenta (9%)

Yellow (9%)

Black (6%)



Cyan (6%)

Magenta (14%)

Yellow (14%)

Brightness & Saturation Gradients

These gradients show how the HunterLab color 86.1991, 2.4995, 7.0626 changes by changing the brightness by 10 percent. The first figure shows a shift by +10% for each color and the second figure -10%.

Similar to the brightness gradients but the following saturation gradients show a change of the HunterLab color 86.1991, 2.4995, 7.0626 by changing the saturation by 10% instead.

86.1991, 2.4995,
7.0626

86.1991, 2.4995,
7.0626

218.0663, -2.0418,
15.1234

74.1921, 2.8034,
6.2912

111.9507, 1.7486,
8.6875

62.7992, 3.0593,
5.5453

125.6425, 1.3124,
9.5370

52.0579, 3.2600,
4.8269

139.8511, 0.8382,
10.4106

42.0101, 3.3991,
4.1367

154.5582, 0.3279,
11.3080

32.7077, 3.4683,
3.4750

169.7474, -0.2168,
12.2284

24.2159, 3.4562,
2.8418

185.4041, -0.7941,

16.6211, 3.3459,

13.1715

2.2358

201.5145, -1.4029,
14.1366

■ 10.0454, 3.1104,
1.6585

0.0000, INF, NaN

■ 86.1991, 2.4995,
7.0626

■ 86.1991, 2.4995,
7.0626

■ 78.4223, 11.4008,
9.4885

■ 94.3920, -6.0268,
4.7963

■ 71.1318, 20.6950,
12.0788

■ 98.6233, -10.1585,
3.7174

■ 64.4250, 30.3307,
14.8253

■ 58.4188, 40.1447,
17.6815

■ 53.2500, 49.7883,
20.5404

■ 49.0615, 58.6701,
23.2140

■ 45.9734, 65.9960,
25.4447

■ 44.0346, 71.0037,
26.9808

■ 43.1257, 73.4749,
27.7417

Harmonies

Analogous

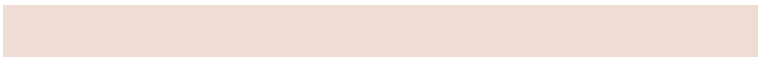
The Analogous color harmony consists of three colors that are next to each other on the color wheel.



86.2010, 2.8363, 3.4425



86.1991, 2.4995, 7.0626



86.2010, 0.2364, 9.9272

Triad

The Triadic color harmony groups three colors that are evenly spaced from another and form a triangle on the color wheel.



86.2010, 2.4971, 7.0640



86.2010, -10.2161, 9.1238



86.2010, -5.9041, -2.5633

Complementary

The Complementary color scheme is a pair of colors which are on the opposite of each other on the color wheel.



86.1991, 2.4995, 7.0626



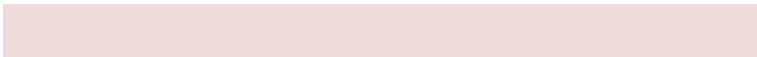
91.4714, -11.5681, 2.7263

Split Complementary

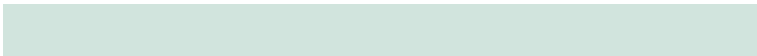
Split-complementary colors differ from the complementary color scheme. The scheme consists of three colors, the original color and two neighbors of the complement color.



86.2010, -9.3401, -0.8933



86.1991, 2.4995, 7.0626



86.2010, -11.8004, 5.9233

Square

The Square scheme is like the rectangle color scheme, but the four colors are evenly spaced on the color wheel.



86.2010, 2.4971, 7.0640



86.2010, -7.1192, 11.0796



86.2010, -11.4826, 2.2509



86.2010, -2.0598, -2.2248

Rectangle

The Rectangle color scheme consists of four colors that form a rectangle on the color wheel.



86.1991, 2.4995, 7.0626



86.2010, -2.0344, 11.0715



86.2010, -11.4826, 2.2509



86.2010, -7.1440, -2.2154

Sweetspot

The Sweet Spot groups the original color and five complimentary colors.



86.2010, 2.4971, 7.0640



97.3313, -2.6139, 6.1535



86.8796, 6.1539, -2.6170



44.7027, -0.8700, 2.9371

0.0000, NaN, NaN



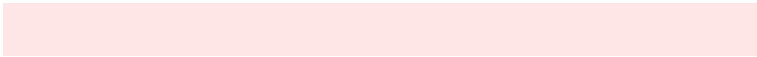
46.2646, -2.4686, 2.5136

Same Dimension

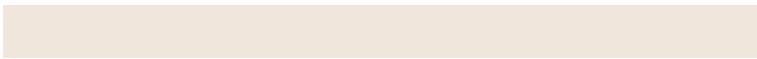
The Same Dimension uses a secret algorithm to generate beautiful new colors.



86.2010, 2.4971, 7.0640



91.2489, 3.8752, 7.8909



89.4184, -3.0114, 10.6088



39.6981, 1.4513, 3.3542



31.8462, 54.5311, 20.5782



9.1863, 15.7250, 5.9359

Inverse Universe

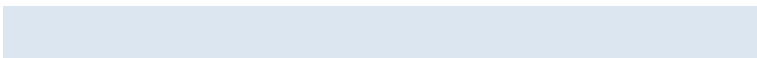
The Inverse Universe completely reimagines the original color for something new.



91.4714, -11.5681, 2.7263



97.7124, -13.3790, 2.5695



88.1296, -6.1669, -1.2646



42.3420, -5.6057, 1.1778



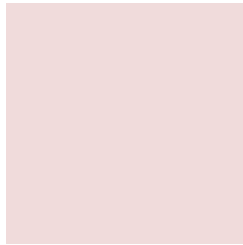
61.2728, -32.4757, -6.4800



17.6733, -9.3675, -1.8684

Previews

White Background



This preview shows how the HunterLab color 86.1991, 2.4995, 7.0626 looks on a white background.

Color Contrast Check

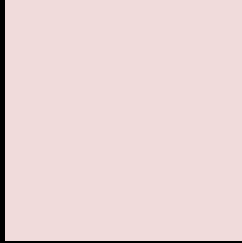
Large Text (above 18pt) WCAG AA × Fail

Any Text WCAG AA × Fail

Large Text (above 18pt) WCAG AAA × Fail

Any Text WCAG AAA × Fail

Black Background



This preview shows how the HunterLab color 86.1991, 2.4995, 7.0626 looks on a black background.

Color Contrast Check

Large Text (above 18pt) WCAG AA ✓ Pass

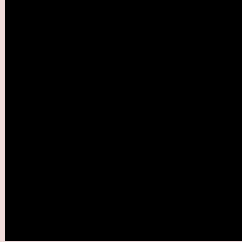
Any Text WCAG AA ✓ Pass

Large Text (above 18pt) WCAG AAA ✓ Pass

Any Text WCAG AAA ✓ Pass

If you want to check with other color combinations, try the [Color Contrast Checker](#).

HunterLab 86.1991, 2.4995, 7.0626 Background



This preview shows how black text looks on a background with the HunterLab color 86.1991, 2.4995, 7.0626.



This preview shows how white text looks on a background with the HunterLab color 86.1991, 2.4995,

Color Blindness Simulation

Color vision deficiency is a very complex topic, and I could not describe the different causes any better than Wikipedia does, so if you want to learn more, you should check out their [article about color blindness](#).

Dichromacy



Original Color

86.1991, 2.4995, 7.0626

Protanopia

86.3075, -3.2997, 6.1317

Deuteranopia

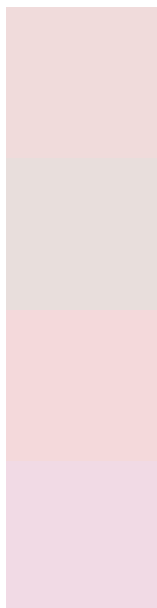
86.0235, 6.5372, 6.9310



Tritanopia

86.2806, 6.8236, -0.2059

Trichromacy



Original Color

86.1991, 2.4995, 7.0626

Protanomaly

86.3514, -1.6234, 6.6903

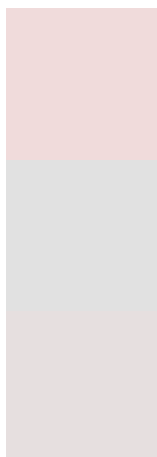
Deuteranomaly

86.0077, 4.9487, 6.8850

Tritanomaly

86.3138, 5.0666, 2.3549

Monochromacy



Original Color

86.1991, 2.4995, 7.0626

Achromatopsia

86.7722, -4.6299, 4.7145

Achromatomaly

86.5598, -2.3031, 5.4790

CSS Examples

Text

The CSS property to change the color of the text to HunterLab 86.1991, 2.4995, 7.0626 is called "color". The color property can be set on classes, ids or directly on the HTML element.

This example shows how text in the color `rgb(240, 219, 219)` looks like.

```
.text, #text, p{  
    color:rgb(240, 219, 219)  
}
```

If you want to add a text shadow in that color use the text-shadow property, you can generate a text shadow directly with our [CSS Text Shadow Generator](#).

Here you see how black text with a 4 pixel rgb(240, 219, 219) colored shadow looks like.

```
.shadow{ text-shadow: 4px 4px 2px rgb(240, 219, 219) }
```

Border

The CSS property to change the border of an element to HunterLab 86.1991, 2.4995, 7.0626 is called "border". The border property can be set on classes, ids or directly on the HTML element.

This example shows the color as border, it can be applied via the CSS property "border" or "border-color".

```
.border, #border, table{ border:4px solid rgb(240, 219, 219) }
```


If only the border color should be changed use the property `border-color`.

```
.border{ border-color:rgb(240, 219, 219) }
```

If you want to add a box shadow in that color use:

Here you see how a box with a 4 pixel `rgb(240, 219, 219)` colored shadow looks like.

```
.boxshadow{ -moz-box-shadow:4px 4px 4px  
4px rgb(240, 219, 219); -webkit-box-  
shadow:4px 4px 4px 4px rgb(240, 219, 219);  
box-shadow:4px 4px 4px 4px rgb(240, 219,  
219) }
```

Background

The CSS property to change the background color of an element to HunterLab 86.1991, 2.4995, 7.0626 is called "background". The background property can be set on classes, ids or directly on the HTML element.

```
.background, #background, body{  
background: rgb(240, 219, 219) }
```

If only the background color should be changed can be used:

```
.background{ background-color: rgb(240,  
219, 219) }
```

This example shows the color as background, it is applied via the CSS property "background".

To optimize and compress your CSS code, you can use our [online CSS compressor and optimizer](#) based on csstidy. If you want to create a linear or radial gradient as background or border, check our [CSS Gradient Generator](#).

Hey! You found this booklet interesting? Support Converting Colors with the new Membership Option!

The pro membership hides all ads, plus gives you double the colors in the color bucket, and more awesome pro features!

[Learn more, Memberships starting at \\$2.50/m!](#)

**Follow me
on Twitter!**

@ConvertingColor