

# Converting Colors

HunterLab(86.3424, 2.0406,  
9.9358)

Have a look what the booklet for  
HunterLab(86.3424, 2.0406, 9.9358)  
contains.

<b>HunterLab(86.2232, 2.2215, 9.8821)</b> .....	3
<b><i>Conversions</i></b> .....	4
<b><i>Details</i></b> .....	6
<b><i>Harmonies</i></b> .....	12
<b><i>Previews</i></b> .....	24
<b><i>Color Blindness Simulation</i></b> .....	28
<b><i>CSS Examples</i></b> .....	31

# Color

**HunterLab(86.2232, 2.2215,  
9.8821)**

# Conversions

## Conversions Part 1

Format	Color
Hex	F2DBD5
RGB	242, 219, 213
RGB Percent	95%, 86%, 84%
CMY	0.0510, 0.1412, 0.1647
CMYK	0.00, 0.10, 0.12, 0.05
HSL	12°, 53%, 89%
HSV	12°, 12%, 95%
XYZ	73.9597, 74.3444, 73.4026
YIQ	225.1930, 15.6340, 3.0100

# Conversions

## Conversions Part 2

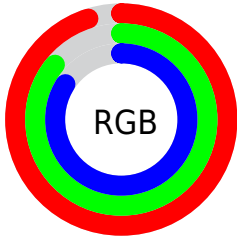
Format	Color
R <sub>Y</sub> B	242, 221, 213
Decimal	15915989
CIE Lab	89.09, 6.94, 5.82
CIE LCh	89, 9.052, 39.976
Yxy	74.3477, 0.3336, 0.3353
Android (android.graphics.Color)	4294106069 (0xFFFF2DBD5)
YUV	225.1930, -6.0111, 14.7397
Hunter-Lab	86.2232, 2.2215, 9.8821

# Details

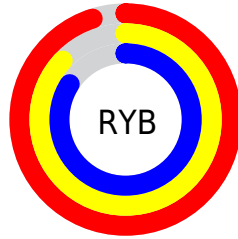
The HunterLab color  $86.2232, 2.2215, 9.8821$  is a light color, and the websafe version is hex `FFCCCC`. A complement of this color would be  $89.7476, -10.9474, -0.3860$ , and the grayscale version is  $86.8785, -4.6356, 4.7203$ .

A 20% lighter version of the original color is  $100.0000, -5.3358, 5.4332$ , and  $62.8161, 2.8751, 8.2254$  is the 20% darker color. If you saturate the color by 10%, you get  $79.8539, 8.6680, 13.6951$ , and if you desaturate by 10%, it is  $92.8798, -3.8624, 5.9205$ .

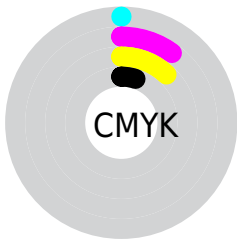
# Distribution



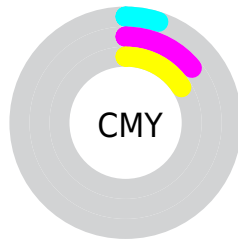
- Red (95%)
- Green (86%)
- Blue (84%)



- Red (95%)
- Yellow (87%)
- Blue (84%)



- Cyan (0%)
- Magenta (10%)
- Yellow (12%)
- Black (5%)



- Cyan (5%)
- Magenta (14%)
- Yellow (16%)

# Brightness & Saturation Gradients

These gradients show how the HunterLab color 86.2232, 2.2215, 9.8821 changes by changing the brightness by 10 percent. The first figure shows a shift by +10% for each color and the second figure -10%.

Similar to the brightness gradients but the following saturation gradients show a change of the HunterLab color 86.2232, 2.2215, 9.8821 by changing the saturation by 10% instead.



86.2232, 2.2215,  
9.8821

86.2232, 2.2215,  
9.8821

218.0992, -2.4158,  
19.0495

74.2150, 2.5381,  
8.9598

111.9770, 1.4466,  
11.7870

62.8209, 2.8074,  
8.0541

125.6699, 0.9991,  
12.7674

52.0782, 3.0222,  
7.1652

139.8794, 0.5140,  
13.7670

42.0291, 3.1764,  
6.2914

154.5875, -0.0069,  
14.7857

32.7251, 3.2617,  
5.4294

169.7777, -0.5617,  
15.8235

24.2317, 3.2671,  
4.5739

185.4352, -1.1490,

16.6351, 3.1759,

16.8802

3.7145

201.5465, -1.7675,  
17.9556

■ 10.0571, 2.9618,  
2.9799

0.0000, INF, NaN

■ 86.2232, 2.2215,  
9.8821

■ 86.2232, 2.2215,  
9.8821

■ 79.8539, 8.6680,  
13.6951

■ 92.8798, -3.8624,  
5.9205

■ 73.8076, 15.5123,  
17.3086

■ 98.8015, -9.5302,  
3.9409

■ 68.1363, 22.7598,  
20.6588

■ 62.8990, 30.3802,  
23.6571

■ 58.1640, 38.2790,  
26.1890

■ 54.0060, 46.2663,  
28.1192

■ 50.5003, 54.0302,  
29.3123

■ 47.7104, 61.1381,  
29.6811

■ 46.0083, 65.9975,  
29.5055

# Harmonies

## Analogous

The Analogous color harmony consists of three colors that are next to each other on the color wheel.



86.2251, 4.2037, 6.1264



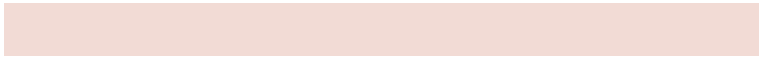
86.2232, 2.2215, 9.8821



86.2251, -1.5817, 12.1701

# Triad

The Triadic color harmony groups three colors that are evenly spaced from another and form a triangle on the color wheel.



86.2251, 2.2190, 9.8835



86.2251, -12.6920, 7.5017



86.2251, -3.0807, -3.9345

# Complementary

The Complementary color scheme is a pair of colors which are on the opposite of each other on the color wheel.



86.2232, 2.2215, 9.8821



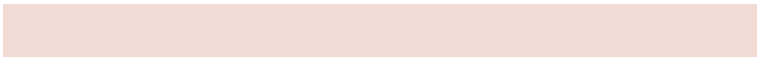
89.7476, -10.9474, -0.3860

# Split Complementary

Split-complementary colors differ from the complementary color scheme. The scheme consists of three colors, the original color and two neighbors of the complement color.



86.2251, -7.5880, -3.5191



86.2232, 2.2215, 9.8821



86.2251, -13.0744, 3.2356

# Square

The Square scheme is like the rectangle color scheme, but the four colors are evenly spaced on the color wheel.



86.2251, 2.2190, 9.8835



86.2251, -10.1681, 10.8453



86.2251, -11.2239, -0.8406



86.2251, 1.1021, -1.9479



# Rectangle

The Rectangle color scheme consists of four colors that form a rectangle on the color wheel.



86.2232, 2.2215, 9.8821



86.2251, -4.6017, 12.6267



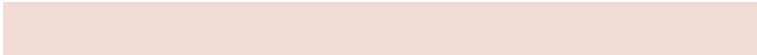
86.2251, -11.2239, -0.8406



86.2251, -4.6090, -4.0735

# Sweetspot

The Sweet Spot groups the original color and five complimentary colors.



86.2251, 2.2190, 9.8835



97.1123, -2.8198, 7.1471



85.1672, 9.3690, -2.7081



44.6796, -1.0827, 3.4546

0.0000, NaN, NaN



46.2646, -2.4686, 2.5136

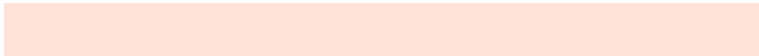


# Same Dimension

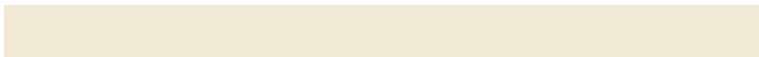
The Same Dimension uses a secret algorithm to generate beautiful new colors.



86.2251, 2.2190, 9.8835



90.0888, 3.7290, 11.3348



90.6257, -5.2525, 14.5662



40.3596, 0.3023, 4.0881



33.9531, 47.6463, 21.7559



10.4754, 11.7150, 6.6600

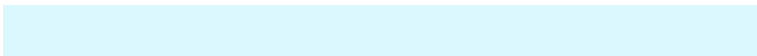


# Inverse Universe

The Inverse Universe completely reimagines the original color for something new.



89.7476, -10.9474, -0.3860



94.4568, -12.6058, -1.4015



85.2299, -3.5745, -5.9824



41.6422, -4.4898, 0.3492



48.8615, -16.7360, -24.9443

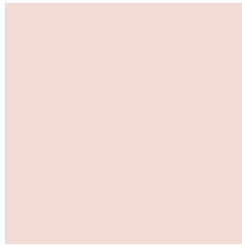


14.5746, -5.4799, -6.3874



# Previews

## White Background



This preview shows how the HunterLab color 86.2232, 2.2215, 9.8821 looks on a white background.

## Color Contrast Check

Large Text (above 18pt) WCAG AA × Fail

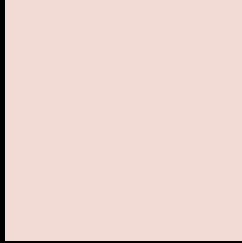
Any Text WCAG AA × Fail

Large Text (above 18pt) WCAG AAA × Fail

Any Text WCAG AAA × Fail



# Black Background



This preview shows how the HunterLab color 86.2232, 2.2215, 9.8821 looks on a black background.

## Color Contrast Check

Large Text (above 18pt) WCAG AA ✓ Pass

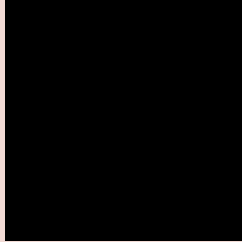
Any Text WCAG AA ✓ Pass

Large Text (above 18pt) WCAG AAA ✓ Pass

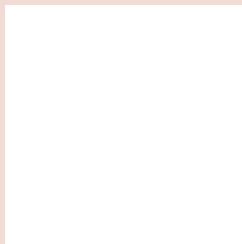
Any Text WCAG AAA ✓ Pass

If you want to check with other color combinations, try the [Color Contrast Checker](#).

## HunterLab 86.2232, 2.2215, 9.8821 Background



This preview shows how black text looks on a background with the HunterLab color 86.2232, 2.2215, 9.8821.



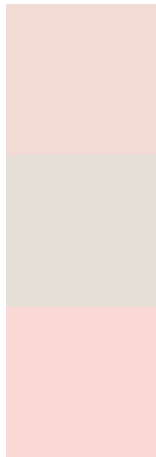
This preview shows how white text looks on a background with the HunterLab color 86.2232, 2.2215,

9.8821.

# Color Blindness Simulation

Color vision deficiency is a very complex topic, and I could not describe the different causes any better than Wikipedia does, so if you want to learn more, you should check out their [article about color blindness](#).

## Dichromacy



### Original Color

86.2232, 2.2215, 9.8821

### Protanopia

86.3161, -3.6339, 8.9635

### Deuteranopia

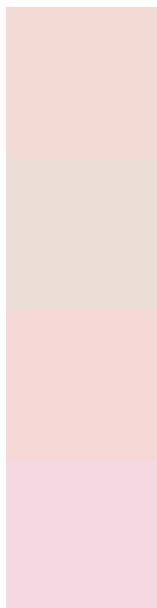
86.0851, 6.4423, 9.3418



## Tritanopia

86.2597, 8.2186, 0.3089

# Trichromacy



## Original Color

86.2232, 2.2215, 9.8821

## Protanomaly

86.3655, -1.9364, 9.5101

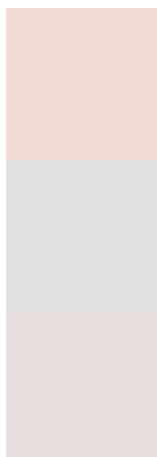
## Deuteranomaly

86.0660, 4.8435, 9.2922

## Tritanomaly

86.2263, 6.1205, 3.7649

# Monochromacy



## Original Color

86.2232, 2.2215, 9.8821

## Achromatopsia

86.7722, -4.6299, 4.7145

## Achromatomaly

86.5937, -2.3100, 6.4808

# CSS Examples

## Text

The CSS property to change the color of the text to HunterLab 86.2232, 2.2215, 9.8821 is called "color". The color property can be set on classes, ids or directly on the HTML element.

This example shows how text in the color `rgb(242, 219, 213)` looks like.

```
.text, #text, p{  
    color:rgb(242, 219, 213)  
}
```

If you want to add a text shadow in that color use the text-shadow property, you can generate a text shadow directly with our [CSS Text Shadow Generator](#).

Here you see how black text with a 4 pixel rgb(242, 219, 213) colored shadow looks like.

```
.shadow{ text-shadow: 4px 4px 2px rgb(242, 219, 213) }
```

## Border

The CSS property to change the border of an element to HunterLab 86.2232, 2.2215, 9.8821 is called "border". The border property can be set on classes, ids or directly on the HTML element.

This example shows the color as border, it can be applied via the CSS property "border" or "border-color".

```
.border, #border, table{ border:4px solid rgb(242, 219, 213) }
```



If only the border color should be changed use the property border-color.

```
.border{ border-color:rgb(242, 219, 213) }
```

If you want to add a box shadow in that color use:

Here you see how a box with a 4 pixel rgb(242, 219, 213) colored shadow looks like.

```
.boxshadow{ -moz-box-shadow:4px 4px 4px  
4px rgb(242, 219, 213); -webkit-box-  
shadow:4px 4px 4px 4px rgb(242, 219, 213);  
box-shadow:4px 4px 4px 4px rgb(242, 219,  
213) }
```

# Background

The CSS property to change the background color of an element to HunterLab 86.2232, 2.2215, 9.8821 is called "background". The background property can be set on classes, ids or directly on the HTML element.

```
.background, #background, body{  
background: rgb(242, 219, 213) }
```

If only the background color should be changed can be used:

```
.background{ background-color: rgb(242,  
219, 213) }
```

This example shows the color as background, it is applied via the CSS property "background".

To optimize and compress your CSS code, you can use our [online CSS compressor and optimizer](#) based on csstidy. If you want to create a linear or radial gradient as background or border, check our [CSS Gradient Generator](#).

Hey! You found this booklet interesting? Support Converting Colors with the new Membership Option!

The pro membership hides all ads, plus gives you double the colors in the color bucket, and more awesome pro features!

**[Learn more, Memberships starting at \\$2.50/m!](#)**

**Follow me  
on Twitter!**

@ConvertingColor