

Converting Colors

HunterLab(86.3748, 1.9654,
6.8962)

Have a look what the booklet for
HunterLab(86.3748, 1.9654, 6.8962)
contains.

HunterLab(86.4317, 1.7935, 6.8428)	3
<i>Conversions</i>	4
<i>Details</i>	6
<i>Harmonies</i>	12
<i>Previews</i>	24
<i>Color Blindness Simulation</i>	28
<i>CSS Examples</i>	31

Color

**HunterLab(86.4317, 1.7935,
6.8428)**

Conversions

Conversions Part 1

Format	Color
Hex	EFDCDC
RGB	239, 220, 220
RGB Percent	94%, 86%, 86%
CMY	0.0627, 0.1372, 0.1372
CMYK	0.00, 0.08, 0.08, 0.06
HSL	0°, 37%, 90%
HSV	0°, 8%, 94%
XYZ	74.1080, 74.7044, 78.2235
YIQ	225.6810, 11.3240, 4.0280

Conversions

Conversions Part 2

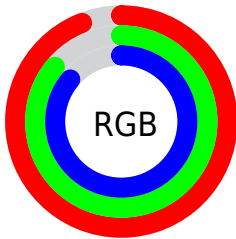
Format	Color
R _Y B	239, 220, 220
Decimal	15719644
CIE Lab	89.26, 6.51, 2.35
CIE LCh	89, 6.925, 19.834
Yxy	74.7077, 0.3264, 0.3290
Android (android.graphics.Color)	4293909724 (0xFFEFD CDC)
YUV	225.6810, -2.8007, 11.6808
Hunter-Lab	86.4317, 1.7935, 6.8428

Details

The HunterLab color **86.4317, 1.7935, 6.8428** is a light color, and the websafe version is hex **CCCCCC**. A complement of this color would be **91.2026, -10.9343, 2.9193**, and the grayscale version is **87.0789, -4.6463, 4.7312**.

A 20% lighter version of the original color is **100.0000, -5.3358, 5.4332**, and **63.0033, 2.4344, 5.3657** is the 20% darker color. If you saturate the color by 10%, you get **78.6581, 10.6192, 9.2438**, and if you desaturate by 10%, it is **94.6140, -6.6614, 4.5994**.

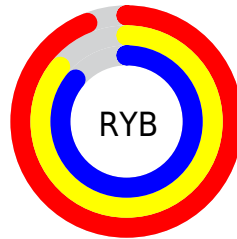
Distribution



Red (94%)

Green (86%)

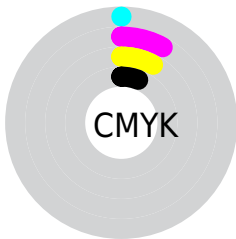
Blue (86%)



Red (94%)

Yellow (86%)

Blue (86%)

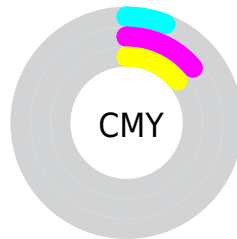


Cyan (0%)

Magenta (8%)

Yellow (8%)

Black (6%)



Cyan (6%)

Magenta (14%)

Yellow (14%)

Brightness & Saturation Gradients

These gradients show how the HunterLab color 86.4317, 1.7935, 6.8428 changes by changing the brightness by 10 percent. The first figure shows a shift by +10% for each color and the second figure -10%.

Similar to the brightness gradients but the following saturation gradients show a change of the HunterLab color 86.4317, 1.7935, 6.8428 by changing the saturation by 10% instead.

86.4317, 1.7935,
6.8428

86.4317, 1.7935,
6.8428

218.3832, -2.9942,
14.8186

74.4133, 2.1303,
6.0830

112.2045, 0.9811,
8.4463

63.0086, 2.4208,
5.3493

125.9062, 0.5159,
9.2856

52.2545, 2.6580,
4.6440

140.1244, 0.0136,
10.1496

42.1932, 2.8360,
3.9678

154.8407, -0.5238,
11.0376

32.8761, 2.9470,
3.3215

170.0389, -1.0947,
11.9490

24.3683, 2.9801,
2.7052

185.7043, -1.6975,

16.7556, 2.9197,

12.8833

2.1185

201.8232, -2.3311,
13.8400

■ 10.1591, 2.7403,
1.5587

0.0000, INF, NaN

■ 86.4317, 1.7935,
6.8428

■ 86.4317, 1.7935,
6.8428

■ 78.6581, 10.6192,
9.2438

■ 94.6140, -6.6614,
4.5994

■ 71.3615, 19.8366,
11.8082

■ 98.5347, -10.4711,
3.6063

■ 64.6369, 29.4008,
14.5296

■ 58.5993, 39.1616,
17.3659

■ 53.3830, 48.7896,
20.2162

■ 49.1307, 57.7169,
22.9004

■ 45.9652, 65.1646,
25.1662

■ 43.9431, 70.3578,
26.7583

■ 42.9758, 72.9794,
27.5650

Harmonies

Analogous

The Analogous color harmony consists of three colors that are next to each other on the color wheel.



86.4336, 2.0927, 3.5698



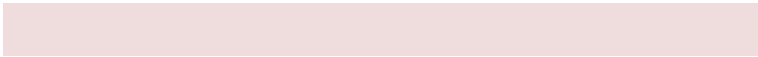
86.4317, 1.7935, 6.8428



86.4336, -0.2426, 9.4452

Triad

The Triadic color harmony groups three colors that are evenly spaced from another and form a triangle on the color wheel.



86.4336, 1.7911, 6.8442



86.4336, -9.6883, 8.7243



86.4336, -5.7985, -1.8217

Complementary

The Complementary color scheme is a pair of colors which are on the opposite of each other on the color wheel.



86.4317, 1.7935, 6.8428



91.2026, -10.9343, 2.9193

Split Complementary

Split-complementary colors differ from the complementary color scheme. The scheme consists of three colors, the original color and two neighbors of the complement color.



86.4336, -8.9051, -0.3202



86.4317, 1.7935, 6.8428



86.4336, -11.1272, 5.8246

Square

The Square scheme is like the rectangle color scheme, but the four colors are evenly spaced on the color wheel.



86.4336, 1.7911, 6.8442



86.4336, -6.8831, 10.5004



86.4336, -10.8428, 2.5093



86.4336, -2.3263, -1.5222

Rectangle

The Rectangle color scheme consists of four colors that form a rectangle on the color wheel.



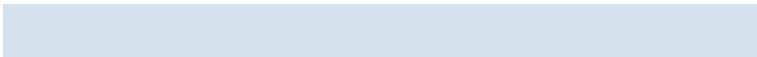
86.4317, 1.7935, 6.8428



86.4336, -2.2894, 10.4887



86.4336, -10.8428, 2.5093



86.4336, -6.9192, -1.5086

Sweetspot

The Sweet Spot groups the original color and five complimentary colors.



86.4336, 1.7911, 6.8442



98.2169, -3.5251, 5.9119



87.0460, 5.0985, -1.8963



45.4804, -1.6725, 2.7241

0.0000, NaN, NaN



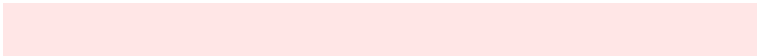
46.2646, -2.4686, 2.5136

Same Dimension

The Same Dimension uses a secret algorithm to generate beautiful new colors.



86.4336, 1.7911, 6.8442



91.2491, 3.8749, 7.8911



89.3503, -3.1878, 10.0705



39.6981, 1.4512, 3.3543



31.8464, 54.5307, 20.5782



9.1865, 15.7245, 5.9359

Inverse Universe

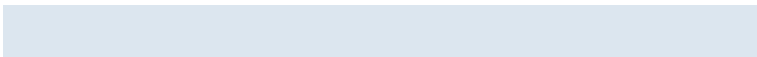
The Inverse Universe completely reimagines the original color for something new.



91.2026, -10.9343, 2.9193



97.7122, -13.3787, 2.5693



88.1841, -6.0433, -0.6722



42.3419, -5.6056, 1.1777



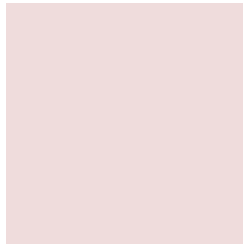
61.2715, -32.4741, -6.4818



17.6730, -9.3671, -1.8688

Previews

White Background



This preview shows how the HunterLab color 86.4317, 1.7935, 6.8428 looks on a white background.

Color Contrast Check

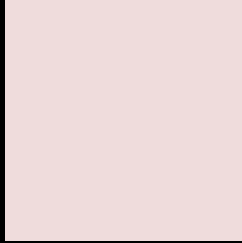
Large Text (above 18pt) WCAG AA × Fail

Any Text WCAG AA × Fail

Large Text (above 18pt) WCAG AAA × Fail

Any Text WCAG AAA × Fail

Black Background



This preview shows how the HunterLab color 86.4317, 1.7935, 6.8428 looks on a black background.

Color Contrast Check

Large Text (above 18pt) WCAG AA ✓ Pass

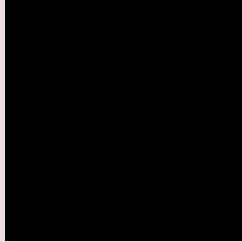
Any Text WCAG AA ✓ Pass

Large Text (above 18pt) WCAG AAA ✓ Pass

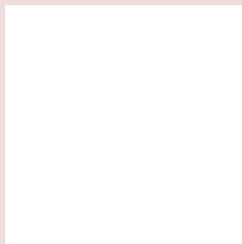
Any Text WCAG AAA ✓ Pass

If you want to check with other color combinations, try the [Color Contrast Checker](#).

HunterLab 86.4317, 1.7935, 6.8428 Background



This preview shows how black text looks on a background with the HunterLab color 86.4317, 1.7935, 6.8428.



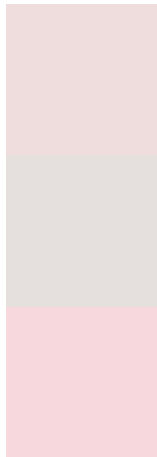
This preview shows how white text looks on a background with the HunterLab color 86.4317, 1.7935,

6.8428.

Color Blindness Simulation

Color vision deficiency is a very complex topic, and I could not describe the different causes any better than Wikipedia does, so if you want to learn more, you should check out their [article about color blindness](#).

Dichromacy



Original Color

86.4317, 1.7935, 6.8428

Protanopia

86.4334, -2.8021, 5.8059

Deuteranopia

86.3831, 6.3326, 6.3880



Tritanopia

86.5111, 6.1243, -0.4513

Trichromacy



Original Color

86.4317, 1.7935, 6.8428

Protanomaly

86.4793, -1.1219, 6.3691

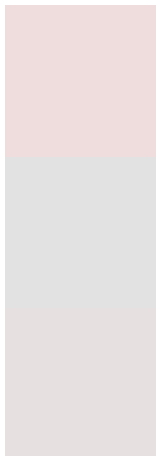
Deuteranomaly

86.3692, 4.7474, 6.3442

Tritanomaly

86.5456, 4.3659, 2.1190

Monochromacy



Original Color

86.4317, 1.7935, 6.8428

Achromatopsia

87.2081, -4.6532, 4.7382

Achromatomaly

86.9954, -2.3245, 5.5033

CSS Examples

Text

The CSS property to change the color of the text to HunterLab 86.4317, 1.7935, 6.8428 is called "color". The color property can be set on classes, ids or directly on the HTML element.

This example shows how text in the color `rgb(239, 220, 220)` looks like.

```
.text, #text, p{  
    color:rgb(239, 220, 220)  
}
```

If you want to add a text shadow in that color use the text-shadow property, you can generate a text shadow directly with our [CSS Text Shadow Generator](#).

Here you see how black text with a 4 pixel rgb(239, 220, 220) colored shadow looks like.

```
.shadow{ text-shadow: 4px 4px 2px rgb(239, 220, 220) }
```

Border

The CSS property to change the border of an element to HunterLab 86.4317, 1.7935, 6.8428 is called "border". The border property can be set on classes, ids or directly on the HTML element.

This example shows the color as border, it can be applied via the CSS property "border" or "border-color".

```
.border, #border, table{ border:4px solid rgb(239, 220, 220) }
```


If only the border color should be changed use the property `border-color`.

```
.border{ border-color:rgb(239, 220, 220) }
```

If you want to add a box shadow in that color use:

Here you see how a box with a 4 pixel `rgb(239, 220, 220)` colored shadow looks like.

```
.boxshadow{ -moz-box-shadow:4px 4px 4px 4px rgb(239, 220, 220); -webkit-box-shadow:4px 4px 4px 4px rgb(239, 220, 220); box-shadow:4px 4px 4px 4px rgb(239, 220, 220) }
```

Background

The CSS property to change the background color of an element to HunterLab 86.4317, 1.7935, 6.8428 is called "background". The background property can be set on classes, ids or directly on the HTML element.

```
.background, #background, body{  
background: rgb(239, 220, 220) }
```

If only the background color should be changed can be used:

```
.background{ background-color: rgb(239,  
220, 220) }
```

This example shows the color as background, it is applied via the CSS property "background".

To optimize and compress your CSS code, you can use our [online CSS compressor and optimizer](#) based on csstidy. If you want to create a linear or radial gradient as background or border, check our [CSS Gradient Generator](#).

Hey! You found this booklet interesting? Support Converting Colors with the new Membership Option!

The pro membership hides all ads, plus gives you double the colors in the color bucket, and more awesome pro features!

[Learn more, Memberships starting at \\$2.50/m!](#)

**Follow me
on Twitter!**

@ConvertingColor