

Converting Colors

HunterLab(86.3925, 3.8615,
3.7971)

Have a look what the booklet for
HunterLab(86.3925, 3.8615, 3.7971)
contains.

HunterLab(86.4172, 3.6750, 3.9490)	3
<i>Conversions</i>	4
<i>Details</i>	6
<i>Harmonies</i>	12
<i>Previews</i>	24
<i>Color Blindness Simulation</i>	28
<i>CSS Examples</i>	31

Color

**HunterLab(86.4172, 3.6750,
3.9490)**

Conversions

Conversions Part 1

Format	Color
Hex	F0DBE2
RGB	240, 219, 226
RGB Percent	94%, 86%, 89%
CMY	0.0588, 0.1412, 0.1137
CMYK	0.00, 0.09, 0.06, 0.06
HSL	340°, 41%, 90%
HSV	340°, 9%, 94%
XYZ	74.9942, 74.6793, 82.4134
YIQ	226.0770, 10.2690, 6.6290

Conversions

Conversions Part 2

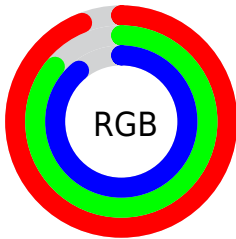
Format	Color
R _Y B	240, 219, 226
Decimal	15784930
CIE Lab	89.24, 8.39, -0.81
CIE LCh	89, 8.431, 354.464
Yxy	74.6826, 0.3231, 0.3218
Android (android.graphics.Color)	4293975010 (0xFFFF0DBE2)
YUV	226.0770, -0.0380, 12.2105
Hunter-Lab	86.4172, 3.6750, 3.9490

Details

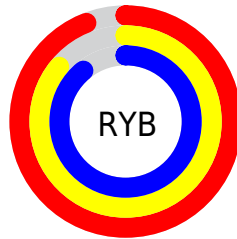
The HunterLab color $86.4172, 3.6750, 3.9490$ is a light color, and the websafe version is hex `CCCCCC`. A complement of this color would be $91.2499, -12.8097, 5.9107$, and the grayscale version is $87.2403, -4.6549, 4.7399$.

A 20% lighter version of the original color is $100.0000, -5.3358, 5.4332$, and $62.9933, 4.2217, 2.6270$ is the 20% darker color. If you saturate the color by 10%, you get $78.8741, 13.7895, 3.0107$, and if you desaturate by 10%, it is $94.3617, -6.2040, 5.2520$.

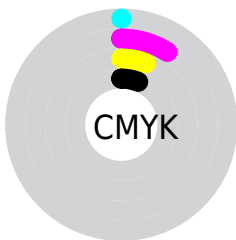
Distribution



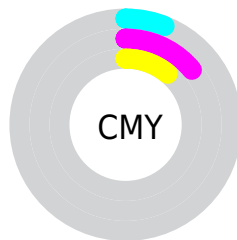
- Red (94%)
- Green (86%)
- Blue (89%)



- Red (94%)
- Yellow (86%)
- Blue (89%)



- Cyan (0%)
- Magenta (9%)
- Yellow (6%)
- Black (6%)



- Cyan (6%)
- Magenta (14%)
- Yellow (11%)

Brightness & Saturation Gradients

These gradients show how the HunterLab color 86.4172, 3.6750, 3.9490 changes by changing the brightness by 10 percent. The first figure shows a shift by +10% for each color and the second figure -10%.

Similar to the brightness gradients but the following saturation gradients show a change of the HunterLab color 86.4172, 3.6750, 3.9490 by changing the saturation by 10% instead.

86.4172, 3.6750,
3.9490

86.4172, 3.6750,
3.9490

218.3634, -0.4693,
10.8618

74.3995, 3.9263,
3.3326

112.1887, 3.0231,
5.2853

62.9955, 4.1270,
2.7501

125.8898, 2.6336,
5.9991

52.2422, 4.2694,
2.2054

140.1073, 2.2044,
6.7422

42.1818, 4.3468,
1.7011

154.8231, 1.7378,
7.5135

32.8656, 4.3501,
1.2408

170.0208, 1.2355,
8.3120

24.3588, 4.2670,
0.8289

185.6856, 0.6993,

16.7472, 4.0792,

9.1367

0.4716

201.8039, 0.1306,
9.9869

■ 10.1520, 3.7582,
0.1783

0.0000, INF, NaN

■ 86.4172, 3.6750,
3.9490

■ 86.4172, 3.6750,
3.9490

■ 78.8741, 13.7895,
3.0107

■ 94.3617, -6.2040,
5.2520

■ 71.7971, 24.1138,
2.5177

■ 98.6233, -10.1585,
3.7174

■ 65.2753, 34.5433,
2.5736

■ 59.4146, 44.8575,
3.2910

■ 54.3369, 54.6602,
4.7727

■ 50.1693, 63.3461,
7.0721

■ 47.0191, 70.1607,
10.1351

■ 44.9343, 74.4283,
13.7525

■ 43.8172, 76.0451,
17.5374

Harmonies

Analogous

The Analogous color harmony consists of three colors that are next to each other on the color wheel.



86.4191, 2.1379, 0.0609



86.4172, 3.6750, 3.9490



86.4191, 2.9520, 7.8630

Triad

The Triadic color harmony groups three colors that are evenly spaced from another and form a triangle on the color wheel.



86.4191, 3.6727, 3.9505



86.4191, -7.9753, 11.4874



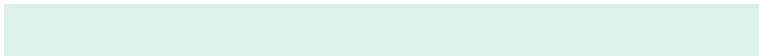
86.4191, -9.3160, -1.8666

Complementary

The Complementary color scheme is a pair of colors which are on the opposite of each other on the color wheel.



86.4172, 3.6750, 3.9490



91.2499, -12.8097, 5.9107

Split Complementary

Split-complementary colors differ from the complementary color scheme. The scheme consists of three colors, the original color and two neighbors of the complement color.



86.4191, -11.9317, 1.4211



86.4172, 3.6750, 3.9490



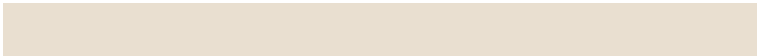
86.4191, -11.1681, 9.1030

Square

The Square scheme is like the rectangle color scheme, but the four colors are evenly spaced on the color wheel.



86.4191, 3.6727, 3.9505



86.4191, -3.8257, 12.0920



86.4191, -12.6031, 5.4509



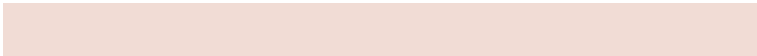
86.4191, -5.4029, -3.3999

Rectangle

The Rectangle color scheme consists of four colors that form a rectangle on the color wheel.



86.4172, 3.6750, 3.9490



86.4191, 1.2965, 9.9760



86.4191, -12.6031, 5.4509



86.4191, -10.3731, -0.9225

Sweetspot

The Sweet Spot groups the original color and five complimentary colors.



86.4191, 3.6727, 3.9505



97.4123, -2.1688, 4.9898



86.1867, 3.8141, -3.5373



44.7502, -0.6100, 2.2561

0.0000, NaN, NaN



46.2646, -2.4686, 2.5136

Same Dimension

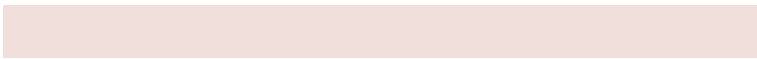
The Same Dimension uses a secret algorithm to generate beautiful new colors.



86.4191, 3.6727, 3.9505



91.5142, 5.3123, 4.0793



87.2648, 0.6543, 8.2473



39.8067, 2.0403, 1.7938



32.3726, 56.4856, 12.8054



9.4319, 16.6399, 2.3164

Inverse Universe

The Inverse Universe completely reimagines the original color for something new.



86.4191, 3.6727, 3.9505



91.5142, 5.3123, 4.0793



90.3508, -9.7762, 1.4044



39.8067, 2.0403, 1.7938



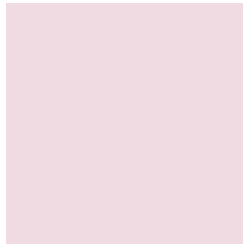
32.3726, 56.4856, 12.8054



9.4319, 16.6399, 2.3164

Previews

White Background



This preview shows how the HunterLab color 86.4172, 3.6750, 3.9490 looks on a white background.

Color Contrast Check

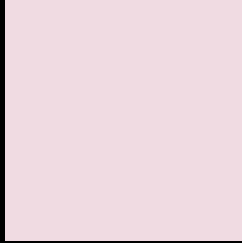
Large Text (above 18pt) WCAG AA × Fail

Any Text WCAG AA × Fail

Large Text (above 18pt) WCAG AAA × Fail

Any Text WCAG AAA × Fail

Black Background



This preview shows how the HunterLab color 86.4172, 3.6750, 3.9490 looks on a black background.

Color Contrast Check

Large Text (above 18pt) WCAG AA ✓ Pass

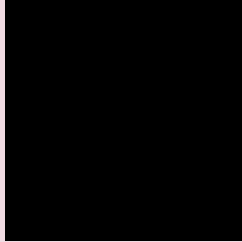
Any Text WCAG AA ✓ Pass

Large Text (above 18pt) WCAG AAA ✓ Pass

Any Text WCAG AAA ✓ Pass

If you want to check with other color combinations, try the [Color Contrast Checker](#).

HunterLab 86.4172, 3.6750, 3.9490 Background



This preview shows how black text looks on a background with the HunterLab color 86.4172, 3.6750, 3.9490.



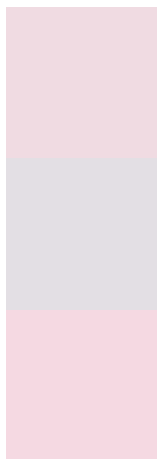
This preview shows how white text looks on a background with the HunterLab color 86.4172, 3.6750,

3.9490.

Color Blindness Simulation

Color vision deficiency is a very complex topic, and I could not describe the different causes any better than Wikipedia does, so if you want to learn more, you should check out their [article about color blindness](#).

Dichromacy



Original Color

86.4172, 3.6750, 3.9490

Protanopia

86.4336, -2.4225, 2.8689

Deuteranopia

86.3303, 6.4690, 3.8946



Tritanopia

86.5111, 6.1243, -0.4513

Trichromacy



Original Color

86.4172, 3.6750, 3.9490

Protanomaly

86.5704, -0.4326, 3.5647

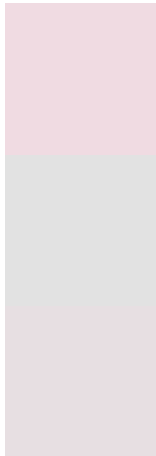
Deuteranomaly

86.4225, 5.2400, 3.9827

Tritanomaly

86.4117, 5.5915, 0.9622

Monochromacy



Original Color

86.4172, 3.6750, 3.9490

Achromatopsia

87.2081, -4.6532, 4.7382

Achromatomaly

86.7498, -1.4600, 4.2533

CSS Examples

Text

The CSS property to change the color of the text to HunterLab 86.4172, 3.6750, 3.9490 is called "color". The color property can be set on classes, ids or directly on the HTML element.

This example shows how text in the color `rgb(240, 219, 226)` looks like.

```
.text, #text, p{  
    color:rgb(240, 219, 226)  
}
```

If you want to add a text shadow in that color use the text-shadow property, you can generate a text shadow directly with our [CSS Text Shadow Generator](#).

Here you see how black text with a 4 pixel rgb(240, 219, 226) colored shadow looks like.

```
.shadow{ text-shadow: 4px 4px 2px rgb(240, 219, 226) }
```

Border

The CSS property to change the border of an element to HunterLab 86.4172, 3.6750, 3.9490 is called "border".

The border property can be set on classes, ids or directly on the HTML element.

This example shows the color as border, it can be applied via the CSS property "border" or "border-color".

```
.border, #border, table{ border:4px solid rgb(240, 219, 226) }
```


If only the border color should be changed use the property `border-color`.

```
.border{ border-color:rgb(240, 219, 226) }
```

If you want to add a box shadow in that color use:

Here you see how a box with a 4 pixel `rgb(240, 219, 226)` colored shadow looks like.

```
.boxshadow{ -moz-box-shadow:4px 4px 4px  
4px rgb(240, 219, 226); -webkit-box-  
shadow:4px 4px 4px 4px rgb(240, 219, 226);  
box-shadow:4px 4px 4px 4px rgb(240, 219,  
226) }
```

Background

The CSS property to change the background color of an element to HunterLab 86.4172, 3.6750, 3.9490 is called "background". The background property can be set on classes, ids or directly on the HTML element.

```
.background, #background, body{  
background: rgb(240, 219, 226) }
```

If only the background color should be changed can be used:

```
.background{ background-color: rgb(240,  
219, 226) }
```

This example shows the color as background, it is applied via the CSS property "background".

To optimize and compress your CSS code, you can use our [online CSS compressor and optimizer](#) based on csstidy. If you want to create a linear or radial gradient as background or border, check our [CSS Gradient Generator](#).

Hey! You found this booklet interesting? Support Converting Colors with the new Membership Option!

The pro membership hides all ads, plus gives you double the colors in the color bucket, and more awesome pro features!

[Learn more, Memberships starting at \\$2.50/m!](#)

**Follow me
on Twitter!**

@ConvertingColor