

Converting Colors

HunterLab(86.5471, 2.3551,
8.1705)

Have a look what the booklet for
HunterLab(86.5471, 2.3551, 8.1705)
contains.

HunterLab(86.6449, 2.3365, 8.5106)	3
<i>Conversions</i>	4
<i>Details</i>	6
<i>Harmonies</i>	12
<i>Previews</i>	24
<i>Color Blindness Simulation</i>	28
<i>CSS Examples</i>	31

Color

**HunterLab(86.6449, 2.3365,
8.5106)**

Conversions

Conversions Part 1

Format	Color
Hex	F2DCD9
RGB	242, 220, 217
RGB Percent	95%, 86%, 85%
CMY	0.0510, 0.1372, 0.1490
CMYK	0.00, 0.09, 0.10, 0.05
HSL	7°, 49%, 90%
HSV	7°, 10%, 95%
XYZ	74.7355, 75.0734, 76.1973
YIQ	226.2360, 14.0750, 3.7310

Conversions

Conversions Part 2

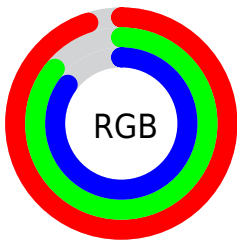
Format	Color
R _Y B	242, 220, 217
Decimal	15916249
CIE Lab	89.43, 7.06, 4.21
CIE LCh	89, 8.222, 30.785
Yxy	75.0767, 0.3307, 0.3322
Android (android.graphics.Color)	4294106329 (0xFF2DCD9)
YUV	226.2360, -4.5533, 13.8250
Hunter-Lab	86.6449, 2.3365, 8.5106

Details

The HunterLab color **86.6449, 2.3365, 8.5106** is a light color, and the websafe version is hex **CCCCCC**. A complement of this color would be **91.0461, -11.2929, 1.1996**, and the grayscale version is **87.3275, -4.6596, 4.7447**.

A 20% lighter version of the original color is **100.0000, -5.3358, 5.4332**, and **63.2123, 2.9704, 6.9418** is the 20% darker color. If you saturate the color by 10%, you get **79.6455, 9.8368, 11.7781**, and if you desaturate by 10%, it is **93.9826, -4.7982, 5.2283**.

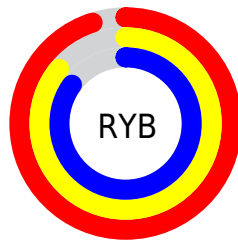
Distribution



Red (95%)

Green (86%)

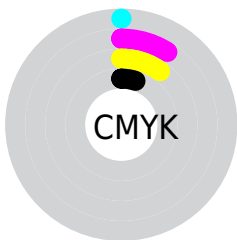
Blue (85%)



Red (95%)

Yellow (86%)

Blue (85%)

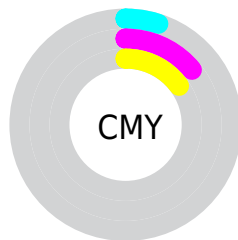


Cyan (0%)

Magenta (9%)

Yellow (10%)

Black (5%)



Cyan (5%)

Magenta (14%)

Yellow (15%)

Brightness & Saturation Gradients

These gradients show how the HunterLab color 86.6449, 2.3365, 8.5106 changes by changing the brightness by 10 percent. The first figure shows a shift by +10% for each color and the second figure -10%.

Similar to the brightness gradients but the following saturation gradients show a change of the HunterLab color 86.6449, 2.3365, 8.5106 by changing the saturation by 10% instead.

86.6449, 2.3365,
8.5106

86.6449, 2.3365,
8.5106

218.6735, -2.2683,
17.1263

74.6162, 2.6490,
7.6638

112.4371, 1.5696,
10.2756

63.2005, 2.9140,
6.8382

126.1479, 1.1259,
11.1907

52.4348, 3.1244,
6.0349

140.3748, 0.6444,
12.1275

42.3611, 3.2739,
5.2535

155.0996, 0.1271,
13.0857

33.0307, 3.3545,
4.4926

170.3061, -0.4242,
14.0650

24.5082, 3.3550,
3.7496

185.9794, -1.0081,

16.8791, 3.2588,

15.0652

3.0192

202.1060, -1.6232,
16.0857

■ 10.2637, 3.0399,
2.3186

0.0000, INF, NaN

■ 86.6449, 2.3365,
8.5106

■ 86.6449, 2.3365,
8.5106

■ 79.6455, 9.8368,
11.7781

■ 93.9826, -4.7982,
5.2283

■ 73.0331, 17.7332,
14.9994

■ 98.8015, -9.5302,
3.9409

■ 66.8759, 26.0143,
18.1287

■ 61.2545, 34.6093,
21.0892

■ 56.2623, 43.3450,
23.7652

■ 52.0011, 51.9006,
25.9999

■ 48.5687, 59.7873,
27.6134

■ 46.0370, 66.3995,
28.4589

■ 44.4524, 71.0225,
28.6347

Harmonies

Analogous

The Analogous color harmony consists of three colors that are next to each other on the color wheel.



86.6468, 3.4957, 4.8203



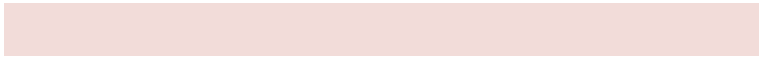
86.6449, 2.3365, 8.5106



86.6468, -0.6988, 11.0831

Triad

The Triadic color harmony groups three colors that are evenly spaced from another and form a triangle on the color wheel.



86.6468, 2.3341, 8.5120



86.6468, -11.4826, 8.3400



86.6468, -4.5186, -3.2216

Complementary

The Complementary color scheme is a pair of colors which are on the opposite of each other on the color wheel.



86.6449, 2.3365, 8.5106



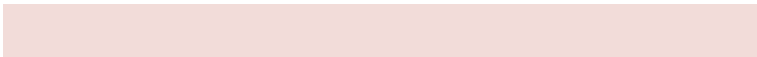
91.0461, -11.2929, 1.1996

Split Complementary

Split-complementary colors differ from the complementary color scheme. The scheme consists of three colors, the original color and two neighbors of the complement color.



86.6468, -8.4882, -2.1733



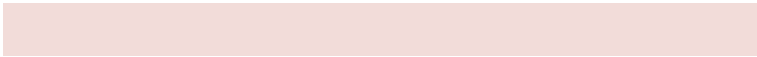
86.6449, 2.3365, 8.5106



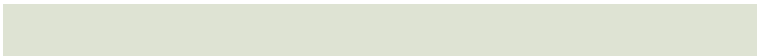
86.6468, -12.4628, 4.6124

Square

The Square scheme is like the rectangle color scheme, but the four colors are evenly spaced on the color wheel.



86.6468, 2.3341, 8.5120



86.6468, -8.6740, 10.9871



86.6468, -11.3768, 0.7410



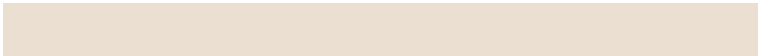
86.6468, -0.5062, -2.0611

Rectangle

The Rectangle color scheme consists of four colors that form a rectangle on the color wheel.



86.6449, 2.3365, 8.5106



86.6468, -3.3464, 11.8792



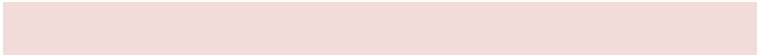
86.6468, -11.3768, 0.7410



86.6468, -5.9020, -3.1154

Sweetspot

The Sweet Spot groups the original color and five complimentary colors.



86.6468, 2.3341, 8.5120



97.6205, -3.1014, 6.4825



86.4528, 7.7397, -2.6415



44.8717, -1.1560, 3.1288

0.0000, NaN, NaN



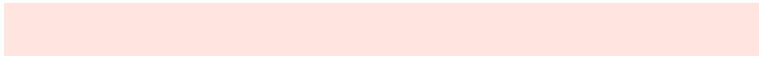
46.2646, -2.4686, 2.5136

Same Dimension

The Same Dimension uses a secret algorithm to generate beautiful new colors.



86.6468, 2.3341, 8.5120



90.6603, 3.8045, 9.6255



90.4633, -4.1716, 12.6449



40.0808, 0.7842, 3.7802



32.7372, 51.5397, 21.0748



9.9498, 13.2592, 6.3631

Inverse Universe

The Inverse Universe completely reimagines the original color for something new.



91.0461, -11.2929, 1.1996



96.0872, -13.0121, 0.6036



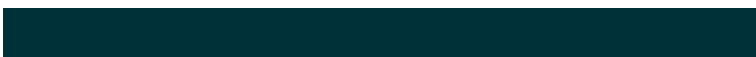
87.1057, -4.8932, -3.5911



41.9353, -4.9593, 0.6979



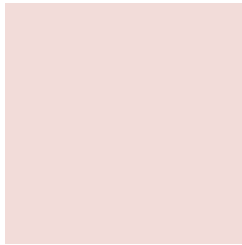
53.9644, -23.4912, -16.7400



15.8532, -7.1423, -4.3970

Previews

White Background



This preview shows how the HunterLab color 86.6449, 2.3365, 8.5106 looks on a white background.

Color Contrast Check

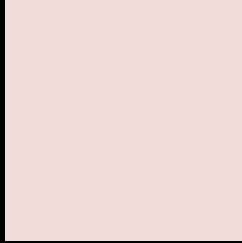
Large Text (above 18pt) WCAG AA × Fail

Any Text WCAG AA × Fail

Large Text (above 18pt) WCAG AAA × Fail

Any Text WCAG AAA × Fail

Black Background



This preview shows how the HunterLab color 86.6449, 2.3365, 8.5106 looks on a black background.

Color Contrast Check

Large Text (above 18pt) WCAG AA ✓ Pass

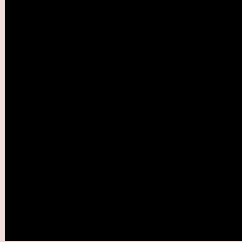
Any Text WCAG AA ✓ Pass

Large Text (above 18pt) WCAG AAA ✓ Pass

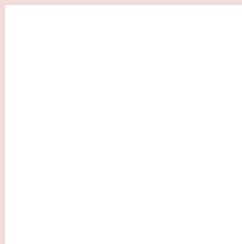
Any Text WCAG AAA ✓ Pass

If you want to check with other color combinations, try the [Color Contrast Checker](#).

HunterLab 86.6449, 2.3365, 8.5106 Background



This preview shows how black text looks on a background with the HunterLab color 86.6449, 2.3365, 8.5106.



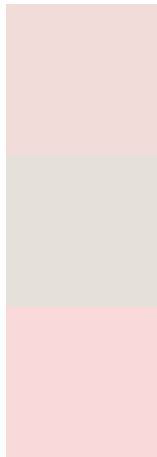
This preview shows how white text looks on a background with the HunterLab color 86.6449, 2.3365,

8.5106.

Color Blindness Simulation

Color vision deficiency is a very complex topic, and I could not describe the different causes any better than Wikipedia does, so if you want to learn more, you should check out their [article about color blindness](#).

Dichromacy



Original Color

86.6449, 2.3365, 8.5106

Protanopia

86.7461, -3.4947, 7.5854

Deuteranopia

86.5028, 6.5506, 7.9542



Tritanopia

86.4866, 7.5120, 0.0604

Trichromacy



Original Color

86.6449, 2.3365, 8.5106

Protanomaly

86.7927, -1.8066, 8.1384

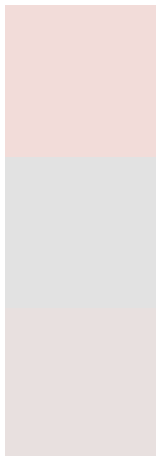
Deuteranomaly

86.4856, 4.9562, 7.9066

Tritanomaly

86.4864, 5.5826, 3.0723

Monochromacy



Original Color

86.6449, 2.3365, 8.5106

Achromatopsia

87.2081, -4.6532, 4.7382

Achromatomaly

87.0602, -2.1631, 6.0646

CSS Examples

Text

The CSS property to change the color of the text to HunterLab 86.6449, 2.3365, 8.5106 is called "color". The color property can be set on classes, ids or directly on the HTML element.

This example shows how text in the color `rgb(242, 220, 217)` looks like.

```
.text, #text, p{  
    color:rgb(242, 220, 217)  
}
```

If you want to add a text shadow in that color use the text-shadow property, you can generate a text shadow directly with our [CSS Text Shadow Generator](#).

Here you see how black text with a 4 pixel rgb(242, 220, 217) colored shadow looks like.

```
.shadow{ text-shadow: 4px 4px 2px rgb(242, 220, 217) }
```

Border

The CSS property to change the border of an element to HunterLab 86.6449, 2.3365, 8.5106 is called "border". The border property can be set on classes, ids or directly on the HTML element.

This example shows the color as border, it can be applied via the CSS property "border" or "border-color".

```
.border, #border, table{ border:4px solid rgb(242, 220, 217) }
```


If only the border color should be changed use the property border-color.

```
.border{ border-color:rgb(242, 220, 217) }
```

If you want to add a box shadow in that color use:

Here you see how a box with a 4 pixel rgb(242, 220, 217) colored shadow looks like.

```
.boxshadow{ -moz-box-shadow:4px 4px 4px  
4px rgb(242, 220, 217); -webkit-box-  
shadow:4px 4px 4px 4px rgb(242, 220, 217);  
box-shadow:4px 4px 4px 4px rgb(242, 220,  
217) }
```

Background

The CSS property to change the background color of an element to HunterLab 86.6449, 2.3365, 8.5106 is called "background". The background property can be set on classes, ids or directly on the HTML element.

```
.background, #background, body{  
background: rgb(242, 220, 217) }
```

If only the background color should be changed can be used:

```
.background{ background-color: rgb(242,  
220, 217) }
```

This example shows the color as background, it is applied via the CSS property "background".

To optimize and compress your CSS code, you can use our [online CSS compressor and optimizer](#) based on csstidy. If you want to create a linear or radial gradient as background or border, check our [CSS Gradient Generator](#).

Hey! You found this booklet interesting? Support Converting Colors with the new Membership Option!

The pro membership hides all ads, plus gives you double the colors in the color bucket, and more awesome pro features!

[Learn more, Memberships starting at \\$2.50/m!](#)

**Follow me
on Twitter!**

@ConvertingColor