

Converting Colors

HunterLab(86.8903, 1.4509,
6.8779)

Have a look what the booklet for
HunterLab(86.8903, 1.4509, 6.8779)
contains.

HunterLab(86.7664, 1.4324, 6.7459)	3
<i>Conversions</i>	4
<i>Details</i>	6
<i>Harmonies</i>	12
<i>Previews</i>	24
<i>Color Blindness Simulation</i>	28
<i>CSS Examples</i>	31

Color

**HunterLab(86.7664, 1.4324,
6.7459)**

Conversions

Conversions Part 1

Format	Color
Hex	EFDDDD
RGB	239, 221, 221
RGB Percent	94%, 87%, 87%
CMY	0.0627, 0.1333, 0.1333
CMYK	0.00, 0.08, 0.08, 0.06
HSL	0°, 36%, 90%
HSV	0°, 8%, 94%
XYZ	74.5042, 75.2841, 79.0111
YIQ	226.3820, 10.7280, 3.8160

Conversions

Conversions Part 2

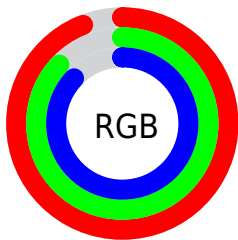
Format	Color
R_{YB}	239, 221, 221
Decimal	15719901
CIE Lab	89.53, 6.16, 2.22
CIE LCh	90, 6.549, 19.801
Yxy	75.2874, 0.3256, 0.3290
Android (android.graphics.Color)	4293909981 (0xFFEFDDDD)
YUV	226.3820, -2.6533, 11.0660
Hunter-Lab	86.7664, 1.4324, 6.7459

Details

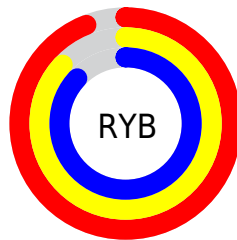
The HunterLab color $86.7664, 1.4324, 6.7459$ is a light color, and the websafe version is hex `CCCCCC`. A complement of this color would be $91.2884, -10.6305, 3.0274$, and the grayscale version is $87.3842, -4.6626, 4.7477$.

A 20% lighter version of the original color is $100.0000, -5.3358, 5.4332$, and $63.3189, 2.0885, 5.2725$ is the 20% darker color. If you saturate the color by 10%, you get $78.9745, 10.2418, 9.1402$, and if you desaturate by 10%, it is $94.9642, -7.0075, 4.5085$.

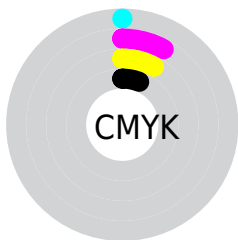
Distribution



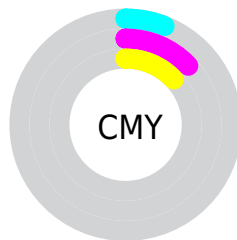
- Red (94%)
- Green (87%)
- Blue (87%)



- Red (94%)
- Yellow (87%)
- Blue (87%)



- Cyan (0%)
- Magenta (8%)
- Yellow (8%)
- Black (6%)



- Cyan (6%)
- Magenta (13%)
- Yellow (13%)

Brightness & Saturation Gradients

These gradients show how the HunterLab color 86.7664, 1.4324, 6.7459 changes by changing the brightness by 10 percent. The first figure shows a shift by +10% for each color and the second figure -10%.

Similar to the brightness gradients but the following saturation gradients show a change of the HunterLab color 86.7664, 1.4324, 6.7459 by changing the saturation by 10% instead.

86.7664, 1.4324,
6.7459

86.7664, 1.4324,
6.7459

218.8389, -3.4847,
14.6830

74.7318, 1.7866,
5.9914

112.5696, 0.5875,
8.3396

63.3098, 2.0954,
5.2633

126.2856, 0.1071,
9.1743

52.5376, 2.3520,
4.5640

140.5175, -0.4099,
10.0339

42.4569, 2.5506,
3.8943

155.2471, -0.9615,
10.9177

33.1188, 2.6838,
3.2550

170.4582, -1.5462,
11.8250

24.5880, 2.7413,
2.6467

186.1361, -2.1624,

16.9496, 2.7078,

12.7554

2.0690

202.2671, -2.8089,
13.7082

■ 10.3234, 2.5592,
1.5198

0.0000, INF, NaN

■ 86.7664, 1.4324,
6.7459

■ 86.7664, 1.4324,
6.7459

■ 78.9745, 10.2418,
9.1402

■ 94.9642, -7.0075,
4.5085

■ 71.6562, 19.4431,
11.6977

■ 98.5347, -10.4711,
3.6063

■ 64.9056, 28.9948,
14.4131

■ 58.8367, 38.7523,
17.2461

■ 53.5831, 48.3955,
20.0989

■ 49.2877, 57.3667,
22.7947

■ 46.0749, 64.8930,
25.0834

■ 44.0052, 70.1925,
26.7076

■ 43.0036, 72.9026,
27.5413

Harmonies

Analogous

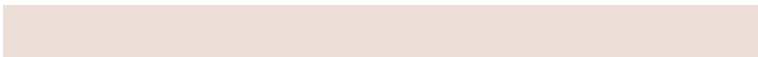
The Analogous color harmony consists of three colors that are next to each other on the color wheel.



86.7683, 1.7132, 3.6451



86.7664, 1.4324, 6.7459



86.7683, -0.4917, 9.2175

Triad

The Triadic color harmony groups three colors that are evenly spaced from another and form a triangle on the color wheel.



86.7683, 1.4301, 6.7473



86.7683, -9.4382, 8.5374



86.7683, -5.7575, -1.4439

Complementary

The Complementary color scheme is a pair of colors which are on the opposite of each other on the color wheel.



86.7664, 1.4324, 6.7459



91.2884, -10.6305, 3.0274

Split Complementary

Split-complementary colors differ from the complementary color scheme. The scheme consists of three colors, the original color and two neighbors of the complement color.



86.7683, -8.7007, -0.0255



86.7664, 1.4324, 6.7459



86.7683, -10.8046, 5.7873

Square

The Square scheme is like the rectangle color scheme, but the four colors are evenly spaced on the color wheel.



86.7683, 1.4301, 6.7473



86.7683, -6.7780, 10.2239



86.7683, -10.5367, 2.6488



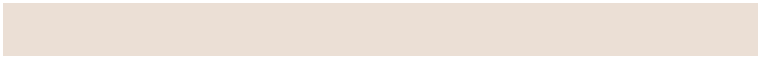
86.7683, -2.4697, -1.1634

Rectangle

The Rectangle color scheme consists of four colors that form a rectangle on the color wheel.



86.7664, 1.4324, 6.7459



86.7683, -2.4278, 10.2105



86.7683, -10.5367, 2.6488



86.7683, -6.8191, -1.1480

Sweetspot

The Sweet Spot groups the original color and five complimentary colors.



86.7683, 1.4301, 6.7473



98.2169, -3.5251, 5.9119



87.3480, 4.5639, -1.5273



45.4804, -1.6726, 2.7241

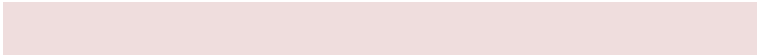
0.0000, NaN, NaN



46.2646, -2.4686, 2.5136

Same Dimension

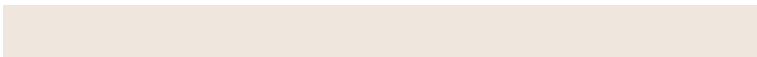
The Same Dimension uses a secret algorithm to generate beautiful new colors.



86.7683, 1.4301, 6.7473



92.1050, 2.9356, 7.6379



89.5354, -3.2864, 9.8144



39.6982, 1.4511, 3.3543



31.8464, 54.5305, 20.5783



9.1865, 15.7243, 5.9360

Inverse Universe

The Inverse Universe completely reimagines the original color for something new.



91.2884, -10.6305, 3.0274



97.9290, -12.6082, 2.8434



88.4301, -5.9929, -0.3670



42.3419, -5.6056, 1.1777



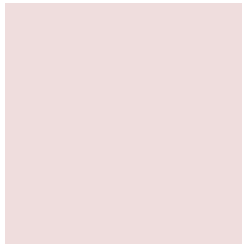
61.2711, -32.4736, -6.4823



17.6729, -9.3670, -1.8689

Previews

White Background



This preview shows how the HunterLab color 86.7664, 1.4324, 6.7459 looks on a white background.

Color Contrast Check

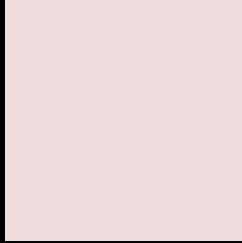
Large Text (above 18pt) WCAG AA × Fail

Any Text WCAG AA × Fail

Large Text (above 18pt) WCAG AAA × Fail

Any Text WCAG AAA × Fail

Black Background



This preview shows how the HunterLab color 86.7664, 1.4324, 6.7459 looks on a black background.

Color Contrast Check

Large Text (above 18pt) WCAG AA ✓ Pass

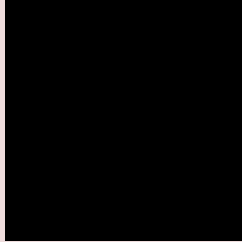
Any Text WCAG AA ✓ Pass

Large Text (above 18pt) WCAG AAA ✓ Pass

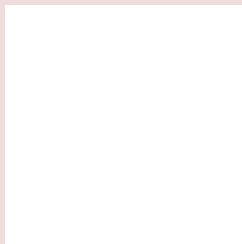
Any Text WCAG AAA ✓ Pass

If you want to check with other color combinations, try the [Color Contrast Checker](#).

HunterLab 86.7664, 1.4324, 6.7459 Background



This preview shows how black text looks on a background with the HunterLab color 86.7664, 1.4324, 6.7459.



This preview shows how white text looks on a background with the HunterLab color 86.7664, 1.4324,

6.7459.

Color Blindness Simulation

Color vision deficiency is a very complex topic, and I could not describe the different causes any better than Wikipedia does, so if you want to learn more, you should check out their [article about color blindness](#).

Dichromacy



Original Color

86.7664, 1.4324, 6.7459

Protanopia

86.7739, -3.1526, 5.7140

Deuteranopia

86.8177, 6.3168, 6.4122



Tritanopia

86.8447, 5.7682, -0.5637

Trichromacy



Original Color

86.7664, 1.4324, 6.7459

Protanomaly

86.8176, -1.4768, 6.2756

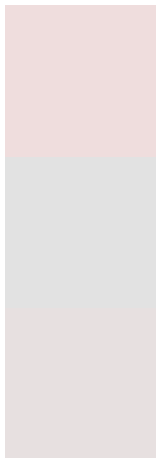
Deuteranomaly

86.8041, 4.7307, 6.3686

Tritanomaly

86.8799, 4.0085, 2.0121

Monochromacy



Original Color

86.7664, 1.4324, 6.7459

Achromatopsia

87.2081, -4.6532, 4.7382

Achromatomaly

86.9954, -2.3245, 5.5033

CSS Examples

Text

The CSS property to change the color of the text to HunterLab 86.7664, 1.4324, 6.7459 is called "color". The color property can be set on classes, ids or directly on the HTML element.

This example shows how text in the color `rgb(239, 221, 221)` looks like.

```
.text, #text, p{  
    color:rgb(239, 221, 221)  
}
```

If you want to add a text shadow in that color use the text-shadow property, you can generate a text shadow directly with our [CSS Text Shadow Generator](#).

Here you see how black text with a 4 pixel rgb(239, 221, 221) colored shadow looks like.

```
.shadow{ text-shadow: 4px 4px 2px rgb(239, 221, 221) }
```

Border

The CSS property to change the border of an element to HunterLab 86.7664, 1.4324, 6.7459 is called "border".

The border property can be set on classes, ids or directly on the HTML element.

This example shows the color as border, it can be applied via the CSS property "border" or "border-color".

```
.border, #border, table{ border:4px solid rgb(239, 221, 221) }
```


If only the border color should be changed use the property `border-color`.

```
.border{ border-color:rgb(239, 221, 221) }
```

If you want to add a box shadow in that color use:

Here you see how a box with a 4 pixel `rgb(239, 221, 221)` colored shadow looks like.

```
.boxshadow{ -moz-box-shadow:4px 4px 4px  
4px rgb(239, 221, 221); -webkit-box-  
shadow:4px 4px 4px 4px rgb(239, 221, 221);  
box-shadow:4px 4px 4px 4px rgb(239, 221,  
221) }
```

Background

The CSS property to change the background color of an element to HunterLab 86.7664, 1.4324, 6.7459 is called "background". The background property can be set on classes, ids or directly on the HTML element.

```
.background, #background, body{  
background: rgb(239, 221, 221) }
```

If only the background color should be changed can be used:

```
.background{ background-color: rgb(239,  
221, 221) }
```

This example shows the color as background, it is applied via the CSS property "background".

To optimize and compress your CSS code, you can use our [online CSS compressor and optimizer](#) based on csstidy. If you want to create a linear or radial gradient as background or border, check our [CSS Gradient Generator](#).

Hey! You found this booklet interesting? Support Converting Colors with the new Membership Option!

The pro membership hides all ads, plus gives you double the colors in the color bucket, and more awesome pro features!

[Learn more, Memberships starting at \\$2.50/m!](#)

**Follow me
on Twitter!**

@ConvertingColor