

Converting Colors

HunterLab(87.1163, 1.0467,
8.3028)

Have a look what the booklet for
HunterLab(87.1163, 1.0467, 8.3028)
contains.

HunterLab(87.1104, 0.9185, 8.0788)	3
<i>Conversions</i>	4
<i>Details</i>	6
<i>Harmonies</i>	12
<i>Previews</i>	24
<i>Color Blindness Simulation</i>	28
<i>CSS Examples</i>	31

Color

**HunterLab(87.1104, 0.9185,
8.0788)**

Conversions

Conversions Part 1

Format	Color
Hex	F0DEDB
RGB	240, 222, 219
RGB Percent	94%, 87%, 86%
CMY	0.0588, 0.1294, 0.1412
CMYK	0.00, 0.07, 0.09, 0.06
HSL	9°, 41%, 90%
HSV	9°, 9%, 94%
XYZ	74.8426, 75.8822, 77.7198
YIQ	227.0400, 11.6910, 2.8830

Conversions

Conversions Part 2

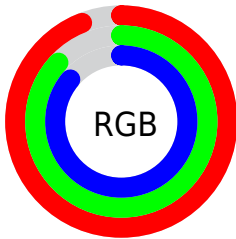
Format	Color
R _Y B	240, 223, 219
Decimal	15785691
CIE Lab	89.81, 5.66, 3.68
CIE LCh	90, 6.751, 33.068
Yxy	75.8856, 0.3276, 0.3322
Android (android.graphics.Color)	4293975771 (0xFFFF0DEDB)
YUV	227.0400, -3.9637, 11.3659
Hunter-Lab	87.1104, 0.9185, 8.0788

Details

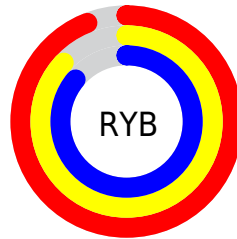
The HunterLab color $87.1104, 0.9185, 8.0788$ is a light color, and the websafe version is hex $CCCCCC$. A complement of this color would be $90.5086, -10.0315, 1.5917$, and the grayscale version is $87.6764, -4.6782, 4.7636$.

A 20% lighter version of the original color is $100.0000, -5.3358, 5.4332$, and $63.6460, 1.6067, 6.5283$ is the 20% darker color. If you saturate the color by 10%, you get $80.2770, 7.9933, 11.4736$, and if you desaturate by 10%, it is $94.2561, -5.8024, 4.6397$.

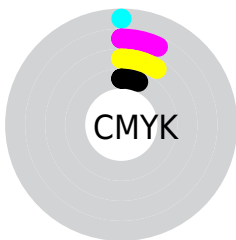
Distribution



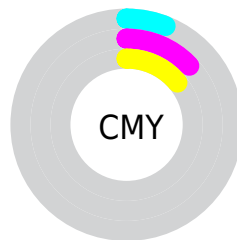
- Red (94%)
- Green (87%)
- Blue (86%)



- Red (94%)
- Yellow (87%)
- Blue (86%)



- Cyan (0%)
- Magenta (7%)
- Yellow (9%)
- Black (6%)



- Cyan (6%)
- Magenta (13%)
- Yellow (14%)

Brightness & Saturation Gradients

These gradients show how the HunterLab color 87.1104, 0.9185, 8.0788 changes by changing the brightness by 10 percent. The first figure shows a shift by +10% for each color and the second figure -10%.

Similar to the brightness gradients but the following saturation gradients show a change of the HunterLab color 87.1104, 0.9185, 8.0788 by changing the saturation by 10% instead.

87.1104, 0.9185,
8.0788

87.1104, 0.9185,
8.0788

219.3071, -4.1806,
16.5216

75.0591, 1.2970,
7.2557

112.9447, 0.0280,
9.8000

63.6196, 1.6315,
6.4552

126.6754, -0.4739,
10.6945

52.8287, 1.9152,
5.6787

140.9214, -1.0116,
11.6116

42.7280, 2.1427,
4.9262

155.6647, -1.5832,
12.5509

33.3685, 2.3071,
4.1970

170.8890, -2.1872,
13.5119

24.8141, 2.3984,
3.4893

186.5796, -2.8222,

17.1494, 2.4025,

14.4943

2.7994

202.7231, -3.4871,
15.4976

■ 10.4930, 2.2965,
2.1212

0.0000, INF, NaN

■ 87.1104, 0.9185,
8.0788

■ 87.1104, 0.9185,
8.0788

■ 80.2770, 7.9933,
11.4736

■ 94.2561, -5.8024,
4.6397

■ 73.7981, 15.4571,
14.7904

■ 98.6232, -10.1586,
3.7174

■ 67.7347, 23.3110,
17.9832

■ 62.1575, 31.5109,
20.9781

■ 57.1499, 39.9304,
23.6679

■ 52.8040, 48.3205,
25.9091

■ 49.2126, 56.2795,
27.5365

■ 46.4519, 63.2709,
28.4076

■ 44.5526, 68.7135,
28.5414

Harmonies

Analogous

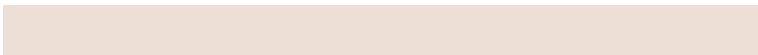
The Analogous color harmony consists of three colors that are next to each other on the color wheel.



87.1123, 1.9987, 5.0753



87.1104, 0.9185, 8.0788



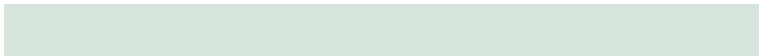
87.1123, -1.6600, 10.1266

Triad

The Triadic color harmony groups three colors that are evenly spaced from another and form a triangle on the color wheel.



87.1123, 0.9161, 8.0802



87.1123, -10.4275, 7.5226



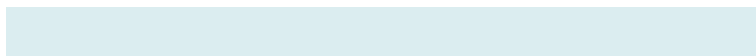
87.1123, -4.3012, -1.7262

Complementary

The Complementary color scheme is a pair of colors which are on the opposite of each other on the color wheel.



87.1104, 0.9185, 8.0788



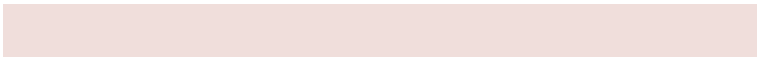
90.5086, -10.0315, 1.5917

Split Complementary

Split-complementary colors differ from the complementary color scheme. The scheme consists of three colors, the original color and two neighbors of the complement color.



87.1123, -7.6057, -1.0104



87.1104, 0.9185, 8.0788



87.1123, -11.1104, 4.4069

Square

The Square scheme is like the rectangle color scheme, but the four colors are evenly spaced on the color wheel.



87.1123, 0.9161, 8.0802



87.1123, -8.2052, 9.8135



87.1123, -10.0852, 1.2657



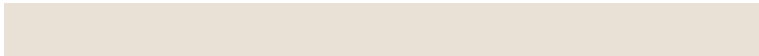
87.1123, -1.0425, -0.6545

Rectangle

The Rectangle color scheme consists of four colors that form a rectangle on the color wheel.



87.1104, 0.9185, 8.0788



87.1123, -3.8592, 10.7149



87.1123, -10.0852, 1.2657



87.1123, -5.4435, -1.6868

Sweetspot

The Sweet Spot groups the original color and five complimentary colors.



87.1123, 0.9161, 8.0802



97.6757, -3.1944, 6.5452



86.7845, 5.6445, -1.2678



44.9040, -1.2105, 3.1653

0.0000, NaN, NaN



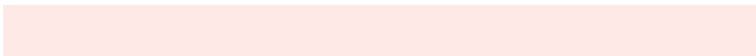
46.2646, -2.4686, 2.5136

Same Dimension

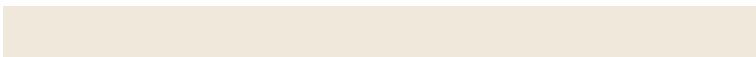
The Same Dimension uses a secret algorithm to generate beautiful new colors.



87.1123, 0.9161, 8.0802



92.3617, 1.9317, 9.1257



90.2901, -4.4700, 11.5494



40.1541, 0.6571, 3.8614



33.0025, 50.6723, 21.2231



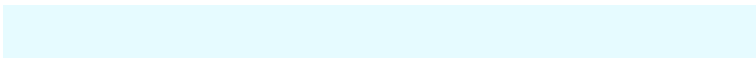
10.0889, 12.8394, 6.4415

Inverse Universe

The Inverse Universe completely reimagines the original color for something new.



90.5086, -10.0315, 1.5917



96.5271, -11.4980, 1.1672



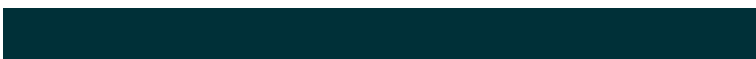
87.2505, -4.7140, -2.3395



41.8580, -4.8357, 0.6061



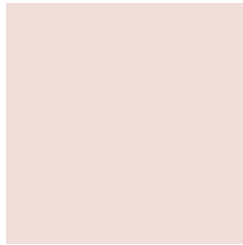
52.6033, -21.7345, -18.8310



15.5129, -6.7089, -4.9071

Previews

White Background



This preview shows how the HunterLab color 87.1104, 0.9185, 8.0788 looks on a white background.

Color Contrast Check

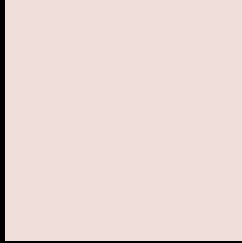
Large Text (above 18pt) WCAG AA × Fail

Any Text WCAG AA × Fail

Large Text (above 18pt) WCAG AAA × Fail

Any Text WCAG AAA × Fail

Black Background



This preview shows how the HunterLab color 87.1104, 0.9185, 8.0788 looks on a black background.

Color Contrast Check

Large Text (above 18pt) WCAG AA ✓ Pass

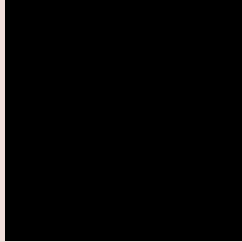
Any Text WCAG AA ✓ Pass

Large Text (above 18pt) WCAG AAA ✓ Pass

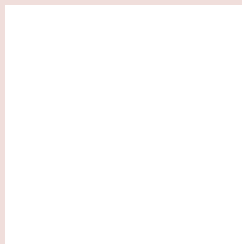
Any Text WCAG AAA ✓ Pass

If you want to check with other color combinations, try the [Color Contrast Checker](#).

HunterLab 87.1104, 0.9185, 8.0788 Background



This preview shows how black text looks on a background with the HunterLab color 87.1104, 0.9185, 8.0788.



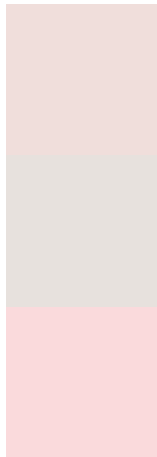
This preview shows how white text looks on a background with the HunterLab color 87.1104, 0.9185,

8.0788.

Color Blindness Simulation

Color vision deficiency is a very complex topic, and I could not describe the different causes any better than Wikipedia does, so if you want to learn more, you should check out their [article about color blindness](#).

Dichromacy



Original Color

87.1104, 0.9185, 8.0788

Protanopia

87.2123, -3.3507, 7.1759

Deuteranopia

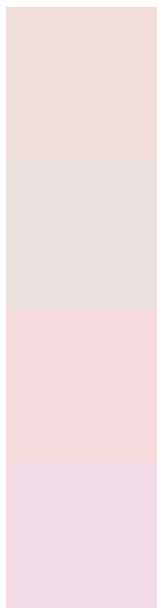
86.9679, 6.6971, 7.5453



Tritanopia

86.9797, 6.2885, -0.9080

Trichromacy



Original Color

87.1104, 0.9185, 8.0788

Protanomaly

87.1614, -1.9984, 7.6148

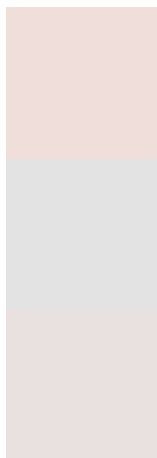
Deuteranomaly

86.8465, 4.7510, 7.3720

Tritanomaly

86.9485, 4.1752, 2.6014

Monochromacy



Original Color

87.1104, 0.9185, 8.0788

Achromatopsia

87.6442, -4.6765, 4.7619

Achromatomaly

87.4003, -2.5157, 5.9720

CSS Examples

Text

The CSS property to change the color of the text to HunterLab 87.1104, 0.9185, 8.0788 is called "color". The color property can be set on classes, ids or directly on the HTML element.

This example shows how text in the color `rgb(240, 222, 219)` looks like.

```
.text, #text, p{  
    color:rgb(240, 222, 219)  
}
```

If you want to add a text shadow in that color use the text-shadow property, you can generate a text shadow directly with our [CSS Text Shadow Generator](#).

Here you see how black text with a 4 pixel rgb(240, 222, 219) colored shadow looks like.

```
.shadow{ text-shadow: 4px 4px 2px rgb(240, 222, 219) }
```

Border

The CSS property to change the border of an element to HunterLab 87.1104, 0.9185, 8.0788 is called "border". The border property can be set on classes, ids or directly on the HTML element.

This example shows the color as border, it can be applied via the CSS property "border" or "border-color".

```
.border, #border, table{ border:4px solid rgb(240, 222, 219) }
```


If only the border color should be changed use the property `border-color`.

```
.border{ border-color:rgb(240, 222, 219) }
```

If you want to add a box shadow in that color use:

Here you see how a box with a 4 pixel `rgb(240, 222, 219)` colored shadow looks like.

```
.boxshadow{ -moz-box-shadow:4px 4px 4px  
4px rgb(240, 222, 219); -webkit-box-  
shadow:4px 4px 4px 4px rgb(240, 222, 219);  
box-shadow:4px 4px 4px 4px rgb(240, 222,  
219) }
```

Background

The CSS property to change the background color of an element to HunterLab 87.1104, 0.9185, 8.0788 is called "background". The background property can be set on classes, ids or directly on the HTML element.

```
.background, #background, body{  
background: rgb(240, 222, 219) }
```

If only the background color should be changed can be used:

```
.background{ background-color: rgb(240,  
222, 219) }
```

This example shows the color as background, it is applied via the CSS property "background".

To optimize and compress your CSS code, you can use our [online CSS compressor and optimizer](#) based on csstidy. If you want to create a linear or radial gradient as background or border, check our [CSS Gradient Generator](#).

Hey! You found this booklet interesting? Support Converting Colors with the new Membership Option!

The pro membership hides all ads, plus gives you double the colors in the color bucket, and more awesome pro features!

[Learn more, Memberships starting at \\$2.50/m!](#)

**Follow me
on Twitter!**

@ConvertingColor