

Converting Colors

HunterLab(87.1215, 0.1700,
6.9096)

Have a look what the booklet for
HunterLab(87.1215, 0.1700, 6.9096)
contains.

HunterLab(87.2771, 0.0396, 7.3098)	3
<i>Conversions</i>	4
<i>Details</i>	6
<i>Harmonies</i>	12
<i>Previews</i>	24
<i>Color Blindness Simulation</i>	28
<i>CSS Examples</i>	31

Color

**HunterLab(87.2771, 0.0396,
7.3098)**

Conversions

Conversions Part 1

Format	Color
Hex	EEDFDD
RGB	238, 223, 221
RGB Percent	93%, 87%, 87%
CMY	0.0667, 0.1255, 0.1333
CMYK	0.00, 0.06, 0.07, 0.07
HSL	7°, 33%, 90%
HSV	7°, 7%, 93%
XYZ	74.6987, 76.1729, 79.1723
YIQ	227.2570, 9.5820, 2.5580

Conversions

Conversions Part 2

Format	Color
R _Y B	238, 223, 221
Decimal	15654877
CIE Lab	89.94, 4.78, 2.81
CIE LCh	90, 5.545, 30.447
Yxy	76.1763, 0.3247, 0.3311
Android (android.graphics.Color)	4293844957 (0xFFEEDFDD)
YUV	227.2570, -3.0847, 9.4216
Hunter-Lab	87.2771, 0.0396, 7.3098

Details

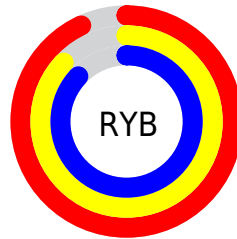
The HunterLab color $87.2771, 0.0396, 7.3098$ is a light color, and the websafe version is hex `CCCCCC`. A complement of this color would be $90.2966, -9.2700, 2.3646$, and the grayscale version is $87.7681, -4.6831, 4.7686$.

A 20% lighter version of the original color is $100.0000, -5.3358, 5.4332$, and $63.7993, 0.7598, 5.7996$ is the 20% darker color. If you saturate the color by 10%, you get $80.2896, 7.3019, 10.5051$, and if you desaturate by 10%, it is $94.5828, -6.8750, 4.1088$.

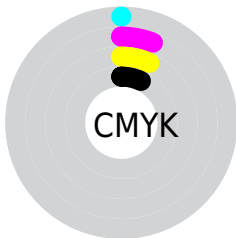
Distribution



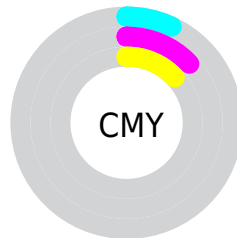
- Red (93%)
- Green (87%)
- Blue (87%)



- Red (93%)
- Yellow (87%)
- Blue (87%)



- Cyan (0%)
- Magenta (6%)
- Yellow (7%)
- Black (7%)



- Cyan (7%)
- Magenta (13%)
- Yellow (13%)

Brightness & Saturation Gradients

These gradients show how the HunterLab color 87.2771, 0.0396, 7.3098 changes by changing the brightness by 10 percent. The first figure shows a shift by +10% for each color and the second figure -10%.

Similar to the brightness gradients but the following saturation gradients show a change of the HunterLab color 87.2771, 0.0396, 7.3098 by changing the saturation by 10% instead.

87.2771, 0.0396,
7.3098

87.2771, 0.0396,
7.3098

219.5338, -5.3657,
15.4566

75.2177, 0.4591,
6.5269

113.1265, -0.9274,
8.9562

63.7697, 0.8365,
5.7689

126.8642, -1.4654,
9.8158

52.9698, 1.1656,
5.0378

141.1171, -2.0378,
10.6992

42.8595, 1.4415,
4.3341

155.8669, -2.6431,
11.6060

33.4896, 1.6578,
3.6579

171.0976, -3.2797,
12.5357

24.9239, 1.8055,
3.0089

186.7945, -3.9465,

17.2465, 1.8718,

13.4876

2.3856

202.9440, -4.6421,
14.4614

■ 10.5754, 1.8360,
1.7832

0.0000, INF, NaN

■ 87.2771, 0.0396,
7.3098

■ 87.2771, 0.0396,
7.3098

■ 80.2896, 7.3019,
10.5051

■ 94.5828, -6.8750,
4.1088

■ 73.6646, 14.9475,
13.6690

■ 98.4466, -10.7824,
3.4956

■ 67.4656, 22.9771,
16.7645

■ 61.7674, 31.3438,
19.7271

■ 56.6584, 39.9128,
22.4569

■ 52.2371, 48.4170,
24.8121

■ 48.6032, 56.4247,
26.6191

■ 45.8383, 63.3634,
27.7134

■ 43.9768, 68.6403,
28.0367

Harmonies

Analogous

The Analogous color harmony consists of three colors that are next to each other on the color wheel.



87.2790, 0.7979, 4.7909



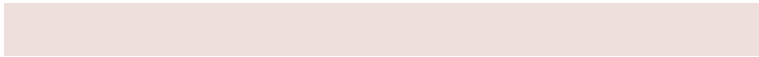
87.2771, 0.0396, 7.3098



87.2790, -1.9853, 9.0976

Triad

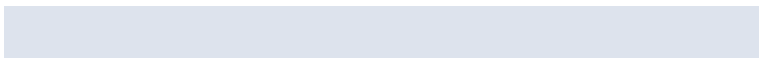
The Triadic color harmony groups three colors that are evenly spaced from another and form a triangle on the color wheel.



87.2790, 0.0373, 7.3112



87.2790, -9.3045, 7.2439



87.2790, -4.6196, -0.5374

Complementary

The Complementary color scheme is a pair of colors which are on the opposite of each other on the color wheel.



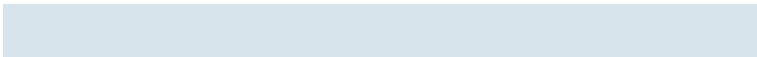
87.2771, 0.0396, 7.3098



90.2966, -9.2700, 2.3646

Split Complementary

Split-complementary colors differ from the complementary color scheme. The scheme consists of three colors, the original color and two neighbors of the complement color.



87.2790, -7.3062, 0.1684



87.2771, 0.0396, 7.3098



87.2790, -9.9902, 4.7108

Square

The Square scheme is like the rectangle color scheme, but the four colors are evenly spaced on the color wheel.



87.2790, 0.0373, 7.3112



87.2790, -7.3782, 9.0596



87.2790, -9.2633, 2.1105



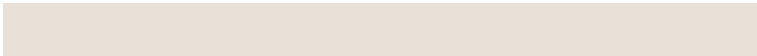
87.2790, -1.9115, 0.2106

Rectangle

The Rectangle color scheme consists of four colors that form a rectangle on the color wheel.



87.2771, 0.0396, 7.3098



87.2790, -3.7647, 9.6608



87.2790, -9.2633, 2.1105



87.2790, -5.5550, -0.4621

Sweetspot

The Sweet Spot groups the original color and five complimentary colors.



87.2790, 0.0373, 7.3112



98.4068, -3.8436, 6.1286



87.1483, 3.6890, -0.2336



45.5639, -1.8126, 2.8194

0.0000, NaN, NaN



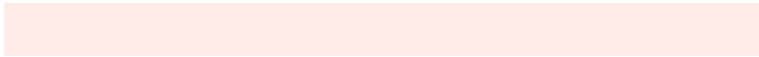
46.2646, -2.4686, 2.5136

Same Dimension

The Same Dimension uses a secret algorithm to generate beautiful new colors.



87.2790, 0.0373, 7.3112



92.9333, 1.4954, 8.5612



89.9007, -4.3945, 10.2043



40.0735, 0.7968, 3.7721



32.7130, 51.6196, 21.0613



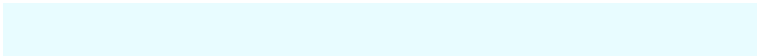
9.9359, 13.3017, 6.3553

Inverse Universe

The Inverse Universe completely reimagines the original color for something new.



90.2966, -9.2700, 2.3646



97.0515, -11.2106, 1.8094



87.6171, -4.8879, -0.8341



41.9430, -4.9716, 0.7070



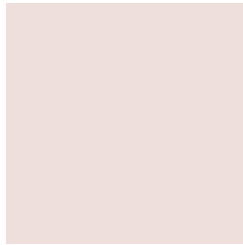
54.1004, -23.6651, -16.5346



15.8871, -7.1852, -4.3468

Previews

White Background



This preview shows how the HunterLab color 87.2771, 0.0396, 7.3098 looks on a white background.

Color Contrast Check

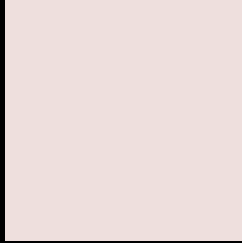
Large Text (above 18pt) WCAG AA × Fail

Any Text WCAG AA × Fail

Large Text (above 18pt) WCAG AAA × Fail

Any Text WCAG AAA × Fail

Black Background



This preview shows how the HunterLab color 87.2771, 0.0396, 7.3098 looks on a black background.

Color Contrast Check

Large Text (above 18pt) WCAG AA ✓ Pass

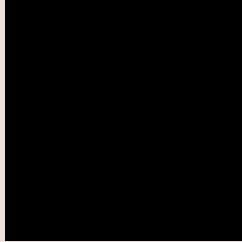
Any Text WCAG AA ✓ Pass

Large Text (above 18pt) WCAG AAA ✓ Pass

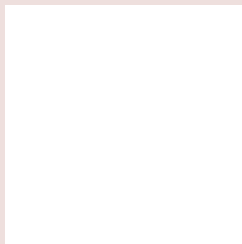
Any Text WCAG AAA ✓ Pass

If you want to check with other color combinations, try the [Color Contrast Checker](#).

HunterLab 87.2771, 0.0396, 7.3098 Background



This preview shows how black text looks on a background with the HunterLab color 87.2771, 0.0396, 7.3098.



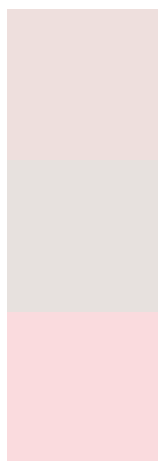
This preview shows how white text looks on a background with the HunterLab color 87.2771, 0.0396,

7.3098.

Color Blindness Simulation

Color vision deficiency is a very complex topic, and I could not describe the different causes any better than Wikipedia does, so if you want to learn more, you should check out their [article about color blindness](#).

Dichromacy



Original Color

87.2771, 0.0396, 7.3098

Protanopia

87.2429, -3.1833, 6.7379

Deuteranopia

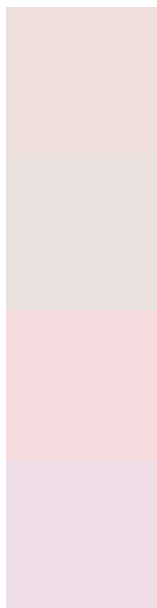
87.3275, 6.4899, 7.0049



Tritanopia

87.1118, 5.2543, -1.2847

Trichromacy



Original Color

87.2771, 0.0396, 7.3098

Protanomaly

87.2225, -1.6654, 6.7409

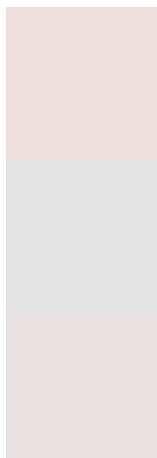
Deuteranomaly

87.2085, 4.5483, 6.8335

Tritanomaly

87.1148, 3.3128, 1.7783

Monochromacy



Original Color

87.2771, 0.0396, 7.3098

Achromatopsia

87.6442, -4.6765, 4.7619

Achromatomaly

87.6458, -3.1968, 5.7630

CSS Examples

Text

The CSS property to change the color of the text to HunterLab 87.2771, 0.0396, 7.3098 is called "color". The color property can be set on classes, ids or directly on the HTML element.

This example shows how text in the color `rgb(238, 223, 221)` looks like.

```
.text, #text, p{  
    color:rgb(238, 223, 221)  
}
```

If you want to add a text shadow in that color use the text-shadow property, you can generate a text shadow directly with our [CSS Text Shadow Generator](#).

Here you see how black text with a 4 pixel rgb(238, 223, 221) colored shadow looks like.

```
.shadow{ text-shadow: 4px 4px 2px rgb(238, 223, 221) }
```

Border

The CSS property to change the border of an element to HunterLab 87.2771, 0.0396, 7.3098 is called "border".

The border property can be set on classes, ids or directly on the HTML element.

This example shows the color as border, it can be applied via the CSS property "border" or "border-color".

```
.border, #border, table{ border:4px solid rgb(238, 223, 221) }
```


If only the border color should be changed use the property `border-color`.

```
.border{ border-color:rgb(238, 223, 221) }
```

If you want to add a box shadow in that color use:

Here you see how a box with a 4 pixel `rgb(238, 223, 221)` colored shadow looks like.

```
.boxshadow{ -moz-box-shadow:4px 4px 4px  
4px rgb(238, 223, 221); -webkit-box-  
shadow:4px 4px 4px 4px rgb(238, 223, 221);  
box-shadow:4px 4px 4px 4px rgb(238, 223,  
221) }
```

Background

The CSS property to change the background color of an element to HunterLab 87.2771, 0.0396, 7.3098 is called "background". The background property can be set on classes, ids or directly on the HTML element.

```
.background, #background, body{  
background: rgb(238, 223, 221) }
```

If only the background color should be changed can be used:

```
.background{ background-color: rgb(238,  
223, 221) }
```

This example shows the color as background, it is applied via the CSS property "background".

To optimize and compress your CSS code, you can use our [online CSS compressor and optimizer](#) based on csstidy. If you want to create a linear or radial gradient as background or border, check our [CSS Gradient Generator](#).

Hey! You found this booklet interesting? Support Converting Colors with the new Membership Option!

The pro membership hides all ads, plus gives you double the colors in the color bucket, and more awesome pro features!

[Learn more, Memberships starting at \\$2.50/m!](#)

**Follow me
on Twitter!**

@ConvertingColor