

Converting Colors

HunterLab(87.6409, -0.5819,
7.7150)

Have a look what the booklet for
HunterLab(87.6409, -0.5819, 7.7150)
contains.

HunterLab(87.5836, -0.4853, 7.6521)	3
<i>Conversions</i>	4
<i>Details</i>	6
<i>Harmonies</i>	12
<i>Previews</i>	24
<i>Color Blindness Simulation</i>	28
<i>CSS Examples</i>	31

Color

**HunterLab(87.5836, -0.4853,
7.6521)**

Conversions

Conversions Part 1

Format	Color
Hex	EEE0DD
RGB	238, 224, 221
RGB Percent	93%, 88%, 87%
CMY	0.0667, 0.1215, 0.1333
CMYK	0.00, 0.06, 0.07, 0.07
HSL	11°, 33%, 90%
HSV	11°, 7%, 93%
XYZ	74.9667, 76.7089, 79.2616
YIQ	227.8440, 9.3070, 2.0350

Conversions

Conversions Part 2

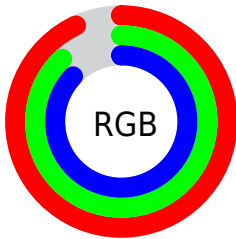
Format	Color
R _Y B	238, 225, 221
Decimal	15655133
CIE Lab	90.19, 4.26, 3.17
CIE LCh	90, 5.312, 36.633
Yxy	76.7122, 0.3246, 0.3322
Android (android.graphics.Color)	4293845213 (0xFFEEE0DD)
YUV	227.8440, -3.3741, 8.9068
Hunter-Lab	87.5836, -0.4853, 7.6521

Details

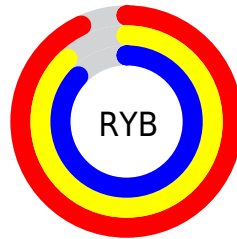
The HunterLab color $87.5836, -0.4853, 7.6521$ is a light color, and the websafe version is hex `CCCCCC`. A complement of this color would be $89.9780, -8.7555, 1.9893$, and the grayscale version is $88.0257, -4.6968, 4.7826$.

A 20% lighter version of the original color is $100.0000, -5.3358, 5.4332$, and $64.0891, 0.2604, 6.1211$ is the 20% darker color. If you saturate the color by 10%, you get $80.9935, 6.0366, 11.2564$, and if you desaturate by 10%, it is $94.4556, -6.6660, 3.9612$.

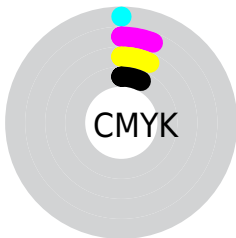
Distribution



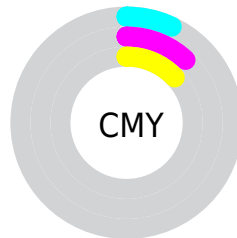
- Red (93%)
- Green (88%)
- Blue (87%)



- Red (93%)
- Yellow (88%)
- Blue (87%)



- Cyan (0%)
- Magenta (6%)
- Yellow (7%)
- Black (7%)



- Cyan (7%)
- Magenta (12%)
- Yellow (13%)

Brightness & Saturation Gradients

These gradients show how the HunterLab color 87.5836, -0.4853, 7.6521 changes by changing the brightness by 10 percent. The first figure shows a shift by +10% for each color and the second figure -10%.

Similar to the brightness gradients but the following saturation gradients show a change of the HunterLab color 87.5836, -0.4853, 7.6521 by changing the saturation by 10% instead.

87.5836, -0.4853,
7.6521

87.5836, -0.4853,
7.6521

219.9505, -6.0762,
15.9267

75.5094, -0.0410,
6.8519

113.4606, -1.4988,
9.3307

64.0458, 0.3626,
6.0757

127.2114, -2.0586,
10.2053

53.2294, 0.7194,
5.3253

141.4767, -2.6522,
11.1033

43.1014, 1.0248,
4.6007

156.2387, -3.2779,
12.0241

33.7124, 1.2728,
3.9020

171.4812, -3.9343,
12.9673

25.1259, 1.4551,
3.2283

187.1894, -4.6202,

17.4252, 1.5598,

13.9324

2.5772

203.3499, -5.3345,
14.9190

■ 10.7273, 1.5676,
1.9423

■ 1.4465, 12.7639,
1.0125

■ 87.5836, -0.4853,
7.6521

■ 87.5836, -0.4853,
7.6521

■ 80.9935, 6.0366,
11.2564

■ 94.4556, -6.6660,
3.9612

■ 74.7205, 12.9381,
14.7364

■ 98.4466, -10.7824,
3.4956

■ 68.8167, 20.2316,
18.0439

■ 63.3420, 27.8977,
21.1065

■ 58.3672, 35.8565,
23.8240

■ 53.9717, 43.9339,
26.0668

■ 50.2385, 51.8292,
27.6868

■ 47.2425, 59.1075,
28.5529

■ 45.0314, 65.2453,
28.6333

Harmonies

Analogous

The Analogous color harmony consists of three colors that are next to each other on the color wheel.



87.5855, 0.5203, 5.3341



87.5836, -0.4853, 7.6521



87.5855, -2.6166, 9.1660

Triad

The Triadic color harmony groups three colors that are evenly spaced from another and form a triangle on the color wheel.



87.5855, -0.4876, 7.6535



87.5855, -9.3768, 6.6971



87.5855, -4.0797, -0.2632

Complementary

The Complementary color scheme is a pair of colors which are on the opposite of each other on the color wheel.



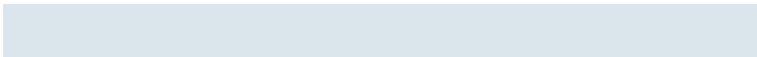
87.5836, -0.4853, 7.6521



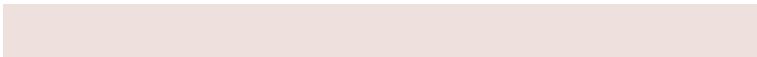
89.9780, -8.7555, 1.9893

Split Complementary

Split-complementary colors differ from the complementary color scheme. The scheme consists of three colors, the original color and two neighbors of the complement color.



87.5855, -6.7205, 0.1284



87.5836, -0.4853, 7.6521



87.5855, -9.7579, 4.1972

Square

The Square scheme is like the rectangle color scheme, but the four colors are evenly spaced on the color wheel.



87.5855, -0.4876, 7.6535



87.5855, -7.7437, 8.6256



87.5855, -8.7911, 1.7799



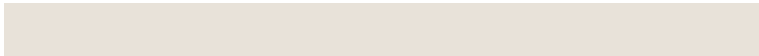
87.5855, -1.5697, 0.7255

Rectangle

The Rectangle color scheme consists of four colors that form a rectangle on the color wheel.



87.5836, -0.4853, 7.6521



87.5855, -4.3739, 9.5395



87.5855, -8.7911, 1.7799



87.5855, -4.9817, -0.2891

Sweetspot

The Sweet Spot groups the original color and five complimentary colors.



87.5855, -0.4876, 7.6535



98.5018, -4.0028, 6.2368



87.1200, 3.5367, 0.1684



45.6057, -1.8826, 2.8671

0.0000, NaN, NaN



46.2646, -2.4686, 2.5136

Same Dimension

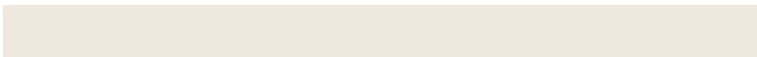
The Same Dimension uses a secret algorithm to generate beautiful new colors.



87.5855, -0.4876, 7.6535



93.3493, 0.7769, 9.0221



90.1663, -4.8364, 10.4931



40.2621, 0.4704, 3.9807



33.4637, 49.1883, 21.4813



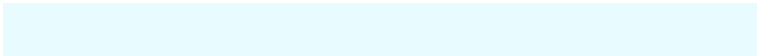
10.2901, 12.2468, 6.5551

Inverse Universe

The Inverse Universe completely reimagines the original color for something new.



89.9780, -8.7555, 1.9893



96.6146, -10.5102, 1.2910



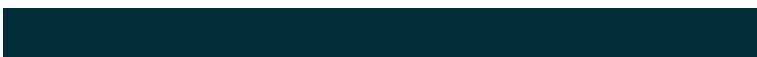
87.3511, -4.4460, -1.1568



41.7444, -4.6538, 0.4710



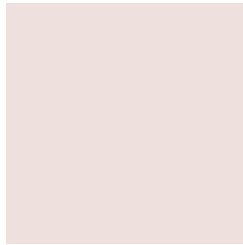
50.6229, -19.1220, -21.9953



15.0168, -6.0658, -5.6754

Previews

White Background



This preview shows how the HunterLab color 87.5836, -0.4853, 7.6521 looks on a white background.

Color Contrast Check

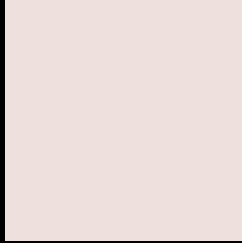
Large Text (above 18pt) WCAG AA × Fail

Any Text WCAG AA × Fail

Large Text (above 18pt) WCAG AAA × Fail

Any Text WCAG AAA × Fail

Black Background



This preview shows how the HunterLab color 87.5836, -0.4853, 7.6521 looks on a black background.

Color Contrast Check

Large Text (above 18pt) WCAG AA ✓ Pass

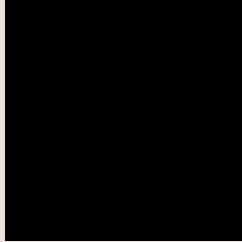
Any Text WCAG AA ✓ Pass

Large Text (above 18pt) WCAG AAA ✓ Pass

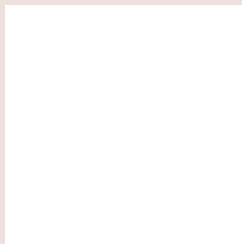
Any Text WCAG AAA ✓ Pass

If you want to check with other color combinations, try the [Color Contrast Checker](#).

HunterLab 87.5836, -0.4853, 7.6521 Background



This preview shows how black text looks on a background with the HunterLab color 87.5836, -0.4853, 7.6521.



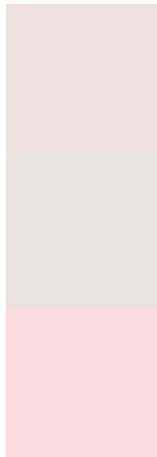
This preview shows how white text looks on a background with the HunterLab color 87.5836, -0.4853,

7.6521.

Color Blindness Simulation

Color vision deficiency is a very complex topic, and I could not describe the different causes any better than Wikipedia does, so if you want to learn more, you should check out their [article about color blindness](#).

Dichromacy



Original Color

87.5836, -0.4853, 7.6521

Protanopia

87.6484, -3.3730, 7.2017

Deuteranopia

87.4335, 6.8448, 7.1333



Tritanopia

87.5475, 5.2384, -1.2656

Trichromacy



Original Color

87.5836, -0.4853, 7.6521

Protanomaly

87.5310, -2.1877, 7.0874

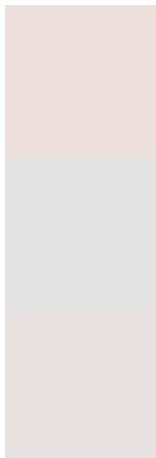
Deuteranomaly

87.5098, 4.0167, 7.1716

Tritanomaly

87.5180, 3.1201, 2.2628

Monochromacy



Original Color

87.5836, -0.4853, 7.6521

Achromatopsia

88.0808, -4.6998, 4.7856

Achromatomaly

88.0512, -3.3887, 6.2314

CSS Examples

Text

The CSS property to change the color of the text to HunterLab 87.5836, -0.4853, 7.6521 is called "color". The color property can be set on classes, ids or directly on the HTML element.

This example shows how text in the color `rgb(238, 224, 221)` looks like.

```
.text, #text, p{  
    color:rgb(238, 224, 221)  
}
```

If you want to add a text shadow in that color use the text-shadow property, you can generate a text shadow directly with our [CSS Text Shadow Generator](#).

Here you see how black text with a 4 pixel rgb(238, 224, 221) colored shadow looks like.

```
.shadow{ text-shadow: 4px 4px 2px rgb(238, 224, 221) }
```

Border

The CSS property to change the border of an element to HunterLab 87.5836, -0.4853, 7.6521 is called "border". The border property can be set on classes, ids or directly on the HTML element.

This example shows the color as border, it can be applied via the CSS property "border" or "border-color".

```
.border, #border, table{ border:4px solid rgb(238, 224, 221) }
```


If only the border color should be changed use the property `border-color`.

```
.border{ border-color:rgb(238, 224, 221) }
```

If you want to add a box shadow in that color use:

Here you see how a box with a 4 pixel `rgb(238, 224, 221)` colored shadow looks like.

```
.boxshadow{ -moz-box-shadow:4px 4px 4px  
4px rgb(238, 224, 221); -webkit-box-  
shadow:4px 4px 4px 4px rgb(238, 224, 221);  
box-shadow:4px 4px 4px 4px rgb(238, 224,  
221) }
```

Background

The CSS property to change the background color of an element to HunterLab 87.5836, -0.4853, 7.6521 is called "background". The background property can be set on classes, ids or directly on the HTML element.

```
.background, #background, body{  
background: rgb(238, 224, 221) }
```

If only the background color should be changed can be used:

```
.background{ background-color: rgb(238,  
224, 221) }
```

This example shows the color as background, it is applied via the CSS property "background".

To optimize and compress your CSS code, you can use our [online CSS compressor and optimizer](#) based on csstidy. If you want to create a linear or radial gradient as background or border, check our [CSS Gradient Generator](#).

Hey! You found this booklet interesting? Support Converting Colors with the new Membership Option!

The pro membership hides all ads, plus gives you double the colors in the color bucket, and more awesome pro features!

[Learn more, Memberships starting at \\$2.50/m!](#)

**Follow me
on Twitter!**

@ConvertingColor