

Converting Colors

HunterLab(87.7107, 1.1678,
8.2874)

Have a look what the booklet for
HunterLab(87.7107, 1.1678, 8.2874)
contains.

HunterLab(87.6470, 1.2428, 8.2259)	3
<i>Conversions</i>	4
<i>Details</i>	6
<i>Harmonies</i>	12
<i>Previews</i>	24
<i>Color Blindness Simulation</i>	28
<i>CSS Examples</i>	31

Color

**HunterLab(87.6470, 1.2428,
8.2259)**

Conversions

Conversions Part 1

Format	Color
Hex	F2DFDC
RGB	242, 223, 220
RGB Percent	95%, 87%, 86%
CMY	0.0510, 0.1255, 0.1372
CMYK	0.00, 0.08, 0.09, 0.05
HSL	8°, 46%, 91%
HSV	8°, 9%, 95%
XYZ	75.9239, 76.8200, 78.5364
YIQ	228.3390, 12.2870, 3.0950

Conversions

Conversions Part 2

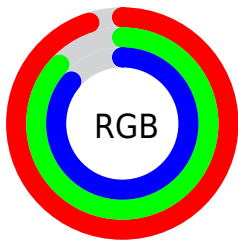
Format	Color
R _Y B	242, 223, 220
Decimal	15917020
CIE Lab	90.24, 6.00, 3.81
CIE LCh	90, 7.106, 32.405
Yxy	76.8233, 0.3283, 0.3322
Android (android.graphics.Color)	4294107100 (0xFFFF2DFDC)
YUV	228.3390, -4.1111, 11.9807
Hunter-Lab	87.6470, 1.2428, 8.2259

Details

The HunterLab color $87.6470, 1.2428, 8.2259$ is a light color, and the websafe version is hex `CCCCCC`. A complement of this color would be $91.3006, -10.3913, 1.5246$, and the grayscale version is $88.2441, -4.7085, 4.7945$.

A 20% lighter version of the original color is $100.0000, -5.3358, 5.4332$, and $64.1568, 1.9196, 6.6698$ is the 20% darker color. If you saturate the color by 10%, you get $80.7136, 8.4846, 11.6080$, and if you desaturate by 10%, it is $94.9017, -5.6395, 4.8076$.

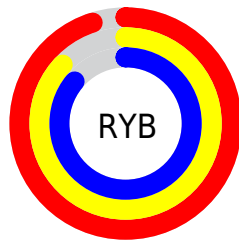
Distribution



Red (95%)

Green (87%)

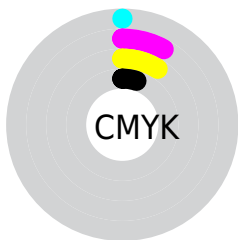
Blue (86%)



Red (95%)

Yellow (87%)

Blue (86%)

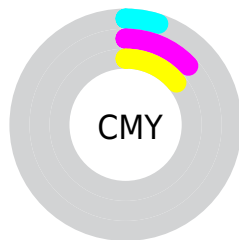


Cyan (0%)

Magenta (8%)

Yellow (9%)

Black (5%)



Cyan (5%)

Magenta (13%)

Yellow (14%)

Brightness & Saturation Gradients

These gradients show how the HunterLab color 87.6470, 1.2428, 8.2259 changes by changing the brightness by 10 percent. The first figure shows a shift by +10% for each color and the second figure -10%.

Similar to the brightness gradients but the following saturation gradients show a change of the HunterLab color 87.6470, 1.2428, 8.2259 by changing the saturation by 10% instead.

87.6470, 1.2428,
8.2259

87.6470, 1.2428,
8.2259

220.0367, -3.7522,
16.7199

75.5698, 1.6076,
7.3960

113.5298, 0.3781,
9.9599

64.1029, 1.9277,
6.5883

127.2832, -0.1116,
10.8605

53.2831, 2.1964,
5.8042

141.5511, -0.6374,
11.7834

43.1515, 2.4081,
5.0437

156.3156, -1.1976,
12.7283

33.7586, 2.5557,
4.3058

171.5605, -1.7904,
13.6948

25.1677, 2.6291,
3.5888

187.2710, -2.4146,

17.4622, 2.6138,

14.6825

2.8887

203.4339, -3.0689,
15.6910

■ 10.7588, 2.4870,
2.1961

■ 1.6308, 15.9438,
1.1416

■ 87.6470, 1.2428,
8.2259

■ 87.6470, 1.2428,
8.2259

■ 80.7136, 8.4846,
11.6080

■ 94.9017, -5.6395,
4.8076

■ 74.1458, 16.1203,
14.9209

■ 98.8015, -9.5302,
3.9409

■ 68.0068, 24.1483,
18.1183

■ 62.3706, 32.5176,
21.1255

■ 57.3237, 41.0898,
23.8323

■ 52.9619, 49.5958,
26.0910

■ 49.3803, 57.6081,
27.7310

■ 46.6550, 64.5657,
28.6069

■ 44.8121, 69.8767,
28.7527

Harmonies

Analogous

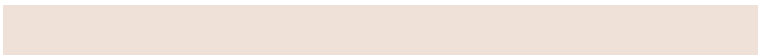
The Analogous color harmony consists of three colors that are next to each other on the color wheel.



87.6489, 2.3432, 5.0469



87.6470, 1.2428, 8.2259



87.6489, -1.4515, 10.4090

Triad

The Triadic color harmony groups three colors that are evenly spaced from another and form a triangle on the color wheel.



87.6489, 1.2404, 8.2273



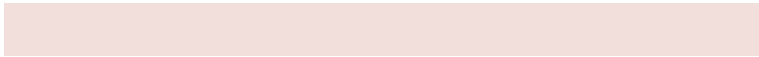
87.6489, -10.7328, 7.7670



87.6489, -4.3907, -2.0671

Complementary

The Complementary color scheme is a pair of colors which are on the opposite of each other on the color wheel.



87.6470, 1.2428, 8.2259



91.3006, -10.3913, 1.5246

Split Complementary

Split-complementary colors differ from the complementary color scheme. The scheme consists of three colors, the original color and two neighbors of the complement color.



87.6489, -7.8653, -1.2684



87.6470, 1.2428, 8.2259



87.6489, -11.4916, 4.4942

Square

The Square scheme is like the rectangle color scheme, but the four colors are evenly spaced on the color wheel.



87.6489, 1.2404, 8.2273



87.6489, -8.3606, 10.1509



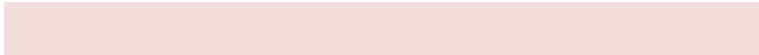
87.6489, -10.4501, 1.1679



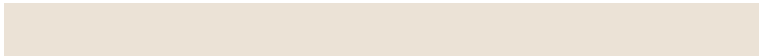
87.6489, -0.9405, -0.9732

Rectangle

The Rectangle color scheme consists of four colors that form a rectangle on the color wheel.



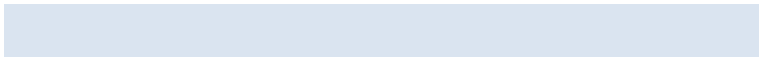
87.6470, 1.2428, 8.2259



87.6489, -3.7645, 11.0510



87.6489, -10.4501, 1.1679



87.6489, -5.5946, -2.0111

Sweetspot

The Sweet Spot groups the original color and five complimentary colors.



87.6489, 1.2404, 8.2273



97.6600, -3.1679, 6.5274



87.3503, 6.1250, -1.5321



44.8948, -1.1950, 3.1550

0.0000, NaN, NaN



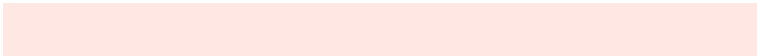
46.2646, -2.4686, 2.5136

Same Dimension

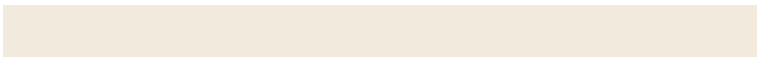
The Same Dimension uses a secret algorithm to generate beautiful new colors.



87.6489, 1.2404, 8.2273



91.5600, 2.7766, 9.4311



91.0238, -4.4862, 11.9048



40.1333, 0.6932, 3.8383



32.9232, 50.9306, 21.1787



10.0496, 12.9573, 6.4193

Inverse Universe

The Inverse Universe completely reimagines the original color for something new.



91.3006, -10.3913, 1.5246



96.2513, -12.1724, 0.8189



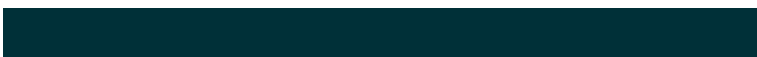
87.8357, -4.7417, -2.6635



41.8799, -4.8708, 0.6322



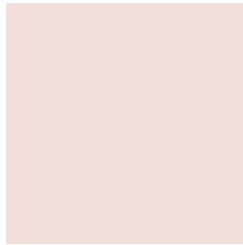
52.9889, -22.2353, -18.2319



15.6093, -6.8324, -4.7611

Previews

White Background



This preview shows how the HunterLab color 87.6470, 1.2428, 8.2259 looks on a white background.

Color Contrast Check

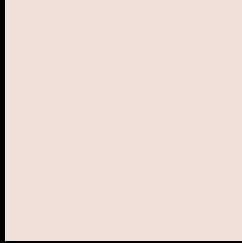
Large Text (above 18pt) WCAG AA × Fail

Any Text WCAG AA × Fail

Large Text (above 18pt) WCAG AAA × Fail

Any Text WCAG AAA × Fail

Black Background



This preview shows how the HunterLab color 87.6470, 1.2428, 8.2259 looks on a black background.

Color Contrast Check

Large Text (above 18pt) WCAG AA ✓ Pass

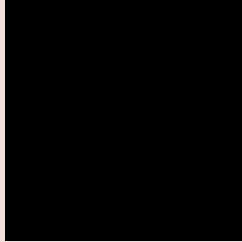
Any Text WCAG AA ✓ Pass

Large Text (above 18pt) WCAG AAA ✓ Pass

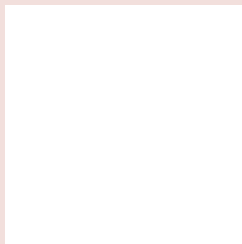
Any Text WCAG AAA ✓ Pass

If you want to check with other color combinations, try the [Color Contrast Checker](#).

HunterLab 87.6470, 1.2428, 8.2259 Background



This preview shows how black text looks on a background with the HunterLab color 87.6470, 1.2428, 8.2259.



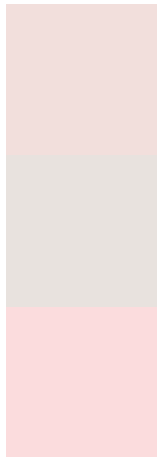
This preview shows how white text looks on a background with the HunterLab color 87.6470, 1.2428,

8.2259.

Color Blindness Simulation

Color vision deficiency is a very complex topic, and I could not describe the different causes any better than Wikipedia does, so if you want to learn more, you should check out their [article about color blindness](#).

Dichromacy



Original Color

87.6470, 1.2428, 8.2259

Protanopia

87.6484, -3.3730, 7.2017

Deuteranopia

87.7018, 6.1468, 7.9034



Tritanopia

87.5172, 6.6151, -0.7561

Trichromacy



Original Color

87.6470, 1.2428, 8.2259

Protanomaly

87.6948, -1.6842, 7.7583

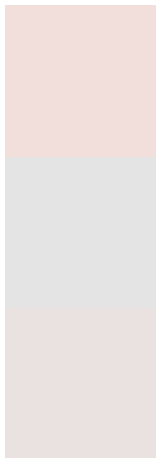
Deuteranomaly

87.6868, 4.5534, 7.8584

Tritanomaly

87.4855, 4.5010, 2.7510

Monochromacy



Original Color

87.6470, 1.2428, 8.2259

Achromatopsia

88.0808, -4.6998, 4.7856

Achromatomaly

87.8365, -2.5373, 5.9967

CSS Examples

Text

The CSS property to change the color of the text to HunterLab 87.6470, 1.2428, 8.2259 is called "color". The color property can be set on classes, ids or directly on the HTML element.

This example shows how text in the color `rgb(242, 223, 220)` looks like.

```
.text, #text, p{  
    color:rgb(242, 223, 220)  
}
```

If you want to add a text shadow in that color use the text-shadow property, you can generate a text shadow directly with our [CSS Text Shadow Generator](#).

Here you see how black text with a 4 pixel rgb(242, 223, 220) colored shadow looks like.

```
.shadow{ text-shadow: 4px 4px 2px rgb(242, 223, 220) }
```

Border

The CSS property to change the border of an element to HunterLab 87.6470, 1.2428, 8.2259 is called "border".

The border property can be set on classes, ids or directly on the HTML element.

This example shows the color as border, it can be applied via the CSS property "border" or "border-color".

```
.border, #border, table{ border:4px solid rgb(242, 223, 220) }
```


If only the border color should be changed use the property `border-color`.

```
.border{ border-color:rgb(242, 223, 220) }
```

If you want to add a box shadow in that color use:

Here you see how a box with a 4 pixel `rgb(242, 223, 220)` colored shadow looks like.

```
.boxshadow{ -moz-box-shadow:4px 4px 4px  
4px rgb(242, 223, 220); -webkit-box-  
shadow:4px 4px 4px 4px rgb(242, 223, 220);  
box-shadow:4px 4px 4px 4px rgb(242, 223,  
220) }
```

Background

The CSS property to change the background color of an element to HunterLab 87.6470, 1.2428, 8.2259 is called "background". The background property can be set on classes, ids or directly on the HTML element.

```
.background, #background, body{  
background: rgb(242, 223, 220) }
```

If only the background color should be changed can be used:

```
.background{ background-color: rgb(242,  
223, 220) }
```

This example shows the color as background, it is applied via the CSS property "background".

To optimize and compress your CSS code, you can use our [online CSS compressor and optimizer](#) based on csstidy. If you want to create a linear or radial gradient as background or border, check our [CSS Gradient Generator](#).

Hey! You found this booklet interesting? Support Converting Colors with the new Membership Option!

The pro membership hides all ads, plus gives you double the colors in the color bucket, and more awesome pro features!

[Learn more, Memberships starting at \\$2.50/m!](#)

**Follow me
on Twitter!**

@ConvertingColor