

Converting Colors

HunterLab(87.7560, 0.7404,
6.3791)

Have a look what the booklet for
HunterLab(87.7560, 0.7404, 6.3791)
contains.

HunterLab(87.8740, 0.6928, 6.5780)	3
<i>Conversions</i>	4
<i>Details</i>	6
<i>Harmonies</i>	12
<i>Previews</i>	24
<i>Color Blindness Simulation</i>	28
<i>CSS Examples</i>	31

Color

**HunterLab(87.8740, 0.6928,
6.5780)**

Conversions

Conversions Part 1

Format	Color
Hex	F0E0E0
RGB	240, 224, 224
RGB Percent	94%, 88%, 88%
CMY	0.0588, 0.1215, 0.1216
CMYK	0.00, 0.07, 0.07, 0.06
HSL	0°, 35%, 91%
HSV	0°, 7%, 94%
XYZ	76.0454, 77.2184, 81.4177
YIQ	228.7840, 9.5360, 3.3920

Conversions

Conversions Part 2

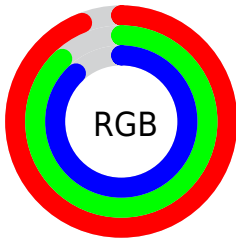
Format	Color
R_{YB}	240, 224, 224
Decimal	15786208
CIE Lab	90.42, 5.46, 1.96
CIE LCh	90, 5.797, 19.732
Yxy	77.2218, 0.3240, 0.3290
Android (android.graphics.Color)	4293976288 (0xFFFF0E0E0)
YUV	228.7840, -2.3585, 9.8364
Hunter-Lab	87.8740, 0.6928, 6.5780

Details

The HunterLab color $87.8740, 0.6928, 6.5780$ is a light color, and the websafe version is hex `CCCCCC`. A complement of this color would be $91.9007, -10.0471, 3.2671$, and the grayscale version is $88.4320, -4.7185, 4.8047$.

A 20% lighter version of the original color is $100.0000, -5.3358, 5.4332$, and $64.3668, 1.3813, 5.1112$ is the 20% darker color. If you saturate the color by 10%, you get $80.0061, 9.5122, 8.9706$, and if you desaturate by 10%, it is $96.1444, -7.7578, 4.3419$.

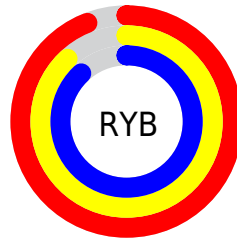
Distribution



Red (94%)

Green (88%)

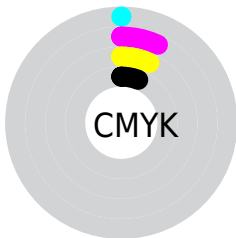
Blue (88%)



Red (94%)

Yellow (88%)

Blue (88%)

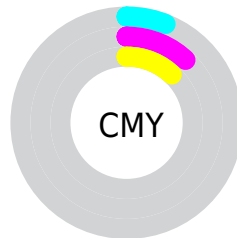


Cyan (0%)

Magenta (7%)

Yellow (7%)

Black (6%)



Cyan (6%)

Magenta (12%)

Yellow (12%)

Brightness & Saturation Gradients

These gradients show how the HunterLab color 87.8740, 0.6928, 6.5780 changes by changing the brightness by 10 percent. The first figure shows a shift by +10% for each color and the second figure -10%.

Similar to the brightness gradients but the following saturation gradients show a change of the HunterLab color 87.8740, 0.6928, 6.5780 by changing the saturation by 10% instead.

87.8740, 0.6928,
6.5780

87.8740, 0.6928,
6.5780

220.3451, -4.4940,
14.4461

75.7858, 1.0833,
5.8330

113.7772, -0.2198,
8.1541

64.3075, 1.4304,
5.1150

127.5402, -0.7321,
8.9807

53.4754, 1.7276,
4.4265

141.8174, -1.2798,
9.8324

43.3308, 1.9696,
3.7685

156.5909, -1.8610,
10.7086

33.9238, 2.1497,
3.1420

171.8444, -2.4743,
11.6087

25.3175, 2.2584,
2.5480

187.5634, -3.1184,

17.5949, 2.2823,

12.5320

1.9870

203.7344, -3.7920,
13.4779

■ 10.8718, 2.1995,
1.4581

■ 2.1655, 10.8645,
1.5159

■ 87.8740, 0.6928,
6.5780

■ 87.8740, 0.6928,
6.5780

■ 80.0061, 9.5122,
8.9706

■ 96.1444, -7.7578,
4.3419

■ 72.6070, 18.7257,
11.5266

■ 98.6233, -10.1586,
3.7174

■ 65.7699, 28.2982,
14.2430

■ 59.6072, 38.0958,
17.0828

■ 54.2521, 47.8148,
19.9538

■ 49.8480, 56.9160,
22.6853

■ 46.5232, 64.6358,
25.0307

■ 44.3460, 70.1753,
26.7273

■ 43.2643, 73.0925,
27.6240

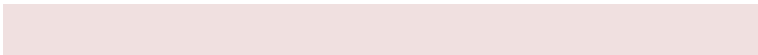
Harmonies

Analogous

The Analogous color harmony consists of three colors that are next to each other on the color wheel.



87.8759, 0.9378, 3.8195



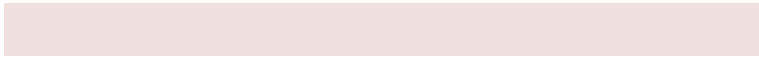
87.8740, 0.6928, 6.5780



87.8759, -1.0102, 8.7880

Triad

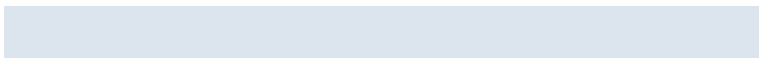
The Triadic color harmony groups three colors that are evenly spaced from another and form a triangle on the color wheel.



87.8759, 0.6905, 6.5794



87.8759, -8.9650, 8.1883



87.8759, -5.6988, -0.6737

Complementary

The Complementary color scheme is a pair of colors which are on the opposite of each other on the color wheel.



87.8740, 0.6928, 6.5780



91.9007, -10.0471, 3.2671

Split Complementary

Split-complementary colors differ from the complementary color scheme. The scheme consists of three colors, the original color and two neighbors of the complement color.



87.8759, -8.3172, 0.5808



87.8740, 0.6928, 6.5780



87.8759, -10.1865, 5.7364

Square

The Square scheme is like the rectangle color scheme, but the four colors are evenly spaced on the color wheel.



87.8759, 0.6905, 6.5794



87.8759, -6.5938, 9.6955



87.8759, -9.9510, 2.9485



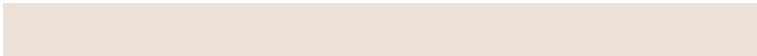
87.8759, -2.7770, -0.4299

Rectangle

The Rectangle color scheme consists of four colors that form a rectangle on the color wheel.



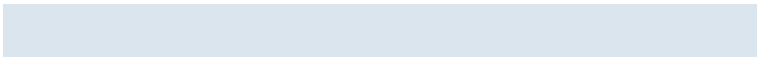
87.8740, 0.6928, 6.5780



87.8759, -2.7269, 9.6793



87.8759, -9.9510, 2.9485



87.8759, -6.6430, -0.4117

Sweetspot

The Sweet Spot groups the original color and five complimentary colors.



87.8759, 0.6905, 6.5794



98.2170, -3.5252, 5.9119



88.3906, 3.4794, -0.7710



45.4804, -1.6726, 2.7241

0.0000, NaN, NaN



46.2646, -2.4686, 2.5136

Same Dimension

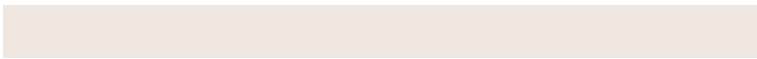
The Same Dimension uses a secret algorithm to generate beautiful new colors.



87.8759, 0.6905, 6.5794



92.9656, 2.0003, 7.3865



90.3446, -3.5043, 9.3273



39.6983, 1.4510, 3.3544



31.8466, 54.5299, 20.5784



9.1867, 15.7237, 5.9361

Inverse Universe

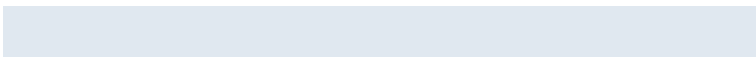
The Inverse Universe completely reimagines the original color for something new.



91.9007, -10.0471, 3.2671



98.1483, -11.8298, 3.1202



89.3604, -5.9143, 0.2623



42.3418, -5.6054, 1.1776



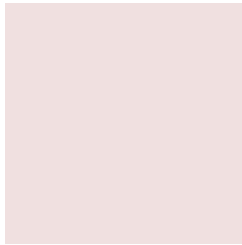
61.2693, -32.4715, -6.4846



17.6724, -9.3665, -1.8695

Previews

White Background



This preview shows how the HunterLab color 87.8740, 0.6928, 6.5780 looks on a white background.

Color Contrast Check

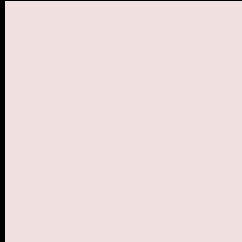
Large Text (above 18pt) WCAG AA × Fail

Any Text WCAG AA × Fail

Large Text (above 18pt) WCAG AAA × Fail

Any Text WCAG AAA × Fail

Black Background



This preview shows how the HunterLab color 87.8740, 0.6928, 6.5780 looks on a black background.

Color Contrast Check

Large Text (above 18pt) WCAG AA ✓ Pass

Any Text WCAG AA ✓ Pass

Large Text (above 18pt) WCAG AAA ✓ Pass

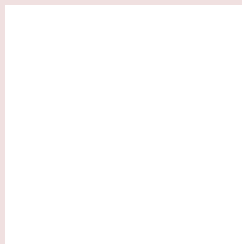
Any Text WCAG AAA ✓ Pass

If you want to check with other color combinations, try the [Color Contrast Checker](#).

HunterLab 87.8740, 0.6928, 6.5780 Background



This preview shows how black text looks on a background with the HunterLab color 87.8740, 0.6928, 6.5780.



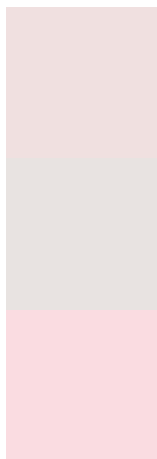
This preview shows how white text looks on a background with the HunterLab color 87.8740, 0.6928,

6.5780.

Color Blindness Simulation

Color vision deficiency is a very complex topic, and I could not describe the different causes any better than Wikipedia does, so if you want to learn more, you should check out their [article about color blindness](#).

Dichromacy



Original Color

87.8740, 0.6928, 6.5780

Protanopia

88.0512, -3.3887, 6.2314

Deuteranopia

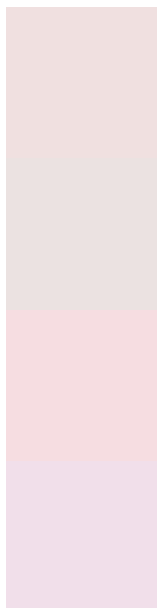
87.7192, 6.4512, 6.0175



Tritanopia

87.9499, 5.0417, -0.7681

Trichromacy



Original Color

87.8740, 0.6928, 6.5780

Protanomaly

88.0290, -1.8732, 6.2321

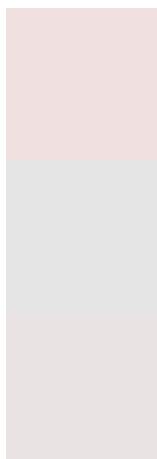
Deuteranomaly

87.6025, 4.5151, 5.8475

Tritanomaly

87.9867, 3.2782, 1.8205

Monochromacy



Original Color

87.8740, 0.6928, 6.5780

Achromatopsia

88.5177, -4.7231, 4.8093

Achromatomaly

88.2088, -2.7192, 5.4586

CSS Examples

Text

The CSS property to change the color of the text to HunterLab 87.8740, 0.6928, 6.5780 is called "color". The color property can be set on classes, ids or directly on the HTML element.

This example shows how text in the color `rgb(240, 224, 224)` looks like.

```
.text, #text, p{  
    color:rgb(240, 224, 224)  
}
```

If you want to add a text shadow in that color use the text-shadow property, you can generate a text shadow directly with our [CSS Text Shadow Generator](#).

Here you see how black text with a 4 pixel rgb(240, 224, 224) colored shadow looks like.

```
.shadow{ text-shadow: 4px 4px 2px rgb(240, 224, 224) }
```

Border

The CSS property to change the border of an element to HunterLab 87.8740, 0.6928, 6.5780 is called "border". The border property can be set on classes, ids or directly on the HTML element.

This example shows the color as border, it can be applied via the CSS property "border" or "border-color".

```
.border, #border, table{ border:4px solid rgb(240, 224, 224) }
```


If only the border color should be changed use the property `border-color`.

```
.border{ border-color:rgb(240, 224, 224) }
```

If you want to add a box shadow in that color use:

Here you see how a box with a 4 pixel `rgb(240, 224, 224)` colored shadow looks like.

```
.boxshadow{ -moz-box-shadow:4px 4px 4px  
4px rgb(240, 224, 224); -webkit-box-  
shadow:4px 4px 4px 4px rgb(240, 224, 224);  
box-shadow:4px 4px 4px 4px rgb(240, 224,  
224) }
```

Background

The CSS property to change the background color of an element to HunterLab 87.8740, 0.6928, 6.5780 is called "background". The background property can be set on classes, ids or directly on the HTML element.

```
.background, #background, body{  
background: rgb(240, 224, 224) }
```

If only the background color should be changed can be used:

```
.background{ background-color: rgb(240,  
224, 224) }
```

This example shows the color as background, it is applied via the CSS property "background".

To optimize and compress your CSS code, you can use our [online CSS compressor and optimizer](#) based on csstidy. If you want to create a linear or radial gradient as background or border, check our [CSS Gradient Generator](#).

Hey! You found this booklet interesting? Support Converting Colors with the new Membership Option!

The pro membership hides all ads, plus gives you double the colors in the color bucket, and more awesome pro features!

[Learn more, Memberships starting at \\$2.50/m!](#)

**Follow me
on Twitter!**

@ConvertingColor