

# Converting Colors

HunterLab(87.7671, 1.6810,  
7.4259)

Have a look what the booklet for  
HunterLab(87.7671, 1.6810, 7.4259)  
contains.

<b>HunterLab(87.7078, 1.5717, 7.3565)</b> .....	3
<b><i>Conversions</i></b> .....	4
<b><i>Details</i></b> .....	6
<b><i>Harmonies</i></b> .....	12
<b><i>Previews</i></b> .....	24
<b><i>Color Blindness Simulation</i></b> .....	28
<b><i>CSS Examples</i></b> .....	31

# Color

**HunterLab(87.7078, 1.5717,  
7.3565)**

# Conversions

## Conversions Part 1

Format	Color
Hex	F2DFDE
RGB	242, 223, 222
RGB Percent	95%, 87%, 87%
CMY	0.0510, 0.1255, 0.1294
CMYK	0.00, 0.08, 0.08, 0.05
HSL	3°, 43%, 91%
HSV	3°, 8%, 95%
XYZ	76.1905, 76.9266, 79.9399
YIQ	228.5670, 11.6450, 3.7170

# Conversions

## Conversions Part 2

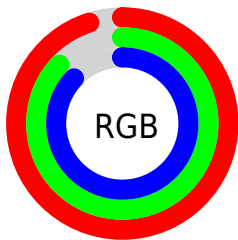
<b>Format</b>	<b>Color</b>
R <sub>Y</sub> B	242, 223, 222
Decimal	15917022
CIE Lab	90.29, 6.33, 2.83
CIE LCh	90, 6.934, 24.093
Yxy	76.9300, 0.3269, 0.3301
Android (android.graphics.Color)	4294107102 (0xFFFF2DFDE)
YUV	228.5670, -3.2375, 11.7807
Hunter-Lab	87.7078, 1.5717, 7.3565

# Details

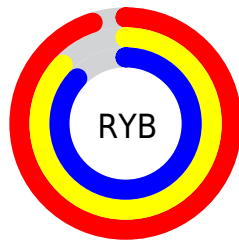
The HunterLab color  $87.7078, 1.5717, 7.3565$  is a light color, and the websafe version is hex `CCCCCC`. A complement of this color would be  $92.1138, -10.8121, 2.4999$ , and the grayscale version is  $88.3402, -4.7136, 4.7997$ .

A 20% lighter version of the original color is  $100.0000, -5.3358, 5.4332$ , and  $64.2140, 2.2280, 5.8516$  is the 20% darker color. If you saturate the color by 10%, you get  $80.1647, 9.8952, 10.1450$ , and if you desaturate by 10%, it is  $95.6293, -6.3830, 4.6570$ .

# Distribution



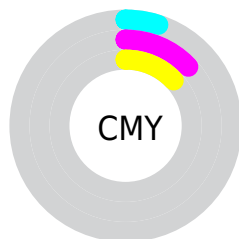
- Red (95%)
- Green (87%)
- Blue (87%)



- Red (95%)
- Yellow (87%)
- Blue (87%)



- Cyan (0%)
- Magenta (8%)
- Yellow (8%)
- Black (5%)



- Cyan (5%)
- Magenta (13%)
- Yellow (13%)

# Brightness & Saturation Gradients

These gradients show how the HunterLab color 87.7078, 1.5717, 7.3565 changes by changing the brightness by 10 percent. The first figure shows a shift by +10% for each color and the second figure -10%.

Similar to the brightness gradients but the following saturation gradients show a change of the HunterLab color 87.7078, 1.5717, 7.3565 by changing the saturation by 10% instead.



87.7078, 1.5717,  
7.3565

87.7078, 1.5717,  
7.3565

220.1193, -3.3115,  
15.5178

75.6276, 1.9217,  
6.5718

113.5960, 0.7349,  
9.0065

64.1577, 2.2262,  
5.8118

127.3521, 0.2583,  
9.8678

53.3346, 2.4784,  
5.0787

141.6225, -0.2548,  
10.7528

43.1995, 2.6727,  
4.3728

156.3893, -0.8026,  
11.6612

33.8028, 2.8016,  
3.6944

171.6365, -1.3836,  
12.5924

25.2078, 2.8548,  
3.0431

187.3494, -1.9962,

17.4977, 2.8175,

13.5459

2.4173

203.5144, -2.6392,  
14.5211

■ 10.7891, 2.6660,  
1.8125

■ 1.7898, 15.3161,  
1.2529

■ 87.7078, 1.5717,  
7.3565

■ 87.7078, 1.5717,  
7.3565

■ 80.1647, 9.8952,  
10.1450

■ 95.6293, -6.3830,  
4.6570

■ 73.0592, 18.6148,  
13.0123

■ 98.8015, -9.5301,  
3.9409

■ 66.4742, 27.7050,  
15.9353

■ 60.5092, 37.0586,  
18.8570

■ 55.2805, 46.4277,  
21.6712

■ 50.9142, 55.3673,  
24.2091

■ 47.5270, 63.2290,  
26.2509

■ 45.1913, 69.2821,  
27.5850

■ 43.8879, 72.9856,  
28.1583

# Harmonies

## Analogous

The Analogous color harmony consists of three colors that are next to each other on the color wheel.



87.7097, 2.1382, 4.1102



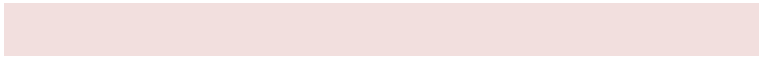
87.7078, 1.5717, 7.3565



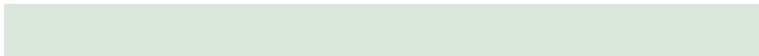
87.7097, -0.6866, 9.8227

# Triad

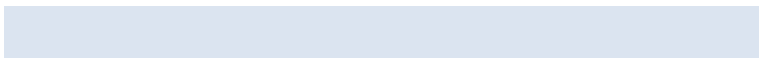
The Triadic color harmony groups three colors that are evenly spaced from another and form a triangle on the color wheel.



87.7097, 1.5693, 7.3579



87.7097, -10.0908, 8.4609



87.7097, -5.3789, -1.8630

# Complementary

The Complementary color scheme is a pair of colors which are on the opposite of each other on the color wheel.



87.7078, 1.5717, 7.3565



92.1138, -10.8121, 2.4999

# Split Complementary

Split-complementary colors differ from the complementary color scheme. The scheme consists of three colors, the original color and two neighbors of the complement color.



87.7097, -8.6124, -0.5932



87.7078, 1.5717, 7.3565



87.7097, -11.3051, 5.4332

# Square

The Square scheme is like the rectangle color scheme, but the four colors are evenly spaced on the color wheel.



87.7097, 1.5693, 7.3579



87.7097, -7.4260, 10.4417



87.7097, -10.7682, 2.1096



87.7097, -1.9092, -1.2985

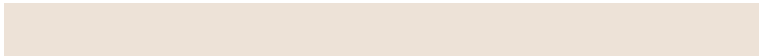


# Rectangle

The Rectangle color scheme consists of four colors that form a rectangle on the color wheel.



87.7078, 1.5717, 7.3565



87.7097, -2.8251, 10.7337



87.7097, -10.7682, 2.1096



87.7097, -6.5289, -1.6350

# Sweetspot

The Sweet Spot groups the original color and five complimentary colors.



87.7097, 1.5693, 7.3579



98.2976, -3.6604, 6.0039



88.0181, 5.4039, -1.7271



45.5158, -1.7321, 2.7646

0.0000, NaN, NaN

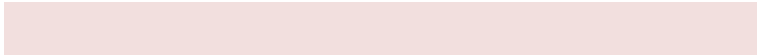


46.2646, -2.4686, 2.5136

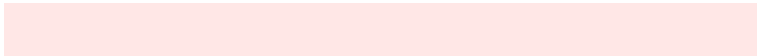


# Same Dimension

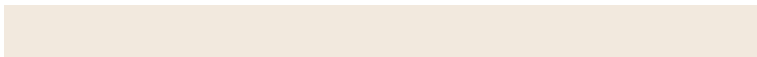
The Same Dimension uses a secret algorithm to generate beautiful new colors.



87.7097, 1.5693, 7.3579



91.6374, 3.1940, 8.3235



90.7910, -3.6787, 10.7502



39.8573, 1.1729, 3.5319



32.1576, 53.4715, 20.7515



9.5120, 14.6374, 6.1175

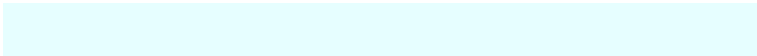


# Inverse Universe

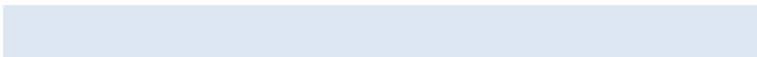
The Inverse Universe completely reimagines the original color for something new.



92.1138, -10.8121, 2.4999



97.2965, -12.7214, 2.0794



88.9345, -5.6486, -1.3018



42.1722, -5.3365, 0.9780



58.1923, -28.7719, -10.6250

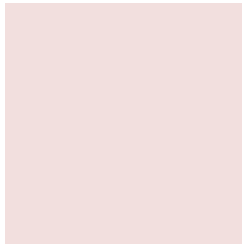


16.9074, -8.4485, -2.8948



# Previews

## White Background



This preview shows how the HunterLab color 87.7078, 1.5717, 7.3565 looks on a white background.

## Color Contrast Check

Large Text (above 18pt) WCAG AA × Fail

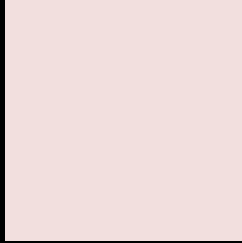
Any Text WCAG AA × Fail

Large Text (above 18pt) WCAG AAA × Fail

Any Text WCAG AAA × Fail



# Black Background



This preview shows how the HunterLab color 87.7078, 1.5717, 7.3565 looks on a black background.

## Color Contrast Check

Large Text (above 18pt) WCAG AA ✓ Pass

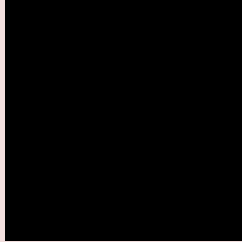
Any Text WCAG AA ✓ Pass

Large Text (above 18pt) WCAG AAA ✓ Pass

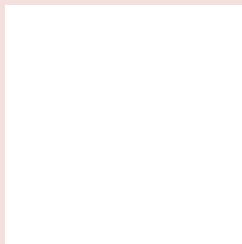
Any Text WCAG AAA ✓ Pass

If you want to check with other color combinations, try the [Color Contrast Checker](#).

## HunterLab 87.7078, 1.5717, 7.3565 Background



This preview shows how black text looks on a background with the HunterLab color 87.7078, 1.5717, 7.3565.



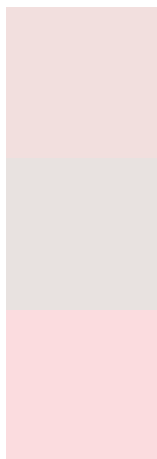
This preview shows how white text looks on a background with the HunterLab color 87.7078, 1.5717,

7.3565.

# Color Blindness Simulation

Color vision deficiency is a very complex topic, and I could not describe the different causes any better than Wikipedia does, so if you want to learn more, you should check out their [article about color blindness](#).

## Dichromacy



### Original Color

87.7078, 1.5717, 7.3565

### Protanopia

87.7099, -3.0370, 6.3226

### Deuteranopia

87.7629, 6.4740, 7.0295



## Tritanopia

87.8175, 6.0783, -0.3931

# Trichromacy



## Original Color

87.7078, 1.5717, 7.3565

## Protanomaly

87.7559, -1.3515, 6.8844

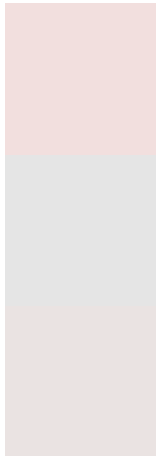
## Deuteranomaly

87.7480, 4.8818, 6.9844

## Tritanomaly

87.8199, 4.1418, 2.6446

# Monochromacy



## Original Color

87.7078, 1.5717, 7.3565

## Achromatopsia

88.5177, -4.7231, 4.8093

## Achromatomaly

88.2732, -2.5589, 6.0214

# CSS Examples

## Text

The CSS property to change the color of the text to HunterLab 87.7078, 1.5717, 7.3565 is called "color". The color property can be set on classes, ids or directly on the HTML element.

This example shows how text in the color `rgb(242, 223, 222)` looks like.

```
.text, #text, p{  
    color:rgb(242, 223, 222)  
}
```

If you want to add a text shadow in that color use the text-shadow property, you can generate a text shadow directly with our [CSS Text Shadow Generator](#).

Here you see how black text with a 4 pixel rgb(242, 223, 222) colored shadow looks like.

```
.shadow{ text-shadow: 4px 4px 2px rgb(242, 223, 222) }
```

## Border

The CSS property to change the border of an element to HunterLab 87.7078, 1.5717, 7.3565 is called "border". The border property can be set on classes, ids or directly on the HTML element.

This example shows the color as border, it can be applied via the CSS property "border" or "border-color".

```
.border, #border, table{ border:4px solid rgb(242, 223, 222) }
```



If only the border color should be changed use the property `border-color`.

```
.border{ border-color:rgb(242, 223, 222) }
```

If you want to add a box shadow in that color use:

Here you see how a box with a 4 pixel `rgb(242, 223, 222)` colored shadow looks like.

```
.boxshadow{ -moz-box-shadow:4px 4px 4px  
4px rgb(242, 223, 222); -webkit-box-  
shadow:4px 4px 4px 4px rgb(242, 223, 222);  
box-shadow:4px 4px 4px 4px rgb(242, 223,  
222) }
```

# Background

The CSS property to change the background color of an element to HunterLab 87.7078, 1.5717, 7.3565 is called "background". The background property can be set on classes, ids or directly on the HTML element.

```
.background, #background, body{  
background: rgb(242, 223, 222) }
```

If only the background color should be changed can be used:

```
.background{ background-color: rgb(242,  
223, 222) }
```

This example shows the color as background, it is applied via the CSS property "background".

To optimize and compress your CSS code, you can use our [online CSS compressor and optimizer](#) based on csstidy. If you want to create a linear or radial gradient as background or border, check our [CSS Gradient Generator](#).

Hey! You found this booklet interesting? Support Converting Colors with the new Membership Option!

The pro membership hides all ads, plus gives you double the colors in the color bucket, and more awesome pro features!

**[Learn more, Memberships starting at \\$2.50/m!](#)**

**Follow me  
on Twitter!**

@ConvertingColor