

Converting Colors

HunterLab(87.7996, -0.0918,
8.1297)

Have a look what the booklet for
HunterLab(87.7996, -0.0918, 8.1297)
contains.

HunterLab(87.7821, 0.1949, 7.8910)	3
<i>Conversions</i>	4
<i>Details</i>	6
<i>Harmonies</i>	12
<i>Previews</i>	24
<i>Color Blindness Simulation</i>	28
<i>CSS Examples</i>	31

Color

**HunterLab(87.7821, 0.1949,
7.8910)**

Conversions

Conversions Part 1

Format	Color
Hex	F0E0DD
RGB	240, 224, 221
RGB Percent	94%, 88%, 87%
CMY	0.0588, 0.1215, 0.1333
CMYK	0.00, 0.07, 0.08, 0.06
HSL	9°, 39%, 90%
HSV	9°, 8%, 94%
XYZ	75.6419, 77.0570, 79.2933
YIQ	228.4420, 10.4990, 2.4590

Conversions

Conversions Part 2

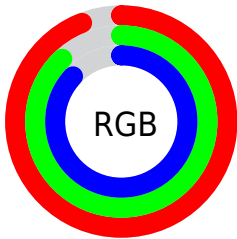
Format	Color
R _Y B	240, 225, 221
Decimal	15786205
CIE Lab	90.35, 4.95, 3.42
CIE LCh	90, 6.021, 34.635
Yxy	77.0603, 0.3261, 0.3322
Android (android.graphics.Color)	4293976285 (0xFFFF0E0DD)
YUV	228.4420, -3.6689, 10.1364
Hunter-Lab	87.7821, 0.1949, 7.8910

Details

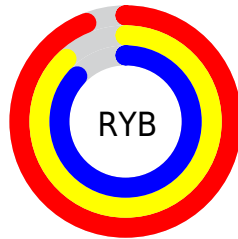
The HunterLab color $87.7821, 0.1949, 7.8910$ is a light color, and the websafe version is hex `CCCCCC`. A complement of this color would be $90.6809, -9.4230, 1.8111$, and the grayscale version is $88.2877, -4.7108, 4.7968$.

A 20% lighter version of the original color is $100.0000, -5.3358, 5.4332$, and $64.2802, 0.9130, 6.3494$ is the 20% darker color. If you saturate the color by 10%, you get $81.0232, 7.0471, 11.3946$, and if you desaturate by 10%, it is $94.8401, -6.3078, 4.3238$.

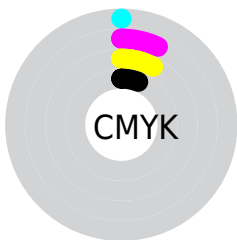
Distribution



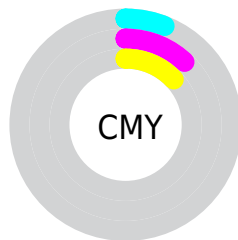
- Red (94%)
- Green (88%)
- Blue (87%)



- Red (94%)
- Yellow (88%)
- Blue (87%)



- Cyan (0%)
- Magenta (7%)
- Yellow (8%)
- Black (6%)



- Cyan (6%)
- Magenta (12%)
- Yellow (13%)

Brightness & Saturation Gradients

These gradients show how the HunterLab color 87.7821, 0.1949, 7.8910 changes by changing the brightness by 10 percent. The first figure shows a shift by +10% for each color and the second figure -10%.

Similar to the brightness gradients but the following saturation gradients show a change of the HunterLab color 87.7821, 0.1949, 7.8910 by changing the saturation by 10% instead.

87.7821, 0.1949,
7.8910

87.7821, 0.1949,
7.8910

220.2203, -5.1625,
16.2550

75.6984, 0.6081,
7.0788

113.6770, -0.7603,
9.5921

64.2247, 0.9790,
6.2898

127.4362, -1.2927,
10.4773

53.3975, 1.3013,
5.5257

141.7096, -1.8597,
11.3855

43.2582, 1.5701,
4.7866

156.4794, -2.4597,
12.3161

33.8569, 1.7788,
4.0721

171.7295, -3.0912,
13.2688

25.2568, 1.9185,
3.3810

187.4450, -3.7529,

17.5412, 1.9764,

14.2432

2.7104

203.6127, -4.4437,
15.2387

■ 10.8260, 1.9317,
2.0527

■ 1.9667, 10.8717,
1.3767

■ 87.7821, 0.1949,
7.8910

■ 87.7821, 0.1949,
7.8910

■ 81.0232, 7.0471,
11.3946

■ 94.8401, -6.3078,
4.3238

■ 74.6027, 14.2857,
14.7991

■ 98.6232, -10.1586,
3.7174

■ 68.5773, 21.9180,
18.0573

■ 63.0132, 29.9122,
21.0961

■ 57.9878, 38.1651,
23.8113

■ 53.5882, 46.4638,
26.0658

■ 49.9032, 54.4536,
27.7016

■ 47.0097, 61.6419,
28.5802

■ 44.9484, 67.4673,
28.6887

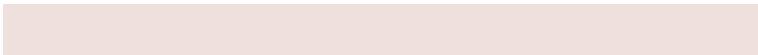
Harmonies

Analogous

The Analogous color harmony consists of three colors that are next to each other on the color wheel.



87.7840, 1.2379, 5.2282



87.7821, 0.1949, 7.8910



87.7840, -2.1603, 9.6747

Triad

The Triadic color harmony groups three colors that are evenly spaced from another and form a triangle on the color wheel.



87.7840, 0.1925, 7.8924



87.7840, -9.9289, 7.1365



87.7840, -4.2139, -0.9704

Complementary

The Complementary color scheme is a pair of colors which are on the opposite of each other on the color wheel.



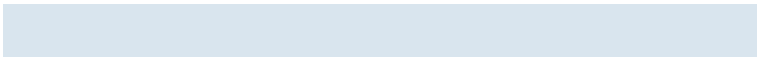
87.7821, 0.1949, 7.8910



90.6809, -9.4230, 1.8111

Split Complementary

Split-complementary colors differ from the complementary color scheme. The scheme consists of three colors, the original color and two neighbors of the complement color.



87.7840, -7.1886, -0.4174



87.7821, 0.1949, 7.8910



87.7840, -10.4620, 4.3260

Square

The Square scheme is like the rectangle color scheme, but the four colors are evenly spaced on the color wheel.



87.7840, 0.1925, 7.8924



87.7840, -7.9993, 9.2488



87.7840, -9.4654, 1.5458



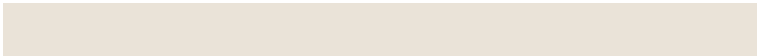
87.7840, -1.3282, 0.0596

Rectangle

The Rectangle color scheme consists of four colors that form a rectangle on the color wheel.



87.7821, 0.1949, 7.8910



87.7840, -4.1392, 10.1569



87.7840, -9.4654, 1.5458



87.7840, -5.2367, -0.9637

Sweetspot

The Sweet Spot groups the original color and five complimentary colors.



87.7840, 0.1925, 7.8924



98.4718, -3.9525, 6.2026



87.3856, 4.5662, -0.5129



45.5925, -1.8605, 2.8520

0.0000, NaN, NaN



46.2646, -2.4686, 2.5136

Same Dimension

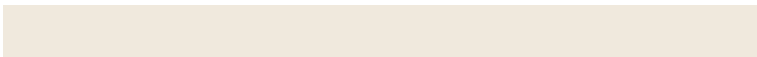
The Same Dimension uses a secret algorithm to generate beautiful new colors.



87.7840, 0.1925, 7.8924



93.2176, 1.0040, 8.8764



90.6768, -4.6956, 11.0633



40.2024, 0.5735, 3.9148



33.1983, 50.0388, 21.3326



10.1794, 12.5708, 6.4926

Inverse Universe

The Inverse Universe completely reimagines the original color for something new.



90.6809, -9.4230, 1.8111



96.7526, -10.7318, 1.4550



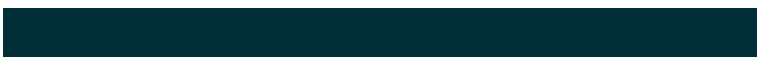
87.7262, -4.5878, -1.7404



41.8071, -4.7543, 0.5457



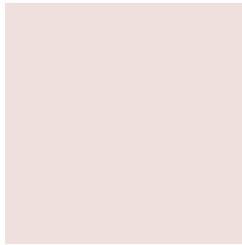
51.7142, -20.5703, -20.2329



15.2903, -6.4221, -5.2480

Previews

White Background



This preview shows how the HunterLab color 87.7821, 0.1949, 7.8910 looks on a white background.

Color Contrast Check

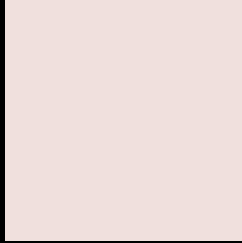
Large Text (above 18pt) WCAG AA × Fail

Any Text WCAG AA × Fail

Large Text (above 18pt) WCAG AAA × Fail

Any Text WCAG AAA × Fail

Black Background



This preview shows how the HunterLab color 87.7821, 0.1949, 7.8910 looks on a black background.

Color Contrast Check

Large Text (above 18pt) WCAG AA ✓ Pass

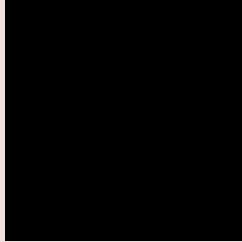
Any Text WCAG AA ✓ Pass

Large Text (above 18pt) WCAG AAA ✓ Pass

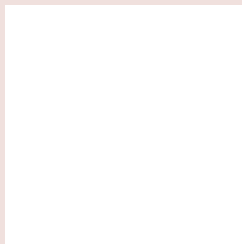
Any Text WCAG AAA ✓ Pass

If you want to check with other color combinations, try the [Color Contrast Checker](#).

HunterLab 87.7821, 0.1949, 7.8910 Background



This preview shows how black text looks on a background with the HunterLab color 87.7821, 0.1949, 7.8910.



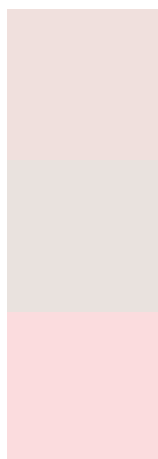
This preview shows how white text looks on a background with the HunterLab color 87.7821, 0.1949,

7.8910.

Color Blindness Simulation

Color vision deficiency is a very complex topic, and I could not describe the different causes any better than Wikipedia does, so if you want to learn more, you should check out their [article about color blindness](#).

Dichromacy



Original Color

87.7821, 0.1949, 7.8910

Protanopia

87.7441, -3.0418, 7.3175

Deuteranopia

87.7323, 6.3100, 7.4676



Tritanopia

87.6482, 5.5772, -1.1341

Trichromacy



Original Color

87.7821, 0.1949, 7.8910

Protanomaly

87.7253, -1.5182, 7.3225

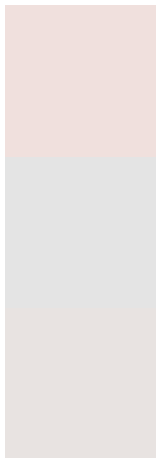
Deuteranomaly

87.6133, 4.3664, 7.2969

Tritanomaly

87.6182, 3.4596, 2.3896

Monochromacy



Original Color

87.7821, 0.1949, 7.8910

Achromatopsia

88.0808, -4.6998, 4.7856

Achromatomaly

88.0512, -3.3887, 6.2314

CSS Examples

Text

The CSS property to change the color of the text to HunterLab 87.7821, 0.1949, 7.8910 is called "color". The color property can be set on classes, ids or directly on the HTML element.

This example shows how text in the color rgb(240, 224, 221) looks like.

```
.text, #text, p{  
    color:rgb(240, 224, 221)  
}
```

If you want to add a text shadow in that color use the text-shadow property, you can generate a text shadow directly with our [CSS Text Shadow Generator](#).

Here you see how black text with a 4 pixel rgb(240, 224, 221) colored shadow looks like.

```
.shadow{ text-shadow: 4px 4px 2px rgb(240, 224, 221) }
```

Border

The CSS property to change the border of an element to HunterLab 87.7821, 0.1949, 7.8910 is called "border".

The border property can be set on classes, ids or directly on the HTML element.

This example shows the color as border, it can be applied via the CSS property "border" or "border-color".

```
.border, #border, table{ border:4px solid rgb(240, 224, 221) }
```


If only the border color should be changed use the property `border-color`.

```
.border{ border-color:rgb(240, 224, 221) }
```

If you want to add a box shadow in that color use:

Here you see how a box with a 4 pixel `rgb(240, 224, 221)` colored shadow looks like.

```
.boxshadow{ -moz-box-shadow:4px 4px 4px  
4px rgb(240, 224, 221); -webkit-box-  
shadow:4px 4px 4px 4px rgb(240, 224, 221);  
box-shadow:4px 4px 4px 4px rgb(240, 224,  
221) }
```

Background

The CSS property to change the background color of an element to HunterLab 87.7821, 0.1949, 7.8910 is called "background". The background property can be set on classes, ids or directly on the HTML element.

```
.background, #background, body{  
background: rgb(240, 224, 221) }
```

If only the background color should be changed can be used:

```
.background{ background-color: rgb(240,  
224, 221) }
```

This example shows the color as background, it is applied via the CSS property "background".

To optimize and compress your CSS code, you can use our [online CSS compressor and optimizer](#) based on csstidy. If you want to create a linear or radial gradient as background or border, check our [CSS Gradient Generator](#).

Hey! You found this booklet interesting? Support Converting Colors with the new Membership Option!

The pro membership hides all ads, plus gives you double the colors in the color bucket, and more awesome pro features!

[Learn more, Memberships starting at \\$2.50/m!](#)

**Follow me
on Twitter!**

@ConvertingColor