

Converting Colors

HunterLab(88.0691, 0.4567,
8.2210)

Have a look what the booklet for
HunterLab(88.0691, 0.4567, 8.2210)
contains.

HunterLab(87.8820, 0.5367, 8.0111)	3
<i>Conversions</i>	4
<i>Details</i>	6
<i>Harmonies</i>	12
<i>Previews</i>	24
<i>Color Blindness Simulation</i>	28
<i>CSS Examples</i>	31

Color

**HunterLab(87.8820, 0.5367,
8.0111)**

Conversions

Conversions Part 1

Format	Color
Hex	F1E0DD
RGB	241, 224, 221
RGB Percent	95%, 88%, 87%
CMY	0.0549, 0.1215, 0.1333
CMYK	0.00, 0.07, 0.08, 0.05
HSL	9°, 42%, 91%
HSV	9°, 8%, 95%
XYZ	75.9823, 77.2325, 79.3092
YIQ	228.7410, 11.0950, 2.6710

Conversions

Conversions Part 2

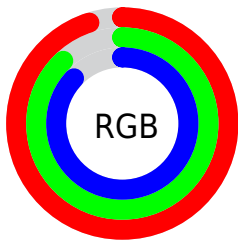
Format	Color
RYB	241, 225, 221
Decimal	15851741
CIELab	90.43, 5.30, 3.55
CIELCh	90, 6.379, 33.806
Yxy	77.2358, 0.3268, 0.3322
Android (android.graphics.Color)	4294041821 (0xFFFF1E0DD)
YUV	228.7410, -3.8163, 10.7511
Hunter-Lab	87.8820, 0.5367, 8.0111

Details

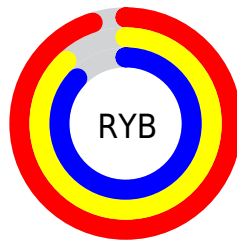
The HunterLab color $87.8820, 0.5367, 8.0111$ is a light color, and the websafe version is hex `CCCCCC`. A complement of this color would be $91.0332, -9.7559, 1.7223$, and the grayscale version is $88.4188, -4.7178, 4.8040$.

A 20% lighter version of the original color is $100.0000, -5.3358, 5.4332$, and $64.3765, 1.2414, 6.4643$ is the 20% darker color. If you saturate the color by 10%, you get $81.0483, 7.5382, 11.4746$, and if you desaturate by 10%, it is $95.0230, -6.1114, 4.4940$.

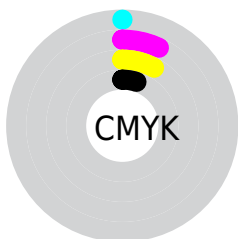
Distribution



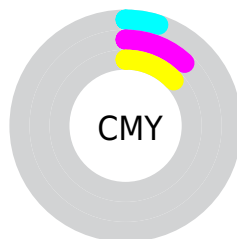
- Red (95%)
- Green (88%)
- Blue (87%)



- Red (95%)
- Yellow (88%)
- Blue (87%)



- Cyan (0%)
- Magenta (7%)
- Yellow (8%)
- Black (5%)



- Cyan (5%)
- Magenta (12%)
- Yellow (13%)

Brightness & Saturation Gradients

These gradients show how the HunterLab color 87.8820, 0.5367, 8.0111 changes by changing the brightness by 10 percent. The first figure shows a shift by +10% for each color and the second figure -10%.

Similar to the brightness gradients but the following saturation gradients show a change of the HunterLab color 87.8820, 0.5367, 8.0111 by changing the saturation by 10% instead.

87.8820, 0.5367,
8.0111

87.8820, 0.5367,
8.0111

220.3560, -4.7040,
16.4202

75.7934, 0.9343,
7.1928

113.7859, -0.3894,
9.7236

64.3147, 1.2890,
6.3973

127.5493, -0.9080,
10.6141

53.4822, 1.5941,
5.6264

141.8268, -1.4618,
11.5274

43.3371, 1.8446,
4.8800

156.6006, -2.0490,
12.4630

33.9296, 2.0337,
4.1576

171.8544, -2.6680,
13.4204

25.3228, 2.1523,
3.4578

187.5737, -3.3177,

17.5996, 2.1870,

14.3994

2.7772

203.7450, -3.9967,
15.3994

■ 10.8758, 2.1163,
2.1081

■ 2.1820, 10.4689,
1.5274

■ 87.8820, 0.5367,
8.0111

■ 87.8820, 0.5367,
8.0111

■ 81.0483, 7.5382,
11.4746

■ 95.0230, -6.1114,
4.4940

■ 74.5629, 14.9295,
14.8497

■ 98.7122, -9.8450,
3.8289

■ 68.4849, 22.7149,
18.0897

■ 62.8833, 30.8563,
21.1209

■ 57.8388, 39.2388,
23.8372

■ 53.4418, 47.6301,
26.0974

■ 49.7836, 55.6499,
27.7390

■ 46.9414, 62.7800,
28.6206

■ 44.9516, 68.4448,
28.7419

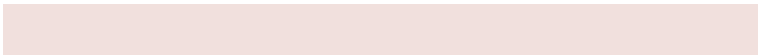
Harmonies

Analogous

The Analogous color harmony consists of three colors that are next to each other on the color wheel.



87.8839, 1.5988, 5.1756



87.8820, 0.5367, 8.0111



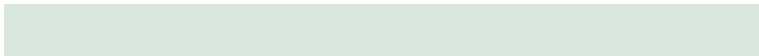
87.8839, -1.9315, 9.9291

Triad

The Triadic color harmony groups three colors that are evenly spaced from another and form a triangle on the color wheel.



87.8839, 0.5343, 8.0125



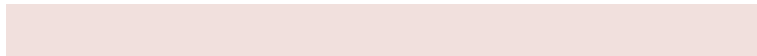
87.8839, -10.2058, 7.3557



87.8839, -4.2808, -1.3272

Complementary

The Complementary color scheme is a pair of colors which are on the opposite of each other on the color wheel.



87.8820, 0.5367, 8.0111



91.0332, -9.7559, 1.7223

Split Complementary

Split-complementary colors differ from the complementary color scheme. The scheme consists of three colors, the original color and two neighbors of the complement color.



87.8839, -7.4228, -0.6928



87.8820, 0.5367, 8.0111



87.8839, -10.8145, 4.3901

Square

The Square scheme is like the rectangle color scheme, but the four colors are evenly spaced on the color wheel.



87.8839, 0.5343, 8.0125



87.8839, -8.1279, 9.5596



87.8839, -9.8028, 1.4277



87.8839, -1.2065, -0.2761

Rectangle

The Rectangle color scheme consists of four colors that form a rectangle on the color wheel.



87.8820, 0.5367, 8.0111



87.8839, -4.0218, 10.4651



87.8839, -9.8028, 1.4277



87.8839, -5.3641, -1.3042

Sweetspot

The Sweet Spot groups the original color and five complimentary colors.



87.8839, 0.5343, 8.0125



98.4590, -3.9311, 6.1881



87.5144, 5.0575, -0.7873



45.5868, -1.8511, 2.8456

0.0000, NaN, NaN



46.2646, -2.4686, 2.5136

Same Dimension

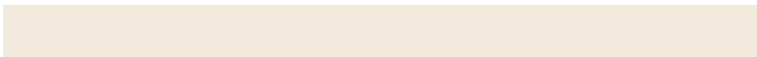
The Same Dimension uses a secret algorithm to generate beautiful new colors.



87.8839, 0.5343, 8.0125



92.4177, 1.8345, 9.1874



90.9768, -4.6980, 11.3957



40.1771, 0.6174, 3.8867



33.0934, 50.3775, 21.2739



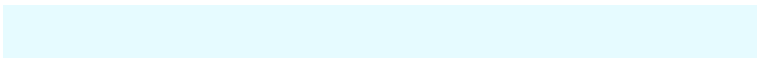
10.1320, 12.7111, 6.4658

Inverse Universe

The Inverse Universe completely reimagines the original color for something new.



91.0332, -9.7559, 1.7223



96.4680, -11.4036, 1.0968



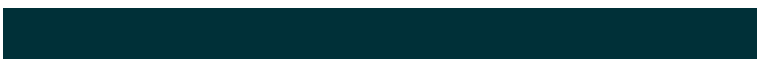
87.8697, -4.5840, -2.0879



41.8338, -4.7970, 0.5774



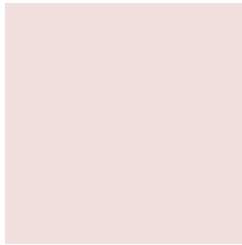
52.1802, -21.1822, -19.4944



15.4070, -6.5728, -5.0685

Previews

White Background



This preview shows how the HunterLab color 87.8820, 0.5367, 8.0111 looks on a white background.

Color Contrast Check

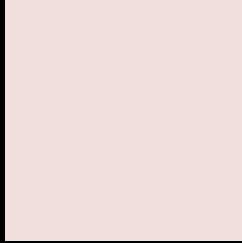
Large Text (above 18pt) WCAG AA × Fail

Any Text WCAG AA × Fail

Large Text (above 18pt) WCAG AAA × Fail

Any Text WCAG AAA × Fail

Black Background



This preview shows how the HunterLab color 87.8820, 0.5367, 8.0111 looks on a black background.

Color Contrast Check

Large Text (above 18pt) WCAG AA ✓ Pass

Any Text WCAG AA ✓ Pass

Large Text (above 18pt) WCAG AAA ✓ Pass

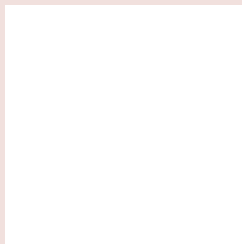
Any Text WCAG AAA ✓ Pass

If you want to check with other color combinations, try the [Color Contrast Checker](#).

HunterLab 87.8820, 0.5367, 8.0111 Background



This preview shows how black text looks on a background with the HunterLab color 87.8820, 0.5367, 8.0111.

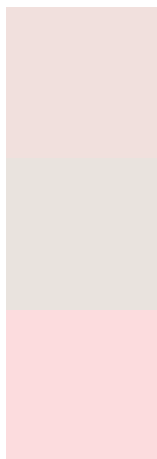


This preview shows how white text looks on a background with the HunterLab color 87.8820, 0.5367,

Color Blindness Simulation

Color vision deficiency is a very complex topic, and I could not describe the different causes any better than Wikipedia does, so if you want to learn more, you should check out their [article about color blindness](#).

Dichromacy



Original Color

87.8820, 0.5367, 8.0111

Protanopia

88.0544, -3.5622, 7.6641

Deuteranopia

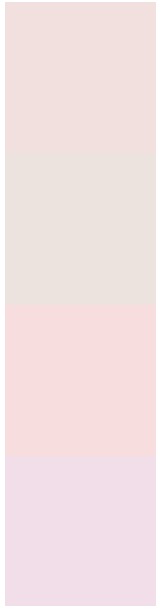
87.8384, 6.6654, 7.5956



Tritanopia

87.7494, 5.9171, -1.0021

Trichromacy



Original Color

87.8820, 0.5367, 8.0111

Protanomaly

88.0338, -2.0411, 7.6672

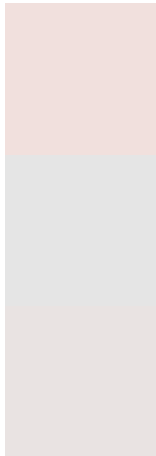
Deuteranomaly

87.7173, 4.7171, 7.4225

Tritanomaly

87.7189, 3.8001, 2.5169

Monochromacy



Original Color

87.8820, 0.5367, 8.0111

Achromatopsia

88.5177, -4.7231, 4.8093

Achromatomaly

88.1775, -2.8895, 5.9043

CSS Examples

Text

The CSS property to change the color of the text to HunterLab 87.8820, 0.5367, 8.0111 is called "color". The color property can be set on classes, ids or directly on the HTML element.

This example shows how text in the color `rgb(241, 224, 221)` looks like.

```
.text, #text, p{  
    color:rgb(241, 224, 221)  
}
```

If you want to add a text shadow in that color use the text-shadow property, you can generate a text shadow directly with our [CSS Text Shadow Generator](#).

Here you see how black text with a 4 pixel rgb(241, 224, 221) colored shadow looks like.

```
.shadow{ text-shadow: 4px 4px 2px rgb(241, 224, 221) }
```

Border

The CSS property to change the border of an element to HunterLab 87.8820, 0.5367, 8.0111 is called "border". The border property can be set on classes, ids or directly on the HTML element.

This example shows the color as border, it can be applied via the CSS property "border" or "border-color".

```
.border, #border, table{ border:4px solid rgb(241, 224, 221) }
```


If only the border color should be changed use the property `border-color`.

```
.border{ border-color:rgb(241, 224, 221) }
```

If you want to add a box shadow in that color use:

Here you see how a box with a 4 pixel `rgb(241, 224, 221)` colored shadow looks like.

```
.boxshadow{ -moz-box-shadow:4px 4px 4px  
4px rgb(241, 224, 221); -webkit-box-  
shadow:4px 4px 4px 4px rgb(241, 224, 221);  
box-shadow:4px 4px 4px 4px rgb(241, 224,  
221) }
```

Background

The CSS property to change the background color of an element to HunterLab 87.8820, 0.5367, 8.0111 is called "background". The background property can be set on classes, ids or directly on the HTML element.

```
.background, #background, body{  
background: rgb(241, 224, 221) }
```

If only the background color should be changed can be used:

```
.background{ background-color: rgb(241,  
224, 221) }
```

This example shows the color as background, it is applied via the CSS property "background".

To optimize and compress your CSS code, you can use our [online CSS compressor and optimizer](#) based on csstidy. If you want to create a linear or radial gradient as background or border, check our [CSS Gradient Generator](#).

Hey! You found this booklet interesting? Support Converting Colors with the new Membership Option!

The pro membership hides all ads, plus gives you double the colors in the color bucket, and more awesome pro features!

[Learn more, Memberships starting at \\$2.50/m!](#)

**Follow me
on Twitter!**

@ConvertingColor