

Converting Colors

HunterLab(88.2326, 1.3020,
4.8317)

Have a look what the booklet for
HunterLab(88.2326, 1.3020, 4.8317)
contains.

HunterLab(88.3047, 0.8405, 5.1458)	3
<i>Conversions</i>	4
<i>Details</i>	6
<i>Harmonies</i>	12
<i>Previews</i>	24
<i>Color Blindness Simulation</i>	28
<i>CSS Examples</i>	31

Color

**HunterLab(88.3047, 0.8405,
5.1458)**

Conversions

Conversions Part 1

Format	Color
Hex	F0E1E4
RGB	240, 225, 228
RGB Percent	94%, 88%, 89%
CMY	0.0588, 0.1176, 0.1059
CMYK	0.00, 0.06, 0.05, 0.06
HSL	348°, 33%, 91%
HSV	348°, 6%, 94%
XYZ	76.8640, 77.9772, 84.3988
YIQ	229.8270, 7.9770, 4.1130

Conversions

Conversions Part 2

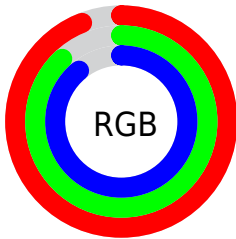
Format	Color
R_{YB}	240, 225, 228
Decimal	15786468
CIE _{Lab}	90.77, 5.62, 0.37
CIE _{LCh}	91, 5.631, 3.739
Yxy	77.9806, 0.3213, 0.3259
Android (android.graphics.Color)	4293976548 (0xFFFF0E1E4)
YUV	229.8270, -0.9007, 8.9217
Hunter-Lab	88.3047, 0.8405, 5.1458

Details

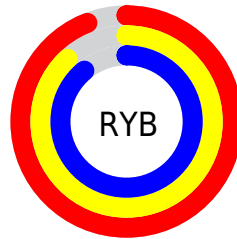
The HunterLab color $88.3047, 0.8405, 5.1458$ is a light color, and the websafe version is hex `CCCCCC`. A complement of this color would be $91.8935, -10.2716, 4.7477$, and the grayscale version is $88.8823, -4.7425, 4.8291$.

A 20% lighter version of the original color is $100.0000, -5.3358, 5.4332$, and $64.7742, 1.5170, 3.7522$ is the 20% darker color. If you saturate the color by 10%, you get $80.5573, 10.3803, 5.5214$, and if you desaturate by 10%, it is $96.4410, -8.4241, 5.0781$.

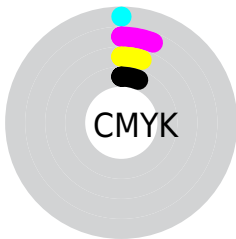
Distribution



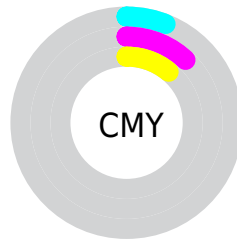
- Red (94%)
- Green (88%)
- Blue (89%)



- Red (94%)
- Yellow (88%)
- Blue (89%)



- Cyan (0%)
- Magenta (6%)
- Yellow (5%)
- Black (6%)



- Cyan (6%)
- Magenta (12%)
- Yellow (11%)

Brightness & Saturation Gradients

These gradients show how the HunterLab color 88.3047, 0.8405, 5.1458 changes by changing the brightness by 10 percent. The first figure shows a shift by +10% for each color and the second figure -10%.

Similar to the brightness gradients but the following saturation gradients show a change of the HunterLab color 88.3047, 0.8405, 5.1458 by changing the saturation by 10% instead.

88.3047, 0.8405,
5.1458

88.3047, 0.8405,
5.1458

220.9301, -4.3012,
12.4885

76.1958, 1.2252,
4.4716

114.2466, -0.0610,
6.5899

64.6957, 1.5661,
3.8284

128.0278, -0.5680,
7.3544

53.8405, 1.8569,
3.2192

142.3225, -1.1105,
8.1464

43.6712, 2.0923,
2.6461

157.1129, -1.6868,
8.9649

34.2376, 2.2653,
2.1115

172.3828, -2.2953,
9.8091

25.6023, 2.3666,
1.6184

188.1177, -2.9346,

17.8473, 2.3826,

10.6782

1.1705

204.3042, -3.6036,
11.5715

■ 11.0869, 2.2916,
0.7730

■ 2.9216, 8.2242,
0.6800

■ 88.3047, 0.8405,
5.1458

■ 88.3047, 0.8405,
5.1458

■ 80.5573, 10.3803,
5.5214

■ 96.4410, -8.4241,
5.0781

■ 73.2611, 20.1962,
6.2609

■ 98.6233, -10.1585,
3.7174

■ 66.5031, 30.2243,
7.4318

■ 60.3884, 40.3020,
9.0955

■ 55.0409, 50.1049,
11.2876

■ 50.5946, 59.0943,
13.9824

■ 47.1727, 66.5360,
17.0508

■ 44.8472, 71.6807,
20.2404

■ 43.5870, 74.1277,
23.2128

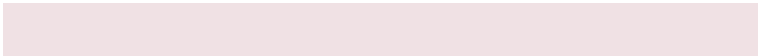
Harmonies

Analogous

The Analogous color harmony consists of three colors that are next to each other on the color wheel.



88.3066, 0.2694, 2.4607



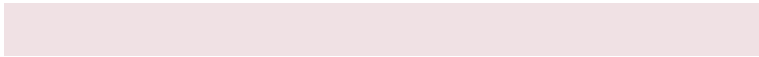
88.3047, 0.8405, 5.1458



88.3066, -0.0969, 7.6632

Triad

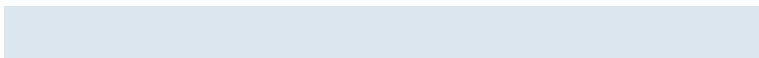
The Triadic color harmony groups three colors that are evenly spaced from another and form a triangle on the color wheel.



88.3066, 0.8382, 5.1473



88.3066, -7.7502, 9.0472



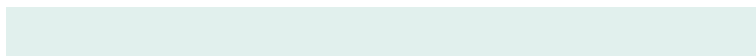
88.3066, -7.1365, -0.0144

Complementary

The Complementary color scheme is a pair of colors which are on the opposite of each other on the color wheel.



88.3047, 0.8405, 5.1458



91.8935, -10.2716, 4.7477

Split Complementary

Split-complementary colors differ from the complementary color scheme. The scheme consists of three colors, the original color and two neighbors of the complement color.



88.3066, -9.2432, 1.8516



88.3047, 0.8405, 5.1458



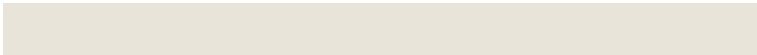
88.3066, -9.5943, 7.0902

Square

The Square scheme is like the rectangle color scheme, but the four colors are evenly spaced on the color wheel.



88.3066, 0.8382, 5.1473



88.3066, -5.0749, 9.8691



88.3066, -10.1373, 4.4649



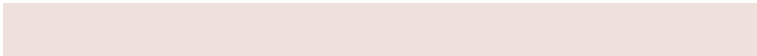
88.3066, -4.3576, -0.5743

Rectangle

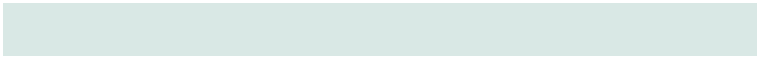
The Rectangle color scheme consists of four colors that form a rectangle on the color wheel.



88.3047, 0.8405, 5.1458



88.3066, -1.4404, 8.9217



88.3066, -10.1373, 4.4649



88.3066, -7.9456, 0.4838

Sweetspot

The Sweet Spot groups the original color and five complimentary colors.



88.3066, 0.8382, 5.1473



98.2492, -3.3464, 5.4462



88.4024, 1.9454, -0.7833



45.4945, -1.5939, 2.5192

0.0000, NaN, NaN



46.2646, -2.4686, 2.5136

Same Dimension

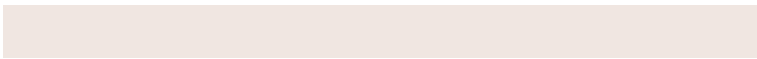
The Same Dimension uses a secret algorithm to generate beautiful new colors.



88.3066, 0.8382, 5.1473



93.9410, 1.6790, 5.5327



89.5993, -2.0321, 8.0349



40.4532, 0.9705, 2.4009



32.0509, 55.2986, 17.5284



9.3182, 16.2222, 3.9709

Inverse Universe

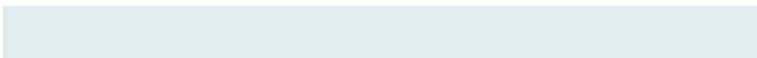
The Inverse Universe completely reimagines the original color for something new.



88.3066, 0.8382, 5.1473



93.9410, 1.6790, 5.5327



90.5565, -7.4171, 1.6953



40.4532, 0.9705, 2.4009



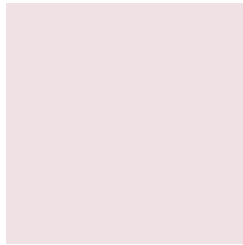
32.0509, 55.2986, 17.5284



9.3182, 16.2222, 3.9709

Previews

White Background



This preview shows how the HunterLab color 88.3047, 0.8405, 5.1458 looks on a white background.

Color Contrast Check

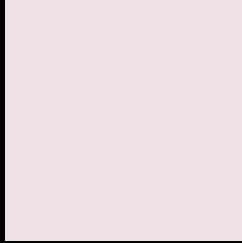
Large Text (above 18pt) WCAG AA × Fail

Any Text WCAG AA × Fail

Large Text (above 18pt) WCAG AAA × Fail

Any Text WCAG AAA × Fail

Black Background



This preview shows how the HunterLab color 88.3047, 0.8405, 5.1458 looks on a black background.

Color Contrast Check

Large Text (above 18pt) WCAG AA ✓ Pass

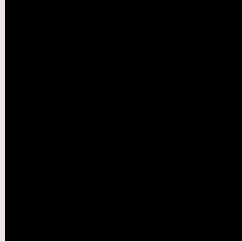
Any Text WCAG AA ✓ Pass

Large Text (above 18pt) WCAG AAA ✓ Pass

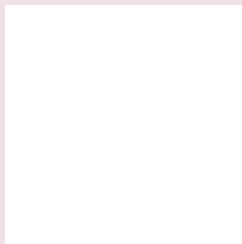
Any Text WCAG AAA ✓ Pass

If you want to check with other color combinations, try the [Color Contrast Checker](#).

HunterLab 88.3047, 0.8405, 5.1458 Background



This preview shows how black text looks on a background with the HunterLab color 88.3047, 0.8405, 5.1458.



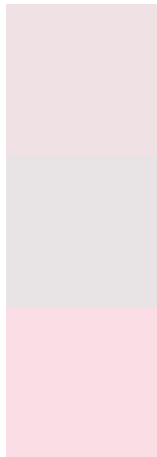
This preview shows how white text looks on a background with the HunterLab color 88.3047, 0.8405,

5.1458.

Color Blindness Simulation

Color vision deficiency is a very complex topic, and I could not describe the different causes any better than Wikipedia does, so if you want to learn more, you should check out their [article about color blindness](#).

Dichromacy



Original Color

88.3047, 0.8405, 5.1458

Protanopia

88.1766, -2.7044, 4.4424

Deuteranopia

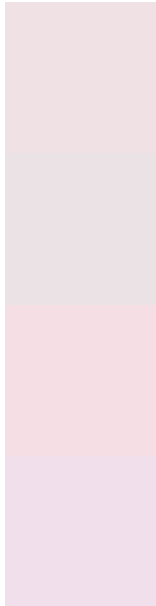
88.1442, 6.5877, 4.5669



Tritanopia

88.3196, 4.8684, -1.3586

Trichromacy



Original Color

88.3047, 0.8405, 5.1458

Protanomaly

88.1544, -1.1908, 4.4427

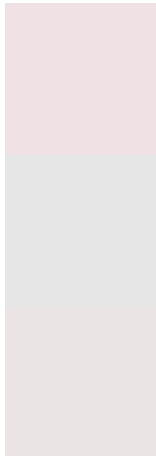
Deuteranomaly

88.0298, 4.6579, 4.3978

Tritanomaly

88.3562, 3.0993, 1.2478

Monochromacy



Original Color

88.3047, 0.8405, 5.1458

Achromatopsia

88.9549, -4.7464, 4.8331

Achromatomaly

88.6772, -2.5696, 5.0346

CSS Examples

Text

The CSS property to change the color of the text to HunterLab 88.3047, 0.8405, 5.1458 is called "color". The color property can be set on classes, ids or directly on the HTML element.

This example shows how text in the color `rgb(240, 225, 228)` looks like.

```
.text, #text, p{  
    color:rgb(240, 225, 228)  
}
```

If you want to add a text shadow in that color use the text-shadow property, you can generate a text shadow directly with our [CSS Text Shadow Generator](#).

Here you see how black text with a 4 pixel rgb(240, 225, 228) colored shadow looks like.

```
.shadow{ text-shadow: 4px 4px 2px rgb(240, 225, 228) }
```

Border

The CSS property to change the border of an element to HunterLab 88.3047, 0.8405, 5.1458 is called "border". The border property can be set on classes, ids or directly on the HTML element.

This example shows the color as border, it can be applied via the CSS property "border" or "border-color".

```
.border, #border, table{ border:4px solid rgb(240, 225, 228) }
```


If only the border color should be changed use the property `border-color`.

```
.border{ border-color:rgb(240, 225, 228) }
```

If you want to add a box shadow in that color use:

Here you see how a box with a 4 pixel `rgb(240, 225, 228)` colored shadow looks like.

```
.boxshadow{ -moz-box-shadow:4px 4px 4px  
4px rgb(240, 225, 228); -webkit-box-  
shadow:4px 4px 4px 4px rgb(240, 225, 228);  
box-shadow:4px 4px 4px 4px rgb(240, 225,  
228) }
```

Background

The CSS property to change the background color of an element to HunterLab 88.3047, 0.8405, 5.1458 is called "background". The background property can be set on classes, ids or directly on the HTML element.

```
.background, #background, body{  
background: rgb(240, 225, 228) }
```

If only the background color should be changed can be used:

```
.background{ background-color: rgb(240,  
225, 228) }
```

This example shows the color as background, it is applied via the CSS property "background".

To optimize and compress your CSS code, you can use our [online CSS compressor and optimizer](#) based on csstidy. If you want to create a linear or radial gradient as background or border, check our [CSS Gradient Generator](#).

Hey! You found this booklet interesting? Support Converting Colors with the new Membership Option!

The pro membership hides all ads, plus gives you double the colors in the color bucket, and more awesome pro features!

[Learn more, Memberships starting at \\$2.50/m!](#)

**Follow me
on Twitter!**

@ConvertingColor