

Converting Colors

HunterLab(9.6593, 8.5720,
3.5705)

Have a look what the booklet for
HunterLab(9.6593, 8.5720, 3.5705)
contains.

HunterLab(9.6261, 8.4291, 3.5202)	3
<i>Conversions</i>	4
<i>Details</i>	6
<i>Harmonies</i>	12
<i>Previews</i>	24
<i>Color Blindness Simulation</i>	28
<i>CSS Examples</i>	31

Color

**HunterLab(9.6261, 8.4291,
3.5202)**

Conversions

Conversions Part 1

Format	Color
Hex	2E0E0E
RGB	46, 14, 14
RGB Percent	18%, 5%, 5%
CMY	0.8196, 0.9451, 0.9451
CMYK	0.00, 0.70, 0.70, 0.82
HSL	0°, 53%, 12%
HSV	0°, 70%, 18%
XYZ	1.3630, 0.9266, 0.5225
YIQ	23.5680, 19.0720, 6.7840

Conversions

Conversions Part 2

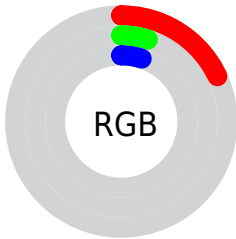
Format	Color
R_YB	46, 14, 14
Decimal	3018254
CIE Lab	8.36, 16.46, 6.95
CIE LCh	8, 17.862, 22.894
Yxy	0.9267, 0.4847, 0.3295
Android (android.graphics.Color)	4281208334 (0xFF2E0E0E)
YUV	23.5680, -4.7170, 19.6729
Hunter-Lab	9.6261, 8.4291, 3.5202

Details

The HunterLab color **9.6261, 8.4291, 3.5202** is a dark color, and the websafe version is hex **330000**. A complement of this color would be **14.9815, -6.5446, -1.1123**, and the grayscale version is **9.4370, -0.5035, 0.5127**.

A 20% lighter version of the original color is **23.6672, 10.0025, 5.0615**, and 0.0000, NaN, NaN is the 20% darker color. If you saturate the color by 10%, you get **8.9752, 9.7554, 3.9181**, and if you desaturate by 10%, it is **10.3869, 7.0344, 3.1081**.

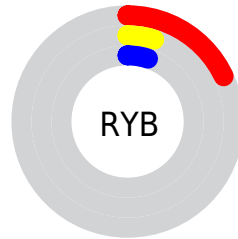
Distribution



Red (18%)

Green (5%)

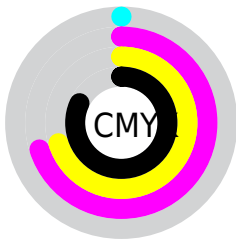
Blue (5%)



Red (18%)

Yellow (5%)

Blue (5%)

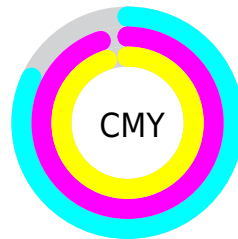


Cyan (0%)

Magenta (70%)

Yellow (70%)

Black (82%)



Cyan (82%)

Magenta (95%)

Yellow (95%)

Brightness & Saturation Gradients

These gradients show how the HunterLab color 9.6261, 8.4291, 3.5202 changes by changing the brightness by 10 percent. The first figure shows a shift by +10% for each color and the second figure -10%.

Similar to the brightness gradients but the following saturation gradients show a change of the HunterLab color 9.6261, 8.4291, 3.5202 by changing the saturation by 10% instead.

■ 9.6261, 8.4291,
3.5202

■ 9.6261, 8.4291,
3.5202

■ 97.8932, 11.9649,
11.7774

0.0000, INF, NaN

0.0000, NaN, NaN

■ 23.6523, 10.0127,
5.0823

0.0000, NaN, NaN

■ 32.0843, 10.5777,
6.0200

0.0000, NaN, NaN

■ 41.3321, 11.0245,
6.9550

0.0000, NaN, NaN

0.0000, NaN, NaN

■ 51.3293, 11.3705,
7.8950

0.0000, NaN, NaN

■ 62.0235, 11.6285,
8.8449

0.0000, NaN, NaN

0.0000, NaN, NaN

■ 73.3718, 11.8086,

9.8075

■ 85.3385, 11.9186,
10.7846

■ 9.6261, 8.4291,
3.5202

■ 9.6261, 8.4291,
3.5202

■ 8.9752, 9.7554,
3.9181

■ 10.3869, 7.0344,
3.1081

■ 8.3403, 11.1967,
4.3554

■ 11.2442, 5.6237,
2.6972

■ 7.6529, 12.9639,
4.8982

■ 12.1853, 4.2300,
2.2980

■ 7.6216, 13.0504,
4.9249

■ 13.1987, 2.8720,
1.9160

■ 14.2744, 1.5581,
1.5532

■ 15.4041, 0.2899,
1.2097

■ 16.5811, -0.9343,
0.8843

■ 17.7996, -2.1181,
0.5754

■ 19.0552, -3.2659,
0.2813

Harmonies

Analogous

The Analogous color harmony consists of three colors that are next to each other on the color wheel.



9.6264, 9.2294, -0.5091



9.6261, 8.4291, 3.5202



9.6264, 5.0467, 6.6623

Triad

The Triadic color harmony groups three colors that are evenly spaced from another and form a triangle on the color wheel.



9.6264, 8.4284, 3.5204



9.6264, -6.9734, 5.1683



9.6264, -1.5252, -11.1284

Complementary

The Complementary color scheme is a pair of colors which are on the opposite of each other on the color wheel.



9.6261, 8.4291, 3.5202



14.9815, -6.5446, -1.1123

Split Complementary

Split-complementary colors differ from the complementary color scheme. The scheme consists of three colors, the original color and two neighbors of the complement color.



9.6264, -5.4029, -8.1845



9.6261, 8.4291, 3.5202



9.6264, -8.5484, 1.4796

Square

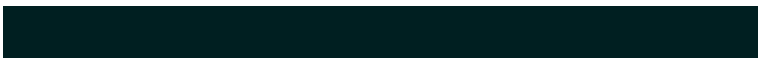
The Square scheme is like the rectangle color scheme, but the four colors are evenly spaced on the color wheel.



9.6264, 8.4284, 3.5204



9.6264, -3.6705, 6.7385



9.6264, -7.9736, -3.0982



9.6264, 2.9470, -10.0129

Rectangle

The Rectangle color scheme consists of four colors that form a rectangle on the color wheel.



9.6261, 8.4291, 3.5202



9.6264, 2.0616, 6.7385



9.6264, -7.9736, -3.0982



9.6264, -2.9032, -10.5488

Sweetspot

The Sweet Spot groups the original color and five complimentary colors.



9.6264, 8.4284, 3.5204



17.6047, 2.3759, 2.0679



10.4507, 12.0608, -8.0133



9.7858, 1.3466, 1.1581



58.5142, -3.1222, 3.1792



11.5809, -0.6179, 0.6292

Same Dimension

The Same Dimension uses a secret algorithm to generate beautiful new colors.



9.6264, 8.4284, 3.5204



10.7587, 13.4559, 5.2872



12.4141, 2.2916, 5.7053



8.7074, 0.0603, 0.6490



14.1843, 24.2891, 9.1655



37.8504, 64.8182, 24.4580

Inverse Universe

The Inverse Universe completely reimagines the original color for something new.



14.9815, -6.5446, -1.1123



18.6233, -9.0979, -1.7055



11.0416, -0.9173, -7.0917



9.1003, -0.9878, 0.3261



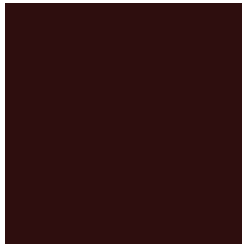
27.2953, -14.4697, -2.8808



72.8380, -38.6125, -7.6879

Previews

White Background



This preview shows how the HunterLab color 9.6261, 8.4291, 3.5202 looks on a white background.

Color Contrast Check

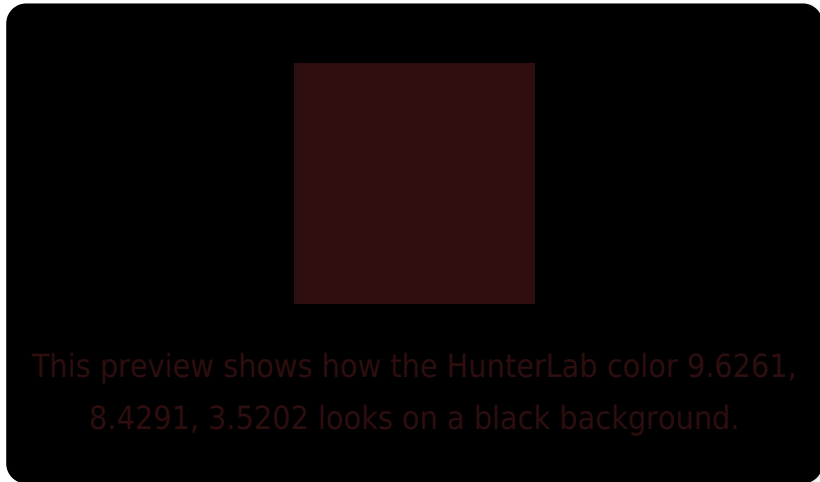
Large Text (above 18pt) WCAG AA ✓ Pass

Any Text WCAG AA ✓ Pass

Large Text (above 18pt) WCAG AAA ✓ Pass

Any Text WCAG AAA ✓ Pass

Black Background



Color Contrast Check

Large Text (above 18pt) WCAG AA × Fail

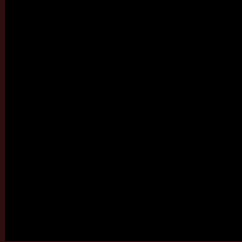
Any Text WCAG AA × Fail

Large Text (above 18pt) WCAG AAA × Fail

Any Text WCAG AAA × Fail

If you want to check with other color combinations, try the [Color Contrast Checker](#).

HunterLab 9.6261, 8.4291, 3.5202 Background



This preview shows how black text looks on a background with the HunterLab color 9.6261, 8.4291, 3.5202.



This preview shows how white text looks on a background with the HunterLab color 9.6261, 8.4291,

Color Blindness Simulation

Color vision deficiency is a very complex topic, and I could not describe the different causes any better than Wikipedia does, so if you want to learn more, you should check out their [article about color blindness](#).

Dichromacy



Original Color

9.6261, 8.4291, 3.5202

Protanopia

10.1456, -0.9094, 2.8915

Deuteranopia

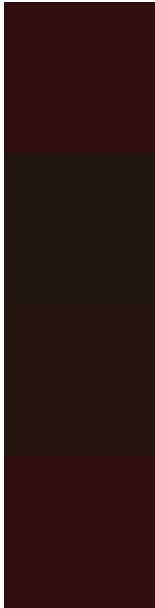
9.9342, 0.3795, 4.0522



Tritanopia

9.6406, 8.4947, 3.3098

Trichromacy



Original Color

9.6261, 8.4291, 3.5202

Protanomaly

9.8571, 2.3299, 2.9248

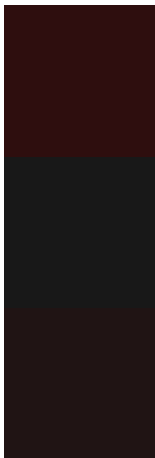
Deuteranomaly

9.6056, 3.3664, 3.6276

Tritanomaly

9.6406, 8.4947, 3.3098

Monochromacy



Original Color

9.6261, 8.4291, 3.5202

Achromatopsia

9.5572, -0.5099, 0.5193

Achromatomaly

9.2623, 2.5249, 1.5151

CSS Examples

Text

The CSS property to change the color of the text to HunterLab 9.6261, 8.4291, 3.5202 is called "color". The color property can be set on classes, ids or directly on the HTML element.

This example shows how text in the color `rgb(46, 14, 14)` looks like.

```
.text, #text, p{  
    color:rgb(46, 14, 14)  
}
```

If you want to add a text shadow in that color use the text-shadow property, you can generate a text shadow directly with our [CSS Text Shadow Generator](#).

Here you see how black text with a 4 pixel rgb(46, 14, 14) colored shadow looks like.

```
.shadow{ text-shadow: 4px 4px 2px rgb(46, 14, 14) }
```

Border

The CSS property to change the border of an element to HunterLab 9.6261, 8.4291, 3.5202 is called "border".

The border property can be set on classes, ids or directly on the HTML element.

This example shows the color as border, it can be applied via the CSS property "border" or "border-color".

```
.border, #border, table{ border:4px solid rgb(46, 14, 14) }
```


If only the border color should be changed use the property `border-color`.

```
.border{ border-color:rgb(46, 14, 14) }
```

If you want to add a box shadow in that color use:

Here you see how a box with a 4 pixel `rgb(46, 14, 14)` colored shadow looks like.

```
.boxshadow{ -moz-box-shadow:4px 4px 4px  
4px rgb(46, 14, 14); -webkit-box-  
shadow:4px 4px 4px 4px rgb(46, 14, 14);  
box-shadow:4px 4px 4px 4px rgb(46, 14, 14)  
}
```

Background

The CSS property to change the background color of an element to HunterLab 9.6261, 8.4291, 3.5202 is called "background". The background property can be set on classes, ids or directly on the HTML element.

```
.background, #background, body{  
background: rgb(46, 14, 14) }
```

If only the background color should be changed can be used:

```
.background{ background-color: rgb(46, 14,  
14) }
```

This example shows the color as background, it is applied via the CSS property "background".

To optimize and compress your CSS code, you can use our [online CSS compressor and optimizer](#) based on csstidy. If you want to create a linear or radial gradient as background or border, check our [CSS Gradient Generator](#).

Hey! You found this booklet interesting? Support Converting Colors with the new Membership Option!

The pro membership hides all ads, plus gives you double the colors in the color bucket, and more awesome pro features!

[Learn more, Memberships starting at \\$2.50/m!](#)

**Follow me
on Twitter!**

@ConvertingColor