

Converting Colors

HunterLab(9.8767, 7.7472,
2.5232)

Have a look what the booklet for
HunterLab(9.8767, 7.7472, 2.5232)
contains.

HunterLab(9.8767, 7.7472, 2.5232)	3
<i>Conversions</i>	4
<i>Details</i>	6
<i>Harmonies</i>	12
<i>Previews</i>	24
<i>Color Blindness Simulation</i>	28
<i>CSS Examples</i>	31

Color

**HunterLab(9.8767, 7.7472,
2.5232)**

Conversions

Conversions Part 1

Format	Color
Hex	2D1013
RGB	45, 16, 19
RGB Percent	18%, 6%, 7%
CMY	0.8235, 0.9372, 0.9255
CMYK	0.00, 0.64, 0.58, 0.82
HSL	354°, 48%, 12%
HSV	354°, 64%, 18%
XYZ	1.3850, 0.9755, 0.7314
YIQ	25.0130, 16.3210, 7.0810

Conversions

Conversions Part 2

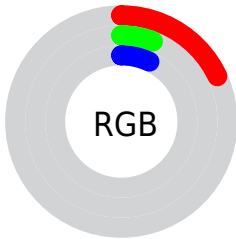
Format	Color
R_{YB}	45, 16, 19
Decimal	2953235
CIE Lab	8.79, 15.29, 4.69
CIE LCh	9, 15.993, 17.041
Yxy	0.9755, 0.4479, 0.3155
Android (android.graphics.Color)	4281143315 (0xFF2D1013)
YUV	25.0130, -2.9644, 17.5286
Hunter-Lab	9.8767, 7.7472, 2.5232

Details

The HunterLab color **9.8767, 7.7472, 2.5232** is a dark color, and the websafe version is hex **330000**. A complement of this color would be **14.6770, -6.5898, 0.0790**, and the grayscale version is **9.8691, -0.5266, 0.5362**.

A 20% lighter version of the original color is **24.0666, 9.2121, 4.1146**, and 0.0000, NaN, NaN is the 20% darker color. If you saturate the color by 10%, you get **9.1832, 9.0757, 2.9080**, and if you desaturate by 10%, it is **10.6682, 6.3669, 2.1698**.

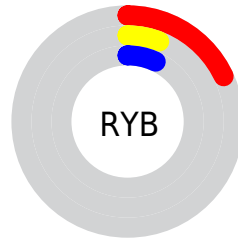
Distribution



 Red (18%)

 Green (6%)

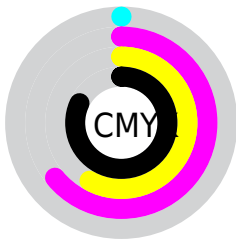
 Blue (7%)



 Red (18%)

 Yellow (6%)

 Blue (7%)

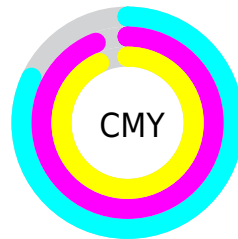


 Cyan (0%)

 Magenta (64%)

 Yellow (58%)

 Black (82%)



 Cyan (82%)

 Magenta (94%)

 Yellow (93%)

Brightness & Saturation Gradients

These gradients show how the HunterLab color 9.8767, 7.7472, 2.5232 changes by changing the brightness by 10 percent. The first figure shows a shift by +10% for each color and the second figure -10%.

Similar to the brightness gradients but the following saturation gradients show a change of the HunterLab color 9.8767, 7.7472, 2.5232 by changing the saturation by 10% instead.

■ 9.8767, 7.7472,
2.5232

■ 9.8767, 7.7472,
2.5232

■ 98.4343, 10.7099,
9.7666

0.0000, INF, NaN

0.0000, NaN, NaN

■ 23.9898, 9.1768,
3.9582

0.0000, NaN, NaN

■ 32.4577, 9.6712,
4.7336

0.0000, NaN, NaN

■ 41.7383, 10.0519,
5.5233

0.0000, NaN, NaN

0.0000, NaN, NaN

■ 51.7659, 10.3355,
6.3310

0.0000, NaN, NaN


■ 62.4884, 10.5345,
7.1584


0.0000, NaN, NaN


0.0000, NaN, NaN


■ 73.8634, 10.6585,

8.0066


 85.8555, 10.7149,
8.8759


 9.8767, 7.7472,
2.5232


 9.8767, 7.7472,
2.5232


 9.1832, 9.0757,
2.9080


 10.6682, 6.3669,
2.1698

 8.5667, 10.3911,
3.2840


 11.5442, 4.9780,
1.8534

 7.9203, 11.9923,
3.6080

 12.4936, 3.6056,
1.5755

 7.5372, 13.0429,
3.8217

 13.5064, 2.2633,
1.3344

 14.5742, 0.9570,
1.1271

■ 15.6899, -0.3122,
0.9500

■ 16.8478, -1.5461,
0.7996

■ 18.0430, -2.7475,
0.6723

■ 19.2717, -3.9201,
0.5653

Harmonies

Analogous

The Analogous color harmony consists of three colors that are next to each other on the color wheel.



9.8770, 7.9282, -1.2063



9.8767, 7.7472, 2.5232



9.8770, 5.1419, 5.4685

Triad

The Triadic color harmony groups three colors that are evenly spaced from another and form a triangle on the color wheel.



9.8770, 7.7465, 2.5234



9.8770, -5.7407, 5.1305



9.8770, -2.1593, -9.2926

Complementary

The Complementary color scheme is a pair of colors which are on the opposite of each other on the color wheel.



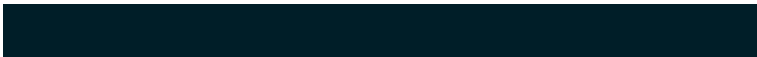
9.8767, 7.7472, 2.5232



14.6770, -6.5898, 0.0790

Split Complementary

Split-complementary colors differ from the complementary color scheme. The scheme consists of three colors, the original color and two neighbors of the complement color.



9.8770, -5.3853, -6.2674



9.8767, 7.7472, 2.5232



9.8770, -7.4531, 2.0617

Square

The Square scheme is like the rectangle color scheme, but the four colors are evenly spaced on the color wheel.



9.8770, 7.7465, 2.5234



9.8770, -2.6447, 6.9139



9.8770, -7.3230, -1.7988



9.8770, 1.7760, -9.0481

Rectangle

The Rectangle color scheme consists of four colors that form a rectangle on the color wheel.



9.8767, 7.7472, 2.5232



9.8770, 2.5828, 6.7367



9.8770, -7.3230, -1.7988



9.8770, -3.3293, -8.5865

Sweetspot

The Sweet Spot groups the original color and five complimentary colors.



9.8770, 7.7465, 2.5234



17.9215, 2.1735, 1.5925



10.2191, 10.0333, -7.9314



9.9380, 1.2644, 0.8956



58.5142, -3.1222, 3.1792



11.5809, -0.6179, 0.6292

Same Dimension

The Same Dimension uses a secret algorithm to generate beautiful new colors.



9.8770, 7.7465, 2.5234



11.2422, 12.7756, 4.0969



11.7668, 3.2302, 4.8368



8.7124, 0.0874, 0.5775



14.2530, 24.5465, 8.1415



37.9272, 65.1058, 23.3121

Inverse Universe

The Inverse Universe completely reimagines the original color for something new.



9.8770, 7.7465, 2.5234



11.2422, 12.7756, 4.0969



11.9878, -2.2753, -4.9318



8.7124, 0.0874, 0.5775



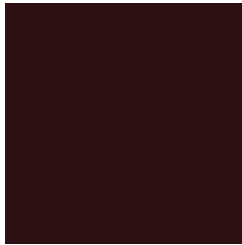
14.2530, 24.5465, 8.1415



37.9272, 65.1058, 23.3121

Previews

White Background



This preview shows how the HunterLab color 9.8767, 7.7472, 2.5232 looks on a white background.

Color Contrast Check

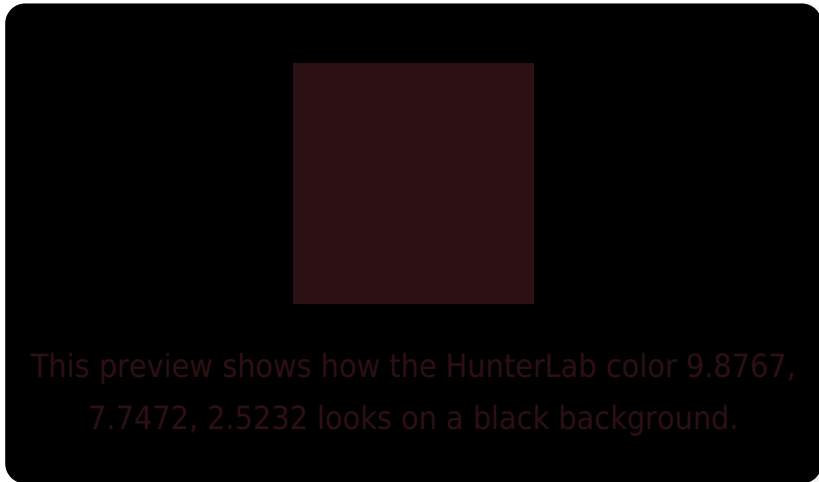
Large Text (above 18pt) WCAG AA ✓ Pass

Any Text WCAG AA ✓ Pass

Large Text (above 18pt) WCAG AAA ✓ Pass

Any Text WCAG AAA ✓ Pass

Black Background



Color Contrast Check

Large Text (above 18pt) WCAG AA × Fail

Any Text WCAG AA × Fail

Large Text (above 18pt) WCAG AAA × Fail

Any Text WCAG AAA × Fail

If you want to check with other color combinations, try the [Color Contrast Checker](#).

HunterLab 9.8767, 7.7472, 2.5232 Background



This preview shows how black text looks on a background with the HunterLab color 9.8767, 7.7472, 2.5232.

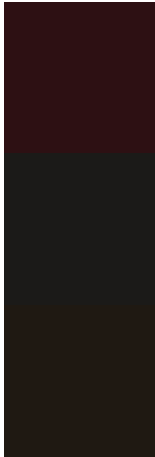


This preview shows how white text looks on a background with the HunterLab color 9.8767, 7.7472,

Color Blindness Simulation

Color vision deficiency is a very complex topic, and I could not describe the different causes any better than Wikipedia does, so if you want to learn more, you should check out their [article about color blindness](#).

Dichromacy



Original Color

9.8767, 7.7472, 2.5232

Protanopia

10.1870, -0.5457, 1.2381

Deuteranopia

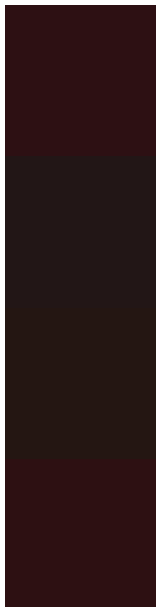
10.1501, 0.2083, 2.9153



Tritanopia

9.8435, 7.5929, 3.0042

Trichromacy



Original Color

9.8767, 7.7472, 2.5232

Protanomaly

9.8581, 2.5104, 1.5533

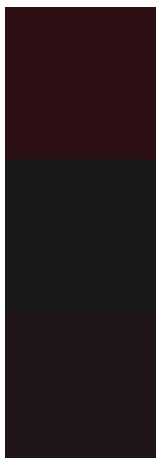
Deuteranomaly

9.9627, 2.6973, 2.7805

Tritanomaly

9.8597, 7.6685, 2.7685

Monochromacy



Original Color

9.8767, 7.7472, 2.5232

Achromatopsia

9.8596, -0.5261, 0.5357

Achromatomaly

9.7096, 2.0766, 1.0695

CSS Examples

Text

The CSS property to change the color of the text to HunterLab 9.8767, 7.7472, 2.5232 is called "color". The color property can be set on classes, ids or directly on the HTML element.

This example shows how text in the color `rgb(45, 16, 19)` looks like.

```
.text, #text, p{  
    color:rgb(45, 16, 19)  
}
```

If you want to add a text shadow in that color use the text-shadow property, you can generate a text shadow directly with our [CSS Text Shadow Generator](#).

Here you see how black text with a 4 pixel rgb(45, 16, 19) colored shadow looks like.

```
.shadow{ text-shadow: 4px 4px 2px rgb(45, 16, 19) }
```

Border

The CSS property to change the border of an element to HunterLab 9.8767, 7.7472, 2.5232 is called "border".

The border property can be set on classes, ids or directly on the HTML element.

This example shows the color as border, it can be applied via the CSS property "border" or "border-color".

```
.border, #border, table{ border:4px solid rgb(45, 16, 19) }
```


If only the border color should be changed use the property `border-color`.

```
.border{ border-color:rgb(45, 16, 19) }
```

If you want to add a box shadow in that color use:

Here you see how a box with a 4 pixel `rgb(45, 16, 19)` colored shadow looks like.

```
.boxshadow{ -moz-box-shadow:4px 4px 4px  
4px rgb(45, 16, 19); -webkit-box-  
shadow:4px 4px 4px 4px rgb(45, 16, 19);  
box-shadow:4px 4px 4px 4px rgb(45, 16, 19)  
}
```

Background

The CSS property to change the background color of an element to HunterLab 9.8767, 7.7472, 2.5232 is called "background". The background property can be set on classes, ids or directly on the HTML element.

```
.background, #background, body{  
background: rgb(45, 16, 19) }
```

If only the background color should be changed can be used:

```
.background{ background-color: rgb(45, 16,  
19) }
```

This example shows the color as background, it is applied via the CSS property "background".

To optimize and compress your CSS code, you can use our [online CSS compressor and optimizer](#) based on csstidy. If you want to create a linear or radial gradient as background or border, check our [CSS Gradient Generator](#).

Hey! You found this booklet interesting? Support Converting Colors with the new Membership Option!

The pro membership hides all ads, plus gives you double the colors in the color bucket, and more awesome pro features!

[Learn more, Memberships starting at \\$2.50/m!](#)

**Follow me
on Twitter!**

@ConvertingColor