

Converting Colors

HunterLab(92.6843, 43.8365,
-23.2855)

Have a look what the booklet for
HunterLab(92.6843, 43.8365,
-23.2855) contains.

HunterLab(85.7856, 20.1774, -12.1734)	3
<i>Conversions</i>	4
<i>Details</i>	6
<i>Harmonies</i>	12
<i>Previews</i>	24
<i>Color Blindness Simulation</i>	28
<i>CSS Examples</i>	31

Color

**HunterLab(85.7856, 20.1774,
-12.1734)**

Conversions

Conversions Part 1

Format	Color
Hex	FFD0FF
RGB	255, 208, 255
RGB Percent	100%, 82%, 100%
CMY	0.0000, 0.1843, 0.0000
CMYK	0.00, 0.18, 0.00, 0.00
HSL	300°, 100%, 91%
HSV	300°, 18%, 100%
XYZ	81.8458, 73.5917, 104.4986
YIQ	227.4110, 12.9250, 24.5810

Conversions

Conversions Part 2

Format	Color
R_{YB}	255, 208, 255
Decimal	16765183
CIE _{Lab}	88.73, 24.27, -16.71
CIE _{LCh}	89, 29.463, 325.450
Yxy	73.5945, 0.3149, 0.2831
Android (android.graphics.Color)	4294955263 (0xFFFFD0FF)
YUV	227.4110, 13.6014, 24.1956
Hunter-Lab	85.7856, 20.1774, -12.1734

Details

The HunterLab color $85.7856, 20.1774, -12.1734$ is a light color, and the websafe version is hex $FFCCFF$. A complement of this color would be $94.5965, -27.4941, 20.4043$, and the grayscale version is $87.7635, -4.6828, 4.7684$.

A 20% lighter version of the original color is $100.0000, -5.3358, 5.4332$, and $62.3422, 19.3829, -12.0562$ is the 20% darker color. If you saturate the color by 10%, you get $78.8311, 34.4106, -21.9781$, and if you desaturate by 10%, it is $93.2977, 6.1883, -2.5246$.

Distribution



- Red (100%)
- Green (82%)
- Blue (100%)



- Red (100%)
- Yellow (82%)
- Blue (100%)



- Cyan (0%)
- Magenta (18%)
- Yellow (0%)
- Black (0%)



- Cyan (0%)
- Magenta (18%)
- Yellow (0%)

Brightness & Saturation Gradients

These gradients show how the HunterLab color 85.7856, 20.1774, -12.1734 changes by changing the brightness by 10 percent. The first figure shows a shift by +10% for each color and the second figure -10%.

Similar to the brightness gradients but the following saturation gradients show a change of the HunterLab color 85.7856, 20.1774, -12.1734 by changing the saturation by 10% instead.

85.7856, 20.1774,
-12.1734

85.7856, 20.1774,
-12.1734

217.5024, 21.3230,
-10.1855

73.7985, 19.7345,
-12.1517

111.4993, 20.8335,
-12.0464

62.4270, 19.2117,
-12.0725

125.1733, 21.0645,
-11.9087

51.7082, 18.5966,
-11.9293

139.3648, 21.2362,
-11.7246

41.6847, 17.8780,
-11.7178

154.0554, 21.3522,
-11.4965

32.4084, 17.0421,
-11.4342

169.2287, 21.4162,
-11.2267

23.9452, 16.0723,
-11.0783

184.8698, 21.4309,

16.3825, 14.9510,

-10.9172

-10.6620

200.9652, 21.3991,
-10.5695

■ 9.8438, 13.6737,
-10.2452

0.0000, INF, -NF

■ 85.7856, 20.1774,
-12.1734

■ 85.7856, 20.1774,
-12.1734

■ 78.8311, 34.4106,
-21.9781

■ 93.2977, 6.1883,
-2.5246

■ 72.5230, 48.6925,
-31.8042

100.0000, -5.3358,
5.4332

■ 66.9692, 62.6503,
-41.3963

■ 62.2810, 75.7092,
-50.3616

■ 58.5591, 87.1072,
-58.1798

■ 55.8685, 96.0276,
-64.2946

■ 54.2068, 101.8650,
-68.2943

■ 53.4481, 104.6213,
-70.1825

■ 53.3667, 104.9207,
-70.3875

Harmonies

Analogous

The Analogous color harmony consists of three colors that are next to each other on the color wheel.



85.7872, 8.0110, -23.5926



85.7856, 20.1774, -12.1734



85.7872, 25.7145, 2.4912

Triad

The Triadic color harmony groups three colors that are evenly spaced from another and form a triangle on the color wheel.



85.7872, 20.1743, -12.1712



85.7872, -2.3097, 27.5363



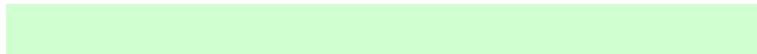
85.7872, -28.8278, -7.8159

Complementary

The Complementary color scheme is a pair of colors which are on the opposite of each other on the color wheel.



85.7856, 20.1774, -12.1734



94.5965, -27.4941, 20.4043

Split Complementary

Split-complementary colors differ from the complementary color scheme. The scheme consists of three colors, the original color and two neighbors of the complement color.



85.7872, -31.1820, 6.7924



85.7856, 20.1774, -12.1734



85.7872, -16.4881, 25.7188

Square

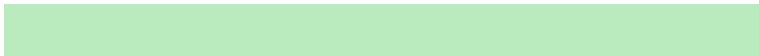
The Square scheme is like the rectangle color scheme, but the four colors are evenly spaced on the color wheel.



85.7872, 20.1743, -12.1712



85.7872, 12.1854, 24.1315



85.7872, -26.8147, 18.6651



85.7872, -20.1530, -20.7936

Rectangle

The Rectangle color scheme consists of four colors that form a rectangle on the color wheel.



85.7856, 20.1774, -12.1734



85.7872, 24.6503, 11.5822



85.7872, -26.8147, 18.6651



85.7872, -30.3584, -2.8708

Sweetspot

The Sweet Spot groups the original color and five complimentary colors.



85.7872, 20.1743, -12.1712



95.1965, 2.8409, -0.2140



81.0834, 4.7665, -19.1326



43.8048, 1.7298, -0.3858

0.0000, NaN, NaN



46.2646, -2.4686, 2.5136

Same Dimension

The Same Dimension uses a secret algorithm to generate beautiful new colors.



85.7872, 20.1743, -12.1712



83.2351, 25.2369, -15.6600



84.9544, 15.8317, -0.3970



42.7790, 3.5516, -1.6432



38.5764, 75.8426, -50.8800



12.0372, 23.6656, -15.8764

Inverse Universe

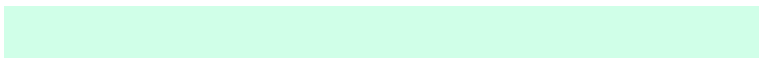
The Inverse Universe completely reimagines the original color for something new.



85.7872, 20.1743, -12.1712



83.2351, 25.2369, -15.6600



95.2516, -23.7635, 10.9869



42.7790, 3.5516, -1.6432



38.5764, 75.8426, -50.8800



12.0372, 23.6656, -15.8764

Previews

White Background



This preview shows how the HunterLab color 85.7856, 20.1774, -12.1734 looks on a white background.

Color Contrast Check

Large Text (above 18pt) WCAG AA × Fail

Any Text WCAG AA × Fail

Large Text (above 18pt) WCAG AAA × Fail

Any Text WCAG AAA × Fail

Black Background



This preview shows how the HunterLab color 85.7856, 20.1774, -12.1734 looks on a black background.

Color Contrast Check

Large Text (above 18pt) WCAG AA ✓ Pass

Any Text WCAG AA ✓ Pass

Large Text (above 18pt) WCAG AAA ✓ Pass

Any Text WCAG AAA ✓ Pass

If you want to check with other color combinations, try the [Color Contrast Checker](#).

HunterLab 85.7856, 20.1774, -12.1734 Background



This preview shows how black text looks on a background with the HunterLab color 85.7856, 20.1774, -12.1734.



This preview shows how white text looks on a background with the HunterLab color 85.7856, 20.1774, -12.1734.

-12.1734.

Color Blindness Simulation

Color vision deficiency is a very complex topic, and I could not describe the different causes any better than Wikipedia does, so if you want to learn more, you should check out their [article about color blindness](#).

Dichromacy



Original Color

85.7856, 20.1774, -12.1734

Protanopia

86.0590, -0.2471, -12.1548

Deuteranopia

85.7558, 6.4048, -11.2946



Tritanopia

85.8807, 11.2488, 1.9394

Trichromacy



Original Color

85.7856, 20.1774, -12.1734



Protanomaly

85.8305, 6.8042, -12.3457



Deuteranomaly

85.7902, 11.1858, -11.7427



Tritanomaly

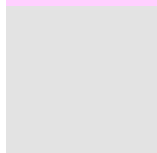
85.7071, 14.2769, -2.8947

Monochromacy



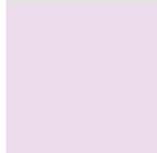
Original Color

85.7856, 20.1774, -12.1734



Achromatopsia

87.6442, -4.6765, 4.7619



Achromatomaly

86.7787, 4.0636, -1.1974

CSS Examples

Text

The CSS property to change the color of the text to HunterLab 85.7856, 20.1774, -12.1734 is called "color". The color property can be set on classes, ids or directly on the HTML element.

This example shows how text in the color `rgb(255, 208, 255)` looks like.

```
.text, #text, p{  
    color:rgb(255, 208, 255)  
}
```

If you want to add a text shadow in that color use the text-shadow property, you can generate a text shadow directly with our [CSS Text Shadow Generator](#).

Here you see how black text with a 4 pixel rgb(255, 208, 255) colored shadow looks like.

```
.shadow{ text-shadow: 4px 4px 2px rgb(255, 208, 255) }
```

Border

The CSS property to change the border of an element to HunterLab 85.7856, 20.1774, -12.1734 is called "border". The border property can be set on classes, ids or directly on the HTML element.

This example shows the color as border, it can be applied via the CSS property "border" or "border-color".

```
.border, #border, table{ border:4px solid rgb(255, 208, 255) }
```


If only the border color should be changed use the property `border-color`.

```
.border{ border-color:rgb(255, 208, 255) }
```

If you want to add a box shadow in that color use:

Here you see how a box with a 4 pixel `rgb(255, 208, 255)` colored shadow looks like.

```
.boxshadow{ -moz-box-shadow:4px 4px 4px  
4px rgb(255, 208, 255); -webkit-box-  
shadow:4px 4px 4px 4px rgb(255, 208, 255);  
box-shadow:4px 4px 4px 4px rgb(255, 208,  
255) }
```

Background

The CSS property to change the background color of an element to HunterLab 85.7856, 20.1774, -12.1734 is called "background". The background property can be set on classes, ids or directly on the HTML element.

```
.background, #background, body{  
background: rgb(255, 208, 255) }
```

If only the background color should be changed can be used:

```
.background{ background-color: rgb(255,  
208, 255) }
```

This example shows the color as background, it is applied via the CSS property "background".

To optimize and compress your CSS code, you can use our [online CSS compressor and optimizer](#) based on csstidy. If you want to create a linear or radial gradient as background or border, check our [CSS Gradient Generator](#).

Hey! You found this booklet interesting? Support Converting Colors with the new Membership Option!

The pro membership hides all ads, plus gives you double the colors in the color bucket, and more awesome pro features!

[Learn more, Memberships starting at \\$2.50/m!](#)

**Follow me
on Twitter!**

@ConvertingColor