

Converting Colors

RGB(131, 102, 82)

Have a look what the booklet for
RGB(131, 102, 82) contains.

RGB(131, 102, 82)	3
<i>Conversions</i>	4
<i>Details</i>	6
<i>Harmonies</i>	11
<i>Previews</i>	23
<i>Color Blindness Simulation</i>	26
<i>CSS Examples</i>	29

Color

RGB(131, 102, 82)

Conversions

Conversions Part 1

Format	Color
Hex	836652
RGB	131, 102, 82
RGB Percent	51%, 40%, 32%
CMY	0.4863, 0.6000, 0.6784
CMYK	0.00, 0.22, 0.37, 0.49
HSL	24°, 23%, 42%
HSV	24°, 37%, 51%
XYZ	15.6344, 14.9372, 10.0418
YIQ	108.3910, 23.7040, -0.0720

Conversions

Conversions Part 2

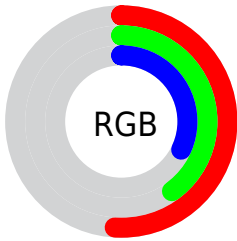
Format	Color
R_{YB}	131, 116, 82
Decimal	8611410
CIE Lab	45.55, 8.66, 15.76
CIE LCh	46, 17.982, 61.193
Yxy	14.9372, 0.3850, 0.3678
Android (android.graphics.Color)	4286801490 (0xFF836652)
YUV	108.3910, -13.0108, 19.8281
Hunter-Lab	38.6487, 4.5727, 11.6492

Details

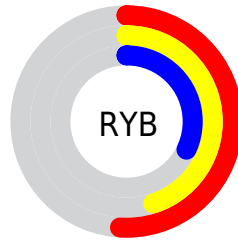
The RGB color **131, 102, 82** is a dark color, and the websafe version is hex **996666**. A complement of this color would be **82, 111, 131**, and the grayscale version is **108, 108, 108**.

A 20% lighter version of the original color is **185, 153, 131**, and **80, 55, 37** is the 20% darker color. If you saturate the color by 10%, you get **131, 94, 69**, and if you desaturate by 10%, it is **131, 110, 95**.

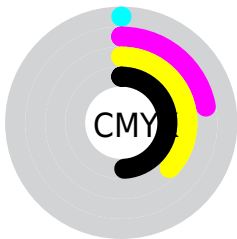
Distribution



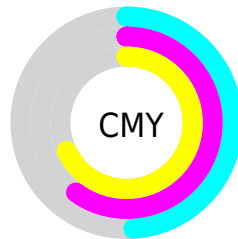
- Red (51%)
- Green (40%)
- Blue (32%)



- Red (51%)
- Yellow (45%)
- Blue (32%)



- Cyan (0%)
- Magenta (22%)
- Yellow (37%)
- Black (49%)



- Cyan (49%)
- Magenta (60%)
- Yellow (68%)

Brightness & Saturation Gradients

These gradients show how the RGB color 131, 102, 82 changes by changing the brightness by 10 percent. The first figure shows a shift by +10% for each color and the second figure -10%.

Similar to the brightness gradients but the following saturation gradients show a change of the RGB color 131, 102, 82 by changing the saturation by 10% instead.



131, 102, 82



131, 102, 82

255, 255, 255



105, 78, 59



185, 153, 131



80, 55, 37



213, 180, 158



56, 34, 16



242, 207, 185



34, 12, 0



255, 236, 212



0, 0, 0



255, 255, 241



131, 102, 82



131, 102, 82



131, 94, 69



131, 110, 95



131, 86, 56



131, 118, 108

■ 131, 79, 43

■ 131, 125, 121

■ 131, 71, 30

■ 131, 133, 134

■ 131, 63, 17

■ 131, 141, 148

■ 131, 55, 3

■ 131, 149, 161

■ 131, 53, 0

■ 131, 156, 174

■ 131, 164, 187

■ 131, 172, 200

Harmonies

Analogous

The Analogous color harmony consists of three colors that are next to each other on the color wheel.



138, 98, 93



131, 102, 82



118, 107, 78

Triad

The Triadic color harmony groups three colors that are evenly spaced from another and form a triangle on the color wheel.



131, 102, 82



70, 116, 108



111, 104, 133

Complementary

The Complementary color scheme is a pair of colors which are on the opposite of each other on the color wheel.



131, 102, 82



82, 111, 131

Split Complementary

Split-complementary colors differ from the complementary color scheme. The scheme consists of three colors, the original color and two neighbors of the complement color.



90, 109, 138



131, 102, 82



64, 116, 123

Square

The Square scheme is like the rectangle color scheme, but the four colors are evenly spaced on the color wheel.



131, 102, 82



85, 115, 93



72, 113, 134



128, 99, 123

Rectangle

The Rectangle color scheme consists of four colors that form a rectangle on the color wheel.



131, 102, 82



108, 110, 80



72, 113, 134



104, 106, 136

Sweetspot

The Sweet Spot groups the original color and five complimentary colors.



131, 102, 82



171, 160, 152



131, 82, 111



87, 80, 75



214, 214, 214



87, 87, 87

Same Dimension

The Same Dimension uses a secret algorithm to generate beautiful new colors.



131, 102, 82



171, 125, 94



131, 126, 82



66, 62, 60



130, 53, 0



3, 1, 0

Inverse Universe

The Inverse Universe completely reimagines the original color for something new.



82, 111, 131



94, 139, 171



82, 87, 131



60, 64, 66



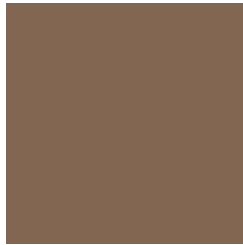
0, 77, 130



0, 2, 3

Previews

White Background



This preview shows how the RGB color 131, 102, 82 looks on a white background.

Color Contrast Check

Large Text (above 18pt) WCAG AA ✓ Pass

Any Text WCAG AA ✓ Pass

Large Text (above 18pt) WCAG AAA ✓ Pass

Any Text WCAG AAA × Fail

Black Background



This preview shows how the RGB color 131, 102, 82 looks on a black background.

Color Contrast Check

Large Text (above 18pt) WCAG AA ✓ Pass

Any Text WCAG AA × Fail

Large Text (above 18pt) WCAG AAA × Fail

Any Text WCAG AAA × Fail

If you want to check with other color combinations, try the [Color Contrast Checker](#).

RGB 131, 102, 82 Background



This preview shows how black text looks on a background with the RGB color 131, 102, 82.



This preview shows how white text looks on a background with the RGB color 131, 102, 82.

Color Blindness Simulation

Color vision deficiency is a very complex topic, and I could not describe the different causes any better than Wikipedia does, so if you want to learn more, you should check out their [article about color blindness](#).

Dichromacy



Original Color

131, 102, 82

Protanopia

115, 108, 85

Deuteranopia

127, 104, 82



Tritanopia
133, 99, 106

Trichromacy



Original Color

131, 102, 82

Protanomaly

121, 106, 84

Deuteranomaly

128, 103, 82

Tritanomaly

132, 100, 97

Monochromacy



Original Color

131, 102, 82

Achromatopsia

108, 108, 108

Achromatomaly

116, 106, 99

CSS Examples

Text

The CSS property to change the color of the text to RGB 131, 102, 82 is called "color". The color property can be set on classes, ids or directly on the HTML element.

This example shows how text in the color `rgb(131, 102, 82)` looks like.

```
.text, #text, p{  
    color:rgb(131, 102, 82)  
}
```

If you want to add a text shadow in that color use the text-shadow property, you can generate a text shadow directly with our [CSS Text Shadow Generator](#).

Here you see how black text with a 4 pixel rgb(131, 102, 82) colored shadow looks like.

```
.shadow{ text-shadow: 4px 4px 2px rgb(131, 102, 82) }
```

Border

The CSS property to change the border of an element to RGB 131, 102, 82 is called "border". The border property can be set on classes, ids or directly on the HTML element.

This example shows the color as border, it can be applied via the CSS property "border" or "border-color".

```
.border, #border, table{ border:4px solid rgb(131, 102, 82) }
```

If only the border color should be changed use the property `border-color`.

```
.border{ border-color:rgb(131, 102, 82) }
```

If you want to add a box shadow in that color use:

Here you see how a box with a 4 pixel `rgb(131, 102, 82)` colored shadow looks like.

```
.boxshadow{ -moz-box-shadow:4px 4px 4px  
4px rgb(131, 102, 82); -webkit-box-  
shadow:4px 4px 4px 4px rgb(131, 102, 82);  
box-shadow:4px 4px 4px 4px rgb(131, 102,  
82) }
```

Background

The CSS property to change the background color of an element to RGB 131, 102, 82 is called "background". The background property can be set on classes, ids or directly on the HTML element.

```
.background, #background, body{  
background: rgb(131, 102, 82) }
```

If only the background color should be changed can be used:

```
.background{ background-color: rgb(131,  
102, 82) }
```

This example shows the color as background, it is applied via the CSS property "background".

To optimize and compress your CSS code, you can use our [online CSS compressor and optimizer](#) based on csstidy. If you want to create a linear or radial gradient as background or border, check our [CSS Gradient Generator](#).

Hey! You found this booklet interesting? Support Converting Colors with the new Membership Option!

The pro membership hides all ads, plus gives you double the colors in the color bucket, and more awesome pro features!

[Learn more, Memberships starting at \\$2.50/m!](#)

**Follow me
on Twitter!**

@ConvertingColor