

Converting Colors

RGB(156, 122, 86)

Have a look what the booklet for
RGB(156, 122, 86) contains.

RGB(156, 122, 86)	3
<i>Conversions</i>	4
<i>Details</i>	6
<i>Harmonies</i>	11
<i>Previews</i>	23
<i>Color Blindness Simulation</i>	26
<i>CSS Examples</i>	29

Color

RGB(156, 122, 86)

Conversions

Conversions Part 1

Format	Color
Hex	9C7A56
RGB	156, 122, 86
RGB Percent	61%, 48%, 34%
CMY	0.3882, 0.5216, 0.6627
CMYK	0.00, 0.22, 0.45, 0.39
HSL	31°, 29%, 47%
HSV	31°, 45%, 61%
XYZ	22.3495, 21.6589, 11.8067
YIQ	128.0620, 31.8200, -3.9880

Conversions

Conversions Part 2

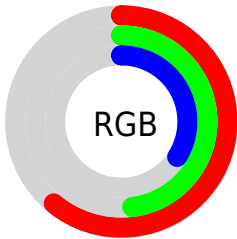
Format	Color
RYB	152, 156, 86
Decimal	10254934
CIELab	53.66, 8.34, 24.74
CIELCh	54, 26.105, 71.368
Yxy	21.6589, 0.4004, 0.3880
Android (android.graphics.Color)	4288445014 (0xFF9C7A56)
YUV	128.0620, -20.7366, 24.5016
Hunter-Lab	46.5391, 4.2779, 17.5358

Details

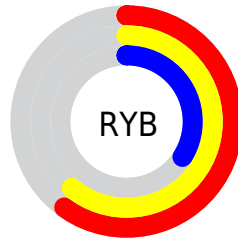
The RGB color **156, 122, 86** is a dark color, and the websafe version is hex **996633**. A complement of this color would be **86, 120, 156**, and the grayscale version is **128, 128, 128**.

A 20% lighter version of the original color is **212, 174, 136**, and **103, 73, 40** is the 20% darker color. If you saturate the color by 10%, you get **156, 114, 70**, and if you desaturate by 10%, it is **156, 130, 102**.

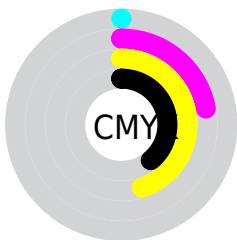
Distribution



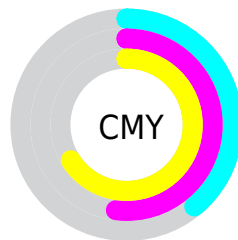
- Red (61%)
- Green (48%)
- Blue (34%)



- Red (60%)
- Yellow (61%)
- Blue (34%)



- Cyan (0%)
- Magenta (22%)
- Yellow (45%)
- Black (39%)



- Cyan (39%)
- Magenta (52%)
- Yellow (66%)

Brightness & Saturation Gradients

These gradients show how the RGB color 156, 122, 86 changes by changing the brightness by 10 percent. The first figure shows a shift by +10% for each color and the second figure -10%.

Similar to the brightness gradients but the following saturation gradients show a change of the RGB color 156, 122, 86 by changing the saturation by 10% instead.



156, 122, 86



156, 122, 86

255, 255, 255



129, 97, 62



212, 174, 136



103, 73, 40



241, 202, 163



77, 51, 18



255, 230, 190



54, 30, 0



255, 255, 218



30, 6, 0



255, 255, 246



0, 0, 0



156, 122, 86



156, 122, 86



156, 114, 70



156, 130, 102



156, 107, 55



156, 137, 117

■ 156, 99, 39

■ 156, 145, 133

■ 156, 92, 24

■ 156, 152, 148

■ 156, 84, 8

■ 156, 160, 164

■ 156, 80, 0

■ 156, 167, 180

■ 156, 175, 195

■ 156, 183, 211

■ 156, 190, 226

Harmonies

Analogous

The Analogous color harmony consists of three colors that are next to each other on the color wheel.



170, 115, 100



156, 122, 86



135, 130, 84

Triad

The Triadic color harmony groups three colors that are evenly spaced from another and form a triangle on the color wheel.



156, 122, 86



59, 141, 136



142, 119, 162

Complementary

The Complementary color scheme is a pair of colors which are on the opposite of each other on the color wheel.



156, 122, 86



86, 120, 156

Split Complementary

Split-complementary colors differ from the complementary color scheme. The scheme consists of three colors, the original color and two neighbors of the complement color.



111, 127, 172



156, 122, 86



53, 139, 157

Square

The Square scheme is like the rectangle color scheme, but the four colors are evenly spaced on the color wheel.



156, 122, 86



84, 139, 113



77, 134, 170



164, 113, 143

Rectangle

The Rectangle color scheme consists of four colors that form a rectangle on the color wheel.



156, 122, 86



119, 134, 89



77, 134, 170



133, 122, 167

Sweetspot

The Sweet Spot groups the original color and five complimentary colors.



156, 122, 86



204, 191, 177



156, 86, 121



102, 94, 86



230, 230, 230



102, 102, 102

Same Dimension

The Same Dimension uses a secret algorithm to generate beautiful new colors.



156, 122, 86



204, 150, 94



156, 156, 86



79, 75, 71



143, 73, 0



15, 8, 0

Inverse Universe

The Inverse Universe completely reimagines the original color for something new.



86, 120, 156



94, 147, 204



86, 86, 156



71, 75, 79



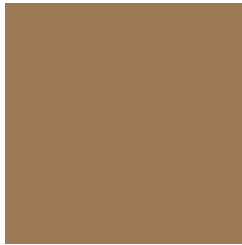
0, 69, 143



0, 7, 15

Previews

White Background



This preview shows how the RGB color 156, 122, 86 looks on a white background.

Color Contrast Check

Large Text (above 18pt) WCAG AA ✓ Pass

Any Text WCAG AA ✗ Fail

Large Text (above 18pt) WCAG AAA ✗ Fail

Any Text WCAG AAA ✗ Fail

Black Background



This preview shows how the RGB color 156, 122, 86 looks on a black background.

Color Contrast Check

Large Text (above 18pt) WCAG AA ✓ Pass

Any Text WCAG AA ✓ Pass

Large Text (above 18pt) WCAG AAA ✓ Pass

Any Text WCAG AAA × Fail

If you want to check with other color combinations, try the [Color Contrast Checker](#).

RGB 156, 122, 86 Background



This preview shows how black text looks on a background with the RGB color 156, 122, 86.



This preview shows how white text looks on a background with the RGB color 156, 122, 86.

Color Blindness Simulation

Color vision deficiency is a very complex topic, and I could not describe the different causes any better than Wikipedia does, so if you want to learn more, you should check out their [article about color blindness](#).

Dichromacy



Original Color

156, 122, 86

Protanopia

139, 128, 89

Deuteranopia

154, 123, 86



Tritanopia
160, 117, 126

Trichromacy



Original Color

156, 122, 86

Protanomaly

145, 126, 88

Deuteranomaly

155, 123, 86

Tritanomaly

159, 119, 111

Monochromacy



Original Color

156, 122, 86

Achromatopsia

128, 128, 128

Achromatomaly

138, 126, 113

CSS Examples

Text

The CSS property to change the color of the text to RGB 156, 122, 86 is called "color". The color property can be set on classes, ids or directly on the HTML element.

This example shows how text in the color `rgb(156, 122, 86)` looks like.

```
.text, #text, p{  
    color:rgb(156, 122, 86)  
}
```

If you want to add a text shadow in that color use the text-shadow property, you can generate a text shadow directly with our [CSS Text Shadow Generator](#).

Here you see how black text with a 4 pixel rgb(156, 122, 86) colored shadow looks like.

```
.shadow{ text-shadow: 4px 4px 2px rgb(156, 122, 86) }
```

Border

The CSS property to change the border of an element to RGB 156, 122, 86 is called "border". The border property can be set on classes, ids or directly on the HTML element.

This example shows the color as border, it can be applied via the CSS property "border" or "border-color".

```
.border, #border, table{ border:4px solid rgb(156, 122, 86) }
```

If only the border color should be changed use the property `border-color`.

```
.border{ border-color:rgb(156, 122, 86) }
```

If you want to add a box shadow in that color use:

Here you see how a box with a 4 pixel `rgb(156, 122, 86)` colored shadow looks like.

```
.boxshadow{ -moz-box-shadow:4px 4px 4px  
4px rgb(156, 122, 86); -webkit-box-  
shadow:4px 4px 4px 4px rgb(156, 122, 86);  
box-shadow:4px 4px 4px 4px rgb(156, 122,  
86) }
```

Background

The CSS property to change the background color of an element to RGB 156, 122, 86 is called "background". The background property can be set on classes, ids or directly on the HTML element.

```
.background, #background, body{  
background: rgb(156, 122, 86) }
```

If only the background color should be changed can be used:

```
.background{ background-color: rgb(156,  
122, 86) }
```

This example shows the color as background, it is applied via the CSS property "background".

To optimize and compress your CSS code, you can use our [online CSS compressor and optimizer](#) based on csstidy. If you want to create a linear or radial gradient as background or border, check our [CSS Gradient Generator](#).

Hey! You found this booklet interesting? Support Converting Colors with the new Membership Option!

The pro membership hides all ads, plus gives you double the colors in the color bucket, and more awesome pro features!

[Learn more, Memberships starting at \\$2.50/m!](#)

**Follow me
on Twitter!**

@ConvertingColor