

Converting Colors

RGB(160, 125, 87)

Have a look what the booklet for
RGB(160, 125, 87) contains.

RGB(160, 125, 87)	3
<i>Conversions</i>	4
<i>Details</i>	6
<i>Harmonies</i>	11
<i>Previews</i>	23
<i>Color Blindness Simulation</i>	26
<i>CSS Examples</i>	29

Color

RGB(160, 125, 87)

Conversions

Conversions Part 1

Format	Color
Hex	A07D57
RGB	160, 125, 87
RGB Percent	63%, 49%, 34%
CMY	0.3725, 0.5098, 0.6588
CMYK	0.00, 0.22, 0.46, 0.37
HSL	31°, 30%, 48%
HSV	31°, 46%, 63%
XYZ	23.5511, 22.8289, 12.1820
YIQ	131.1330, 33.0580, -4.3980

Conversions

Conversions Part 2

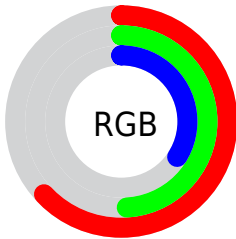
Format	Color
RYB	154, 160, 87
Decimal	10517847
CIELab	54.90, 8.46, 25.86
CIElCh	55, 27.211, 71.882
Yxy	22.8289, 0.4022, 0.3898
Android (android.graphics.Color)	4288707927 (0xFFA07D57)
YUV	131.1330, -21.7576, 25.3164
Hunter-Lab	47.7796, 4.3703, 18.3291

Details

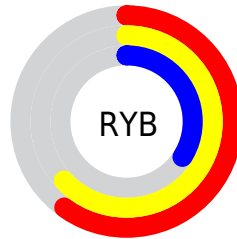
The RGB color **160, 125, 87** is a dark color, and the websafe version is hex **996633**. A complement of this color would be **87, 122, 160**, and the grayscale version is **131, 131, 131**.

A 20% lighter version of the original color is **216, 178, 137**, and **106, 76, 41** is the 20% darker color. If you saturate the color by 10%, you get **160, 117, 71**, and if you desaturate by 10%, it is **160, 133, 103**.

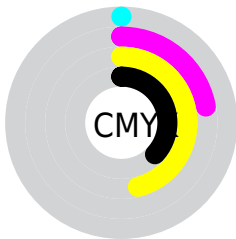
Distribution



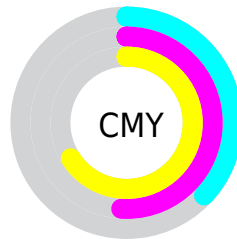
- Red (63%)
- Green (49%)
- Blue (34%)



- Red (60%)
- Yellow (63%)
- Blue (34%)



- Cyan (0%)
- Magenta (22%)
- Yellow (46%)
- Black (37%)



- Cyan (37%)
- Magenta (51%)
- Yellow (66%)

Brightness & Saturation Gradients

These gradients show how the RGB color 160, 125, 87 changes by changing the brightness by 10 percent. The first figure shows a shift by +10% for each color and the second figure -10%.

Similar to the brightness gradients but the following saturation gradients show a change of the RGB color 160, 125, 87 by changing the saturation by 10% instead.



160, 125, 87



160, 125, 87

255, 255, 255



133, 100, 63



216, 178, 137



106, 76, 41



245, 205, 164



81, 54, 19



255, 233, 191



57, 32, 0



255, 255, 219



33, 10, 0



255, 255, 247



0, 0, 0



160, 125, 87



160, 125, 87



160, 117, 71



160, 133, 103



160, 110, 55



160, 140, 119

■ 160, 102, 39

■ 160, 148, 135

■ 160, 94, 23

■ 160, 156, 151

■ 160, 87, 7

■ 160, 163, 167

■ 160, 83, 0

■ 160, 171, 183

■ 160, 179, 199

■ 160, 186, 215

■ 160, 194, 231

Harmonies

Analogous

The Analogous color harmony consists of three colors that are next to each other on the color wheel.



174, 118, 101



160, 125, 87



138, 133, 85

Triad

The Triadic color harmony groups three colors that are evenly spaced from another and form a triangle on the color wheel.



160, 125, 87



58, 144, 140



146, 122, 167

Complementary

The Complementary color scheme is a pair of colors which are on the opposite of each other on the color wheel.



160, 125, 87



87, 122, 160

Split Complementary

Split-complementary colors differ from the complementary color scheme. The scheme consists of three colors, the original color and two neighbors of the complement color.



114, 130, 177



160, 125, 87



51, 143, 162

Square

The Square scheme is like the rectangle color scheme, but the four colors are evenly spaced on the color wheel.



160, 125, 87



84, 143, 116



77, 138, 176



169, 115, 147

Rectangle

The Rectangle color scheme consists of four colors that form a rectangle on the color wheel.



160, 125, 87



121, 137, 91



77, 138, 176



136, 125, 171

Sweetspot

The Sweet Spot groups the original color and five complimentary colors.



160, 125, 87



209, 195, 180



160, 87, 122



105, 96, 87



232, 232, 232



105, 105, 105

Same Dimension

The Same Dimension uses a secret algorithm to generate beautiful new colors.



160, 125, 87



209, 154, 94



159, 160, 87



79, 75, 71



143, 74, 0



15, 8, 0

Inverse Universe

The Inverse Universe completely reimagines the original color for something new.



87, 122, 160



94, 149, 209



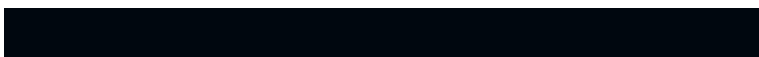
88, 87, 160



71, 75, 79



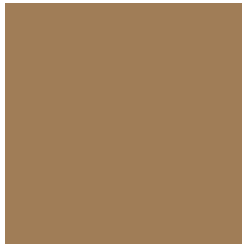
0, 68, 143



0, 7, 15

Previews

White Background



This preview shows how the RGB color 160, 125, 87 looks on a white background.

Color Contrast Check

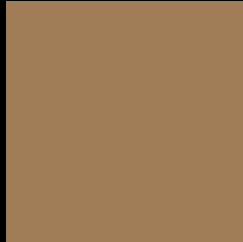
Large Text (above 18pt) WCAG AA ✓ Pass

Any Text WCAG AA × Fail

Large Text (above 18pt) WCAG AAA × Fail

Any Text WCAG AAA × Fail

Black Background



This preview shows how the RGB color 160, 125, 87 looks on a black background.

Color Contrast Check

Large Text (above 18pt) WCAG AA ✓ Pass

Any Text WCAG AA ✓ Pass

Large Text (above 18pt) WCAG AAA ✓ Pass

Any Text WCAG AAA × Fail

If you want to check with other color combinations, try the [Color Contrast Checker](#).

RGB 160, 125, 87 Background



This preview shows how black text looks on a background with the RGB color 160, 125, 87.



This preview shows how white text looks on a background with the RGB color 160, 125, 87.

Color Blindness Simulation

Color vision deficiency is a very complex topic, and I could not describe the different causes any better than Wikipedia does, so if you want to learn more, you should check out their [article about color blindness](#).

Dichromacy



Original Color


160, 125, 87

Protanopia

142, 132, 90

Deuteranopia

158, 126, 87



Tritanopia
164, 120, 129

Trichromacy



Original Color

160, 125, 87

Protanomaly

149, 129, 89

Deuteranomaly

159, 126, 87

Tritanomaly

163, 122, 114

Monochromacy



Original Color

160, 125, 87

Achromatopsia

131, 131, 131

Achromatomaly

142, 129, 115

CSS Examples

Text

The CSS property to change the color of the text to RGB 160, 125, 87 is called "color". The color property can be set on classes, ids or directly on the HTML element.

This example shows how text in the color `rgb(160, 125, 87)` looks like.

```
.text, #text, p{  
    color:rgb(160, 125, 87)  
}
```

If you want to add a text shadow in that color use the text-shadow property, you can generate a text shadow directly with our [CSS Text Shadow Generator](#).

Here you see how black text with a 4 pixel rgb(160, 125, 87) colored shadow looks like.

```
.shadow{ text-shadow: 4px 4px 2px rgb(160, 125, 87) }
```

Border

The CSS property to change the border of an element to RGB 160, 125, 87 is called "border". The border property can be set on classes, ids or directly on the HTML element.

This example shows the color as border, it can be applied via the CSS property "border" or "border-color".

```
.border, #border, table{ border:4px solid rgb(160, 125, 87) }
```

If only the border color should be changed use the property `border-color`.

```
.border{ border-color:rgb(160, 125, 87) }
```

If you want to add a box shadow in that color use:

Here you see how a box with a 4 pixel `rgb(160, 125, 87)` colored shadow looks like.

```
.boxshadow{ -moz-box-shadow:4px 4px 4px 4px rgb(160, 125, 87); -webkit-box-shadow:4px 4px 4px 4px rgb(160, 125, 87); box-shadow:4px 4px 4px 4px rgb(160, 125, 87) }
```

Background

The CSS property to change the background color of an element to RGB 160, 125, 87 is called "background". The background property can be set on classes, ids or directly on the HTML element.

```
.background, #background, body{  
background: rgb(160, 125, 87) }
```

If only the background color should be changed can be used:

```
.background{ background-color: rgb(160,  
125, 87) }
```

This example shows the color as background, it is applied via the CSS property "background".

To optimize and compress your CSS code, you can use our [online CSS compressor and optimizer](#) based on csstidy. If you want to create a linear or radial gradient as background or border, check our [CSS Gradient Generator](#).

Hey! You found this booklet interesting? Support Converting Colors with the new Membership Option!

The pro membership hides all ads, plus gives you double the colors in the color bucket, and more awesome pro features!

[Learn more, Memberships starting at \\$2.50/m!](#)

**Follow me
on Twitter!**

@ConvertingColor