

Converting Colors

RGB(162, 108, 68)

Have a look what the booklet for
RGB(162, 108, 68) contains.

RGB(162, 108, 68)	3
<i>Conversions</i>	4
<i>Details</i>	6
<i>Harmonies</i>	11
<i>Previews</i>	23
<i>Color Blindness Simulation</i>	26
<i>CSS Examples</i>	29

Color

RGB(162, 108, 68)

Conversions

Conversions Part 1

Format	Color
Hex	A26C44
RGB	162, 108, 68
RGB Percent	64%, 42%, 27%
CMY	0.3647, 0.5765, 0.7333
CMYK	0.00, 0.33, 0.58, 0.36
HSL	26°, 41%, 45%
HSV	26°, 58%, 64%
XYZ	21.3062, 18.8239, 7.9792
YIQ	119.5860, 45.0240, -0.9920

Conversions

Conversions Part 2

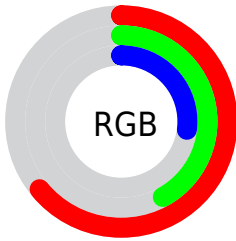
Format	Color
R_{YB}	162, 138, 68
Decimal	10644548
CIE _{Lab}	50.48, 17.18, 30.93
CIE _{LCh}	50, 35.378, 60.948
Yxy	18.8239, 0.4429, 0.3913
Android (android.graphics.Color)	4288834628 (0xFFA26C44)
YUV	119.5860, -25.4319, 37.1971
Hunter-Lab	43.3865, 11.7315, 19.4665

Details

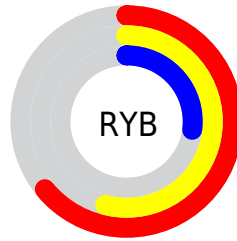
The RGB color **162, 108, 68** is a dark color, and the websafe version is hex **996633**. A complement of this color would be **68, 122, 162**, and the grayscale version is **120, 120, 120**.

A 20% lighter version of the original color is **220, 160, 117**, and **107, 60, 23** is the 20% darker color. If you saturate the color by 10%, you get **162, 99, 52**, and if you desaturate by 10%, it is **162, 117, 84**.

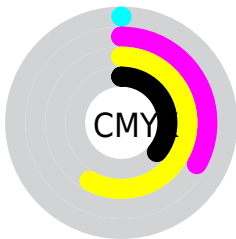
Distribution



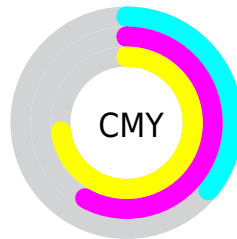
- Red (64%)
- Green (42%)
- Blue (27%)



- Red (64%)
- Yellow (54%)
- Blue (27%)



- Cyan (0%)
- Magenta (33%)
- Yellow (58%)
- Black (36%)



- Cyan (36%)
- Magenta (58%)
- Yellow (73%)

Brightness & Saturation Gradients

These gradients show how the RGB color 162, 108, 68 changes by changing the brightness by 10 percent. The first figure shows a shift by +10% for each color and the second figure -10%.

Similar to the brightness gradients but the following saturation gradients show a change of the RGB color 162, 108, 68 by changing the saturation by 10% instead.



162, 108, 68



162, 108, 68

255, 255, 255



134, 84, 45



220, 160, 117



107, 60, 23



249, 187, 143



81, 38, 0



255, 214, 170



54, 17, 0



255, 243, 197



32, 0, 1



255, 255, 225



0, 0, 0

255, 255, 254



162, 108, 68



162, 108, 68



162, 99, 52



162, 117, 84

■ 162, 89, 36

■ 162, 127, 100

■ 162, 80, 19

■ 162, 136, 117

■ 162, 71, 3

■ 162, 145, 133

■ 162, 69, 0

■ 162, 155, 149

■ 162, 164, 165

■ 162, 173, 181

■ 162, 182, 198

■ 162, 192, 214

Harmonies

Analogous

The Analogous color harmony consists of three colors that are next to each other on the color wheel.



176, 99, 91



162, 108, 68



138, 119, 59

Triad

The Triadic color harmony groups three colors that are evenly spaced from another and form a triangle on the color wheel.



162, 108, 68



0, 136, 120



124, 112, 172

Complementary

The Complementary color scheme is a pair of colors which are on the opposite of each other on the color wheel.



162, 108, 68



68, 122, 162

Split Complementary

Split-complementary colors differ from the complementary color scheme. The scheme consists of three colors, the original color and two neighbors of the complement color.



72, 123, 180



162, 108, 68



0, 135, 150

Square

The Square scheme is like the rectangle color scheme, but the four colors are evenly spaced on the color wheel.



162, 108, 68



69, 133, 90



0, 131, 172



158, 101, 150

Rectangle

The Rectangle color scheme consists of four colors that form a rectangle on the color wheel.



162, 108, 68



118, 125, 62



0, 131, 172



109, 116, 176

Sweetspot

The Sweet Spot groups the original color and five complimentary colors.



162, 108, 68



212, 191, 176



162, 68, 123



107, 95, 86



235, 235, 235



107, 107, 107

Same Dimension

The Same Dimension uses a secret algorithm to generate beautiful new colors.



162, 108, 68



212, 127, 63



162, 154, 68



82, 77, 73



145, 62, 0



18, 8, 0

Inverse Universe

The Inverse Universe completely reimagines the original color for something new.



68, 122, 162



63, 149, 212



68, 76, 162



73, 78, 82



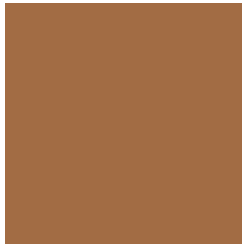
0, 83, 145



0, 10, 18

Previews

White Background



This preview shows how the RGB color 162, 108, 68 looks on a white background.

Color Contrast Check

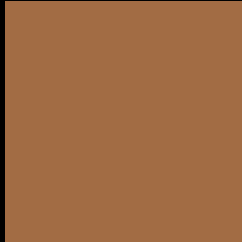
Large Text (above 18pt) WCAG AA ✓ Pass

Any Text WCAG AA × Fail

Large Text (above 18pt) WCAG AAA × Fail

Any Text WCAG AAA × Fail

Black Background



This preview shows how the RGB color 162, 108, 68 looks on a black background.

Color Contrast Check

Large Text (above 18pt) WCAG AA ✓ Pass

Any Text WCAG AA ✓ Pass

Large Text (above 18pt) WCAG AAA ✓ Pass

Any Text WCAG AAA × Fail

If you want to check with other color combinations, try the [Color Contrast Checker](#).

RGB 162, 108, 68 Background



This preview shows how black text looks on a background with the RGB color 162, 108, 68.



This preview shows how white text looks on a background with the RGB color 162, 108, 68.

Color Blindness Simulation

Color vision deficiency is a very complex topic, and I could not describe the different causes any better than Wikipedia does, so if you want to learn more, you should check out their [article about color blindness](#).


Dichromacy



Original Color
162, 108, 68

Protanopia
132, 121, 73

Deuteranopia
147, 115, 66



Tritanopia
165, 103, 110

Trichromacy



Original Color

162, 108, 68

Protanomaly

143, 116, 71

Deuteranomaly

152, 112, 67

Tritanomaly

164, 105, 95

Monochromacy



Original Color

162, 108, 68

Achromatopsia

120, 120, 120

Achromatomaly

135, 116, 101

CSS Examples

Text

The CSS property to change the color of the text to RGB 162, 108, 68 is called "color". The color property can be set on classes, ids or directly on the HTML element.

This example shows how text in the color `rgb(162, 108, 68)` looks like.

```
.text, #text, p{  
    color:rgb(162, 108, 68)  
}
```

If you want to add a text shadow in that color use the text-shadow property, you can generate a text shadow directly with our [CSS Text Shadow Generator](#).

Here you see how black text with a 4 pixel rgb(162, 108, 68) colored shadow looks like.

```
.shadow{ text-shadow: 4px 4px 2px rgb(162, 108, 68) }
```

Border

The CSS property to change the border of an element to RGB 162, 108, 68 is called "border". The border property can be set on classes, ids or directly on the HTML element.

This example shows the color as border, it can be applied via the CSS property "border" or "border-color".

```
.border, #border, table{ border:4px solid rgb(162, 108, 68) }
```

If only the border color should be changed use the property `border-color`.

```
.border{ border-color:rgb(162, 108, 68) }
```

If you want to add a box shadow in that color use:

Here you see how a box with a 4 pixel `rgb(162, 108, 68)` colored shadow looks like.

```
.boxshadow{ -moz-box-shadow:4px 4px 4px  
4px rgb(162, 108, 68); -webkit-box-  
shadow:4px 4px 4px 4px rgb(162, 108, 68);  
box-shadow:4px 4px 4px 4px rgb(162, 108,  
68) }
```

Background

The CSS property to change the background color of an element to RGB 162, 108, 68 is called "background". The background property can be set on classes, ids or directly on the HTML element.

```
.background, #background, body{  
background: rgb(162, 108, 68) }
```

If only the background color should be changed can be used:

```
.background{ background-color: rgb(162,  
108, 68) }
```

This example shows the color as background, it is applied via the CSS property "background".

To optimize and compress your CSS code, you can use our [online CSS compressor and optimizer](#) based on csstidy. If you want to create a linear or radial gradient as background or border, check our [CSS Gradient Generator](#).

Hey! You found this booklet interesting? Support Converting Colors with the new Membership Option!

The pro membership hides all ads, plus gives you double the colors in the color bucket, and more awesome pro features!

[Learn more, Memberships starting at \\$2.50/m!](#)

**Follow me
on Twitter!**

@ConvertingColor