

Converting Colors

RGB(162, 131, 116)

Have a look what the booklet for
RGB(162, 131, 116) contains.

RGB(162, 131, 116)	3
<i>Conversions</i>	4
<i>Details</i>	6
<i>Harmonies</i>	11
<i>Previews</i>	23
<i>Color Blindness Simulation</i>	26
<i>CSS Examples</i>	29

Color

RGB(162, 131, 116)

Conversions

Conversions Part 1

Format	Color
Hex	A28374
RGB	162, 131, 116
RGB Percent	64%, 51%, 45%
CMY	0.3647, 0.4863, 0.5451
CMYK	0.00, 0.19, 0.28, 0.36
HSL	20°, 20%, 55%
HSV	20°, 28%, 64%
XYZ	26.1690, 25.1749, 20.0030
YIQ	138.5590, 23.2910, 1.9070

Conversions

Conversions Part 2

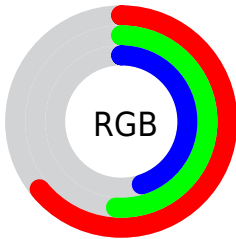
Format	Color
R_{YB}	162, 138, 116
Decimal	10650484
CIE _{Lab}	57.25, 9.56, 12.59
CIE _{LCh}	57, 15.810, 52.780
Yxy	25.1749, 0.3668, 0.3529
Android (android.graphics.Color)	4288840564 (0xFFA28374)
YUV	138.5590, -11.1216, 20.5578
Hunter-Lab	50.1746, 5.2925, 11.4852

Details

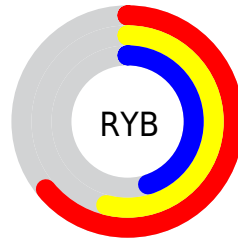
The RGB color **162, 131, 116** is a dark color, and the websafe version is hex **996666**. A complement of this color would be **116, 147, 162**, and the grayscale version is **139, 139, 139**.

A 20% lighter version of the original color is **218, 184, 168**, and **109, 82, 68** is the 20% darker color. If you saturate the color by 10%, you get **162, 120, 100**, and if you desaturate by 10%, it is **162, 142, 132**.

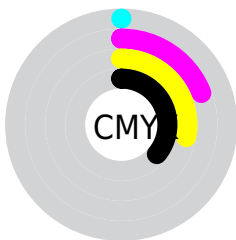
Distribution



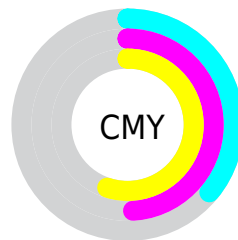
- Red (64%)
- Green (51%)
- Blue (45%)



- Red (64%)
- Yellow (54%)
- Blue (45%)



- Cyan (0%)
- Magenta (19%)
- Yellow (28%)
- Black (36%)




- Cyan (36%)
- Magenta (49%)
- Yellow (55%)

Brightness & Saturation Gradients

These gradients show how the RGB color 162, 131, 116 changes by changing the brightness by 10 percent. The first figure shows a shift by +10% for each color and the second figure -10%.

Similar to the brightness gradients but the following saturation gradients show a change of the RGB color 162, 131, 116 by changing the saturation by 10% instead.

 162, 131, 116

255, 255, 255

 218, 184, 168

 246, 212, 195


 255, 240, 223

255, 255, 252

 162, 131, 116

 162, 120, 100

 162, 109, 84

 162, 131, 116

 135, 106, 91


 109, 82, 68


 84, 59, 46


 60, 37, 25

 39, 16, 0

 0, 0, 0

 162, 131, 116

 162, 142, 132

 162, 153, 148

■ 162, 98, 67

■ 162, 164, 165

■ 162, 87, 51

■ 162, 175, 181

■ 162, 76, 35

■ 162, 186, 197

■ 162, 65, 19

■ 162, 197, 213

■ 162, 55, 3

■ 162, 207, 229

■ 162, 53, 0

■ 162, 218, 246

■ 162, 229, 255

Harmonies

Analogous

The Analogous color harmony consists of three colors that are next to each other on the color wheel.



166, 128, 127



162, 131, 116



151, 135, 110

Triad

The Triadic color harmony groups three colors that are evenly spaced from another and form a triangle on the color wheel.



162, 131, 116



107, 145, 133



136, 135, 163

Complementary

The Complementary color scheme is a pair of colors which are on the opposite of each other on the color wheel.



162, 131, 116



116, 147, 162

Split Complementary

Split-complementary colors differ from the complementary color scheme. The scheme consists of three colors, the original color and two neighbors of the complement color.



118, 140, 164



162, 131, 116



100, 145, 148

Square

The Square scheme is like the rectangle color scheme, but the four colors are evenly spaced on the color wheel.



162, 131, 116



121, 143, 120



104, 143, 159



152, 131, 154

Rectangle

The Rectangle color scheme consists of four colors that form a rectangle on the color wheel.



162, 131, 116



142, 138, 111



104, 143, 159



130, 137, 164

Sweetspot

The Sweet Spot groups the original color and five complimentary colors.



162, 131, 116



212, 199, 193



162, 116, 147



107, 99, 95



235, 235, 235



107, 107, 107

Same Dimension

The Same Dimension uses a secret algorithm to generate beautiful new colors.



162, 131, 116



212, 163, 140



162, 154, 116



82, 76, 73



145, 47, 0



18, 6, 0

Inverse Universe

The Inverse Universe completely reimagines the original color for something new.



116, 147, 162



140, 188, 212



116, 124, 162



73, 79, 82



0, 98, 145



0, 12, 18

Previews

White Background



This preview shows how the RGB color 162, 131, 116 looks on a white background.

Color Contrast Check

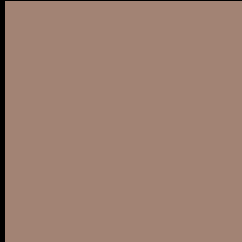
Large Text (above 18pt) WCAG AA ✓ Pass

Any Text WCAG AA ✗ Fail

Large Text (above 18pt) WCAG AAA ✗ Fail

Any Text WCAG AAA ✗ Fail

Black Background



This preview shows how the RGB color 162, 131, 116 looks on a black background.

Color Contrast Check

Large Text (above 18pt) WCAG AA ✓ Pass

Any Text WCAG AA ✓ Pass

Large Text (above 18pt) WCAG AAA ✓ Pass

Any Text WCAG AAA × Fail

If you want to check with other color combinations, try the [Color Contrast Checker](#).

RGB 162, 131, 116 Background



This preview shows how black text looks on a background with the RGB color 162, 131, 116.



This preview shows how white text looks on a background with the RGB color 162, 131, 116.

Color Blindness Simulation

Color vision deficiency is a very complex topic, and I could not describe the different causes any better than Wikipedia does, so if you want to learn more, you should check out their [article about color blindness](#).

Dichromacy



Original Color

162, 131, 116

Protanopia

144, 137, 119

Deuteranopia

159, 132, 116



Tritanopia
164, 128, 138

Trichromacy



Original Color

162, 131, 116

Protanomaly

151, 135, 118

Deuteranomaly

160, 132, 116

Tritanomaly

163, 129, 130

Monochromacy



Original Color

162, 131, 116

Achromatopsia

139, 139, 139

Achromatomaly

147, 136, 131

CSS Examples

Text

The CSS property to change the color of the text to RGB 162, 131, 116 is called "color". The color property can be set on classes, ids or directly on the HTML element.

This example shows how text in the color `rgb(162, 131, 116)` looks like.

```
.text, #text, p{  
    color:rgb(162, 131, 116)  
}
```

If you want to add a text shadow in that color use the text-shadow property, you can generate a text shadow directly with our [CSS Text Shadow Generator](#).

Here you see how black text with a 4 pixel rgb(162, 131, 116) colored shadow looks like.

```
.shadow{ text-shadow: 4px 4px 2px rgb(162, 131, 116) }
```

Border

The CSS property to change the border of an element to RGB 162, 131, 116 is called "border". The border property can be set on classes, ids or directly on the HTML element.

This example shows the color as border, it can be applied via the CSS property "border" or "border-color".

```
.border, #border, table{ border:4px solid rgb(162, 131, 116) }
```

If only the border color should be changed use the property `border-color`.

```
.border{ border-color:rgb(162, 131, 116) }
```

If you want to add a box shadow in that color use:

Here you see how a box with a 4 pixel `rgb(162, 131, 116)` colored shadow looks like.

```
.boxshadow{ -moz-box-shadow:4px 4px 4px  
4px rgb(162, 131, 116); -webkit-box-  
shadow:4px 4px 4px 4px rgb(162, 131, 116);  
box-shadow:4px 4px 4px 4px rgb(162, 131,  
116) }
```

Background

The CSS property to change the background color of an element to RGB 162, 131, 116 is called "background". The background property can be set on classes, ids or directly on the HTML element.

```
.background, #background, body{  
background: rgb(162, 131, 116) }
```

If only the background color should be changed can be used:

```
.background{ background-color: rgb(162,  
131, 116) }
```

This example shows the color as background, it is applied via the CSS property "background".

To optimize and compress your CSS code, you can use our [online CSS compressor and optimizer](#) based on csstidy. If you want to create a linear or radial gradient as background or border, check our [CSS Gradient Generator](#).

Hey! You found this booklet interesting? Support Converting Colors with the new Membership Option!

The pro membership hides all ads, plus gives you double the colors in the color bucket, and more awesome pro features!

[Learn more, Memberships starting at \\$2.50/m!](#)

**Follow me
on Twitter!**

@ConvertingColor