

Converting Colors

RGB(166, 139, 130)

Have a look what the booklet for
RGB(166, 139, 130) contains.

RGB(166, 139, 130)	3
<i>Conversions</i>	4
<i>Details</i>	6
<i>Harmonies</i>	11
<i>Previews</i>	23
<i>Color Blindness Simulation</i>	26
<i>CSS Examples</i>	29

Color

RGB(166, 139, 130)

Conversions

Conversions Part 1

Format	Color
Hex	A68B82
RGB	166, 139, 130
RGB Percent	65%, 55%, 51%
CMY	0.3490, 0.4549, 0.4902
CMYK	0.00, 0.16, 0.22, 0.35
HSL	15°, 17%, 58%
HSV	15°, 22%, 65%
XYZ	28.9878, 28.1839, 25.0313
YIQ	146.0470, 18.9810, 2.9250

Conversions

Conversions Part 2

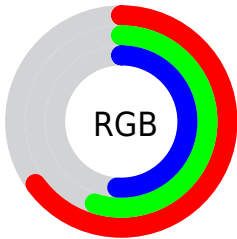
Format	Color
R_{YB}	166, 142, 130
Decimal	10914690
CIE _{Lab}	60.05, 8.74, 8.61
CIE _{LCh}	60, 12.267, 44.573
Yxy	28.1839, 0.3526, 0.3429
Android (android.graphics.Color)	4289104770 (0xFFA68B82)
YUV	146.0470, -7.9112, 17.4988
Hunter-Lab	53.0885, 4.5608, 9.2067

Details

The RGB color **166, 139, 130** is a dark color, and the websafe version is hex **999999**. A complement of this color would be **130, 157, 166**, and the grayscale version is **146, 146, 146**.

A 20% lighter version of the original color is **221, 193, 183**, and **114, 89, 81** is the 20% darker color. If you saturate the color by 10%, you get **166, 127, 113**, and if you desaturate by 10%, it is **166, 151, 147**.

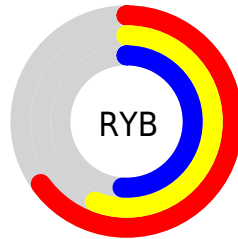
Distribution



Red (65%)

Green (55%)

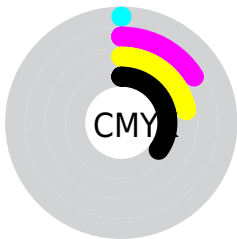
Blue (51%)



Red (65%)

Yellow (56%)

Blue (51%)

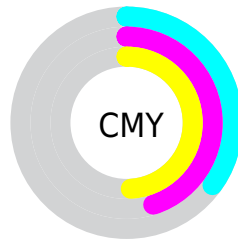


Cyan (0%)

Magenta (16%)

Yellow (22%)

Black (35%)



Cyan (35%)

Magenta (45%)

Yellow (49%)


Brightness & Saturation Gradients

These gradients show how the RGB color 166, 139, 130 changes by changing the brightness by 10 percent. The first figure shows a shift by +10% for each color and the second figure -10%.

Similar to the brightness gradients but the following saturation gradients show a change of the RGB color 166, 139, 130 by changing the saturation by 10% instead.

 166, 139, 130

255, 255, 255

 221, 193, 183

 250, 220, 211

 255, 249, 239

 166, 139, 130

 139, 114, 105

 114, 89, 81

 89, 66, 58

 65, 43, 36

 42, 23, 15

 20, 0, 0

 0, 0, 0

 166, 139, 130


 166, 127, 113


 166, 139, 130

 166, 151, 147

 166, 114, 97

 166, 164, 163

 166, 102, 80

 166, 176, 180

 166, 89, 64

 166, 189, 196

 166, 77, 47

 166, 201, 213

 166, 64, 30

 166, 214, 230

 166, 52, 14

 166, 226, 246

 166, 41, 0

 166, 239, 255

 166, 251, 255

Harmonies

Analogous

The Analogous color harmony consists of three colors that are next to each other on the color wheel.



168, 137, 140



166, 139, 130



159, 142, 124

Triad

The Triadic color harmony groups three colors that are evenly spaced from another and form a triangle on the color wheel.



166, 139, 130



124, 151, 139



140, 144, 165

Complementary

The Complementary color scheme is a pair of colors which are on the opposite of each other on the color wheel.



166, 139, 130



130, 157, 166

Split Complementary

Split-complementary colors differ from the complementary color scheme. The scheme consists of three colors, the original color and two neighbors of the complement color.



127, 147, 165



166, 139, 130



118, 151, 150

Square

The Square scheme is like the rectangle color scheme, but the four colors are evenly spaced on the color wheel.



166, 139, 130



135, 149, 129



118, 150, 159



153, 140, 160

Rectangle

The Rectangle color scheme consists of four colors that form a rectangle on the color wheel.



166, 139, 130



152, 144, 123



118, 150, 159



135, 145, 166

Sweetspot

The Sweet Spot groups the original color and five complimentary colors.



166, 139, 130



217, 205, 202



166, 130, 157



110, 103, 101



237, 237, 237



110, 110, 110

Same Dimension

The Same Dimension uses a secret algorithm to generate beautiful new colors.



166, 139, 130



217, 174, 160



166, 156, 130



84, 78, 76



148, 37, 0



20, 5, 0

Inverse Universe

The Inverse Universe completely reimagines the original color for something new.



130, 157, 166



160, 203, 217



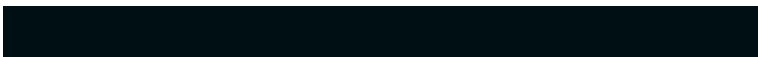
130, 139, 166



76, 82, 84



0, 111, 148



0, 15, 20

Previews

White Background



This preview shows how the RGB color 166, 139, 130 looks on a white background.

Color Contrast Check

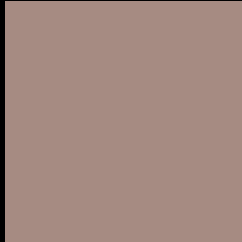
Large Text (above 18pt) WCAG AA ✓ Pass

Any Text WCAG AA ✗ Fail

Large Text (above 18pt) WCAG AAA ✗ Fail

Any Text WCAG AAA ✗ Fail

Black Background



This preview shows how the RGB color 166, 139, 130 looks on a black background.

Color Contrast Check

Large Text (above 18pt) WCAG AA ✓ Pass

Any Text WCAG AA ✓ Pass

Large Text (above 18pt) WCAG AAA ✓ Pass

Any Text WCAG AAA × Fail

If you want to check with other color combinations, try the [Color Contrast Checker](#).

RGB 166, 139, 130 Background



This preview shows how black text looks on a background with the RGB color 166, 139, 130.



This preview shows how white text looks on a background with the RGB color 166, 139, 130.

Color Blindness Simulation

Color vision deficiency is a very complex topic, and I could not describe the different causes any better than Wikipedia does, so if you want to learn more, you should check out their [article about color blindness](#).

Dichromacy



Original Color


166, 139, 130

Protanopia

150, 144, 133

Deuteranopia

164, 140, 130



Tritanopia
168, 136, 147

Trichromacy



Original Color
166, 139, 130

Protanomaly
156, 142, 132

Deuteranomaly
165, 140, 130

Tritanomaly
167, 137, 141

Monochromacy



Original Color
166, 139, 130

Achromatopsia
146, 146, 146

Achromatomaly
153, 143, 140

CSS Examples

Text

The CSS property to change the color of the text to RGB 166, 139, 130 is called "color". The color property can be set on classes, ids or directly on the HTML element.

This example shows how text in the color `rgb(166, 139, 130)` looks like.

```
.text, #text, p{  
    color:rgb(166, 139, 130)  
}
```

If you want to add a text shadow in that color use the text-shadow property, you can generate a text shadow directly with our [CSS Text Shadow Generator](#).

Here you see how black text with a 4 pixel rgb(166, 139, 130) colored shadow looks like.

```
.shadow{ text-shadow: 4px 4px 2px rgb(166, 139, 130) }
```

Border

The CSS property to change the border of an element to RGB 166, 139, 130 is called "border". The border property can be set on classes, ids or directly on the HTML element.

This example shows the color as border, it can be applied via the CSS property "border" or "border-color".

```
.border, #border, table{ border:4px solid rgb(166, 139, 130) }
```

If only the border color should be changed use the property `border-color`.

```
.border{ border-color:rgb(166, 139, 130) }
```

If you want to add a box shadow in that color use:

Here you see how a box with a 4 pixel `rgb(166, 139, 130)` colored shadow looks like.

```
.boxshadow{ -moz-box-shadow:4px 4px 4px  
4px rgb(166, 139, 130); -webkit-box-  
shadow:4px 4px 4px 4px rgb(166, 139, 130);  
box-shadow:4px 4px 4px 4px rgb(166, 139,  
130) }
```

Background

The CSS property to change the background color of an element to RGB 166, 139, 130 is called "background". The background property can be set on classes, ids or directly on the HTML element.

```
.background, #background, body{  
background: rgb(166, 139, 130) }
```

If only the background color should be changed can be used:

```
.background{ background-color: rgb(166,  
139, 130) }
```

This example shows the color as background, it is applied via the CSS property "background".

To optimize and compress your CSS code, you can use our [online CSS compressor and optimizer](#) based on csstidy. If you want to create a linear or radial gradient as background or border, check our [CSS Gradient Generator](#).

Hey! You found this booklet interesting? Support Converting Colors with the new Membership Option!

The pro membership hides all ads, plus gives you double the colors in the color bucket, and more awesome pro features!

[Learn more, Memberships starting at \\$2.50/m!](#)

**Follow me
on Twitter!**

@ConvertingColor