

Converting Colors

RGB(166, 83, 83)

Have a look what the booklet for
RGB(166, 83, 83) contains.

RGB(166, 83, 83)	3
<i>Conversions</i>	4
<i>Details</i>	6
<i>Harmonies</i>	11
<i>Previews</i>	23
<i>Color Blindness Simulation</i>	26
<i>CSS Examples</i>	29

Color

RGB(166, 83, 83)

Conversions

Conversions Part 1

Format	Color
Hex	A65353
RGB	166, 83, 83
RGB Percent	65%, 33%, 33%
CMY	0.3490, 0.6745, 0.6745
CMYK	0.00, 0.50, 0.50, 0.35
HSL	0°, 33%, 49%
HSV	0°, 50%, 65%
XYZ	20.3805, 14.9180, 9.9889
YIQ	107.8170, 49.4680, 17.5960

Conversions

Conversions Part 2

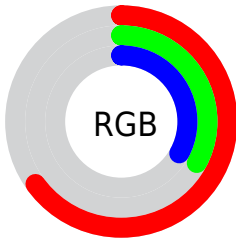
Format	Color
R_{YB}	166, 83, 83
Decimal	10900307
CIE _{Lab}	45.52, 34.09, 15.87
CIE _{LCh}	46, 37.602, 24.964
Yxy	14.9180, 0.4500, 0.3294
Android (android.graphics.Color)	4289090387 (0xFFA65353)
YUV	107.8170, -12.2348, 51.0265
Hunter-Lab	38.6239, 26.5965, 11.7031

Details

The RGB color **166, 83, 83** is a dark color, and the websafe version is hex **CC6666**. A complement of this color would be **83, 166, 166**, and the grayscale version is **108, 108, 108**.

A 20% lighter version of the original color is **224, 134, 132**, and **110, 34, 38** is the 20% darker color. If you saturate the color by 10%, you get **166, 66, 66**, and if you desaturate by 10%, it is **166, 100, 100**.

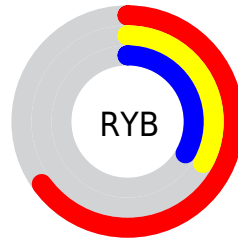
Distribution



Red (65%)

Green (33%)

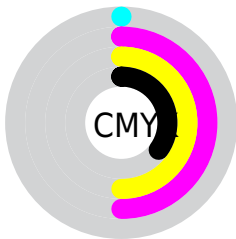
Blue (33%)



Red (65%)

Yellow (33%)

Blue (33%)

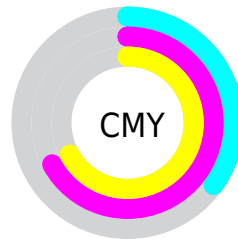


Cyan (0%)

Magenta (50%)

Yellow (50%)

Black (35%)



Cyan (35%)

Magenta (67%)

Yellow (67%)

Brightness & Saturation Gradients

These gradients show how the RGB color 166, 83, 83 changes by changing the brightness by 10 percent. The first figure shows a shift by +10% for each color and the second figure -10%.

Similar to the brightness gradients but the following saturation gradients show a change of the RGB color 166, 83, 83 by changing the saturation by 10% instead.



166, 83, 83



166, 83, 83

255, 255, 255



138, 58, 60



224, 134, 132



110, 34, 38



254, 161, 159



83, 6, 18



255, 189, 185



57, 0, 0



255, 217, 213



28, 0, 1



255, 246, 241



0, 0, 0



166, 83, 83



166, 83, 83



166, 66, 66



166, 100, 100



166, 50, 50




166, 116, 116


 166, 33, 33


 166, 133, 133


 166, 17, 17

 166, 149, 149

 166, 0, 0

 166, 166, 166

 166, 183, 183

 166, 199, 199

 166, 216, 216

 166, 232, 232

Harmonies

Analogous

The Analogous color harmony consists of three colors that are next to each other on the color wheel.



163, 81, 114



166, 83, 83



154, 93, 57

Triad

The Triadic color harmony groups three colors that are evenly spaced from another and form a triangle on the color wheel.



166, 83, 83



61, 120, 70



29, 113, 170

Complementary

The Complementary color scheme is a pair of colors which are on the opposite of each other on the color wheel.



166, 83, 83



83, 166, 166

Split Complementary

Split-complementary colors differ from the complementary color scheme. The scheme consists of three colors, the original color and two neighbors of the complement color.



0, 120, 159



166, 83, 83



0, 123, 101

Square

The Square scheme is like the rectangle color scheme, but the four colors are evenly spaced on the color wheel.



166, 83, 83



100, 114, 48



0, 123, 133



101, 102, 165

Rectangle

The Rectangle color scheme consists of four colors that form a rectangle on the color wheel.



166, 83, 83



139, 100, 46



0, 123, 133



0, 116, 168

Sweetspot

The Sweet Spot groups the original color and five complimentary colors.



166, 83, 83



217, 184, 184



166, 83, 166



110, 90, 90



237, 237, 237



110, 110, 110

Same Dimension

The Same Dimension uses a secret algorithm to generate beautiful new colors.



166, 83, 83



217, 87, 87



166, 124, 83



84, 76, 76



148, 0, 0



20, 0, 0

Inverse Universe

The Inverse Universe completely reimagines the original color for something new.



83, 166, 166



87, 217, 217



83, 124, 166



76, 84, 84



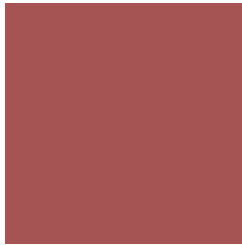
0, 148, 148



0, 20, 20

Previews

White Background



This preview shows how the RGB color 166, 83, 83 looks on a white background.

Color Contrast Check

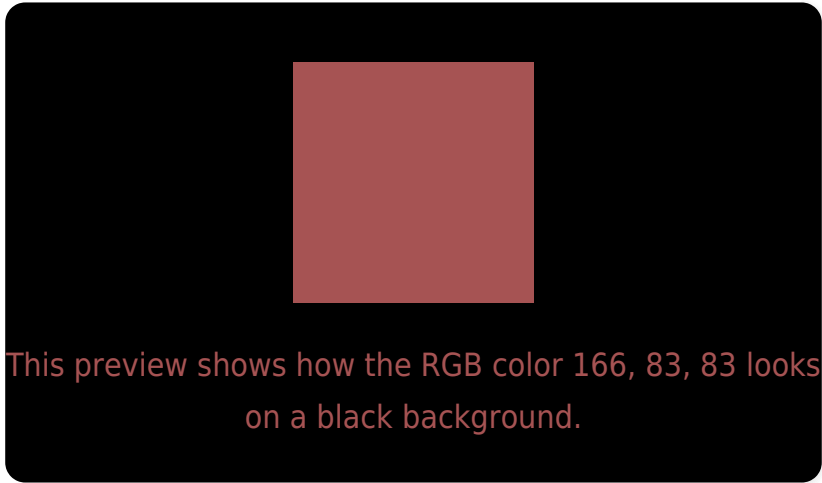
Large Text (above 18pt) WCAG AA ✓ Pass

Any Text WCAG AA ✓ Pass

Large Text (above 18pt) WCAG AAA ✓ Pass

Any Text WCAG AAA × Fail

Black Background



Color Contrast Check

Large Text (above 18pt) WCAG AA ✓ Pass

Any Text WCAG AA × Fail

Large Text (above 18pt) WCAG AAA × Fail

Any Text WCAG AAA × Fail

If you want to check with other color combinations, try the [Color Contrast Checker](#).

RGB 166, 83, 83 Background



This preview shows how black text looks on a background with the RGB color 166, 83, 83.



This preview shows how white text looks on a background with the RGB color 166, 83, 83.

Color Blindness Simulation

Color vision deficiency is a very complex topic, and I could not describe the different causes any better than Wikipedia does, so if you want to learn more, you should check out their [article about color blindness](#).

Dichromacy



Original Color
166, 83, 83

Protanopia
113, 108, 95

Deuteranopia
128, 104, 79



Tritanopia
166, 82, 88

Trichromacy



Original Color

166, 83, 83

Protanomaly

132, 99, 91

Deuteranomaly

142, 96, 80

Tritanomaly

166, 82, 86

Monochromacy



Original Color

166, 83, 83

Achromatopsia

108, 108, 108

Achromatomaly

129, 99, 99

CSS Examples

Text

The CSS property to change the color of the text to RGB 166, 83, 83 is called "color". The color property can be set on classes, ids or directly on the HTML element.

This example shows how text in the color `rgb(166, 83, 83)` looks like.

```
.text, #text, p{  
    color:rgb(166, 83, 83)  
}
```

If you want to add a text shadow in that color use the text-shadow property, you can generate a text shadow directly with our [CSS Text Shadow Generator](#).

Here you see how black text with a 4 pixel rgb(166, 83, 83) colored shadow looks like.

```
.shadow{ text-shadow: 4px 4px 2px rgb(166, 83, 83) }
```

Border

The CSS property to change the border of an element to RGB 166, 83, 83 is called "border". The border property can be set on classes, ids or directly on the HTML element.

This example shows the color as border, it can be applied via the CSS property "border" or "border-color".

```
.border, #border, table{ border:4px solid rgb(166, 83, 83) }
```

If only the border color should be changed use the property `border-color`.

```
.border{ border-color:rgb(166, 83, 83) }
```

If you want to add a box shadow in that color use:

Here you see how a box with a 4 pixel `rgb(166, 83, 83)` colored shadow looks like.

```
.boxshadow{ -moz-box-shadow:4px 4px 4px  
4px rgb(166, 83, 83); -webkit-box-  
shadow:4px 4px 4px 4px rgb(166, 83, 83);  
box-shadow:4px 4px 4px 4px rgb(166, 83,  
83) }
```

Background

The CSS property to change the background color of an element to RGB 166, 83, 83 is called "background". The background property can be set on classes, ids or directly on the HTML element.

```
.background, #background, body{  
background: rgb(166, 83, 83) }
```

If only the background color should be changed can be used:

```
.background{ background-color: rgb(166, 83,  
83) }
```

This example shows the color as background, it is applied via the CSS property "background".

To optimize and compress your CSS code, you can use our [online CSS compressor and optimizer](#) based on csstidy. If you want to create a linear or radial gradient as background or border, check our [CSS Gradient Generator](#).

Hey! You found this booklet
interesting? Support Converting
Colors with the new Membership
Option!

The pro membership hides all ads, plus gives you
double the colors in the color bucket, and more
awesome pro features!

[Learn more, Memberships starting at \\$2.50/m!](#)

**Follow me
on Twitter!**

@ConvertingColor