

Converting Colors

RGB(167, 138, 121)

Have a look what the booklet for
RGB(167, 138, 121) contains.

RGB(167, 138, 121)	3
<i>Conversions</i>	4
<i>Details</i>	6
<i>Harmonies</i>	11
<i>Previews</i>	23
<i>Color Blindness Simulation</i>	26
<i>CSS Examples</i>	29

Color

RGB(167, 138, 121)

Conversions

Conversions Part 1

Format	Color
Hex	A78A79
RGB	167, 138, 121
RGB Percent	65%, 54%, 47%
CMY	0.3451, 0.4588, 0.5255
CMYK	0.00, 0.17, 0.28, 0.35
HSL	22°, 21%, 56%
HSV	22°, 28%, 65%
XYZ	28.4760, 27.7729, 21.9490
YIQ	144.7330, 22.7410, 0.8610

Conversions

Conversions Part 2

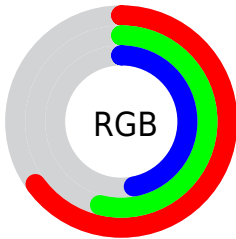
Format	Color
R_{YB}	167, 148, 121
Decimal	10979961
CIE _{Lab}	59.68, 8.35, 13.22
CIE _{LCh}	60, 15.634, 57.729
Yxy	27.7729, 0.3642, 0.3552
Android (android.graphics.Color)	4289170041 (0xFFA78A79)
YUV	144.7330, -11.7004, 19.5282
Hunter-Lab	52.7000, 4.2260, 12.1963

Details

The RGB color **167, 138, 121** is a dark color, and the websafe version is hex **CC9999**. A complement of this color would be **121, 150, 167**, and the grayscale version is **145, 145, 145**.

A 20% lighter version of the original color is **223, 191, 173**, and **114, 88, 72** is the 20% darker color. If you saturate the color by 10%, you get **167, 127, 104**, and if you desaturate by 10%, it is **167, 149, 138**.

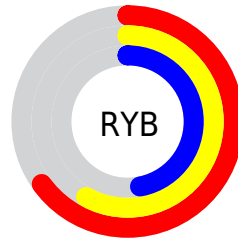
Distribution



Red (65%)

Green (54%)

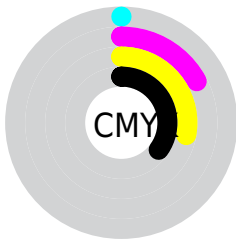
Blue (47%)



Red (65%)

Yellow (58%)

Blue (47%)

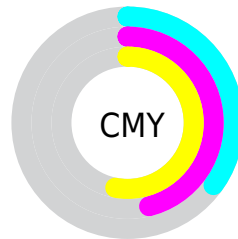


Cyan (0%)

Magenta (17%)

Yellow (28%)

Black (35%)



Cyan (35%)

Magenta (46%)

Yellow (53%)

Brightness & Saturation Gradients

These gradients show how the RGB color 167, 138, 121 changes by changing the brightness by 10 percent. The first figure shows a shift by +10% for each color and the second figure -10%.

Similar to the brightness gradients but the following saturation gradients show a change of the RGB color 167, 138, 121 by changing the saturation by 10% instead.

 167, 138, 121


255, 255, 255

 223, 191, 173

 252, 219, 201

 255, 248, 229

 167, 138, 121

 140, 113, 96

 114, 88, 72

 89, 65, 50

 65, 43, 29

 43, 22, 4

 17, 0, 0

 0, 0, 0

 167, 138, 121

 167, 127, 104

 167, 138, 121

 167, 149, 138

■ 167, 117, 88

■ 167, 159, 154

■ 167, 106, 71

■ 167, 170, 171

■ 167, 96, 54

■ 167, 180, 188

■ 167, 85, 37

■ 167, 191, 204

■ 167, 75, 21

■ 167, 201, 221

■ 167, 64, 4

■ 167, 212, 238

■ 167, 62, 0

■ 167, 222, 255

■ 167, 233, 255

Harmonies

Analogous

The Analogous color harmony consists of three colors that are next to each other on the color wheel.



172, 135, 132



167, 138, 121



156, 142, 116

Triad

The Triadic color harmony groups three colors that are evenly spaced from another and form a triangle on the color wheel.



167, 138, 121



112, 152, 142



145, 141, 168

Complementary

The Complementary color scheme is a pair of colors which are on the opposite of each other on the color wheel.



167, 138, 121



121, 150, 167

Split Complementary

Split-complementary colors differ from the complementary color scheme. The scheme consists of three colors, the original color and two neighbors of the complement color.



127, 145, 171



167, 138, 121



107, 151, 156

Square

The Square scheme is like the rectangle color scheme, but the four colors are evenly spaced on the color wheel.



167, 138, 121



125, 150, 129



112, 149, 167



161, 136, 159

Rectangle

The Rectangle color scheme consists of four colors that form a rectangle on the color wheel.



167, 138, 121



146, 145, 118



112, 149, 167



139, 142, 170

Sweetspot

The Sweet Spot groups the original color and five complimentary colors.



167, 138, 121



217, 206, 199



167, 121, 150



110, 103, 99



237, 237, 237



110, 110, 110

Same Dimension

The Same Dimension uses a secret algorithm to generate beautiful new colors.



167, 138, 121



217, 172, 145



167, 161, 121



84, 79, 76



148, 55, 0



20, 8, 0

Inverse Universe

The Inverse Universe completely reimagines the original color for something new.



121, 150, 167



145, 190, 217



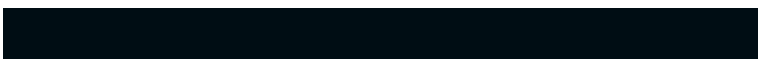
121, 127, 167



76, 81, 84



0, 93, 148



0, 13, 20

Previews

White Background



This preview shows how the RGB color 167, 138, 121 looks on a white background.

Color Contrast Check

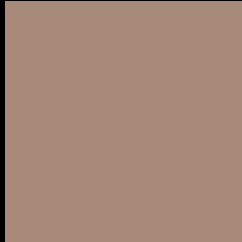
Large Text (above 18pt) WCAG AA ✓ Pass

Any Text WCAG AA × Fail

Large Text (above 18pt) WCAG AAA × Fail

Any Text WCAG AAA × Fail

Black Background



This preview shows how the RGB color 167, 138, 121 looks on a black background.

Color Contrast Check

Large Text (above 18pt) WCAG AA ✓ Pass

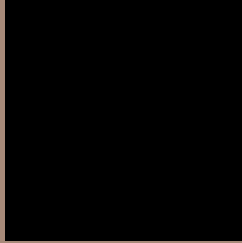
Any Text WCAG AA ✓ Pass

Large Text (above 18pt) WCAG AAA ✓ Pass

Any Text WCAG AAA × Fail

If you want to check with other color combinations, try the [Color Contrast Checker](#).

RGB 167, 138, 121 Background



This preview shows how black text looks on a background with the RGB color 167, 138, 121.



This preview shows how white text looks on a background with the RGB color 167, 138, 121.

Color Blindness Simulation

Color vision deficiency is a very complex topic, and I could not describe the different causes any better than Wikipedia does, so if you want to learn more, you should check out their [article about color blindness](#).

Dichromacy



Original Color
167, 138, 121

Protanopia
151, 144, 124

Deuteranopia
166, 138, 121



Tritanopia
170, 135, 145

Trichromacy



Original Color

167, 138, 121

Protanomaly

157, 142, 123

Deuteranomaly

166, 138, 121

Tritanomaly

169, 136, 136

Monochromacy



Original Color

167, 138, 121

Achromatopsia

145, 145, 145

Achromatomaly

153, 142, 136

CSS Examples

Text

The CSS property to change the color of the text to RGB 167, 138, 121 is called "color". The color property can be set on classes, ids or directly on the HTML element.

This example shows how text in the color `rgb(167, 138, 121)` looks like.

```
.text, #text, p{  
    color:rgb(167, 138, 121)  
}
```

If you want to add a text shadow in that color use the text-shadow property, you can generate a text shadow directly with our [CSS Text Shadow Generator](#).

Here you see how black text with a 4 pixel rgb(167, 138, 121) colored shadow looks like.

```
.shadow{ text-shadow: 4px 4px 2px rgb(167, 138, 121) }
```

Border

The CSS property to change the border of an element to RGB 167, 138, 121 is called "border". The border property can be set on classes, ids or directly on the HTML element.

This example shows the color as border, it can be applied via the CSS property "border" or "border-color".

```
.border, #border, table{ border:4px solid rgb(167, 138, 121) }
```

If only the border color should be changed use the property `border-color`.

```
.border{ border-color:rgb(167, 138, 121) }
```

If you want to add a box shadow in that color use:

Here you see how a box with a 4 pixel `rgb(167, 138, 121)` colored shadow looks like.

```
.boxshadow{ -moz-box-shadow:4px 4px 4px  
4px rgb(167, 138, 121); -webkit-box-  
shadow:4px 4px 4px 4px rgb(167, 138, 121);  
box-shadow:4px 4px 4px 4px rgb(167, 138,  
121) }
```

Background

The CSS property to change the background color of an element to RGB 167, 138, 121 is called "background". The background property can be set on classes, ids or directly on the HTML element.

```
.background, #background, body{  
background: rgb(167, 138, 121) }
```

If only the background color should be changed can be used:

```
.background{ background-color: rgb(167,  
138, 121) }
```

This example shows the color as background, it is applied via the CSS property "background".

To optimize and compress your CSS code, you can use our [online CSS compressor and optimizer](#) based on csstidy. If you want to create a linear or radial gradient as background or border, check our [CSS Gradient Generator](#).

Hey! You found this booklet interesting? Support Converting Colors with the new Membership Option!

The pro membership hides all ads, plus gives you double the colors in the color bucket, and more awesome pro features!

[Learn more, Memberships starting at \\$2.50/m!](#)

**Follow me
on Twitter!**

@ConvertingColor