

Converting Colors

RGB(169, 129, 107)

Have a look what the booklet for
RGB(169, 129, 107) contains.

RGB(169, 129, 107)	3
<i>Conversions</i>	4
<i>Details</i>	6
<i>Harmonies</i>	11
<i>Previews</i>	23
<i>Color Blindness Simulation</i>	26
<i>CSS Examples</i>	29

Color

RGB(169, 129, 107)

Conversions

Conversions Part 1

Format	Color
Hex	A9816B
RGB	169, 129, 107
RGB Percent	66%, 51%, 42%
CMY	0.3373, 0.4941, 0.5804
CMYK	0.00, 0.24, 0.37, 0.34
HSL	21°, 26%, 54%
HSV	21°, 37%, 66%
XYZ	26.8663, 25.1971, 17.3574
YIQ	138.4520, 30.9020, 1.6380

Conversions

Conversions Part 2

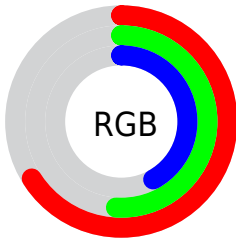
Format	Color
R_{YB}	169, 141, 107
Decimal	11108715
CIE _{Lab}	57.27, 12.33, 17.88
CIE _{LCh}	57, 21.721, 55.397
Yxy	25.1971, 0.3870, 0.3630
Android (android.graphics.Color)	4289298795 (0xFFA9816B)
YUV	138.4520, -15.5058, 26.7906
Hunter-Lab	50.1967, 7.6926, 14.6359

Details

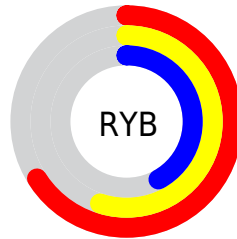
The RGB color **169, 129, 107** is a dark color, and the websafe version is hex **996666**. A complement of this color would be **107, 147, 169**, and the grayscale version is **139, 139, 139**.

A 20% lighter version of the original color is **225, 182, 158**, and **115, 80, 59** is the 20% darker color. If you saturate the color by 10%, you get **169, 118, 90**, and if you desaturate by 10%, it is **169, 140, 124**.

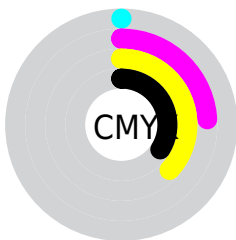
Distribution



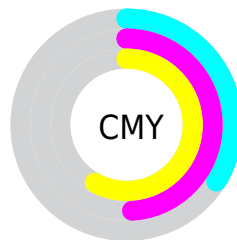
- Red (66%)
- Green (51%)
- Blue (42%)



- Red (66%)
- Yellow (55%)
- Blue (42%)



- Cyan (0%)
- Magenta (24%)
- Yellow (37%)
- Black (34%)



- Cyan (34%)
- Magenta (49%)
- Yellow (58%)

Brightness & Saturation Gradients

These gradients show how the RGB color 169, 129, 107 changes by changing the brightness by 10 percent. The first figure shows a shift by +10% for each color and the second figure -10%.

Similar to the brightness gradients but the following saturation gradients show a change of the RGB color 169, 129, 107 by changing the saturation by 10% instead.

 169, 129, 107

255, 255, 255

 225, 182, 158


 254, 210, 185

 255, 238, 213

 255, 255, 242

 169, 129, 107


 142, 104, 83

 115, 80, 59

 90, 57, 38

 65, 35, 17

 42, 14, 0

 1, 0, 0


 0, 0, 0

 169, 129, 107

 169, 118, 90

 169, 129, 107

 169, 140, 124

 169, 107, 73

 169, 151, 141


 169, 96, 56

 169, 162, 158

 169, 85, 39

 169, 173, 175

 169, 74, 22

 169, 184, 191

 169, 64, 6

 169, 194, 208

 169, 60, 0

 169, 205, 225

 169, 216, 242

 169, 227, 255

Harmonies

Analogous

The Analogous color harmony consists of three colors that are next to each other on the color wheel.



176, 125, 122



169, 129, 107



154, 135, 100

Triad

The Triadic color harmony groups three colors that are evenly spaced from another and form a triangle on the color wheel.



169, 129, 107



93, 148, 134



137, 134, 172

Complementary

The Complementary color scheme is a pair of colors which are on the opposite of each other on the color wheel.



169, 129, 107



107, 147, 169

Split Complementary

Split-complementary colors differ from the complementary color scheme. The scheme consists of three colors, the original color and two neighbors of the complement color.



110, 140, 175



169, 129, 107



82, 148, 153

Square

The Square scheme is like the rectangle color scheme, but the four colors are evenly spaced on the color wheel.



169, 129, 107



113, 146, 115



88, 145, 168



159, 127, 159

Rectangle

The Rectangle color scheme consists of four colors that form a rectangle on the color wheel.



169, 129, 107



141, 139, 101



88, 145, 168



128, 136, 174

Sweetspot

The Sweet Spot groups the original color and five complimentary colors.



169, 129, 107



219, 204, 195



169, 107, 147



110, 100, 95



237, 237, 237



110, 110, 110

Same Dimension

The Same Dimension uses a secret algorithm to generate beautiful new colors.



169, 129, 107



219, 157, 123



169, 160, 107



84, 79, 76



148, 52, 0



20, 7, 0

Inverse Universe

The Inverse Universe completely reimagines the original color for something new.



107, 147, 169



123, 185, 219



107, 116, 169



76, 81, 84



0, 95, 148



0, 13, 20

Previews

White Background



This preview shows how the RGB color 169, 129, 107 looks on a white background.

Color Contrast Check

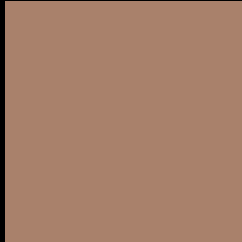
Large Text (above 18pt) WCAG AA ✓ Pass

Any Text WCAG AA ✗ Fail

Large Text (above 18pt) WCAG AAA ✗ Fail

Any Text WCAG AAA ✗ Fail

Black Background



This preview shows how the RGB color 169, 129, 107 looks on a black background.

Color Contrast Check

Large Text (above 18pt) WCAG AA ✓ Pass

Any Text WCAG AA ✓ Pass

Large Text (above 18pt) WCAG AAA ✓ Pass

Any Text WCAG AAA × Fail

If you want to check with other color combinations, try the [Color Contrast Checker](#).

RGB 169, 129, 107 Background



This preview shows how black text looks on a background with the RGB color 169, 129, 107.



This preview shows how white text looks on a background with the RGB color 169, 129, 107.

Color Blindness Simulation

Color vision deficiency is a very complex topic, and I could not describe the different causes any better than Wikipedia does, so if you want to learn more, you should check out their [article about color blindness](#).

Dichromacy



Original Color
169, 129, 107

Protanopia
146, 137, 111

Deuteranopia
162, 132, 106



Tritanopia

172, 125, 135

Trichromacy



Original Color
169, 129, 107

Protanomaly
154, 134, 110

Deuteranomaly
165, 131, 106

Tritanomaly
171, 126, 125

Monochromacy



Original Color
169, 129, 107

Achromatopsia
138, 138, 138

Achromatomaly
149, 135, 127

CSS Examples

Text

The CSS property to change the color of the text to RGB 169, 129, 107 is called "color". The color property can be set on classes, ids or directly on the HTML element.

This example shows how text in the color `rgb(169, 129, 107)` looks like.

```
.text, #text, p{  
    color:rgb(169, 129, 107)  
}
```

If you want to add a text shadow in that color use the text-shadow property, you can generate a text shadow directly with our [CSS Text Shadow Generator](#).

Here you see how black text with a 4 pixel rgb(169, 129, 107) colored shadow looks like.

```
.shadow{ text-shadow: 4px 4px 2px rgb(169, 129, 107) }
```

Border

The CSS property to change the border of an element to RGB 169, 129, 107 is called "border". The border property can be set on classes, ids or directly on the HTML element.

This example shows the color as border, it can be applied via the CSS property "border" or "border-color".

```
.border, #border, table{ border:4px solid rgb(169, 129, 107) }
```

If only the border color should be changed use the property `border-color`.

```
.border{ border-color:rgb(169, 129, 107) }
```

If you want to add a box shadow in that color use:

Here you see how a box with a 4 pixel `rgb(169, 129, 107)` colored shadow looks like.

```
.boxshadow{ -moz-box-shadow:4px 4px 4px 4px rgb(169, 129, 107); -webkit-box-shadow:4px 4px 4px 4px rgb(169, 129, 107); box-shadow:4px 4px 4px 4px rgb(169, 129, 107) }
```

Background

The CSS property to change the background color of an element to RGB 169, 129, 107 is called "background". The background property can be set on classes, ids or directly on the HTML element.

```
.background, #background, body{  
background: rgb(169, 129, 107) }
```

If only the background color should be changed can be used:

```
.background{ background-color: rgb(169,  
129, 107) }
```

This example shows the color as background, it is applied via the CSS property "background".

To optimize and compress your CSS code, you can use our [online CSS compressor and optimizer](#) based on csstidy. If you want to create a linear or radial gradient as background or border, check our [CSS Gradient Generator](#).

Hey! You found this booklet interesting? Support Converting Colors with the new Membership Option!

The pro membership hides all ads, plus gives you double the colors in the color bucket, and more awesome pro features!

[Learn more, Memberships starting at \\$2.50/m!](#)

**Follow me
on Twitter!**

@ConvertingColor