

Converting Colors

RGB(169, 138, 108)

Have a look what the booklet for
RGB(169, 138, 108) contains.

RGB(169, 138, 108)	3
<i>Conversions</i>	4
<i>Details</i>	6
<i>Harmonies</i>	11
<i>Previews</i>	23
<i>Color Blindness Simulation</i>	26
<i>CSS Examples</i>	29

Color

RGB(169, 138, 108)

Conversions

Conversions Part 1

Format	Color
Hex	A98A6C
RGB	169, 138, 108
RGB Percent	66%, 54%, 42%
CMY	0.3373, 0.4588, 0.5765
CMYK	0.00, 0.18, 0.36, 0.34
HSL	30°, 26%, 54%
HSV	30°, 36%, 66%
XYZ	28.1574, 27.6947, 18.0489
YIQ	143.8490, 28.1060, -2.7580

Conversions

Conversions Part 2

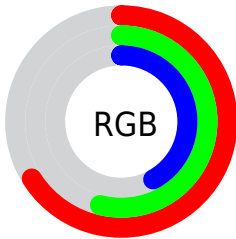
Format	Color
R_{YB}	169, 167, 108
Decimal	11111020
CIE _{Lab}	59.61, 7.40, 20.50
CIE _{LCh}	60, 21.795, 70.148
Yxy	27.6947, 0.3810, 0.3748
Android (android.graphics.Color)	4289301100 (0xFFA98A6C)
YUV	143.8490, -17.6736, 22.0574
Hunter-Lab	52.6257, 3.4115, 16.5035

Details

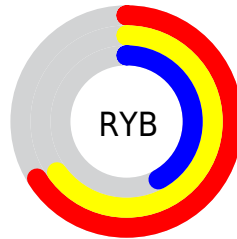
The RGB color **169, 138, 108** is a dark color, and the websafe version is hex **CC9966**. A complement of this color would be **108, 139, 169**, and the grayscale version is **144, 144, 144**.

A 20% lighter version of the original color is **225, 191, 160**, and **116, 88, 60** is the 20% darker color. If you saturate the color by 10%, you get **169, 129, 91**, and if you desaturate by 10%, it is **169, 147, 125**.

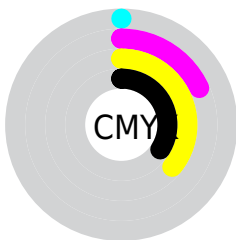
Distribution



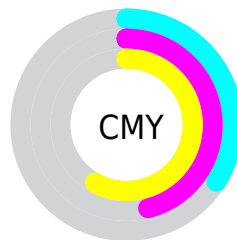
- Red (66%)
- Green (54%)
- Blue (42%)



- Red (66%)
- Yellow (65%)
- Blue (42%)



- Cyan (0%)
- Magenta (18%)
- Yellow (36%)
- Black (34%)



- Cyan (34%)
- Magenta (46%)
- Yellow (58%)

Brightness & Saturation Gradients

These gradients show how the RGB color 169, 138, 108 changes by changing the brightness by 10 percent. The first figure shows a shift by +10% for each color and the second figure -10%.

Similar to the brightness gradients but the following saturation gradients show a change of the RGB color 169, 138, 108 by changing the saturation by 10% instead.

 169, 138, 108


255, 255, 255

 225, 191, 160

 254, 219, 187


 255, 248, 214

 255, 255, 243

 169, 138, 108

 142, 113, 84

 116, 88, 60

 90, 65, 38

 65, 43, 17

 43, 22, 0

 14, 0, 0

 0, 0, 0

 169, 138, 108

 169, 129, 91

 169, 138, 108

 169, 147, 125

■ 169, 121, 74

■ 169, 155, 142

■ 169, 112, 57

■ 169, 164, 159

■ 169, 104, 40

■ 169, 172, 176

■ 169, 95, 23

■ 169, 181, 192

■ 169, 86, 7

■ 169, 190, 209

■ 169, 83, 0

■ 169, 198, 226

■ 169, 207, 243

■ 169, 215, 255

Harmonies

Analogous

The Analogous color harmony consists of three colors that are next to each other on the color wheel.



180, 132, 120



169, 138, 108



151, 144, 106

Triad

The Triadic color harmony groups three colors that are evenly spaced from another and form a triangle on the color wheel.



169, 138, 108



91, 154, 150



155, 136, 173

Complementary

The Complementary color scheme is a pair of colors which are on the opposite of each other on the color wheel.



169, 138, 108



108, 139, 169

Split Complementary

Split-complementary colors differ from the complementary color scheme. The scheme consists of three colors, the original color and two neighbors of the complement color.



129, 143, 181



169, 138, 108



88, 153, 168

Square

The Square scheme is like the rectangle color scheme, but the four colors are evenly spaced on the color wheel.



169, 138, 108



108, 153, 130



104, 149, 179



174, 131, 157

Rectangle

The Rectangle color scheme consists of four colors that form a rectangle on the color wheel.



169, 138, 108



137, 148, 110



104, 149, 179



147, 139, 177

Sweetspot

The Sweet Spot groups the original color and five complimentary colors.



169, 138, 108



219, 207, 195



169, 108, 140



110, 102, 95



237, 237, 237



110, 110, 110

Same Dimension

The Same Dimension uses a secret algorithm to generate beautiful new colors.



169, 138, 108



219, 171, 125



169, 168, 108



84, 80, 76



148, 73, 0



20, 10, 0

Inverse Universe

The Inverse Universe completely reimagines the original color for something new.



108, 139, 169



125, 173, 219



108, 109, 169



76, 80, 84



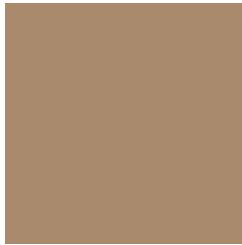
0, 75, 148



0, 10, 20

Previews

White Background



This preview shows how the RGB color 169, 138, 108 looks on a white background.

Color Contrast Check

Large Text (above 18pt) WCAG AA ✓ Pass

Any Text WCAG AA ✗ Fail

Large Text (above 18pt) WCAG AAA ✗ Fail

Any Text WCAG AAA ✗ Fail

Black Background



This preview shows how the RGB color 169, 138, 108 looks on a black background.

Color Contrast Check

Large Text (above 18pt) WCAG AA ✓ Pass

Any Text WCAG AA ✓ Pass

Large Text (above 18pt) WCAG AAA ✓ Pass

Any Text WCAG AAA × Fail

If you want to check with other color combinations, try the [Color Contrast Checker](#).

RGB 169, 138, 108 Background



This preview shows how black text looks on a background with the RGB color 169, 138, 108.



This preview shows how white text looks on a background with the RGB color 169, 138, 108.

Color Blindness Simulation

Color vision deficiency is a very complex topic, and I could not describe the different causes any better than Wikipedia does, so if you want to learn more, you should check out their [article about color blindness](#).

Dichromacy



Original Color


169, 138, 108

Protanopia

153, 144, 110

Deuteranopia

169, 138, 108



Tritanopia
173, 133, 143

Trichromacy



Original Color

169, 138, 108

Protanomaly

159, 142, 109

Deuteranomaly

169, 138, 108

Tritanomaly

172, 135, 130

Monochromacy



Original Color

169, 138, 108

Achromatopsia

144, 144, 144

Achromatomaly

153, 142, 131

CSS Examples

Text

The CSS property to change the color of the text to RGB 169, 138, 108 is called "color". The color property can be set on classes, ids or directly on the HTML element.

This example shows how text in the color `rgb(169, 138, 108)` looks like.

```
.text, #text, p{  
    color:rgb(169, 138, 108)  
}
```

If you want to add a text shadow in that color use the text-shadow property, you can generate a text shadow directly with our [CSS Text Shadow Generator](#).

Here you see how black text with a 4 pixel rgb(169, 138, 108) colored shadow looks like.

```
.shadow{ text-shadow: 4px 4px 2px rgb(169, 138, 108) }
```

Border

The CSS property to change the border of an element to RGB 169, 138, 108 is called "border". The border property can be set on classes, ids or directly on the HTML element.

This example shows the color as border, it can be applied via the CSS property "border" or "border-color".

```
.border, #border, table{ border:4px solid rgb(169, 138, 108) }
```

If only the border color should be changed use the property `border-color`.

```
.border{ border-color:rgb(169, 138, 108) }
```

If you want to add a box shadow in that color use:

Here you see how a box with a 4 pixel `rgb(169, 138, 108)` colored shadow looks like.

```
.boxshadow{ -moz-box-shadow:4px 4px 4px  
4px rgb(169, 138, 108); -webkit-box-  
shadow:4px 4px 4px 4px rgb(169, 138, 108);  
box-shadow:4px 4px 4px 4px rgb(169, 138,  
108) }
```

Background

The CSS property to change the background color of an element to RGB 169, 138, 108 is called "background". The background property can be set on classes, ids or directly on the HTML element.

```
.background, #background, body{  
background: rgb(169, 138, 108) }
```

If only the background color should be changed can be used:

```
.background{ background-color: rgb(169,  
138, 108) }
```

This example shows the color as background, it is applied via the CSS property "background".

To optimize and compress your CSS code, you can use our [online CSS compressor and optimizer](#) based on csstidy. If you want to create a linear or radial gradient as background or border, check our [CSS Gradient Generator](#).

Hey! You found this booklet interesting? Support Converting Colors with the new Membership Option!

The pro membership hides all ads, plus gives you double the colors in the color bucket, and more awesome pro features!

[Learn more, Memberships starting at \\$2.50/m!](#)

**Follow me
on Twitter!**

@ConvertingColor