

Converting Colors

RGB(169, 146, 130)

Have a look what the booklet for
RGB(169, 146, 130) contains.

RGB(169, 146, 130)	3
<i>Conversions</i>	4
<i>Details</i>	6
<i>Harmonies</i>	11
<i>Previews</i>	23
<i>Color Blindness Simulation</i>	26
<i>CSS Examples</i>	29

Color

RGB(169, 146, 130)

Conversions

Conversions Part 1

Format	Color
Hex	A99282
RGB	169, 146, 130
RGB Percent	66%, 57%, 51%
CMY	0.3373, 0.4275, 0.4902
CMYK	0.00, 0.14, 0.23, 0.34
HSL	25°, 18%, 59%
HSV	25°, 23%, 66%
XYZ	30.6703, 30.6045, 25.4098
YIQ	151.0530, 18.8440, -0.1000

Conversions

Conversions Part 2

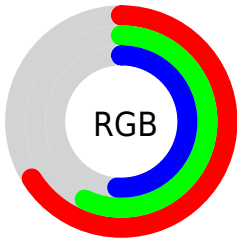
Format	Color
RYB	169, 157, 130
Decimal	11113090
CIELab	62.17, 6.00, 11.65
CIELCh	62, 13.101, 62.744
Yxy	30.6045, 0.3538, 0.3531
Android (android.graphics.Color)	4289303170 (0xFFA99282)
YUV	151.0530, -10.3791, 15.7395
Hunter-Lab	55.3213, 2.1487, 11.4922

Details

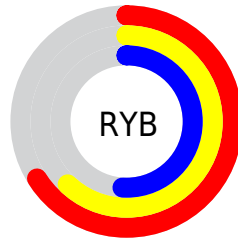
The RGB color **169, 146, 130** is a light color, and the websafe version is hex **999999**. A complement of this color would be **130, 153, 169**, and the grayscale version is **151, 151, 151**.

A 20% lighter version of the original color is **225, 200, 183**, and **116, 96, 81** is the 20% darker color. If you saturate the color by 10%, you get **169, 136, 113**, and if you desaturate by 10%, it is **169, 156, 147**.

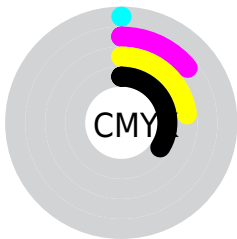
Distribution



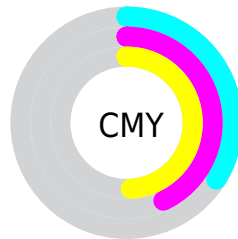
- Red (66%)
- Green (57%)
- Blue (51%)



- Red (66%)
- Yellow (62%)
- Blue (51%)



- Cyan (0%)
- Magenta (14%)
- Yellow (23%)
- Black (34%)



- Cyan (34%)
- Magenta (43%)
- Yellow (49%)

Brightness & Saturation Gradients

These gradients show how the RGB color 169, 146, 130 changes by changing the brightness by 10 percent. The first figure shows a shift by +10% for each color and the second figure -10%.

Similar to the brightness gradients but the following saturation gradients show a change of the RGB color 169, 146, 130 by changing the saturation by 10% instead.

 169, 146, 130


255, 255, 255

 225, 200, 183


 253, 228, 211

 255, 255, 239

 169, 146, 130

 142, 120, 105

 116, 96, 81

 91, 72, 58

 67, 49, 36

 45, 28, 15

 23, 3, 0

 0, 0, 0

 169, 146, 130

 169, 136, 113


 169, 146, 130


 169, 156, 147

 169, 126, 96

 169, 166, 164

 169, 116, 79

 169, 176, 181

 169, 106, 62

 169, 186, 198

 169, 96, 45

 169, 196, 214

 169, 86, 29

 169, 206, 231

 169, 76, 12

 169, 216, 248

 169, 69, 0

 169, 226, 255

 169, 236, 255

Harmonies

Analogous

The Analogous color harmony consists of three colors that are next to each other on the color wheel.



175, 143, 138



169, 146, 130



159, 150, 127

Triad

The Triadic color harmony groups three colors that are evenly spaced from another and form a triangle on the color wheel.



169, 146, 130



123, 157, 151



154, 147, 170

Complementary

The Complementary color scheme is a pair of colors which are on the opposite of each other on the color wheel.



169, 146, 130



130, 153, 169

Split Complementary

Split-complementary colors differ from the complementary color scheme. The scheme consists of three colors, the original color and two neighbors of the complement color.



139, 151, 173



169, 146, 130



120, 157, 162

Square

The Square scheme is like the rectangle color scheme, but the four colors are evenly spaced on the color wheel.



169, 146, 130



133, 156, 139



126, 154, 170



167, 144, 161

Rectangle

The Rectangle color scheme consists of four colors that form a rectangle on the color wheel.



169, 146, 130



150, 152, 129



126, 154, 170



149, 148, 172

Sweetspot

The Sweet Spot groups the original color and five complimentary colors.



169, 146, 130



219, 210, 204



169, 130, 153



110, 104, 101



237, 237, 237



110, 110, 110

Same Dimension

The Same Dimension uses a secret algorithm to generate beautiful new colors.



169, 146, 130



219, 183, 158



169, 165, 130



84, 79, 76



148, 61, 0



20, 8, 0

Inverse Universe

The Inverse Universe completely reimagines the original color for something new.



130, 153, 169



158, 194, 219



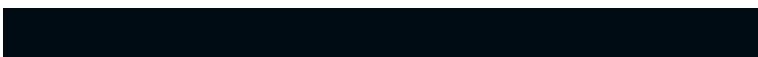
130, 134, 169



76, 81, 84



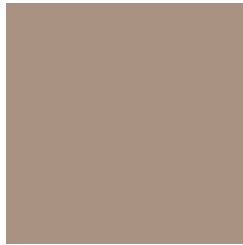
0, 87, 148



0, 12, 20

Previews

White Background



This preview shows how the RGB color 169, 146, 130 looks on a white background.

Color Contrast Check

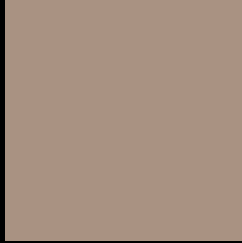
Large Text (above 18pt) WCAG AA × Fail

Any Text WCAG AA × Fail

Large Text (above 18pt) WCAG AAA × Fail

Any Text WCAG AAA × Fail

Black Background



This preview shows how the RGB color 169, 146, 130 looks on a black background.

Color Contrast Check

Large Text (above 18pt) WCAG AA ✓ Pass

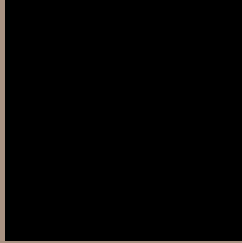
Any Text WCAG AA ✓ Pass

Large Text (above 18pt) WCAG AAA ✓ Pass

Any Text WCAG AAA ✓ Pass

If you want to check with other color combinations, try the [Color Contrast Checker](#).

RGB 169, 146, 130 Background



This preview shows how black text looks on a background with the RGB color 169, 146, 130.



This preview shows how white text looks on a background with the RGB color 169, 146, 130.

Color Blindness Simulation

Color vision deficiency is a very complex topic, and I could not describe the different causes any better than Wikipedia does, so if you want to learn more, you should check out their [article about color blindness](#).

Dichromacy



Original Color


169, 146, 130

Protanopia

157, 150, 132

Deuteranopia

172, 145, 130



Tritanopia
172, 143, 154

Trichromacy



Original Color

169, 146, 130

Protanomaly

161, 149, 131

Deuteranomaly

171, 145, 130

Tritanomaly

171, 144, 145

Monochromacy



Original Color

169, 146, 130

Achromatopsia

151, 151, 151

Achromatomaly

158, 149, 143

CSS Examples

Text

The CSS property to change the color of the text to RGB 169, 146, 130 is called "color". The color property can be set on classes, ids or directly on the HTML element.

This example shows how text in the color `rgb(169, 146, 130)` looks like.

```
.text, #text, p{  
    color:rgb(169, 146, 130)  
}
```

If you want to add a text shadow in that color use the text-shadow property, you can generate a text shadow directly with our [CSS Text Shadow Generator](#).

Here you see how black text with a 4 pixel rgb(169, 146, 130) colored shadow looks like.

```
.shadow{ text-shadow: 4px 4px 2px rgb(169, 146, 130) }
```

Border

The CSS property to change the border of an element to RGB 169, 146, 130 is called "border". The border property can be set on classes, ids or directly on the HTML element.

This example shows the color as border, it can be applied via the CSS property "border" or "border-color".

```
.border, #border, table{ border:4px solid rgb(169, 146, 130) }
```

If only the border color should be changed use the property `border-color`.

```
.border{ border-color:rgb(169, 146, 130) }
```

If you want to add a box shadow in that color use:

Here you see how a box with a 4 pixel `rgb(169, 146, 130)` colored shadow looks like.

```
.boxshadow{ -moz-box-shadow:4px 4px 4px  
4px rgb(169, 146, 130); -webkit-box-  
shadow:4px 4px 4px 4px rgb(169, 146, 130);  
box-shadow:4px 4px 4px 4px rgb(169, 146,  
130) }
```

Background

The CSS property to change the background color of an element to RGB 169, 146, 130 is called "background". The background property can be set on classes, ids or directly on the HTML element.

```
.background, #background, body{  
background: rgb(169, 146, 130) }
```

If only the background color should be changed can be used:

```
.background{ background-color: rgb(169,  
146, 130) }
```

This example shows the color as background, it is applied via the CSS property "background".

To optimize and compress your CSS code, you can use our [online CSS compressor and optimizer](#) based on csstidy. If you want to create a linear or radial gradient as background or border, check our [CSS Gradient Generator](#).

Hey! You found this booklet interesting? Support Converting Colors with the new Membership Option!

The pro membership hides all ads, plus gives you double the colors in the color bucket, and more awesome pro features!

[Learn more, Memberships starting at \\$2.50/m!](#)

**Follow me
on Twitter!**

@ConvertingColor