

Converting Colors

RGB(169, 60, 101)

Have a look what the booklet for
RGB(169, 60, 101) contains.

RGB(169, 60, 101)	3
<i>Conversions</i>	4
<i>Details</i>	6
<i>Harmonies</i>	11
<i>Previews</i>	23
<i>Color Blindness Simulation</i>	26
<i>CSS Examples</i>	29

Color

RGB(169, 60, 101)

Conversions

Conversions Part 1

Format	Color
Hex	A93C65
RGB	169, 60, 101
RGB Percent	66%, 24%, 40%
CMY	0.3373, 0.7647, 0.6039
CMYK	0.00, 0.64, 0.40, 0.34
HSL	337°, 48%, 45%
HSV	337°, 64%, 66%
XYZ	20.3270, 12.6063, 13.6738
YIQ	97.2650, 51.8030, 35.8590

Conversions

Conversions Part 2

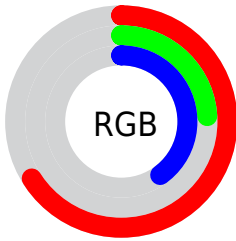
Format	Color
R_{YB}	169, 60, 101
Decimal	11091045
CIE _{Lab}	42.16, 48.30, 0.13
CIE _{LCh}	42, 48.301, 0.151
Yxy	12.6063, 0.4361, 0.2705
Android (android.graphics.Color)	4289281125 (0xFFA93C65)
YUV	97.2650, 1.8414, 62.9116
Hunter-Lab	35.5054, 40.0577, 2.0200

Details

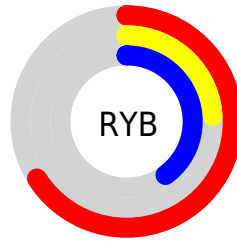
The RGB color **169, 60, 101** is a dark color, and the websafe version is hex **993366**. A complement of this color would be **60, 169, 128**, and the grayscale version is **97, 97, 97**.

A 20% lighter version of the original color is **228, 113, 152**, and **112, 0, 55** is the 20% darker color. If you saturate the color by 10%, you get **169, 43, 90**, and if you desaturate by 10%, it is **169, 77, 112**.

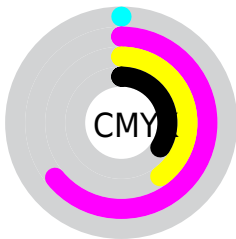
Distribution



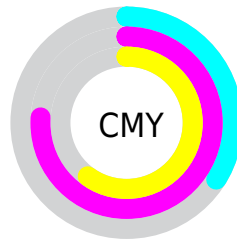
- Red (66%)
- Green (24%)
- Blue (40%)



- Red (66%)
- Yellow (24%)
- Blue (40%)



- Cyan (0%)
- Magenta (64%)
- Yellow (40%)
- Black (34%)




- Cyan (34%)
- Magenta (76%)
- Yellow (60%)

Brightness & Saturation Gradients

These gradients show how the RGB color 169, 60, 101 changes by changing the brightness by 10 percent. The first figure shows a shift by +10% for each color and the second figure -10%.

Similar to the brightness gradients but the following saturation gradients show a change of the RGB color 169, 60, 101 by changing the saturation by 10% instead.

 169, 60, 101

 169, 60, 101

255, 255, 255

 140, 31, 77

 228, 113, 152

 112, 0, 55

 255, 141, 178

 85, 0, 33

 255, 168, 206

 60, 0, 10

 255, 196, 234

 28, 0, 1

 255, 225, 255

 0, 0, 0

255, 254, 255


 169, 60, 101

 169, 60, 101

 169, 43, 90

 169, 77, 112

 169, 26, 80

 169, 94, 122

 169, 9, 69


 169, 111, 133

 169, 0, 64

 169, 128, 143

 169, 144, 154

 169, 161, 164

 169, 178, 175

 169, 195, 185

 169, 212, 196

Harmonies

Analogous

The Analogous color harmony consists of three colors that are next to each other on the color wheel.



147, 71, 140



169, 60, 101



168, 66, 62

Triad

The Triadic color harmony groups three colors that are evenly spaced from another and form a triangle on the color wheel.



169, 60, 101



79, 109, 22



0, 114, 168

Complementary

The Complementary color scheme is a pair of colors which are on the opposite of each other on the color wheel.



169, 60, 101



60, 169, 128

Split Complementary

Split-complementary colors differ from the complementary color scheme. The scheme consists of three colors, the original color and two neighbors of the complement color.



0, 118, 138



169, 60, 101



2, 115, 58

Square

The Square scheme is like the rectangle color scheme, but the four colors are evenly spaced on the color wheel.



169, 60, 101



119, 98, 4



0, 118, 98



0, 104, 179

Rectangle

The Rectangle color scheme consists of four colors that form a rectangle on the color wheel.



169, 60, 101



158, 77, 39



0, 118, 98



0, 115, 160

Sweetspot

The Sweet Spot groups the original color and five complimentary colors.



169, 60, 101



219, 178, 193



127, 60, 169



110, 84, 94



237, 237, 237



110, 110, 110

Same Dimension

The Same Dimension uses a secret algorithm to generate beautiful new colors.



169, 60, 101



219, 50, 114



169, 73, 60



84, 76, 79



148, 0, 56



20, 0, 8

Inverse Universe

The Inverse Universe completely reimagines the original color for something new.



169, 60, 101



219, 50, 114



60, 156, 169



84, 76, 79



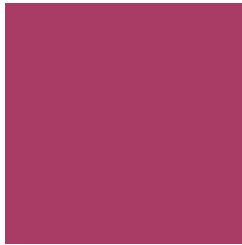
148, 0, 56



20, 0, 8

Previews

White Background



This preview shows how the RGB color 169, 60, 101 looks on a white background.

Color Contrast Check

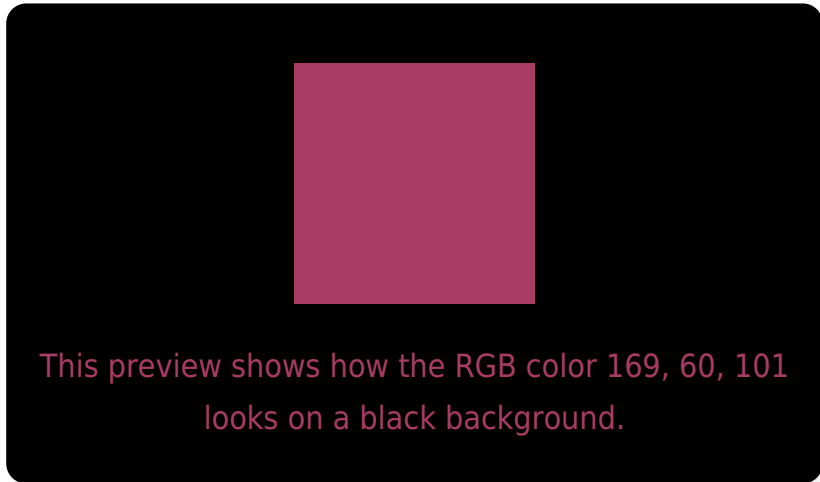
Large Text (above 18pt) WCAG AA ✓ Pass

Any Text WCAG AA ✓ Pass

Large Text (above 18pt) WCAG AAA ✓ Pass

Any Text WCAG AAA × Fail

Black Background



Color Contrast Check

Large Text (above 18pt) WCAG AA ✓ Pass

Any Text WCAG AA × Fail

Large Text (above 18pt) WCAG AAA × Fail

Any Text WCAG AAA × Fail

If you want to check with other color combinations, try the [Color Contrast Checker](#).

RGB 169, 60, 101 Background



This preview shows how black text looks on a background with the RGB color 169, 60, 101.

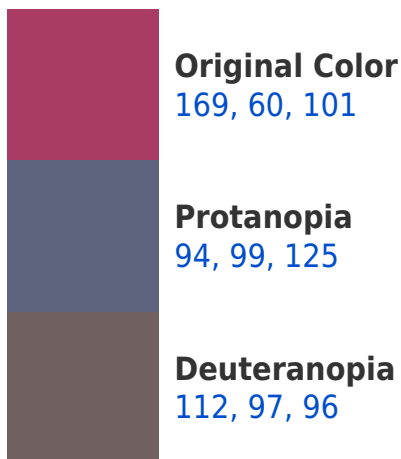


This preview shows how white text looks on a background with the RGB color 169, 60, 101.

Color Blindness Simulation

Color vision deficiency is a very complex topic, and I could not describe the different causes any better than Wikipedia does, so if you want to learn more, you should check out their [article about color blindness](#).

Dichromacy





Tritanopia
167, 67, 71

Trichromacy



Original Color
169, 60, 101

Protanomaly
121, 85, 116

Deuteranomaly
133, 84, 98

Tritanomaly
168, 64, 82

Monochromacy



Original Color
169, 60, 101

Achromatopsia
97, 97, 97

Achromatomaly
123, 84, 98

CSS Examples

Text

The CSS property to change the color of the text to RGB 169, 60, 101 is called "color". The color property can be set on classes, ids or directly on the HTML element.

This example shows how text in the color `rgb(169, 60, 101)` looks like.

```
.text, #text, p{  
    color:rgb(169, 60, 101)  
}
```

If you want to add a text shadow in that color use the text-shadow property, you can generate a text shadow directly with our [CSS Text Shadow Generator](#).

Here you see how black text with a 4 pixel rgb(169, 60, 101) colored shadow looks like.

```
.shadow{ text-shadow: 4px 4px 2px rgb(169, 60, 101) }
```

Border

The CSS property to change the border of an element to RGB 169, 60, 101 is called "border". The border property can be set on classes, ids or directly on the HTML element.

This example shows the color as border, it can be applied via the CSS property "border" or "border-color".

```
.border, #border, table{ border:4px solid rgb(169, 60, 101) }
```

If only the border color should be changed use the property `border-color`.

```
.border{ border-color:rgb(169, 60, 101) }
```

If you want to add a box shadow in that color use:

Here you see how a box with a 4 pixel `rgb(169, 60, 101)` colored shadow looks like.

```
.boxshadow{ -moz-box-shadow:4px 4px 4px  
4px rgb(169, 60, 101); -webkit-box-  
shadow:4px 4px 4px 4px rgb(169, 60, 101);  
box-shadow:4px 4px 4px 4px rgb(169, 60,  
101) }
```

Background

The CSS property to change the background color of an element to RGB 169, 60, 101 is called "background". The background property can be set on classes, ids or directly on the HTML element.

```
.background, #background, body{  
background: rgb(169, 60, 101) }
```

If only the background color should be changed can be used:

```
.background{ background-color: rgb(169, 60,  
101) }
```

This example shows the color as background, it is applied via the CSS property "background".

To optimize and compress your CSS code, you can use our [online CSS compressor and optimizer](#) based on csstidy. If you want to create a linear or radial gradient as background or border, check our [CSS Gradient Generator](#).

Hey! You found this booklet interesting? Support Converting Colors with the new Membership Option!

The pro membership hides all ads, plus gives you double the colors in the color bucket, and more awesome pro features!

[Learn more, Memberships starting at \\$2.50/m!](#)

**Follow me
on Twitter!**

@ConvertingColor