

Converting Colors

RGB(170, 122, 76)

Have a look what the booklet for
RGB(170, 122, 76) contains.

RGB(170, 122, 76)	3
<i>Conversions</i>	4
<i>Details</i>	6
<i>Harmonies</i>	11
<i>Previews</i>	23
<i>Color Blindness Simulation</i>	26
<i>CSS Examples</i>	29

Color

RGB(170, 122, 76)

Conversions

Conversions Part 1

Format	Color
Hex	AA7A4C
RGB	170, 122, 76
RGB Percent	67%, 48%, 30%
CMY	0.3333, 0.5216, 0.7020
CMYK	0.00, 0.28, 0.55, 0.33
HSL	29°, 38%, 48%
HSV	29°, 55%, 67%
XYZ	24.8416, 22.9869, 9.9651
YIQ	131.1080, 43.3740, -4.1300

Conversions

Conversions Part 2

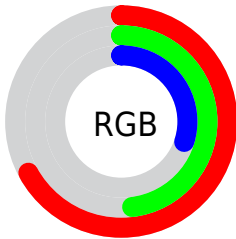
Format	Color
RYB	170, 166, 76
Decimal	11172428
CIELab	55.06, 13.39, 32.39
CIElCh	55, 35.045, 67.532
Yxy	22.9869, 0.4298, 0.3977
Android (android.graphics.Color)	4289362508 (0xFFAA7A4C)
YUV	131.1080, -27.1682, 34.1083
Hunter-Lab	47.9447, 8.5831, 21.2381

Details

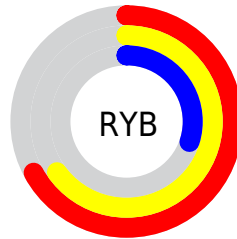
The RGB color **170, 122, 76** is a dark color, and the websafe version is hex **996633**. A complement of this color would be **76, 124, 170**, and the grayscale version is **131, 131, 131**.

A 20% lighter version of the original color is **228, 174, 126**, and **115, 73, 30** is the 20% darker color. If you saturate the color by 10%, you get **170, 113, 59**, and if you desaturate by 10%, it is **170, 131, 93**.

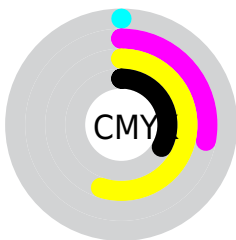
Distribution



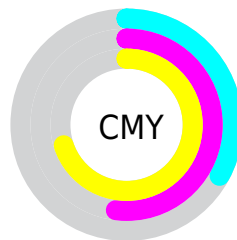
- Red (67%)
- Green (48%)
- Blue (30%)



- Red (67%)
- Yellow (65%)
- Blue (30%)



- Cyan (0%)
- Magenta (28%)
- Yellow (55%)
- Black (33%)



- Cyan (33%)
- Magenta (52%)
- Yellow (70%)

Brightness & Saturation Gradients

These gradients show how the RGB color 170, 122, 76 changes by changing the brightness by 10 percent. The first figure shows a shift by +10% for each color and the second figure -10%.

Similar to the brightness gradients but the following saturation gradients show a change of the RGB color 170, 122, 76 by changing the saturation by 10% instead.



170, 122, 76



170, 122, 76

255, 255, 255



142, 97, 52



228, 174, 126



115, 73, 30



255, 202, 152



88, 51, 6



255, 230, 179



63, 29, 0



255, 255, 207



38, 7, 0



255, 255, 235



0, 0, 0



170, 122, 76



170, 122, 76



170, 113, 59



170, 131, 93



170, 105, 42



170, 139, 110

■ 170, 96, 25

■ 170, 148, 127

■ 170, 87, 8

■ 170, 157, 144

■ 170, 83, 0

■ 170, 165, 161

■ 170, 174, 178

■ 170, 183, 195

■ 170, 191, 212

■ 170, 200, 229

Harmonies

Analogous

The Analogous color harmony consists of three colors that are next to each other on the color wheel.



187, 112, 96



170, 122, 76



144, 133, 70

Triad

The Triadic color harmony groups three colors that are evenly spaced from another and form a triangle on the color wheel.



170, 122, 76



2, 148, 139



145, 121, 180

Complementary

The Complementary color scheme is a pair of colors which are on the opposite of each other on the color wheel.



170, 122, 76



76, 124, 170

Split Complementary

Split-complementary colors differ from the complementary color scheme. The scheme consists of three colors, the original color and two neighbors of the complement color.



98, 132, 192



170, 122, 76



0, 146, 168

Square

The Square scheme is like the rectangle color scheme, but the four colors are evenly spaced on the color wheel.



170, 122, 76



72, 146, 108



31, 141, 187



176, 111, 156

Rectangle

The Rectangle color scheme consists of four colors that form a rectangle on the color wheel.



170, 122, 76



122, 138, 77



31, 141, 187



131, 125, 186

Sweetspot

The Sweet Spot groups the original color and five complimentary colors.



170, 122, 76



222, 203, 184



170, 76, 125



112, 101, 90



240, 240, 240



112, 112, 112

Same Dimension

The Same Dimension uses a secret algorithm to generate beautiful new colors.



170, 122, 76



222, 147, 75



170, 168, 76



84, 80, 76



148, 72, 0



20, 10, 0

Inverse Universe

The Inverse Universe completely reimagines the original color for something new.



76, 124, 170



75, 150, 222



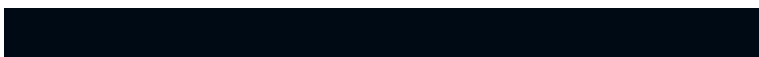
76, 78, 170



76, 80, 84



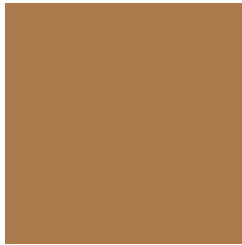
0, 76, 148



0, 10, 20

Previews

White Background



This preview shows how the RGB color 170, 122, 76 looks on a white background.

Color Contrast Check

Large Text (above 18pt) WCAG AA ✓ Pass

Any Text WCAG AA ✗ Fail

Large Text (above 18pt) WCAG AAA ✗ Fail

Any Text WCAG AAA ✗ Fail

Black Background



This preview shows how the RGB color 170, 122, 76 looks on a black background.

Color Contrast Check

Large Text (above 18pt) WCAG AA ✓ Pass

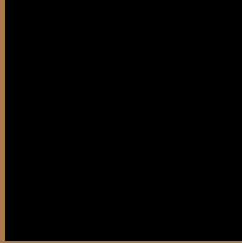
Any Text WCAG AA ✓ Pass

Large Text (above 18pt) WCAG AAA ✓ Pass

Any Text WCAG AAA × Fail

If you want to check with other color combinations, try the [Color Contrast Checker](#).

RGB 170, 122, 76 Background



This preview shows how black text looks on a background with the RGB color 170, 122, 76.



This preview shows how white text looks on a background with the RGB color 170, 122, 76.

Color Blindness Simulation

Color vision deficiency is a very complex topic, and I could not describe the different causes any better than Wikipedia does, so if you want to learn more, you should check out their [article about color blindness](#).

Dichromacy



Original Color


170, 122, 76

Protanopia

144, 132, 80

Deuteranopia

161, 126, 75



Tritanopia
174, 116, 125

Trichromacy



Original Color

170, 122, 76

Protanomaly

153, 128, 79

Deuteranomaly

164, 125, 75

Tritanomaly

173, 118, 107

Monochromacy



Original Color

170, 122, 76

Achromatopsia

131, 131, 131

Achromatomaly

145, 128, 111

CSS Examples

Text

The CSS property to change the color of the text to RGB 170, 122, 76 is called "color". The color property can be set on classes, ids or directly on the HTML element.

This example shows how text in the color `rgb(170, 122, 76)` looks like.

```
.text, #text, p{  
    color:rgb(170, 122, 76)  
}
```

If you want to add a text shadow in that color use the text-shadow property, you can generate a text shadow directly with our [CSS Text Shadow Generator](#).

Here you see how black text with a 4 pixel rgb(170, 122, 76) colored shadow looks like.

```
.shadow{ text-shadow: 4px 4px 2px rgb(170, 122, 76) }
```

Border

The CSS property to change the border of an element to RGB 170, 122, 76 is called "border". The border property can be set on classes, ids or directly on the HTML element.

This example shows the color as border, it can be applied via the CSS property "border" or "border-color".

```
.border, #border, table{ border:4px solid rgb(170, 122, 76) }
```

If only the border color should be changed use the property `border-color`.

```
.border{ border-color:rgb(170, 122, 76) }
```

If you want to add a box shadow in that color use:

Here you see how a box with a 4 pixel `rgb(170, 122, 76)` colored shadow looks like.

```
.boxshadow{ -moz-box-shadow:4px 4px 4px  
4px rgb(170, 122, 76); -webkit-box-  
shadow:4px 4px 4px 4px rgb(170, 122, 76);  
box-shadow:4px 4px 4px 4px rgb(170, 122,  
76) }
```

Background

The CSS property to change the background color of an element to RGB 170, 122, 76 is called "background". The background property can be set on classes, ids or directly on the HTML element.

```
.background, #background, body{  
background: rgb(170, 122, 76) }
```

If only the background color should be changed can be used:

```
.background{ background-color: rgb(170,  
122, 76) }
```

This example shows the color as background, it is applied via the CSS property "background".

To optimize and compress your CSS code, you can use our [online CSS compressor and optimizer](#) based on csstidy. If you want to create a linear or radial gradient as background or border, check our [CSS Gradient Generator](#).

Hey! You found this booklet interesting? Support Converting Colors with the new Membership Option!

The pro membership hides all ads, plus gives you double the colors in the color bucket, and more awesome pro features!

[Learn more, Memberships starting at \\$2.50/m!](#)

**Follow me
on Twitter!**

@ConvertingColor