

Converting Colors

RGB(172, 139, 135)

Have a look what the booklet for
RGB(172, 139, 135) contains.

RGB(172, 139, 135)	3
<i>Conversions</i>	4
<i>Details</i>	6
<i>Harmonies</i>	11
<i>Previews</i>	23
<i>Color Blindness Simulation</i>	26
<i>CSS Examples</i>	29

Color

RGB(172, 139, 135)

Conversions

Conversions Part 1

Format	Color
Hex	AC8B87
RGB	172, 139, 135
RGB Percent	67%, 55%, 53%
CMY	0.3255, 0.4549, 0.4706
CMYK	0.00, 0.19, 0.22, 0.33
HSL	6°, 18%, 60%
HSV	6°, 22%, 67%
XYZ	30.6191, 28.9852, 26.9026
YIQ	148.4110, 20.9520, 5.7520

Conversions

Conversions Part 2

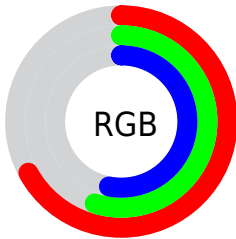
Format	Color
R_{YB}	172, 139, 135
Decimal	11307911
CIE _{Lab}	60.77, 11.86, 6.86
CIE _{LCh}	61, 13.701, 30.048
Yxy	28.9852, 0.3539, 0.3351
Android (android.graphics.Color)	4289497991 (0xFFAC8B87)
YUV	148.4110, -6.6116, 20.6876
Hunter-Lab	53.8379, 7.3015, 8.0595

Details

The RGB color **172, 139, 135** is a dark color, and the websafe version is hex **CC9999**. A complement of this color would be **135, 168, 172**, and the grayscale version is **148, 148, 148**.

A 20% lighter version of the original color is **228, 193, 188**, and **119, 89, 85** is the 20% darker color. If you saturate the color by 10%, you get **172, 124, 118**, and if you desaturate by 10%, it is **172, 154, 152**.

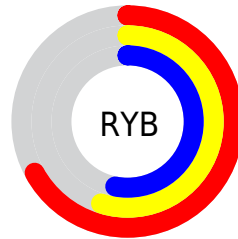
Distribution



Red (67%)

Green (55%)

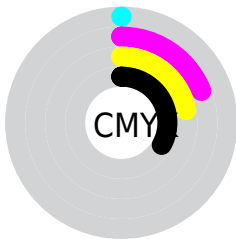
Blue (53%)



Red (67%)

Yellow (55%)

Blue (53%)

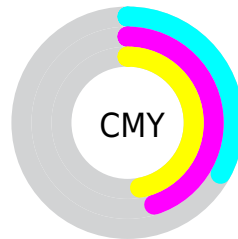


Cyan (0%)

Magenta (19%)

Yellow (22%)

Black (33%)



Cyan (33%)

Magenta (45%)

Yellow (47%)

Brightness & Saturation Gradients

These gradients show how the RGB color 172, 139, 135 changes by changing the brightness by 10 percent. The first figure shows a shift by +10% for each color and the second figure -10%.

Similar to the brightness gradients but the following saturation gradients show a change of the RGB color 172, 139, 135 by changing the saturation by 10% instead.

 172, 139, 135

255, 255, 255


 228, 193, 188


 255, 220, 216

 255, 249, 244

 172, 139, 135

 145, 113, 110

 119, 89, 85

 94, 65, 62

 70, 43, 40


 46, 22, 20

 27, 0, 0

 0, 0, 0

 172, 139, 135

 172, 124, 118

 172, 139, 135

 172, 154, 152

■ 172, 108, 101

■ 172, 170, 169

■ 172, 93, 83

■ 172, 185, 187

■ 172, 78, 66

■ 172, 200, 204

■ 172, 62, 49

■ 172, 216, 221

■ 172, 47, 32

■ 172, 231, 238

■ 172, 32, 15

■ 172, 246, 255

■ 172, 19, 0

■ 172, 255, 255

Harmonies

Analogous

The Analogous color harmony consists of three colors that are next to each other on the color wheel.



171, 138, 147



172, 139, 135



167, 142, 126

Triad

The Triadic color harmony groups three colors that are evenly spaced from another and form a triangle on the color wheel.



172, 139, 135



129, 152, 134



133, 148, 170

Complementary

The Complementary color scheme is a pair of colors which are on the opposite of each other on the color wheel.



172, 139, 135



135, 168, 172

Split Complementary

Split-complementary colors differ from the complementary color scheme. The scheme consists of three colors, the original color and two neighbors of the complement color.



120, 151, 167



172, 139, 135



119, 154, 146

Square

The Square scheme is like the rectangle color scheme, but the four colors are evenly spaced on the color wheel.



172, 139, 135



143, 150, 126



115, 153, 158



149, 143, 167

Rectangle

The Rectangle color scheme consists of four colors that form a rectangle on the color wheel.



172, 139, 135



160, 144, 123



115, 153, 158



128, 149, 170

Sweetspot

The Sweet Spot groups the original color and five complimentary colors.



172, 139, 135



224, 212, 211



172, 135, 168



112, 105, 104



240, 240, 240



112, 112, 112

Same Dimension

The Same Dimension uses a secret algorithm to generate beautiful new colors.



172, 139, 135



224, 172, 166



172, 157, 135



87, 79, 78



150, 16, 0



23, 2, 0

Inverse Universe

The Inverse Universe completely reimagines the original color for something new.



135, 168, 172



166, 218, 224



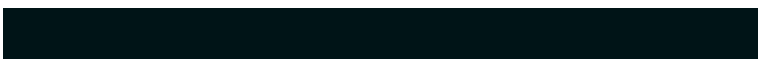
135, 150, 172



78, 86, 87



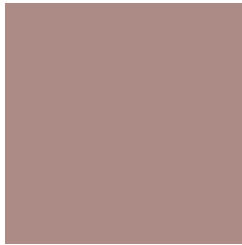
0, 134, 150



0, 20, 23

Previews

White Background



This preview shows how the RGB color 172, 139, 135 looks on a white background.

Color Contrast Check

Large Text (above 18pt) WCAG AA ✓ Pass

Any Text WCAG AA ✗ Fail

Large Text (above 18pt) WCAG AAA ✗ Fail

Any Text WCAG AAA ✗ Fail

Black Background



This preview shows how the RGB color 172, 139, 135 looks on a black background.

Color Contrast Check

Large Text (above 18pt) WCAG AA ✓ Pass

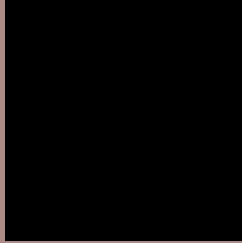
Any Text WCAG AA ✓ Pass

Large Text (above 18pt) WCAG AAA ✓ Pass

Any Text WCAG AAA × Fail

If you want to check with other color combinations, try the [Color Contrast Checker](#).

RGB 172, 139, 135 Background



This preview shows how black text looks on a background with the RGB color 172, 139, 135.



This preview shows how white text looks on a background with the RGB color 172, 139, 135.

Color Blindness Simulation

Color vision deficiency is a very complex topic, and I could not describe the different causes any better than Wikipedia does, so if you want to learn more, you should check out their [article about color blindness](#).

Dichromacy



Original Color
172, 139, 135

Protanopia
151, 146, 139

Deuteranopia
165, 142, 135



Tritanopia
174, 137, 148

Trichromacy



Original Color

172, 139, 135

Protanomaly

159, 143, 138

Deuteranomaly

168, 141, 135

Tritanomaly

173, 138, 143

Monochromacy



Original Color

172, 139, 135

Achromatopsia

148, 148, 148

Achromatomaly

157, 145, 143

CSS Examples

Text

The CSS property to change the color of the text to RGB 172, 139, 135 is called "color". The color property can be set on classes, ids or directly on the HTML element.

This example shows how text in the color rgb(172, 139, 135) looks like.

```
.text, #text, p{  
    color:rgb(172, 139, 135)  
}
```

If you want to add a text shadow in that color use the text-shadow property, you can generate a text shadow directly with our [CSS Text Shadow Generator](#).

Here you see how black text with a 4 pixel rgb(172, 139, 135) colored shadow looks like.

```
.shadow{ text-shadow: 4px 4px 2px rgb(172, 139, 135) }
```

Border

The CSS property to change the border of an element to RGB 172, 139, 135 is called "border". The border property can be set on classes, ids or directly on the HTML element.

This example shows the color as border, it can be applied via the CSS property "border" or "border-color".

```
.border, #border, table{ border:4px solid rgb(172, 139, 135) }
```

If only the border color should be changed use the property `border-color`.

```
.border{ border-color:rgb(172, 139, 135) }
```

If you want to add a box shadow in that color use:

Here you see how a box with a 4 pixel `rgb(172, 139, 135)` colored shadow looks like.

```
.boxshadow{ -moz-box-shadow:4px 4px 4px  
4px rgb(172, 139, 135); -webkit-box-  
shadow:4px 4px 4px 4px rgb(172, 139, 135);  
box-shadow:4px 4px 4px 4px rgb(172, 139,  
135) }
```

Background

The CSS property to change the background color of an element to RGB 172, 139, 135 is called "background". The background property can be set on classes, ids or directly on the HTML element.

```
.background, #background, body{  
background: rgb(172, 139, 135) }
```

If only the background color should be changed can be used:

```
.background{ background-color: rgb(172,  
139, 135) }
```

This example shows the color as background, it is applied via the CSS property "background".

To optimize and compress your CSS code, you can use our [online CSS compressor and optimizer](#) based on csstidy. If you want to create a linear or radial gradient as background or border, check our [CSS Gradient Generator](#).

Hey! You found this booklet interesting? Support Converting Colors with the new Membership Option!

The pro membership hides all ads, plus gives you double the colors in the color bucket, and more awesome pro features!

[Learn more, Memberships starting at \\$2.50/m!](#)

**Follow me
on Twitter!**

@ConvertingColor