

Converting Colors

RGB(173, 138, 112)

Have a look what the booklet for
RGB(173, 138, 112) contains.

RGB(173, 138, 112)	3
<i>Conversions</i>	4
<i>Details</i>	6
<i>Harmonies</i>	11
<i>Previews</i>	23
<i>Color Blindness Simulation</i>	26
<i>CSS Examples</i>	29

Color

RGB(173, 138, 112)

Conversions

Conversions Part 1

Format	Color
Hex	AD8A70
RGB	173, 138, 112
RGB Percent	68%, 54%, 44%
CMY	0.3216, 0.4588, 0.5608
CMYK	0.00, 0.20, 0.35, 0.32
HSL	26°, 27%, 56%
HSV	26°, 35%, 68%
XYZ	29.2467, 28.2310, 19.2369
YIQ	145.5010, 29.2060, -0.6660

Conversions

Conversions Part 2

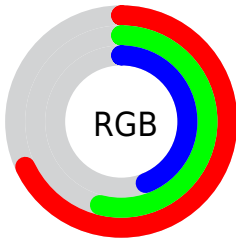
Format	Color
RYB	173, 157, 112
Decimal	11373168
CIELab	60.10, 9.55, 18.98
CIElCh	60, 21.247, 63.275
Yxy	28.2310, 0.3812, 0.3680
Android (android.graphics.Color)	4289563248 (0xFFAD8A70)
YUV	145.5010, -16.5160, 24.1166
Hunter-Lab	53.1329, 5.2717, 15.7269

Details

The RGB color **173, 138, 112** is a dark color, and the websafe version is hex **CC9999**. A complement of this color would be **112, 147, 173**, and the grayscale version is **146, 146, 146**.

A 20% lighter version of the original color is **229, 191, 164**, and **119, 88, 64** is the 20% darker color. If you saturate the color by 10%, you get **173, 128, 95**, and if you desaturate by 10%, it is **173, 148, 129**.

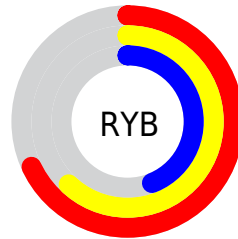
Distribution



Red (68%)

Green (54%)

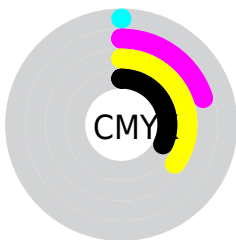
Blue (44%)



Red (68%)

Yellow (62%)

Blue (44%)

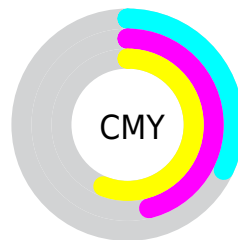


Cyan (0%)

Magenta (20%)

Yellow (35%)

Black (32%)



Cyan (32%)

Magenta (46%)

Yellow (56%)

Brightness & Saturation Gradients

These gradients show how the RGB color 173, 138, 112 changes by changing the brightness by 10 percent. The first figure shows a shift by +10% for each color and the second figure -10%.

Similar to the brightness gradients but the following saturation gradients show a change of the RGB color 173, 138, 112 by changing the saturation by 10% instead.

 173, 138, 112

255, 255, 255

 229, 191, 164

 255, 219, 191

 255, 248, 219

 255, 255, 247

 173, 138, 112

 146, 113, 87

 119, 88, 64

 94, 65, 42

 69, 43, 21

 46, 22, 0

 21, 0, 0

 0, 0, 0

 173, 138, 112

 173, 128, 95

 173, 138, 112

 173, 148, 129

■ 173, 118, 77

■ 173, 158, 147

■ 173, 108, 60

■ 173, 168, 164

■ 173, 98, 43

■ 173, 178, 181

■ 173, 88, 25

■ 173, 188, 199

■ 173, 78, 8

■ 173, 198, 216

■ 173, 74, 0

■ 173, 207, 233

■ 173, 217, 250

■ 173, 227, 255

Harmonies

Analogous

The Analogous color harmony consists of three colors that are next to each other on the color wheel.



182, 133, 125



173, 138, 112



157, 144, 108

Triad

The Triadic color harmony groups three colors that are evenly spaced from another and form a triangle on the color wheel.



173, 138, 112



97, 155, 146



151, 139, 176

Complementary

The Complementary color scheme is a pair of colors which are on the opposite of each other on the color wheel.



173, 138, 112



112, 147, 173

Split Complementary

Split-complementary colors differ from the complementary color scheme. The scheme consists of three colors, the original color and two neighbors of the complement color.



125, 146, 182



173, 138, 112



91, 155, 165

Square

The Square scheme is like the rectangle color scheme, but the four colors are evenly spaced on the color wheel.



173, 138, 112



115, 154, 127



102, 151, 178



171, 134, 162

Rectangle

The Rectangle color scheme consists of four colors that form a rectangle on the color wheel.



173, 138, 112



143, 148, 110



102, 151, 178



142, 142, 179

Sweetspot

The Sweet Spot groups the original color and five complimentary colors.



173, 138, 112



224, 210, 200



173, 112, 148



112, 104, 98



240, 240, 240



112, 112, 112

Same Dimension

The Same Dimension uses a secret algorithm to generate beautiful new colors.



173, 138, 112



224, 170, 130



173, 168, 112



87, 82, 78



150, 64, 0



23, 10, 0

Inverse Universe

The Inverse Universe completely reimagines the original color for something new.



112, 147, 173



130, 184, 224



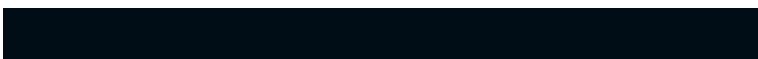
112, 117, 173



78, 83, 87



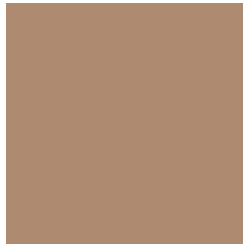
0, 86, 150



0, 13, 23

Previews

White Background



This preview shows how the RGB color 173, 138, 112 looks on a white background.

Color Contrast Check

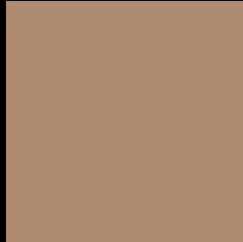
Large Text (above 18pt) WCAG AA ✓ Pass

Any Text WCAG AA × Fail

Large Text (above 18pt) WCAG AAA × Fail

Any Text WCAG AAA × Fail

Black Background



This preview shows how the RGB color 173, 138, 112 looks on a black background.

Color Contrast Check

Large Text (above 18pt) WCAG AA ✓ Pass

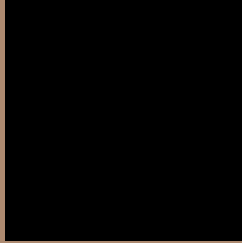
Any Text WCAG AA ✓ Pass

Large Text (above 18pt) WCAG AAA ✓ Pass

Any Text WCAG AAA × Fail

If you want to check with other color combinations, try the [Color Contrast Checker](#).

RGB 173, 138, 112 Background



This preview shows how black text looks on a background with the RGB color 173, 138, 112.



This preview shows how white text looks on a background with the RGB color 173, 138, 112.

Color Blindness Simulation

Color vision deficiency is a very complex topic, and I could not describe the different causes any better than Wikipedia does, so if you want to learn more, you should check out their [article about color blindness](#).


Dichromacy



Original Color
173, 138, 112

Protanopia
154, 145, 115

Deuteranopia
170, 139, 112



Tritanopia
176, 134, 144

Trichromacy



Original Color

173, 138, 112

Protanomaly

161, 142, 114

Deuteranomaly

171, 139, 112

Tritanomaly

175, 135, 132

Monochromacy



Original Color

173, 138, 112

Achromatopsia

146, 146, 146

Achromatomaly

156, 143, 134

CSS Examples

Text

The CSS property to change the color of the text to RGB 173, 138, 112 is called "color". The color property can be set on classes, ids or directly on the HTML element.

This example shows how text in the color `rgb(173, 138, 112)` looks like.

```
.text, #text, p{  
    color:rgb(173, 138, 112)  
}
```

If you want to add a text shadow in that color use the text-shadow property, you can generate a text shadow directly with our [CSS Text Shadow Generator](#).

Here you see how black text with a 4 pixel rgb(173, 138, 112) colored shadow looks like.

```
.shadow{ text-shadow: 4px 4px 2px rgb(173, 138, 112) }
```

Border

The CSS property to change the border of an element to RGB 173, 138, 112 is called "border". The border property can be set on classes, ids or directly on the HTML element.

This example shows the color as border, it can be applied via the CSS property "border" or "border-color".

```
.border, #border, table{ border:4px solid rgb(173, 138, 112) }
```

If only the border color should be changed use the property `border-color`.

```
.border{ border-color:rgb(173, 138, 112) }
```

If you want to add a box shadow in that color use:

Here you see how a box with a 4 pixel `rgb(173, 138, 112)` colored shadow looks like.

```
.boxshadow{ -moz-box-shadow:4px 4px 4px  
4px rgb(173, 138, 112); -webkit-box-  
shadow:4px 4px 4px 4px rgb(173, 138, 112);  
box-shadow:4px 4px 4px 4px rgb(173, 138,  
112) }
```

Background

The CSS property to change the background color of an element to RGB 173, 138, 112 is called "background". The background property can be set on classes, ids or directly on the HTML element.

```
.background, #background, body{  
background: rgb(173, 138, 112) }
```

If only the background color should be changed can be used:

```
.background{ background-color: rgb(173,  
138, 112) }
```

This example shows the color as background, it is applied via the CSS property "background".

To optimize and compress your CSS code, you can use our [online CSS compressor and optimizer](#) based on csstidy. If you want to create a linear or radial gradient as background or border, check our [CSS Gradient Generator](#).

Hey! You found this booklet interesting? Support Converting Colors with the new Membership Option!

The pro membership hides all ads, plus gives you double the colors in the color bucket, and more awesome pro features!

[Learn more, Memberships starting at \\$2.50/m!](#)

**Follow me
on Twitter!**

@ConvertingColor