

Converting Colors

RGB(174, 117, 67)

Have a look what the booklet for
RGB(174, 117, 67) contains.

RGB(174, 117, 67)	3
<i>Conversions</i>	4
<i>Details</i>	6
<i>Harmonies</i>	11
<i>Previews</i>	23
<i>Color Blindness Simulation</i>	26
<i>CSS Examples</i>	29

Color

RGB(174, 117, 67)

Conversions

Conversions Part 1

Format	Color
Hex	AE7543
RGB	174, 117, 67
RGB Percent	68%, 46%, 26%
CMY	0.3176, 0.5412, 0.7373
CMYK	0.00, 0.33, 0.61, 0.32
HSL	28°, 44%, 47%
HSV	28°, 61%, 68%
XYZ	24.8300, 22.1265, 8.2723
YIQ	128.3430, 50.0220, -3.4660

Conversions

Conversions Part 2

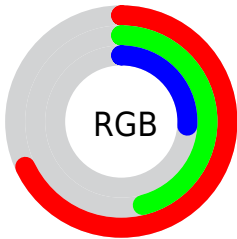
Format	Color
RYB	174, 161, 67
Decimal	11433283
CIELab	54.16, 17.21, 36.26
CIELCh	54, 40.138, 64.605
Yxy	22.1265, 0.4496, 0.4006
Android (android.graphics.Color)	4289623363 (0xFFAE7543)
YUV	128.3430, -30.2421, 40.0412
Hunter-Lab	47.0388, 11.9053, 22.5003

Details

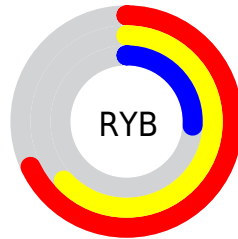
The RGB color **174, 117, 67** is a dark color, and the websafe version is hex **996633**. A complement of this color would be **67, 124, 174**, and the grayscale version is **129, 129, 129**.

A 20% lighter version of the original color is **232, 169, 116**, and **118, 69, 20** is the 20% darker color. If you saturate the color by 10%, you get **174, 108, 50**, and if you desaturate by 10%, it is **174, 126, 84**.

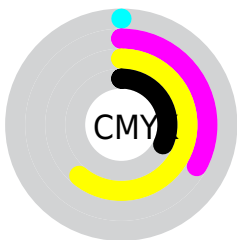
Distribution



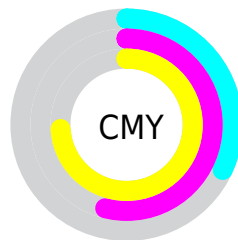
- Red (68%)
- Green (46%)
- Blue (26%)



- Red (68%)
- Yellow (63%)
- Blue (26%)



- Cyan (0%)
- Magenta (33%)
- Yellow (61%)
- Black (32%)



- Cyan (32%)
- Magenta (54%)
- Yellow (74%)

Brightness & Saturation Gradients

These gradients show how the RGB color 174, 117, 67 changes by changing the brightness by 10 percent. The first figure shows a shift by +10% for each color and the second figure -10%.

Similar to the brightness gradients but the following saturation gradients show a change of the RGB color 174, 117, 67 by changing the saturation by 10% instead.



174, 117, 67



174, 117, 67

255, 255, 255



146, 92, 44



232, 169, 116



118, 69, 20



255, 197, 142



91, 46, 0



255, 225, 169



64, 25, 0



255, 253, 197



39, 1, 0



255, 255, 225



0, 0, 0

255, 255, 254



174, 117, 67



174, 117, 67



174, 108, 50



174, 126, 84

■ 174, 98, 32

■ 174, 136, 102

■ 174, 89, 15

■ 174, 145, 119

■ 174, 81, 0

■ 174, 154, 137

■ 174, 163, 154

■ 174, 173, 171

■ 174, 182, 189

■ 174, 191, 206

■ 174, 200, 224

Harmonies

Analogous

The Analogous color harmony consists of three colors that are next to each other on the color wheel.



192, 105, 92



174, 117, 67



145, 129, 58

Triad

The Triadic color harmony groups three colors that are evenly spaced from another and form a triangle on the color wheel.



174, 117, 67



0, 147, 134



139, 118, 187

Complementary

The Complementary color scheme is a pair of colors which are on the opposite of each other on the color wheel.



174, 117, 67



67, 124, 174

Split Complementary

Split-complementary colors differ from the complementary color scheme. The scheme consists of three colors, the original color and two neighbors of the complement color.



80, 131, 198



174, 117, 67



0, 146, 168

Square

The Square scheme is like the rectangle color scheme, but the four colors are evenly spaced on the color wheel.



174, 117, 67



62, 145, 99



0, 141, 191



177, 106, 160

Rectangle

The Rectangle color scheme consists of four colors that form a rectangle on the color wheel.



174, 117, 67



122, 136, 64



0, 141, 191



122, 123, 193

Sweetspot

The Sweet Spot groups the original color and five complimentary colors.



174, 117, 67



227, 205, 186



174, 67, 124



115, 101, 90



242, 242, 242



115, 115, 115

Same Dimension

The Same Dimension uses a secret algorithm to generate beautiful new colors.



174, 117, 67



227, 137, 59



174, 170, 67



87, 82, 78



150, 70, 0



23, 11, 0

Inverse Universe

The Inverse Universe completely reimagines the original color for something new.



67, 124, 174



59, 148, 227



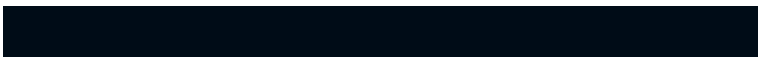
67, 71, 174



78, 83, 87



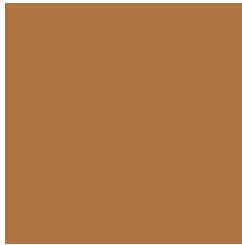
0, 80, 150



0, 12, 23

Previews

White Background



This preview shows how the RGB color 174, 117, 67 looks on a white background.

Color Contrast Check

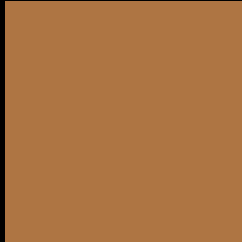
Large Text (above 18pt) WCAG AA ✓ Pass

Any Text WCAG AA ✗ Fail

Large Text (above 18pt) WCAG AAA ✗ Fail

Any Text WCAG AAA ✗ Fail

Black Background



This preview shows how the RGB color 174, 117, 67 looks on a black background.

Color Contrast Check

Large Text (above 18pt) WCAG AA ✓ Pass

Any Text WCAG AA ✓ Pass

Large Text (above 18pt) WCAG AAA ✓ Pass

Any Text WCAG AAA × Fail

If you want to check with other color combinations, try the [Color Contrast Checker](#).

RGB 174, 117, 67 Background



This preview shows how black text looks on a background with the RGB color 174, 117, 67.



This preview shows how white text looks on a background with the RGB color 174, 117, 67.

Color Blindness Simulation

Color vision deficiency is a very complex topic, and I could not describe the different causes any better than Wikipedia does, so if you want to learn more, you should check out their [article about color blindness](#).

Dichromacy



Original Color

174, 117, 67

Protanopia

143, 130, 71

Deuteranopia

160, 124, 65



Tritanopia
178, 111, 119

Trichromacy



Original Color

174, 117, 67

Protanomaly

154, 125, 70

Deuteranomaly

165, 121, 66

Tritanomaly

177, 113, 100

Monochromacy



Original Color

174, 117, 67

Achromatopsia

128, 128, 128

Achromatomaly

145, 124, 106

CSS Examples

Text

The CSS property to change the color of the text to RGB 174, 117, 67 is called "color". The color property can be set on classes, ids or directly on the HTML element.

This example shows how text in the color `rgb(174, 117, 67)` looks like.

```
.text, #text, p{  
    color:rgb(174, 117, 67)  
}
```

If you want to add a text shadow in that color use the text-shadow property, you can generate a text shadow directly with our [CSS Text Shadow Generator](#).

Here you see how black text with a 4 pixel rgb(174, 117, 67) colored shadow looks like.

```
.shadow{ text-shadow: 4px 4px 2px rgb(174, 117, 67) }
```

Border

The CSS property to change the border of an element to RGB 174, 117, 67 is called "border". The border property can be set on classes, ids or directly on the HTML element.

This example shows the color as border, it can be applied via the CSS property "border" or "border-color".

```
.border, #border, table{ border:4px solid rgb(174, 117, 67) }
```

If only the border color should be changed use the property border-color.

```
.border{ border-color:rgb(174, 117, 67) }
```

If you want to add a box shadow in that color use:

Here you see how a box with a 4 pixel rgb(174, 117, 67) colored shadow looks like.

```
.boxshadow{ -moz-box-shadow:4px 4px 4px  
4px rgb(174, 117, 67); -webkit-box-  
shadow:4px 4px 4px 4px rgb(174, 117, 67);  
box-shadow:4px 4px 4px 4px rgb(174, 117,  
67) }
```

Background

The CSS property to change the background color of an element to RGB 174, 117, 67 is called "background". The background property can be set on classes, ids or directly on the HTML element.

```
.background, #background, body{  
background: rgb(174, 117, 67) }
```

If only the background color should be changed can be used:

```
.background{ background-color: rgb(174,  
117, 67) }
```

This example shows the color as background, it is applied via the CSS property "background".

To optimize and compress your CSS code, you can use our [online CSS compressor and optimizer](#) based on csstidy. If you want to create a linear or radial gradient as background or border, check our [CSS Gradient Generator](#).

Hey! You found this booklet interesting? Support Converting Colors with the new Membership Option!

The pro membership hides all ads, plus gives you double the colors in the color bucket, and more awesome pro features!

[Learn more, Memberships starting at \\$2.50/m!](#)

**Follow me
on Twitter!**

@ConvertingColor