

Converting Colors

RGB(175, 170, 181)

Have a look what the booklet for
RGB(175, 170, 181) contains.

RGB(175, 170, 181)	3
<i>Conversions</i>	4
<i>Details</i>	6
<i>Harmonies</i>	11
<i>Previews</i>	23
<i>Color Blindness Simulation</i>	26
<i>CSS Examples</i>	29

Color

RGB(175, 170, 181)

Conversions

Conversions Part 1

Format	Color
Hex	AFAAB5
RGB	175, 170, 181
RGB Percent	69%, 67%, 71%
CMY	0.3137, 0.3333, 0.2902
CMYK	0.03, 0.06, 0.00, 0.29
HSL	267°, 7%, 69%
HSV	267°, 6%, 71%
XYZ	40.3944, 41.1996, 49.5394
YIQ	172.7490, -0.5510, 4.4810

Conversions

Conversions Part 2

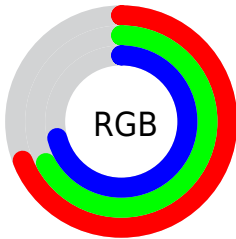
Format	Color
RYB	175, 170, 181
Decimal	11512501
CIELab	70.32, 3.87, -5.01
CIELCh	70, 6.328, 307.727
Yxy	41.1996, 0.3080, 0.3142
Android (android.graphics.Color)	4289702581 (0xFFAFAAB5)
YUV	172.7490, 4.0677, 1.9741
Hunter-Lab	64.1869, 0.0073, -0.8291

Details

The RGB color **175, 170, 181** is a light color, and the websafe version is hex **999999**. A complement of this color would be **176, 181, 170**, and the grayscale version is **173, 173, 173**.

A 20% lighter version of the original color is **231, 225, 237**, and **123, 118, 128** is the 20% darker color. If you saturate the color by 10%, you get **165, 152, 181**, and if you desaturate by 10%, it is **185, 188, 181**.

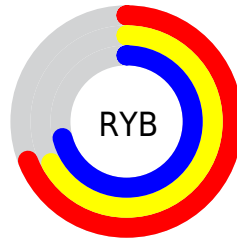
Distribution



Red (69%)

Green (67%)

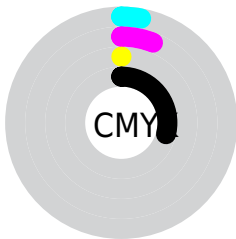
Blue (71%)



Red (69%)

Yellow (67%)

Blue (71%)

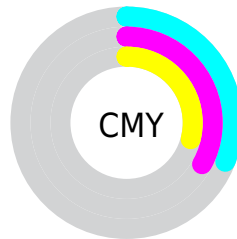


Cyan (3%)

Magenta (6%)

Yellow (0%)

Black (29%)



Cyan (31%)

Magenta (33%)

Yellow (29%)

Brightness & Saturation Gradients

These gradients show how the RGB color 175, 170, 181 changes by changing the brightness by 10 percent. The first figure shows a shift by +10% for each color and the second figure -10%.

Similar to the brightness gradients but the following saturation gradients show a change of the RGB color 175, 170, 181 by changing the saturation by 10% instead.

■ 175, 170, 181

255, 255, 255

■ 231, 225, 237

255, 254, 255

■ 175, 170, 181

■ 148, 144, 154

■ 123, 118, 128

■ 98, 93, 103

■ 74, 70, 79

■ 51, 47, 56

■ 30, 27, 35

■ 5, 0, 13

■ 0, 0, 0

■ 175, 170, 181

■ 175, 170, 181

■ 165, 152, 181

■ 185, 188, 181

■ 155, 134, 181

■ 195, 206, 181

■ 145, 116, 181

■ 205, 224, 181

■ 136, 98, 181

■ 214, 242, 181

■ 126, 79, 181

■ 224, 255, 181

■ 116, 61, 181

■ 234, 255, 181

■ 106, 43, 181

■ 244, 255, 181

■ 96, 25, 181

■ 254, 255, 181

■ 86, 7, 181

■ 255, 255, 181

Harmonies

Analogous

The Analogous color harmony consists of three colors that are next to each other on the color wheel.



168, 172, 183



175, 170, 181



181, 169, 176

Triad

The Triadic color harmony groups three colors that are evenly spaced from another and form a triangle on the color wheel.



175, 170, 181



181, 170, 161



159, 175, 173

Complementary

The Complementary color scheme is a pair of colors which are on the opposite of each other on the color wheel.



175, 170, 181



176, 181, 170

Split Complementary

Split-complementary colors differ from the complementary color scheme. The scheme consists of three colors, the original color and two neighbors of the complement color.



162, 175, 167



175, 170, 181



175, 172, 161

Square

The Square scheme is like the rectangle color scheme, but the four colors are evenly spaced on the color wheel.



175, 170, 181



184, 169, 165



169, 174, 163



158, 175, 179

Rectangle

The Rectangle color scheme consists of four colors that form a rectangle on the color wheel.



175, 170, 181



184, 168, 173



169, 174, 163



160, 175, 171

Sweetspot

The Sweet Spot groups the original color and five complimentary colors.



175, 170, 181



232, 230, 235



170, 176, 181



116, 115, 117



245, 245, 245



117, 117, 117

Same Dimension

The Same Dimension uses a secret algorithm to generate beautiful new colors.



175, 170, 181



226, 218, 235



180, 170, 181



85, 82, 89



70, 0, 153



12, 0, 26

Inverse Universe

The Inverse Universe completely reimagines the original color for something new.



181, 170, 176



235, 218, 227



171, 181, 170



89, 82, 86



153, 0, 83



26, 0, 14

Previews

White Background



This preview shows how the RGB color 175, 170, 181 looks on a white background.

Color Contrast Check

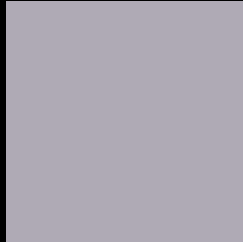
Large Text (above 18pt) WCAG AA × Fail

Any Text WCAG AA × Fail

Large Text (above 18pt) WCAG AAA × Fail

Any Text WCAG AAA × Fail

Black Background



This preview shows how the RGB color 175, 170, 181 looks on a black background.

Color Contrast Check

Large Text (above 18pt) WCAG AA ✓ Pass

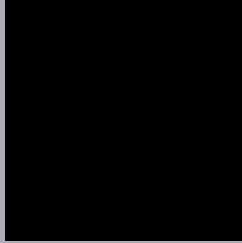
Any Text WCAG AA ✓ Pass

Large Text (above 18pt) WCAG AAA ✓ Pass

Any Text WCAG AAA ✓ Pass

If you want to check with other color combinations, try the [Color Contrast Checker](#).

RGB 175, 170, 181 Background



This preview shows how black text looks on a background with the RGB color 175, 170, 181.

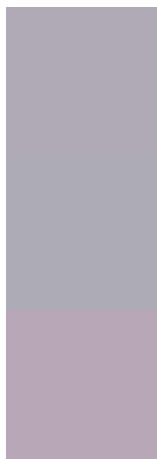


This preview shows how white text looks on a background with the RGB color 175, 170, 181.

Color Blindness Simulation

Color vision deficiency is a very complex topic, and I could not describe the different causes any better than Wikipedia does, so if you want to learn more, you should check out their [article about color blindness](#).

Dichromacy



Original Color


[175](#), [170](#), [181](#)

Protanopia

[172](#), [171](#), [182](#)

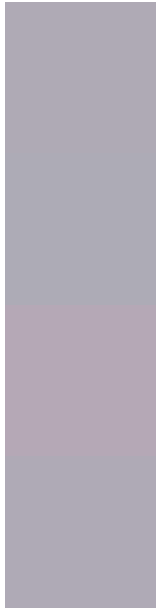
Deuteranopia

[184](#), [167](#), [182](#)



Tritanopia
175, 170, 183

Trichromacy



Original Color

175, 170, 181

Protanomaly

173, 171, 182

Deuteranomaly

181, 168, 182

Tritanomaly

175, 170, 182

Monochromacy



Original Color

175, 170, 181

Achromatopsia

173, 173, 173

Achromatomaly

174, 172, 176

CSS Examples

Text

The CSS property to change the color of the text to RGB 175, 170, 181 is called "color". The color property can be set on classes, ids or directly on the HTML element.

This example shows how text in the color rgb(175, 170, 181) looks like.

```
.text, #text, p{  
    color:rgb(175, 170, 181)  
}
```

If you want to add a text shadow in that color use the text-shadow property, you can generate a text shadow directly with our [CSS Text Shadow Generator](#).

Here you see how black text with a 4 pixel rgb(175, 170, 181) colored shadow looks like.

```
.shadow{ text-shadow: 4px 4px 2px rgb(175, 170, 181) }
```

Border

The CSS property to change the border of an element to RGB 175, 170, 181 is called "border". The border property can be set on classes, ids or directly on the HTML element.

This example shows the color as border, it can be applied via the CSS property "border" or "border-color".

```
.border, #border, table{ border:4px solid rgb(175, 170, 181) }
```

If only the border color should be changed use the property `border-color`.

```
.border{ border-color:rgb(175, 170, 181) }
```

If you want to add a box shadow in that color use:

Here you see how a box with a 4 pixel `rgb(175, 170, 181)` colored shadow looks like.

```
.boxshadow{ -moz-box-shadow:4px 4px 4px  
4px rgb(175, 170, 181); -webkit-box-  
shadow:4px 4px 4px 4px rgb(175, 170, 181);  
box-shadow:4px 4px 4px 4px rgb(175, 170,  
181) }
```

Background

The CSS property to change the background color of an element to RGB 175, 170, 181 is called "background". The background property can be set on classes, ids or directly on the HTML element.

```
.background, #background, body{  
background: rgb(175, 170, 181) }
```

If only the background color should be changed can be used:

```
.background{ background-color: rgb(175,  
170, 181) }
```

This example shows the color as background, it is applied via the CSS property "background".

To optimize and compress your CSS code, you can use our [online CSS compressor and optimizer](#) based on csstidy. If you want to create a linear or radial gradient as background or border, check our [CSS Gradient Generator](#).

Hey! You found this booklet interesting? Support Converting Colors with the new Membership Option!

The pro membership hides all ads, plus gives you double the colors in the color bucket, and more awesome pro features!

[Learn more, Memberships starting at \\$2.50/m!](#)

**Follow me
on Twitter!**

@ConvertingColor