

Converting Colors

RGB(176, 107, 111)

Have a look what the booklet for
RGB(176, 107, 111) contains.

RGB(176, 107, 111)	3
<i>Conversions</i>	4
<i>Details</i>	6
<i>Harmonies</i>	11
<i>Previews</i>	23
<i>Color Blindness Simulation</i>	26
<i>CSS Examples</i>	29

Color

RGB(176, 107, 111)

Conversions

Conversions Part 1

Format	Color
Hex	B06B6F
RGB	176, 107, 111
RGB Percent	69%, 42%, 44%
CMY	0.3098, 0.5804, 0.5647
CMYK	0.00, 0.39, 0.37, 0.31
HSL	357°, 30%, 55%
HSV	357°, 39%, 69%
XYZ	26.0314, 20.8932, 17.6997
YIQ	128.0870, 39.8400, 15.8720

Conversions

Conversions Part 2

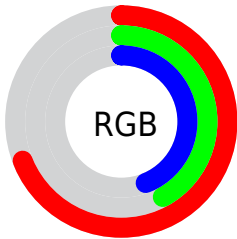
Format	Color
R_{YB}	176, 107, 111
Decimal	11561839
CIE _{Lab}	52.83, 28.01, 9.52
CIE _{LCh}	53, 29.589, 18.777
Yxy	20.8932, 0.4028, 0.3233
Android (android.graphics.Color)	4289751919 (0xFFB06B6F)
YUV	128.0870, -8.4239, 42.0197
Hunter-Lab	45.7091, 21.6653, 9.0378

Details

The RGB color **176, 107, 111** is a dark color, and the websafe version is hex **996666**. A complement of this color would be **107, 176, 172**, and the grayscale version is **128, 128, 128**.

A 20% lighter version of the original color is **233, 159, 163**, and **121, 58, 63** is the 20% darker color. If you saturate the color by 10%, you get **176, 89, 94**, and if you desaturate by 10%, it is **176, 125, 128**.

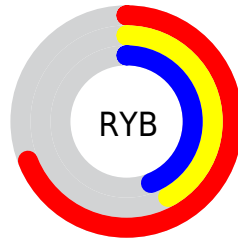
Distribution



Red (69%)

Green (42%)

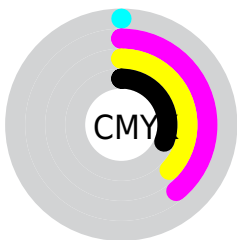
Blue (44%)



Red (69%)

Yellow (42%)

Blue (44%)

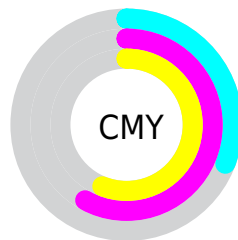


Cyan (0%)

Magenta (39%)

Yellow (37%)

Black (31%)



Cyan (31%)

Magenta (58%)

Yellow (56%)

Brightness & Saturation Gradients

These gradients show how the RGB color 176, 107, 111 changes by changing the brightness by 10 percent. The first figure shows a shift by +10% for each color and the second figure -10%.

Similar to the brightness gradients but the following saturation gradients show a change of the RGB color 176, 107, 111 by changing the saturation by 10% instead.

 176, 107, 111

255, 255, 255

 233, 159, 163


 255, 187, 190

 255, 214, 217

 255, 243, 246

 176, 107, 111

 148, 82, 87

 121, 58, 63

 95, 35, 42

 69, 10, 21

 46, 0, 0

 0, 0, 0


 176, 107, 111

 176, 89, 94

 176, 72, 78

 176, 107, 111


 176, 125, 128

 176, 142, 144

 176, 54, 61

 176, 160, 161

 176, 37, 45

 176, 177, 177

 176, 19, 28

 176, 195, 194

 176, 1, 12

 176, 213, 210

 176, 0, 10

 176, 230, 227

 176, 248, 244

 176, 255, 255

Harmonies

Analogous

The Analogous color harmony consists of three colors that are next to each other on the color wheel.



170, 107, 137



176, 107, 111



169, 113, 89

Triad

The Triadic color harmony groups three colors that are evenly spaced from another and form a triangle on the color wheel.



176, 107, 111



98, 136, 92



73, 131, 175

Complementary

The Complementary color scheme is a pair of colors which are on the opposite of each other on the color wheel.



176, 107, 111



107, 176, 172

Split Complementary

Split-complementary colors differ from the complementary color scheme. The scheme consists of three colors, the original color and two neighbors of the complement color.



31, 137, 164



176, 107, 111



66, 139, 115

Square

The Square scheme is like the rectangle color scheme, but the four colors are evenly spaced on the color wheel.



176, 107, 111



127, 130, 77



31, 140, 142



115, 123, 174

Rectangle

The Rectangle color scheme consists of four colors that form a rectangle on the color wheel.



176, 107, 111



158, 118, 79



31, 140, 142



58, 134, 173

Sweetspot

The Sweet Spot groups the original color and five complimentary colors.



176, 107, 111



230, 202, 204



171, 107, 176



115, 99, 100



242, 242, 242



115, 115, 115

Same Dimension

The Same Dimension uses a secret algorithm to generate beautiful new colors.



176, 107, 111



230, 122, 128



176, 137, 107



89, 80, 81



153, 0, 9



26, 0, 1

Inverse Universe

The Inverse Universe completely reimagines the original color for something new.



176, 107, 111



230, 122, 128



107, 146, 176



89, 80, 81



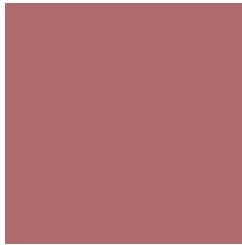
153, 0, 9



26, 0, 1

Previews

White Background



This preview shows how the RGB color 176, 107, 111 looks on a white background.

Color Contrast Check

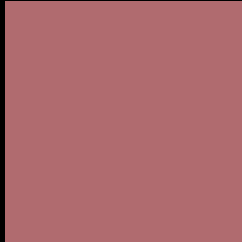
Large Text (above 18pt) WCAG AA ✓ Pass

Any Text WCAG AA ✗ Fail

Large Text (above 18pt) WCAG AAA ✗ Fail

Any Text WCAG AAA ✗ Fail

Black Background



This preview shows how the RGB color 176, 107, 111 looks on a black background.

Color Contrast Check

Large Text (above 18pt) WCAG AA ✓ Pass

Any Text WCAG AA ✓ Pass

Large Text (above 18pt) WCAG AAA ✓ Pass

Any Text WCAG AAA × Fail

If you want to check with other color combinations, try the [Color Contrast Checker](#).

RGB 176, 107, 111 Background



This preview shows how black text looks on a background with the RGB color 176, 107, 111.



This preview shows how white text looks on a background with the RGB color 176, 107, 111.

Color Blindness Simulation

Color vision deficiency is a very complex topic, and I could not describe the different causes any better than Wikipedia does, so if you want to learn more, you should check out their [article about color blindness](#).

Dichromacy



Original Color


176, 107, 111

Protanopia

130, 126, 121

Deuteranopia

145, 122, 108



Tritanopia
176, 106, 114

Trichromacy



Original Color

176, 107, 111

Protanomaly

147, 119, 117

Deuteranomaly

156, 117, 109

Tritanomaly

176, 106, 113

Monochromacy



Original Color

176, 107, 111

Achromatopsia

128, 128, 128

Achromatomaly

145, 120, 122

CSS Examples

Text

The CSS property to change the color of the text to RGB 176, 107, 111 is called "color". The color property can be set on classes, ids or directly on the HTML element.

This example shows how text in the color `rgb(176, 107, 111)` looks like.

```
.text, #text, p{  
    color:rgb(176, 107, 111)  
}
```

If you want to add a text shadow in that color use the text-shadow property, you can generate a text shadow directly with our [CSS Text Shadow Generator](#).

Here you see how black text with a 4 pixel rgb(176, 107, 111) colored shadow looks like.

```
.shadow{ text-shadow: 4px 4px 2px rgb(176, 107, 111) }
```

Border

The CSS property to change the border of an element to RGB 176, 107, 111 is called "border". The border property can be set on classes, ids or directly on the HTML element.

This example shows the color as border, it can be applied via the CSS property "border" or "border-color".

```
.border, #border, table{ border:4px solid rgb(176, 107, 111) }
```

If only the border color should be changed use the property `border-color`.

```
.border{ border-color:rgb(176, 107, 111) }
```

If you want to add a box shadow in that color use:

Here you see how a box with a 4 pixel `rgb(176, 107, 111)` colored shadow looks like.

```
.boxshadow{ -moz-box-shadow:4px 4px 4px  
4px rgb(176, 107, 111); -webkit-box-  
shadow:4px 4px 4px 4px rgb(176, 107, 111);  
box-shadow:4px 4px 4px 4px rgb(176, 107,  
111) }
```

Background

The CSS property to change the background color of an element to RGB 176, 107, 111 is called "background". The background property can be set on classes, ids or directly on the HTML element.

```
.background, #background, body{  
background: rgb(176, 107, 111) }
```

If only the background color should be changed can be used:

```
.background{ background-color: rgb(176,  
107, 111) }
```

This example shows the color as background, it is applied via the CSS property "background".

To optimize and compress your CSS code, you can use our [online CSS compressor and optimizer](#) based on csstidy. If you want to create a linear or radial gradient as background or border, check our [CSS Gradient Generator](#).

Hey! You found this booklet interesting? Support Converting Colors with the new Membership Option!

The pro membership hides all ads, plus gives you double the colors in the color bucket, and more awesome pro features!

[Learn more, Memberships starting at \\$2.50/m!](#)

**Follow me
on Twitter!**

@ConvertingColor