

Converting Colors

RGB(176, 129, 133)

Have a look what the booklet for
RGB(176, 129, 133) contains.

RGB(176, 129, 133)	3
<i>Conversions</i>	4
<i>Details</i>	6
<i>Harmonies</i>	11
<i>Previews</i>	23
<i>Color Blindness Simulation</i>	26
<i>CSS Examples</i>	29

Color

RGB(176, 129, 133)

Conversions

Conversions Part 1

Format	Color
Hex	B08185
RGB	176, 129, 133
RGB Percent	69%, 51%, 52%
CMY	0.3098, 0.4941, 0.4784
CMYK	0.00, 0.27, 0.24, 0.31
HSL	355°, 23%, 60%
HSV	355°, 27%, 69%
XYZ	29.9884, 26.6241, 25.7487
YIQ	143.5090, 26.7280, 11.2080

Conversions

Conversions Part 2

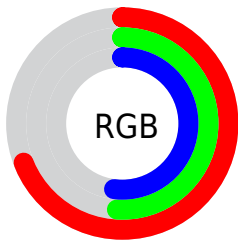
Format	Color
RYB	176, 129, 133
Decimal	11567493
CIELab	58.62, 18.73, 4.98
CIElCh	59, 19.382, 14.903
Yxy	26.6241, 0.3641, 0.3233
Android (android.graphics.Color)	4289757573 (0xFFB08185)
YUV	143.5090, -5.1809, 28.4946
Hunter-Lab	51.5985, 13.4445, 6.5321

Details

The RGB color **176, 129, 133** is a light color, and the websafe version is hex **CC9999**. A complement of this color would be **129, 176, 172**, and the grayscale version is **144, 144, 144**.

A 20% lighter version of the original color is **232, 182, 186**, and **122, 79, 84** is the 20% darker color. If you saturate the color by 10%, you get **176, 111, 117**, and if you desaturate by 10%, it is **176, 147, 149**.

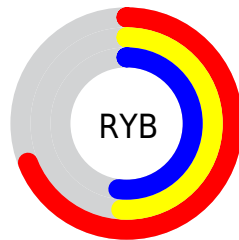
Distribution



Red (69%)

Green (51%)

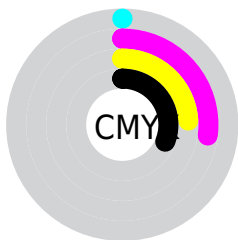
Blue (52%)



Red (69%)

Yellow (51%)

Blue (52%)

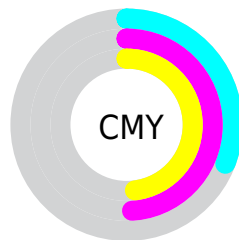


Cyan (0%)

Magenta (27%)

Yellow (24%)

Black (31%)



Cyan (31%)

Magenta (49%)

Yellow (48%)

Brightness & Saturation Gradients

These gradients show how the RGB color 176, 129, 133 changes by changing the brightness by 10 percent. The first figure shows a shift by +10% for each color and the second figure -10%.

Similar to the brightness gradients but the following saturation gradients show a change of the RGB color 176, 129, 133 by changing the saturation by 10% instead.

 176, 129, 133

255, 255, 255

 232, 182, 186

 255, 210, 214

 255, 238, 242


 176, 129, 133

 149, 104, 108

 122, 79, 84

 97, 56, 61

 72, 34, 39

 48, 13, 18

 26, 0, 1

 0, 0, 0

 176, 129, 133

 176, 111, 117

 176, 129, 133

 176, 147, 149

 176, 94, 101

 176, 164, 165

 176, 76, 85

 176, 182, 181

 176, 59, 69

 176, 199, 197

 176, 41, 52

 176, 217, 214

 176, 23, 36

 176, 235, 230

 176, 6, 20

 176, 252, 246

 176, 0, 15

 176, 255, 255

Harmonies

Analogous

The Analogous color harmony consists of three colors that are next to each other on the color wheel.



170, 130, 150



176, 129, 133



173, 132, 118

Triad

The Triadic color harmony groups three colors that are evenly spaced from another and form a triangle on the color wheel.



176, 129, 133



126, 147, 117



110, 145, 173

Complementary

The Complementary color scheme is a pair of colors which are on the opposite of each other on the color wheel.



176, 129, 133



129, 176, 172

Split Complementary

Split-complementary colors differ from the complementary color scheme. The scheme consists of three colors, the original color and two neighbors of the complement color.



95, 149, 164



176, 129, 133



107, 150, 132

Square

The Square scheme is like the rectangle color scheme, but the four colors are evenly spaced on the color wheel.



176, 129, 133



145, 143, 108



95, 151, 149



132, 140, 174

Rectangle

The Rectangle color scheme consists of four colors that form a rectangle on the color wheel.



176, 129, 133



166, 135, 111



95, 151, 149



104, 147, 171

Sweetspot

The Sweet Spot groups the original color and five complimentary colors.



176, 129, 133



230, 211, 213



171, 129, 176



115, 103, 104



242, 242, 242



115, 115, 115

Same Dimension

The Same Dimension uses a secret algorithm to generate beautiful new colors.



176, 129, 133



230, 156, 162



176, 148, 129



89, 80, 81



153, 0, 13



26, 0, 2

Inverse Universe

The Inverse Universe completely reimagines the original color for something new.



176, 129, 133



230, 156, 162



129, 157, 176



89, 80, 81



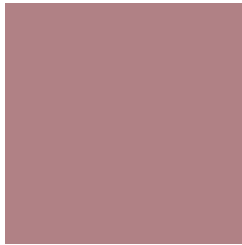
153, 0, 13



26, 0, 2

Previews

White Background



This preview shows how the RGB color 176, 129, 133 looks on a white background.

Color Contrast Check

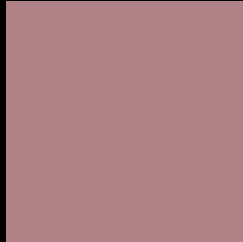
Large Text (above 18pt) WCAG AA ✓ Pass

Any Text WCAG AA ✗ Fail

Large Text (above 18pt) WCAG AAA ✗ Fail

Any Text WCAG AAA ✗ Fail

Black Background



This preview shows how the RGB color 176, 129, 133 looks on a black background.

Color Contrast Check

Large Text (above 18pt) WCAG AA ✓ Pass

Any Text WCAG AA ✓ Pass

Large Text (above 18pt) WCAG AAA ✓ Pass

Any Text WCAG AAA × Fail

If you want to check with other color combinations, try the [Color Contrast Checker](#).

RGB 176, 129, 133 Background



This preview shows how black text looks on a background with the RGB color 176, 129, 133.



This preview shows how white text looks on a background with the RGB color 176, 129, 133.

Color Blindness Simulation

Color vision deficiency is a very complex topic, and I could not describe the different causes any better than Wikipedia does, so if you want to learn more, you should check out their [article about color blindness](#).

Dichromacy



Original Color
176, 129, 133

Protanopia
144, 141, 139

Deuteranopia
159, 136, 132



Tritanopia
177, 128, 138

Trichromacy



Original Color

176, 129, 133

Protanomaly

156, 137, 137

Deuteranomaly

165, 133, 132

Tritanomaly

177, 128, 136

Monochromacy



Original Color

176, 129, 133

Achromatopsia

144, 144, 144

Achromatomaly

156, 139, 140

CSS Examples

Text

The CSS property to change the color of the text to RGB 176, 129, 133 is called "color". The color property can be set on classes, ids or directly on the HTML element.

This example shows how text in the color rgb(176, 129, 133) looks like.

```
.text, #text, p{  
    color:rgb(176, 129, 133)  
}
```

If you want to add a text shadow in that color use the text-shadow property, you can generate a text shadow directly with our [CSS Text Shadow Generator](#).

Here you see how black text with a 4 pixel rgb(176, 129, 133) colored shadow looks like.

```
.shadow{ text-shadow: 4px 4px 2px rgb(176, 129, 133) }
```

Border

The CSS property to change the border of an element to RGB 176, 129, 133 is called "border". The border property can be set on classes, ids or directly on the HTML element.

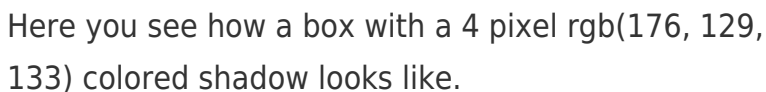
This example shows the color as border, it can be applied via the CSS property "border" or "border-color".

```
.border, #border, table{ border:4px solid rgb(176, 129, 133) }
```

If only the border color should be changed use the property `border-color`.

```
.border{ border-color:rgb(176, 129, 133) }
```

If you want to add a box shadow in that color use:



Here you see how a box with a 4 pixel `rgb(176, 129, 133)` colored shadow looks like.

```
.boxshadow{ -moz-box-shadow:4px 4px 4px 4px rgb(176, 129, 133); -webkit-box-shadow:4px 4px 4px 4px rgb(176, 129, 133); box-shadow:4px 4px 4px 4px rgb(176, 129, 133) }
```

Background

The CSS property to change the background color of an element to RGB 176, 129, 133 is called "background". The background property can be set on classes, ids or directly on the HTML element.

```
.background, #background, body{  
background: rgb(176, 129, 133) }
```

If only the background color should be changed can be used:

```
.background{ background-color: rgb(176,  
129, 133) }
```

This example shows the color as background, it is applied via the CSS property "background".

To optimize and compress your CSS code, you can use our [online CSS compressor and optimizer](#) based on csstidy. If you want to create a linear or radial gradient as background or border, check our [CSS Gradient Generator](#).

Hey! You found this booklet interesting? Support Converting Colors with the new Membership Option!

The pro membership hides all ads, plus gives you double the colors in the color bucket, and more awesome pro features!

[Learn more, Memberships starting at \\$2.50/m!](#)

**Follow me
on Twitter!**

@ConvertingColor