

Converting Colors

RGB(177, 124, 91)

Have a look what the booklet for
RGB(177, 124, 91) contains.

RGB(177, 124, 91)	3
<i>Conversions</i>	4
<i>Details</i>	6
<i>Harmonies</i>	11
<i>Previews</i>	23
<i>Color Blindness Simulation</i>	26
<i>CSS Examples</i>	29

Color

RGB(177, 124, 91)

Conversions

Conversions Part 1

Format	Color
Hex	B17C5B
RGB	177, 124, 91
RGB Percent	69%, 49%, 36%
CMY	0.3059, 0.5137, 0.6431
CMYK	0.00, 0.30, 0.49, 0.31
HSL	23°, 36%, 53%
HSV	23°, 49%, 69%
XYZ	27.2274, 24.5177, 13.1949
YIQ	136.0850, 42.1810, 0.9730

Conversions

Conversions Part 2

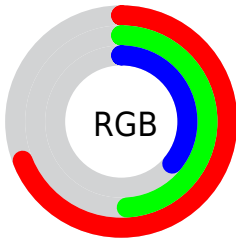
Format	Color
R_{YB}	177, 145, 91
Decimal	11631707
CIE Lab	56.60, 16.66, 26.20
CIE LCh	57, 31.054, 57.550
Yxy	24.5177, 0.4193, 0.3775
Android (android.graphics.Color)	4289821787 (0xFFB17C5B)
YUV	136.0850, -22.2269, 35.8825
Hunter-Lab	49.5154, 11.5013, 18.8612

Details

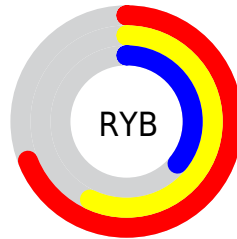
The RGB color **177, 124, 91** is a dark color, and the websafe version is hex **CC9966**. A complement of this color would be **91, 144, 177**, and the grayscale version is **136, 136, 136**.

A 20% lighter version of the original color is **235, 177, 142**, and **122, 75, 44** is the 20% darker color. If you saturate the color by 10%, you get **177, 113, 73**, and if you desaturate by 10%, it is **177, 135, 109**.

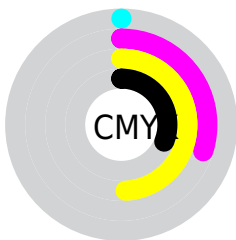
Distribution



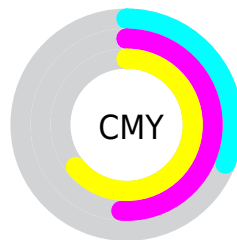
- Red (69%)
- Green (49%)
- Blue (36%)



- Red (69%)
- Yellow (57%)
- Blue (36%)



- Cyan (0%)
- Magenta (30%)
- Yellow (49%)
- Black (31%)



- Cyan (31%)
- Magenta (51%)
- Yellow (64%)

Brightness & Saturation Gradients

These gradients show how the RGB color 177, 124, 91 changes by changing the brightness by 10 percent. The first figure shows a shift by +10% for each color and the second figure -10%.

Similar to the brightness gradients but the following saturation gradients show a change of the RGB color 177, 124, 91 by changing the saturation by 10% instead.


 177, 124, 91  177, 124, 91

255, 255, 255  149, 99, 67

 235, 177, 142  122, 75, 44

 255, 204, 168  95, 52, 23

 255, 232, 195  70, 30, 0

 255, 255, 223  44, 9, 0

 255, 255, 252  5, 0, 0

 0, 0, 0

 177, 124, 91  177, 124, 91

 177, 113, 73  177, 135, 109

■ 177, 102, 56

■ 177, 146, 126

■ 177, 91, 38

■ 177, 157, 144

■ 177, 80, 20

■ 177, 168, 162

■ 177, 69, 3

■ 177, 179, 180

■ 177, 68, 0

■ 177, 189, 197

■ 177, 200, 215

■ 177, 211, 233

■ 177, 222, 250

Harmonies

Analogous

The Analogous color harmony consists of three colors that are next to each other on the color wheel.



188, 117, 112



177, 124, 91



156, 133, 81

Triad

The Triadic color harmony groups three colors that are evenly spaced from another and form a triangle on the color wheel.



177, 124, 91



61, 150, 133



136, 130, 184

Complementary

The Complementary color scheme is a pair of colors which are on the opposite of each other on the color wheel.



177, 124, 91



91, 144, 177

Split Complementary

Split-complementary colors differ from the complementary color scheme. The scheme consists of three colors, the original color and two neighbors of the complement color.



93, 139, 189



177, 124, 91



28, 150, 160

Square

The Square scheme is like the rectangle color scheme, but the four colors are evenly spaced on the color wheel.



177, 124, 91



96, 147, 106



47, 146, 181



168, 120, 165

Rectangle

The Rectangle color scheme consists of four colors that form a rectangle on the color wheel.



177, 124, 91



138, 139, 83



47, 146, 181



123, 133, 187

Sweetspot

The Sweet Spot groups the original color and five complimentary colors.



177, 124, 91



230, 208, 195



177, 91, 144



115, 102, 94



242, 242, 242



115, 115, 115

Same Dimension

The Same Dimension uses a secret algorithm to generate beautiful new colors.



177, 124, 91



230, 147, 96



177, 167, 91



89, 84, 80



153, 59, 0



26, 10, 0

Inverse Universe

The Inverse Universe completely reimagines the original color for something new.



91, 144, 177



96, 178, 230



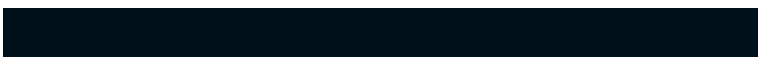
91, 101, 177



80, 86, 89



0, 94, 153



0, 16, 26

Previews

White Background



This preview shows how the RGB color 177, 124, 91 looks on a white background.

Color Contrast Check

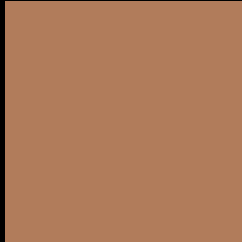
Large Text (above 18pt) WCAG AA ✓ Pass

Any Text WCAG AA × Fail

Large Text (above 18pt) WCAG AAA × Fail

Any Text WCAG AAA × Fail

Black Background



This preview shows how the RGB color 177, 124, 91 looks on a black background.

Color Contrast Check

Large Text (above 18pt) WCAG AA ✓ Pass

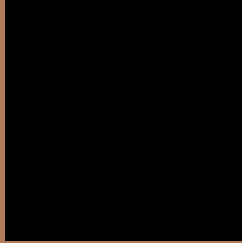
Any Text WCAG AA ✓ Pass

Large Text (above 18pt) WCAG AAA ✓ Pass

Any Text WCAG AAA × Fail

If you want to check with other color combinations, try the [Color Contrast Checker](#).

RGB 177, 124, 91 Background



This preview shows how black text looks on a background with the RGB color 177, 124, 91.



This preview shows how white text looks on a background with the RGB color 177, 124, 91.

Color Blindness Simulation

Color vision deficiency is a very complex topic, and I could not describe the different causes any better than Wikipedia does, so if you want to learn more, you should check out their [article about color blindness](#).

Dichromacy



Original Color


177, 124, 91

Protanopia

147, 136, 96

Deuteranopia

163, 130, 90



Tritanopia
180, 119, 128

Trichromacy



Original Color

177, 124, 91

Protanomaly

158, 132, 94

Deuteranomaly

168, 128, 90

Tritanomaly

179, 121, 115

Monochromacy



Original Color

177, 124, 91

Achromatopsia

136, 136, 136

Achromatomaly

151, 132, 120

CSS Examples

Text

The CSS property to change the color of the text to RGB 177, 124, 91 is called "color". The color property can be set on classes, ids or directly on the HTML element.

This example shows how text in the color `rgb(177, 124, 91)` looks like.

```
.text, #text, p{  
    color:rgb(177, 124, 91)  
}
```

If you want to add a text shadow in that color use the text-shadow property, you can generate a text shadow directly with our [CSS Text Shadow Generator](#).

Here you see how black text with a 4 pixel rgb(177, 124, 91) colored shadow looks like.

```
.shadow{ text-shadow: 4px 4px 2px rgb(177, 124, 91) }
```

Border

The CSS property to change the border of an element to RGB 177, 124, 91 is called "border". The border property can be set on classes, ids or directly on the HTML element.

This example shows the color as border, it can be applied via the CSS property "border" or "border-color".

```
.border, #border, table{ border:4px solid rgb(177, 124, 91) }
```

If only the border color should be changed use the property border-color.

```
.border{ border-color:rgb(177, 124, 91) }
```

If you want to add a box shadow in that color use:

Here you see how a box with a 4 pixel rgb(177, 124, 91) colored shadow looks like.

```
.boxshadow{ -moz-box-shadow:4px 4px 4px  
4px rgb(177, 124, 91); -webkit-box-  
shadow:4px 4px 4px 4px rgb(177, 124, 91);  
box-shadow:4px 4px 4px 4px rgb(177, 124,  
91) }
```

Background

The CSS property to change the background color of an element to RGB 177, 124, 91 is called "background". The background property can be set on classes, ids or directly on the HTML element.

```
.background, #background, body{  
background: rgb(177, 124, 91) }
```

If only the background color should be changed can be used:

```
.background{ background-color: rgb(177,  
124, 91) }
```

This example shows the color as background, it is applied via the CSS property "background".

To optimize and compress your CSS code, you can use our [online CSS compressor and optimizer](#) based on csstidy. If you want to create a linear or radial gradient as background or border, check our [CSS Gradient Generator](#).

Hey! You found this booklet interesting? Support Converting Colors with the new Membership Option!

The pro membership hides all ads, plus gives you double the colors in the color bucket, and more awesome pro features!

[Learn more, Memberships starting at \\$2.50/m!](#)

**Follow me
on Twitter!**

@ConvertingColor