

Converting Colors

RGB(177, 125, 129)

Have a look what the booklet for
RGB(177, 125, 129) contains.

RGB(177, 125, 129)	3
<i>Conversions</i>	4
<i>Details</i>	6
<i>Harmonies</i>	11
<i>Previews</i>	23
<i>Color Blindness Simulation</i>	26
<i>CSS Examples</i>	29

Color

RGB(177, 125, 129)

Conversions

Conversions Part 1

Format	Color
Hex	B17D81
RGB	177, 125, 129
RGB Percent	69%, 49%, 51%
CMY	0.3059, 0.5098, 0.4941
CMYK	0.00, 0.29, 0.27, 0.31
HSL	355°, 25%, 59%
HSV	355°, 29%, 69%
XYZ	29.4275, 25.5993, 24.1590
YIQ	141.0040, 29.7080, 12.2680

Conversions

Conversions Part 2

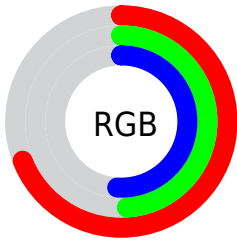
Format	Color
R_{YB}	177, 125, 129
Decimal	11632001
CIE _{Lab}	57.65, 20.78, 5.91
CIE _{LCh}	58, 21.600, 15.884
Yxy	25.5993, 0.3716, 0.3233
Android (android.graphics.Color)	4289822081 (0xFFB17D81)
YUV	141.0040, -5.9180, 31.5685
Hunter-Lab	50.5958, 15.2766, 7.1066

Details

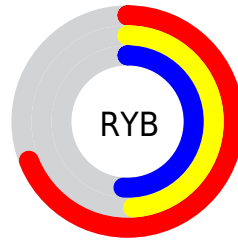
The RGB color **177, 125, 129** is a dark color, and the websafe version is hex **996666**. A complement of this color would be **125, 177, 173**, and the grayscale version is **141, 141, 141**.

A 20% lighter version of the original color is **234, 178, 182**, and **123, 76, 80** is the 20% darker color. If you saturate the color by 10%, you get **177, 107, 113**, and if you desaturate by 10%, it is **177, 143, 145**.

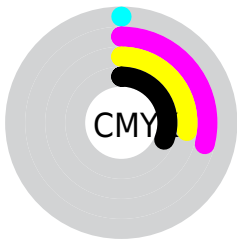
Distribution



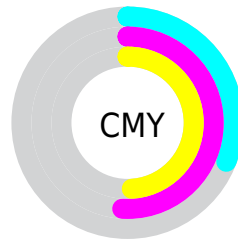
- Red (69%)
- Green (49%)
- Blue (51%)



- Red (69%)
- Yellow (49%)
- Blue (51%)



- Cyan (0%)
- Magenta (29%)
- Yellow (27%)
- Black (31%)



- Cyan (31%)
- Magenta (51%)
- Yellow (49%)


Brightness & Saturation Gradients

These gradients show how the RGB color 177, 125, 129 changes by changing the brightness by 10 percent. The first figure shows a shift by +10% for each color and the second figure -10%.

Similar to the brightness gradients but the following saturation gradients show a change of the RGB color 177, 125, 129 by changing the saturation by 10% instead.


 177, 125, 129

255, 255, 255

 234, 178, 182

 255, 206, 209

 255, 234, 238

 177, 125, 129

 150, 100, 104

 123, 76, 80

 97, 52, 57


 72, 30, 36

 48, 8, 14


 23, 0, 0

 0, 0, 0

 177, 125, 129

 177, 107, 113

 177, 125, 129

 177, 143, 145

 177, 90, 96

 177, 160, 162

 177, 72, 80

 177, 178, 178

 177, 54, 64

 177, 196, 194

 177, 37, 47

 177, 214, 211

 177, 19, 31

 177, 231, 227

 177, 1, 15

 177, 249, 243

 177, 0, 14

 177, 255, 255

Harmonies

Analogous

The Analogous color harmony consists of three colors that are next to each other on the color wheel.



170, 126, 148



177, 125, 129



173, 128, 112

Triad

The Triadic color harmony groups three colors that are evenly spaced from another and form a triangle on the color wheel.



177, 125, 129



121, 145, 112



103, 143, 175

Complementary

The Complementary color scheme is a pair of colors which are on the opposite of each other on the color wheel.



177, 125, 129



125, 177, 173

Split Complementary

Split-complementary colors differ from the complementary color scheme. The scheme consists of three colors, the original color and two neighbors of the complement color.



85, 147, 165



177, 125, 129



100, 148, 129

Square

The Square scheme is like the rectangle color scheme, but the four colors are evenly spaced on the color wheel.



177, 125, 129



142, 140, 102



85, 149, 148



129, 137, 175

Rectangle

The Rectangle color scheme consists of four colors that form a rectangle on the color wheel.



177, 125, 129



166, 132, 105



85, 149, 148



96, 145, 172

Sweetspot

The Sweet Spot groups the original color and five complimentary colors.



177, 125, 129



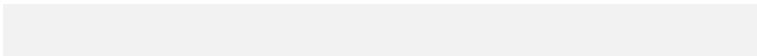
230, 209, 210



173, 125, 177



115, 102, 103



242, 242, 242



115, 115, 115

Same Dimension

The Same Dimension uses a secret algorithm to generate beautiful new colors.



177, 125, 129



230, 149, 155



177, 147, 125



89, 80, 81



153, 0, 12



26, 0, 2

Inverse Universe

The Inverse Universe completely reimagines the original color for something new.



177, 125, 129



230, 149, 155



125, 155, 177



89, 80, 81



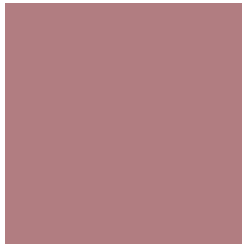
153, 0, 12



26, 0, 2

Previews

White Background



This preview shows how the RGB color 177, 125, 129 looks on a white background.

Color Contrast Check

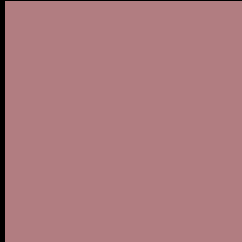
Large Text (above 18pt) WCAG AA ✓ Pass

Any Text WCAG AA ✗ Fail

Large Text (above 18pt) WCAG AAA ✗ Fail

Any Text WCAG AAA ✗ Fail

Black Background



This preview shows how the RGB color 177, 125, 129 looks on a black background.

Color Contrast Check

Large Text (above 18pt) WCAG AA ✓ Pass

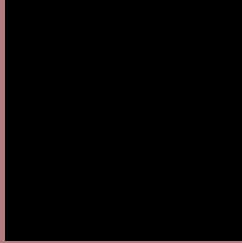
Any Text WCAG AA ✓ Pass

Large Text (above 18pt) WCAG AAA ✓ Pass

Any Text WCAG AAA × Fail

If you want to check with other color combinations, try the [Color Contrast Checker](#).

RGB 177, 125, 129 Background



This preview shows how black text looks on a background with the RGB color 177, 125, 129.



This preview shows how white text looks on a background with the RGB color 177, 125, 129.

Color Blindness Simulation

Color vision deficiency is a very complex topic, and I could not describe the different causes any better than Wikipedia does, so if you want to learn more, you should check out their [article about color blindness](#).

Dichromacy



Original Color
177, 125, 129

Protanopia
142, 138, 136

Deuteranopia
156, 134, 127



Tritanopia
178, 124, 134

Trichromacy



Original Color

177, 125, 129

Protanomaly

155, 133, 133

Deuteranomaly

164, 131, 128

Tritanomaly

178, 124, 132

Monochromacy



Original Color

177, 125, 129

Achromatopsia

141, 141, 141

Achromatomaly

154, 135, 137

CSS Examples

Text

The CSS property to change the color of the text to RGB 177, 125, 129 is called "color". The color property can be set on classes, ids or directly on the HTML element.

This example shows how text in the color `rgb(177, 125, 129)` looks like.

```
.text, #text, p{  
    color:rgb(177, 125, 129)  
}
```

If you want to add a text shadow in that color use the text-shadow property, you can generate a text shadow directly with our [CSS Text Shadow Generator](#).

Here you see how black text with a 4 pixel rgb(177, 125, 129) colored shadow looks like.

```
.shadow{ text-shadow: 4px 4px 2px rgb(177, 125, 129) }
```

Border

The CSS property to change the border of an element to RGB 177, 125, 129 is called "border". The border property can be set on classes, ids or directly on the HTML element.

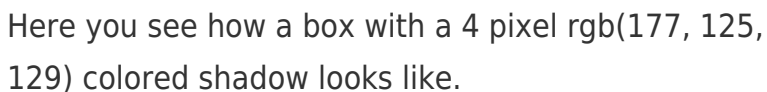
This example shows the color as border, it can be applied via the CSS property "border" or "border-color".

```
.border, #border, table{ border:4px solid rgb(177, 125, 129) }
```

If only the border color should be changed use the property `border-color`.

```
.border{ border-color:rgb(177, 125, 129) }
```

If you want to add a box shadow in that color use:



Here you see how a box with a 4 pixel `rgb(177, 125, 129)` colored shadow looks like.

```
.boxshadow{ -moz-box-shadow:4px 4px 4px  
4px rgb(177, 125, 129); -webkit-box-  
shadow:4px 4px 4px 4px rgb(177, 125, 129);  
box-shadow:4px 4px 4px 4px rgb(177, 125,  
129) }
```

Background

The CSS property to change the background color of an element to RGB 177, 125, 129 is called "background". The background property can be set on classes, ids or directly on the HTML element.

```
.background, #background, body{  
background: rgb(177, 125, 129) }
```

If only the background color should be changed can be used:

```
.background{ background-color: rgb(177,  
125, 129) }
```

This example shows the color as background, it is applied via the CSS property "background".

To optimize and compress your CSS code, you can use our [online CSS compressor and optimizer](#) based on csstidy. If you want to create a linear or radial gradient as background or border, check our [CSS Gradient Generator](#).

Hey! You found this booklet interesting? Support Converting Colors with the new Membership Option!

The pro membership hides all ads, plus gives you double the colors in the color bucket, and more awesome pro features!

[Learn more, Memberships starting at \\$2.50/m!](#)

**Follow me
on Twitter!**

@ConvertingColor