

Converting Colors

RGB(178, 131, 124)

Have a look what the booklet for
RGB(178, 131, 124) contains.

RGB(178, 131, 124)	3
<i>Conversions</i>	4
<i>Details</i>	6
<i>Harmonies</i>	11
<i>Previews</i>	23
<i>Color Blindness Simulation</i>	26
<i>CSS Examples</i>	29

Color

RGB(178, 131, 124)

Conversions

Conversions Part 1

Format	Color
Hex	B2837C
RGB	178, 131, 124
RGB Percent	70%, 51%, 49%
CMY	0.3020, 0.4863, 0.5137
CMYK	0.00, 0.26, 0.30, 0.30
HSL	8°, 26%, 59%
HSV	8°, 30%, 70%
XYZ	30.1145, 27.1528, 22.7226
YIQ	144.2550, 30.2590, 7.7870

Conversions

Conversions Part 2

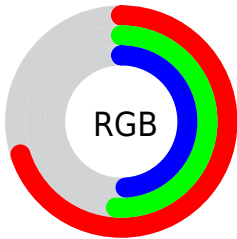
Format	Color
R_{YB}	178, 132, 124
Decimal	11699068
CIE _{Lab}	59.12, 17.09, 10.88
CIE _{LCh}	59, 20.260, 32.478
Yxy	27.1528, 0.3765, 0.3395
Android (android.graphics.Color)	4289889148 (0xFFB2837C)
YUV	144.2550, -9.9857, 29.5944
Hunter-Lab	52.1084, 11.9692, 10.6216

Details

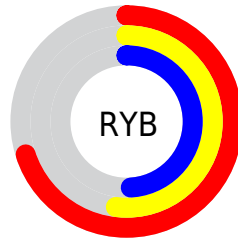
The RGB color **178, 131, 124** is a dark color, and the websafe version is hex **CC9999**. A complement of this color would be **124, 171, 178**, and the grayscale version is **144, 144, 144**.

A 20% lighter version of the original color is **235, 184, 177**, and **124, 81, 75** is the 20% darker color. If you saturate the color by 10%, you get **178, 116, 106**, and if you desaturate by 10%, it is **178, 146, 142**.

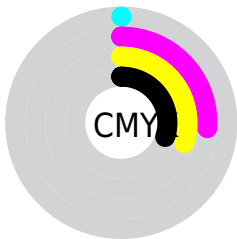
Distribution



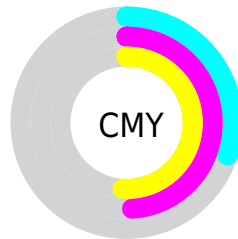
- Red (70%)
- Green (51%)
- Blue (49%)



- Red (70%)
- Yellow (52%)
- Blue (49%)



- Cyan (0%)
- Magenta (26%)
- Yellow (30%)
- Black (30%)



- Cyan (30%)
- Magenta (49%)
- Yellow (51%)

Brightness & Saturation Gradients

These gradients show how the RGB color 178, 131, 124 changes by changing the brightness by 10 percent. The first figure shows a shift by +10% for each color and the second figure -10%.

Similar to the brightness gradients but the following saturation gradients show a change of the RGB color 178, 131, 124 by changing the saturation by 10% instead.

 178, 131, 124


255, 255, 255

 235, 184, 177

 255, 212, 204

 255, 240, 232

 178, 131, 124

 151, 106, 99

 124, 81, 75

 98, 58, 53

 73, 36, 31

 49, 15, 8

 26, 0, 1


 0, 0, 0

 178, 131, 124

 178, 116, 106

 178, 131, 124

 178, 146, 142


 178, 100, 88

 178, 162, 160

 178, 85, 71

 178, 177, 177

 178, 69, 53

 178, 193, 195

 178, 54, 35

 178, 208, 213

 178, 38, 17

 178, 224, 231

 178, 23, 0

 178, 239, 249

 178, 255, 255

 178, 255, 255

Harmonies

Analogous

The Analogous color harmony consists of three colors that are next to each other on the color wheel.



177, 130, 141



178, 131, 124



170, 136, 111

Triad

The Triadic color harmony groups three colors that are evenly spaced from another and form a triangle on the color wheel.



178, 131, 124



114, 151, 125



123, 143, 177

Complementary

The Complementary color scheme is a pair of colors which are on the opposite of each other on the color wheel.



178, 131, 124



124, 171, 178

Split Complementary

Split-complementary colors differ from the complementary color scheme. The scheme consists of three colors, the original color and two neighbors of the complement color.



101, 149, 173



178, 131, 124



98, 152, 143

Square

The Square scheme is like the rectangle color scheme, but the four colors are evenly spaced on the color wheel.



178, 131, 124



135, 147, 112



91, 152, 161



147, 137, 172

Rectangle

The Rectangle color scheme consists of four colors that form a rectangle on the color wheel.



178, 131, 124



160, 140, 107



91, 152, 161



115, 145, 177

Sweetspot

The Sweet Spot groups the original color and five complimentary colors.



178, 131, 124



232, 214, 211



178, 124, 172



117, 106, 104



245, 245, 245



117, 117, 117

Same Dimension

The Same Dimension uses a secret algorithm to generate beautiful new colors.



178, 131, 124



232, 159, 149



178, 157, 124



89, 81, 80



153, 20, 0



26, 3, 0

Inverse Universe

The Inverse Universe completely reimagines the original color for something new.



124, 171, 178



149, 221, 232



124, 145, 178



80, 88, 89



0, 133, 153



0, 22, 26

Previews

White Background



This preview shows how the RGB color 178, 131, 124 looks on a white background.

Color Contrast Check

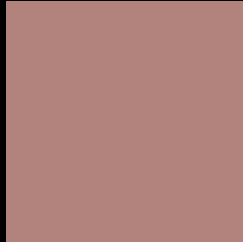
Large Text (above 18pt) WCAG AA ✓ Pass

Any Text WCAG AA ✗ Fail

Large Text (above 18pt) WCAG AAA ✗ Fail

Any Text WCAG AAA ✗ Fail

Black Background



This preview shows how the RGB color 178, 131, 124 looks on a black background.

Color Contrast Check

Large Text (above 18pt) WCAG AA ✓ Pass

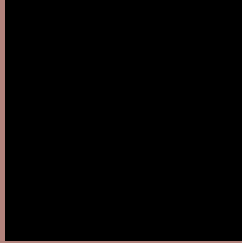
Any Text WCAG AA ✓ Pass

Large Text (above 18pt) WCAG AAA ✓ Pass

Any Text WCAG AAA × Fail

If you want to check with other color combinations, try the [Color Contrast Checker](#).

RGB 178, 131, 124 Background



This preview shows how black text looks on a background with the RGB color 178, 131, 124.



This preview shows how white text looks on a background with the RGB color 178, 131, 124.

Color Blindness Simulation

Color vision deficiency is a very complex topic, and I could not describe the different causes any better than Wikipedia does, so if you want to learn more, you should check out their [article about color blindness](#).

Dichromacy



Original Color
178, 131, 124

Protanopia
148, 142, 130

Deuteranopia
163, 137, 123



Tritanopia
180, 129, 139

Trichromacy



Original Color

178, 131, 124

Protanomaly

159, 138, 128

Deuteranomaly

168, 135, 123

Tritanomaly

179, 130, 134

Monochromacy



Original Color

178, 131, 124

Achromatopsia

144, 144, 144

Achromatomaly

156, 139, 137

CSS Examples

Text

The CSS property to change the color of the text to RGB 178, 131, 124 is called "color". The color property can be set on classes, ids or directly on the HTML element.

This example shows how text in the color rgb(178, 131, 124) looks like.

```
.text, #text, p{  
    color:rgb(178, 131, 124)  
}
```

If you want to add a text shadow in that color use the text-shadow property, you can generate a text shadow directly with our [CSS Text Shadow Generator](#).

Here you see how black text with a 4 pixel rgb(178, 131, 124) colored shadow looks like.

```
.shadow{ text-shadow: 4px 4px 2px rgb(178, 131, 124) }
```

Border

The CSS property to change the border of an element to RGB 178, 131, 124 is called "border". The border property can be set on classes, ids or directly on the HTML element.

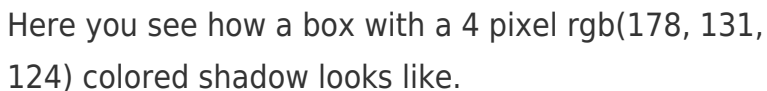
This example shows the color as border, it can be applied via the CSS property "border" or "border-color".

```
.border, #border, table{ border:4px solid rgb(178, 131, 124) }
```

If only the border color should be changed use the property `border-color`.

```
.border{ border-color:rgb(178, 131, 124) }
```

If you want to add a box shadow in that color use:



Here you see how a box with a 4 pixel `rgb(178, 131, 124)` colored shadow looks like.

```
.boxshadow{ -moz-box-shadow:4px 4px 4px  
4px rgb(178, 131, 124); -webkit-box-  
shadow:4px 4px 4px 4px rgb(178, 131, 124);  
box-shadow:4px 4px 4px 4px rgb(178, 131,  
124) }
```

Background

The CSS property to change the background color of an element to RGB 178, 131, 124 is called "background". The background property can be set on classes, ids or directly on the HTML element.

```
.background, #background, body{  
background: rgb(178, 131, 124) }
```

If only the background color should be changed can be used:

```
.background{ background-color: rgb(178,  
131, 124) }
```

This example shows the color as background, it is applied via the CSS property "background".

To optimize and compress your CSS code, you can use our [online CSS compressor and optimizer](#) based on csstidy. If you want to create a linear or radial gradient as background or border, check our [CSS Gradient Generator](#).

Hey! You found this booklet interesting? Support Converting Colors with the new Membership Option!

The pro membership hides all ads, plus gives you double the colors in the color bucket, and more awesome pro features!

[Learn more, Memberships starting at \\$2.50/m!](#)

**Follow me
on Twitter!**

@ConvertingColor