

Converting Colors

RGB(178, 158, 137)

Have a look what the booklet for
RGB(178, 158, 137) contains.

RGB(178, 158, 137)	3
<i>Conversions</i>	4
<i>Details</i>	6
<i>Harmonies</i>	11
<i>Previews</i>	23
<i>Color Blindness Simulation</i>	26
<i>CSS Examples</i>	29

Color

RGB(178, 158, 137)

Conversions

Conversions Part 1

Format	Color
Hex	B29E89
RGB	178, 158, 137
RGB Percent	70%, 62%, 54%
CMY	0.3020, 0.3804, 0.4627
CMYK	0.00, 0.11, 0.23, 0.30
HSL	31°, 21%, 62%
HSV	31°, 23%, 70%
XYZ	35.1023, 35.7248, 28.7124
YIQ	161.5860, 18.6610, -2.2910

Conversions

Conversions Part 2

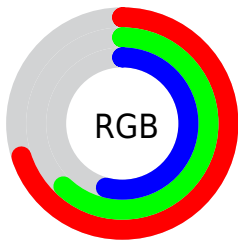
Format	Color
RYB	176, 178, 137
Decimal	11705993
CIELab	66.31, 3.95, 13.66
CIElCh	66, 14.219, 73.870
Yxy	35.7248, 0.3526, 0.3589
Android (android.graphics.Color)	4289896073 (0xFFB29E89)
YUV	161.5860, -12.1209, 14.3951
Hunter-Lab	59.7703, 0.2328, 13.3575

Details

The RGB color **178, 158, 137** is a light color, and the websafe version is hex **999999**. A complement of this color would be **137, 157, 178**, and the grayscale version is **162, 162, 162**.

A 20% lighter version of the original color is **234, 213, 190**, and **125, 107, 87** is the 20% darker color. If you saturate the color by 10%, you get **178, 149, 119**, and if you desaturate by 10%, it is **178, 167, 155**.

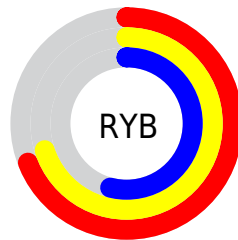
Distribution



Red (70%)

Green (62%)

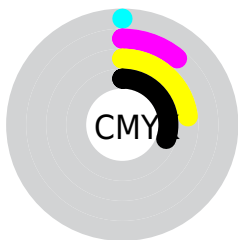
Blue (54%)



Red (69%)

Yellow (70%)

Blue (54%)

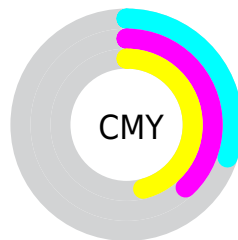


Cyan (0%)

Magenta (11%)

Yellow (23%)

Black (30%)



Cyan (30%)

Magenta (38%)

Yellow (46%)

Brightness & Saturation Gradients

These gradients show how the RGB color 178, 158, 137 changes by changing the brightness by 10 percent. The first figure shows a shift by +10% for each color and the second figure -10%.

Similar to the brightness gradients but the following saturation gradients show a change of the RGB color 178, 158, 137 by changing the saturation by 10% instead.

 178, 158, 137


255, 255, 255

 234, 213, 190

 255, 241, 218

 255, 255, 247

 178, 158, 137


 151, 132, 112

 125, 107, 87

 100, 83, 64

 75, 60, 42

 52, 38, 21


 31, 17, 0

 0, 0, 0

 178, 158, 137

 178, 149, 119

 178, 158, 137

 178, 167, 155

 178, 141, 101


 178, 175, 173

 178, 132, 84

 178, 184, 190

 178, 123, 66

 178, 193, 208

 178, 115, 48

 178, 201, 226

 178, 106, 30

 178, 210, 244

 178, 97, 12

 178, 219, 255

 178, 91, 0

 178, 227, 255

 178, 236, 255

Harmonies

Analogous

The Analogous color harmony consists of three colors that are next to each other on the color wheel.



186, 154, 144



178, 158, 137



165, 162, 136

Triad

The Triadic color harmony groups three colors that are evenly spaced from another and form a triangle on the color wheel.



178, 158, 137



129, 169, 167



171, 156, 180

Complementary

The Complementary color scheme is a pair of colors which are on the opposite of each other on the color wheel.



178, 158, 137



137, 157, 178

Split Complementary

Split-complementary colors differ from the complementary color scheme. The scheme consists of three colors, the original color and two neighbors of the complement color.



155, 160, 186



178, 158, 137



129, 167, 178

Square

The Square scheme is like the rectangle color scheme, but the four colors are evenly spaced on the color wheel.



178, 158, 137



137, 168, 154



139, 164, 185



183, 153, 169

Rectangle

The Rectangle color scheme consists of four colors that form a rectangle on the color wheel.



178, 158, 137



155, 165, 140



139, 164, 185



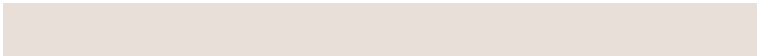
166, 157, 182

Sweetspot

The Sweet Spot groups the original color and five complimentary colors.



178, 158, 137



232, 224, 216



178, 137, 157



117, 113, 108



245, 245, 245



117, 117, 117

Same Dimension

The Same Dimension uses a secret algorithm to generate beautiful new colors.



178, 158, 137



232, 200, 167



178, 178, 137



89, 85, 80



153, 78, 0



26, 13, 0

Inverse Universe

The Inverse Universe completely reimagines the original color for something new.



137, 157, 178



167, 199, 232



137, 137, 178



80, 85, 89



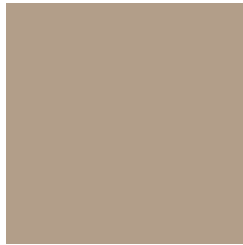
0, 75, 153



0, 12, 26

Previews

White Background



This preview shows how the RGB color 178, 158, 137 looks on a white background.

Color Contrast Check

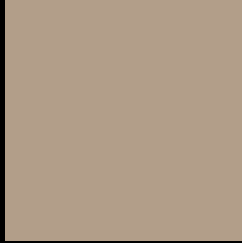
Large Text (above 18pt) WCAG AA × Fail

Any Text WCAG AA × Fail

Large Text (above 18pt) WCAG AAA × Fail

Any Text WCAG AAA × Fail

Black Background



This preview shows how the RGB color 178, 158, 137 looks on a black background.

Color Contrast Check

Large Text (above 18pt) WCAG AA ✓ Pass

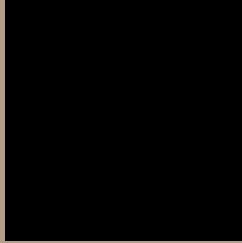
Any Text WCAG AA ✓ Pass

Large Text (above 18pt) WCAG AAA ✓ Pass

Any Text WCAG AAA ✓ Pass

If you want to check with other color combinations, try the [Color Contrast Checker](#).

RGB 178, 158, 137 Background



This preview shows how black text looks on a background with the RGB color 178, 158, 137.



This preview shows how white text looks on a background with the RGB color 178, 158, 137.

Color Blindness Simulation

Color vision deficiency is a very complex topic, and I could not describe the different causes any better than Wikipedia does, so if you want to learn more, you should check out their [article about color blindness](#).

Dichromacy



Original Color
178, 158, 137

Protanopia
169, 161, 138

Deuteranopia
185, 155, 138



Tritanopia
182, 154, 166

Trichromacy



Original Color

178, 158, 137

Protanomaly

172, 160, 138

Deuteranomaly

182, 156, 138

Tritanomaly

181, 155, 155

Monochromacy



Original Color

178, 158, 137

Achromatopsia

162, 162, 162

Achromatomaly

168, 161, 153

CSS Examples

Text

The CSS property to change the color of the text to RGB 178, 158, 137 is called "color". The color property can be set on classes, ids or directly on the HTML element.

This example shows how text in the color rgb(178, 158, 137) looks like.

```
.text, #text, p{  
    color:rgb(178, 158, 137)  
}
```

If you want to add a text shadow in that color use the text-shadow property, you can generate a text shadow directly with our [CSS Text Shadow Generator](#).

Here you see how black text with a 4 pixel rgb(178, 158, 137) colored shadow looks like.

```
.shadow{ text-shadow: 4px 4px 2px rgb(178, 158, 137) }
```

Border

The CSS property to change the border of an element to RGB 178, 158, 137 is called "border". The border property can be set on classes, ids or directly on the HTML element.

This example shows the color as border, it can be applied via the CSS property "border" or "border-color".

```
.border, #border, table{ border:4px solid rgb(178, 158, 137) }
```

If only the border color should be changed use the property `border-color`.

```
.border{ border-color:rgb(178, 158, 137) }
```

If you want to add a box shadow in that color use:

Here you see how a box with a 4 pixel `rgb(178, 158, 137)` colored shadow looks like.

```
.boxshadow{ -moz-box-shadow:4px 4px 4px  
4px rgb(178, 158, 137); -webkit-box-  
shadow:4px 4px 4px 4px rgb(178, 158, 137);  
box-shadow:4px 4px 4px 4px rgb(178, 158,  
137) }
```

Background

The CSS property to change the background color of an element to RGB 178, 158, 137 is called "background". The background property can be set on classes, ids or directly on the HTML element.

```
.background, #background, body{  
background: rgb(178, 158, 137) }
```

If only the background color should be changed can be used:

```
.background{ background-color: rgb(178,  
158, 137) }
```

This example shows the color as background, it is applied via the CSS property "background".

To optimize and compress your CSS code, you can use our [online CSS compressor and optimizer](#) based on csstidy. If you want to create a linear or radial gradient as background or border, check our [CSS Gradient Generator](#).

Hey! You found this booklet interesting? Support Converting Colors with the new Membership Option!

The pro membership hides all ads, plus gives you double the colors in the color bucket, and more awesome pro features!

[Learn more, Memberships starting at \\$2.50/m!](#)

**Follow me
on Twitter!**

@ConvertingColor