

Converting Colors

RGB(179, 126, 138)

Have a look what the booklet for
RGB(179, 126, 138) contains.

RGB(179, 126, 138)	3
<i>Conversions</i>	4
<i>Details</i>	6
<i>Harmonies</i>	11
<i>Previews</i>	23
<i>Color Blindness Simulation</i>	26
<i>CSS Examples</i>	29

Color

RGB(179, 126, 138)

Conversions

Conversions Part 1

Format	Color
Hex	B37E8A
RGB	179, 126, 138
RGB Percent	70%, 49%, 54%
CMY	0.2980, 0.5059, 0.4588
CMYK	0.00, 0.30, 0.23, 0.30
HSL	346°, 26%, 60%
HSV	346°, 30%, 70%
XYZ	30.6387, 26.3404, 27.5141
YIQ	143.2150, 27.7360, 14.9680

Conversions

Conversions Part 2

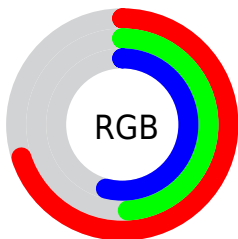
Format	Color
R_{YB}	179, 126, 138
Decimal	11763338
CIE _{Lab}	58.36, 22.32, 1.76
CIE _{LCh}	58, 22.389, 4.513
Yxy	26.3404, 0.3626, 0.3117
Android (android.graphics.Color)	4289953418 (0xFFB37E8A)
YUV	143.2150, -2.5710, 31.3834
Hunter-Lab	51.3229, 16.7457, 4.1407

Details

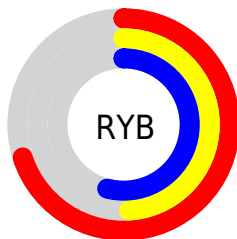
The RGB color **179, 126, 138** is a dark color, and the websafe version is hex **CC9999**. A complement of this color would be **126, 179, 167**, and the grayscale version is **143, 143, 143**.

A 20% lighter version of the original color is **236, 179, 191**, and **125, 76, 88** is the 20% darker color. If you saturate the color by 10%, you get **179, 108, 124**, and if you desaturate by 10%, it is **179, 144, 152**.

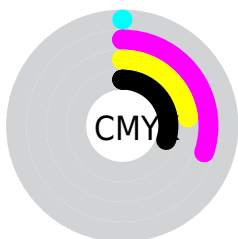
Distribution



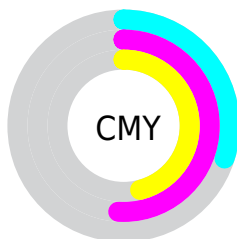
- Red (70%)
- Green (49%)
- Blue (54%)



- Red (70%)
- Yellow (49%)
- Blue (54%)



- Cyan (0%)
- Magenta (30%)
- Yellow (23%)
- Black (30%)



- Cyan (30%)
- Magenta (51%)
- Yellow (46%)

Brightness & Saturation Gradients

These gradients show how the RGB color 179, 126, 138 changes by changing the brightness by 10 percent. The first figure shows a shift by +10% for each color and the second figure -10%.

Similar to the brightness gradients but the following saturation gradients show a change of the RGB color 179, 126, 138 by changing the saturation by 10% instead.

 179, 126, 138

255, 255, 255

 236, 179, 191

 255, 207, 219

 255, 235, 248

 179, 126, 138

 152, 101, 113

 125, 76, 88

 99, 53, 65

 74, 31, 43

 50, 8, 23

 29, 0, 1

 0, 0, 0

 179, 126, 138

 179, 108, 124


 179, 126, 138

 179, 144, 152

 179, 90, 110

 179, 162, 166

 179, 72, 96

 179, 180, 180

 179, 54, 83

 179, 198, 193

 179, 37, 69

 179, 216, 207

 179, 19, 55

 179, 233, 221

 179, 1, 41

 179, 251, 235

 179, 0, 41

 179, 255, 249

 179, 255, 255

Harmonies

Analogous

The Analogous color harmony consists of three colors that are next to each other on the color wheel.



168, 128, 158



179, 126, 138



179, 128, 119

Triad

The Triadic color harmony groups three colors that are evenly spaced from another and form a triangle on the color wheel.



179, 126, 138



130, 146, 108



95, 147, 175

Complementary

The Complementary color scheme is a pair of colors which are on the opposite of each other on the color wheel.



179, 126, 138



126, 179, 167

Split Complementary

Split-complementary colors differ from the complementary color scheme. The scheme consists of three colors, the original color and two neighbors of the complement color.



82, 150, 162



179, 126, 138



108, 150, 123

Square

The Square scheme is like the rectangle color scheme, but the four colors are evenly spaced on the color wheel.



179, 126, 138



152, 140, 101



89, 151, 143



120, 141, 179

Rectangle

The Rectangle color scheme consists of four colors that form a rectangle on the color wheel.



179, 126, 138



173, 131, 109



89, 151, 143



88, 148, 172

Sweetspot

The Sweet Spot groups the original color and five complimentary colors.



179, 126, 138



232, 211, 216



167, 126, 179



117, 104, 107



245, 245, 245



117, 117, 117

Same Dimension

The Same Dimension uses a secret algorithm to generate beautiful new colors.



179, 126, 138



232, 149, 167



179, 140, 126



89, 80, 82



153, 0, 35



26, 0, 6

Inverse Universe

The Inverse Universe completely reimagines the original color for something new.



179, 126, 138



232, 149, 167



126, 165, 179



89, 80, 82



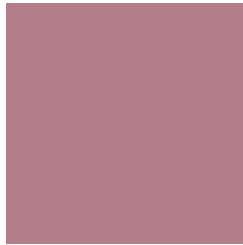
153, 0, 35



26, 0, 6

Previews

White Background



This preview shows how the RGB color 179, 126, 138 looks on a white background.

Color Contrast Check

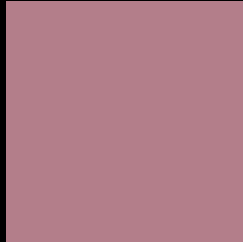
Large Text (above 18pt) WCAG AA ✓ Pass

Any Text WCAG AA ✗ Fail

Large Text (above 18pt) WCAG AAA ✗ Fail

Any Text WCAG AAA ✗ Fail

Black Background



This preview shows how the RGB color 179, 126, 138 looks on a black background.

Color Contrast Check

Large Text (above 18pt) WCAG AA ✓ Pass

Any Text WCAG AA ✓ Pass

Large Text (above 18pt) WCAG AAA ✓ Pass

Any Text WCAG AAA × Fail

If you want to check with other color combinations, try the [Color Contrast Checker](#).

RGB 179, 126, 138 Background



This preview shows how black text looks on a background with the RGB color 179, 126, 138.



This preview shows how white text looks on a background with the RGB color 179, 126, 138.

Color Blindness Simulation

Color vision deficiency is a very complex topic, and I could not describe the different causes any better than Wikipedia does, so if you want to learn more, you should check out their [article about color blindness](#).

Dichromacy





Tritanopia
179, 126, 136

Trichromacy



Original Color

179, 126, 138

Protanomaly

155, 135, 143

Deuteranomaly

164, 132, 137

Tritanomaly

179, 126, 137

Monochromacy



Original Color

179, 126, 138

Achromatopsia

143, 143, 143

Achromatomaly

156, 137, 141

CSS Examples

Text

The CSS property to change the color of the text to RGB 179, 126, 138 is called "color". The color property can be set on classes, ids or directly on the HTML element.

This example shows how text in the color rgb(179, 126, 138) looks like.

```
.text, #text, p{  
    color:rgb(179, 126, 138)  
}
```

If you want to add a text shadow in that color use the text-shadow property, you can generate a text shadow directly with our [CSS Text Shadow Generator](#).

Here you see how black text with a 4 pixel rgb(179, 126, 138) colored shadow looks like.

```
.shadow{ text-shadow: 4px 4px 2px rgb(179, 126, 138) }
```

Border

The CSS property to change the border of an element to RGB 179, 126, 138 is called "border". The border property can be set on classes, ids or directly on the HTML element.

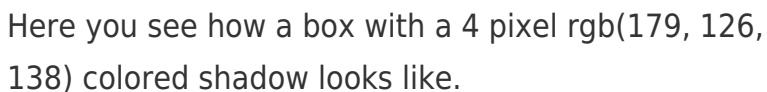
This example shows the color as border, it can be applied via the CSS property "border" or "border-color".

```
.border, #border, table{ border:4px solid rgb(179, 126, 138) }
```

If only the border color should be changed use the property `border-color`.

```
.border{ border-color:rgb(179, 126, 138) }
```

If you want to add a box shadow in that color use:



Here you see how a box with a 4 pixel `rgb(179, 126, 138)` colored shadow looks like.

```
.boxshadow{ -moz-box-shadow:4px 4px 4px 4px rgb(179, 126, 138); -webkit-box-shadow:4px 4px 4px 4px rgb(179, 126, 138); box-shadow:4px 4px 4px 4px rgb(179, 126, 138) }
```

Background

The CSS property to change the background color of an element to RGB 179, 126, 138 is called "background". The background property can be set on classes, ids or directly on the HTML element.

```
.background, #background, body{  
background: rgb(179, 126, 138) }
```

If only the background color should be changed can be used:

```
.background{ background-color: rgb(179,  
126, 138) }
```

This example shows the color as background, it is applied via the CSS property "background".

To optimize and compress your CSS code, you can use our [online CSS compressor and optimizer](#) based on csstidy. If you want to create a linear or radial gradient as background or border, check our [CSS Gradient Generator](#).

Hey! You found this booklet interesting? Support Converting Colors with the new Membership Option!

The pro membership hides all ads, plus gives you double the colors in the color bucket, and more awesome pro features!

[Learn more, Memberships starting at \\$2.50/m!](#)

**Follow me
on Twitter!**

@ConvertingColor