

Converting Colors

RGB(179, 130, 132)

Have a look what the booklet for
RGB(179, 130, 132) contains.

RGB(179, 130, 132)	3
<i>Conversions</i>	4
<i>Details</i>	6
<i>Harmonies</i>	11
<i>Previews</i>	23
<i>Color Blindness Simulation</i>	26
<i>CSS Examples</i>	29

Color

RGB(179, 130, 132)

Conversions

Conversions Part 1

Format	Color
Hex	B38284
RGB	179, 130, 132
RGB Percent	70%, 51%, 52%
CMY	0.2980, 0.4902, 0.4824
CMYK	0.00, 0.27, 0.26, 0.30
HSL	358°, 24%, 61%
HSV	358°, 27%, 70%
XYZ	30.7379, 27.2149, 25.4627
YIQ	144.8790, 28.5620, 11.0100

Conversions

Conversions Part 2

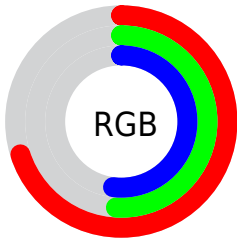
Format	Color
RYB	179, 130, 132
Decimal	11764356
CIELab	59.17, 19.18, 6.39
CIELCh	59, 20.217, 18.423
Yxy	27.2149, 0.3685, 0.3263
Android (android.graphics.Color)	4289954436 (0xFFB38284)
YUV	144.8790, -6.3493, 29.9241
Hunter-Lab	52.1679, 13.8803, 7.5786

Details

The RGB color **179, 130, 132** is a light color, and the websafe version is hex **CC9999**. A complement of this color would be **130, 179, 177**, and the grayscale version is **145, 145, 145**.

A 20% lighter version of the original color is **236, 183, 185**, and **125, 80, 83** is the 20% darker color. If you saturate the color by 10%, you get **179, 112, 115**, and if you desaturate by 10%, it is **179, 148, 149**.

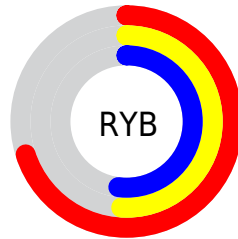
Distribution



Red (70%)

Green (51%)

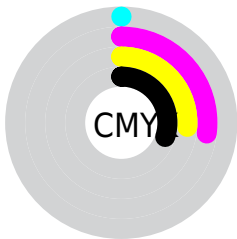
Blue (52%)



Red (70%)

Yellow (51%)

Blue (52%)

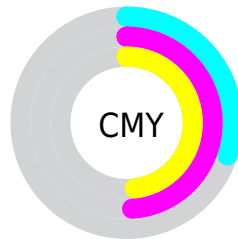


Cyan (0%)

Magenta (27%)

Yellow (26%)

Black (30%)



Cyan (30%)

Magenta (49%)

Yellow (48%)

Brightness & Saturation Gradients

These gradients show how the RGB color 179, 130, 132 changes by changing the brightness by 10 percent. The first figure shows a shift by +10% for each color and the second figure -10%.

Similar to the brightness gradients but the following saturation gradients show a change of the RGB color 179, 130, 132 by changing the saturation by 10% instead.

 179, 130, 132


255, 255, 255

 236, 183, 185

 255, 211, 213


 255, 239, 241

 179, 130, 132

 152, 105, 107

 125, 80, 83

 99, 57, 60

 74, 35, 38

 50, 13, 17

 29, 0, 1

 0, 0, 0

 179, 130, 132

 179, 112, 115

 179, 130, 132

 179, 148, 149

 179, 94, 98

 179, 166, 166

 179, 76, 80

 179, 184, 184

 179, 58, 63

 179, 202, 201

 179, 41, 46

 179, 219, 218

 179, 23, 29

 179, 237, 235

 179, 5, 12

 179, 255, 252

 179, 0, 7

 179, 255, 255

Harmonies

Analogous

The Analogous color harmony consists of three colors that are next to each other on the color wheel.



174, 130, 150



179, 130, 132



175, 133, 117

Triad

The Triadic color harmony groups three colors that are evenly spaced from another and form a triangle on the color wheel.



179, 130, 132



124, 149, 118



112, 146, 177

Complementary

The Complementary color scheme is a pair of colors which are on the opposite of each other on the color wheel.



179, 130, 132



130, 179, 177

Split Complementary

Split-complementary colors differ from the complementary color scheme. The scheme consists of three colors, the original color and two neighbors of the complement color.



95, 150, 168



179, 130, 132



105, 152, 135

Square

The Square scheme is like the rectangle color scheme, but the four colors are evenly spaced on the color wheel.



179, 130, 132



144, 145, 109



93, 152, 153



136, 140, 176

Rectangle

The Rectangle color scheme consists of four colors that form a rectangle on the color wheel.



179, 130, 132



167, 137, 110



93, 152, 153



105, 148, 175

Sweetspot

The Sweet Spot groups the original color and five complimentary colors.



179, 130, 132



232, 213, 214



177, 130, 179



117, 106, 106



245, 245, 245



117, 117, 117

Same Dimension

The Same Dimension uses a secret algorithm to generate beautiful new colors.



179, 130, 132



232, 155, 159



179, 152, 130



89, 80, 81



153, 0, 6



26, 0, 1

Inverse Universe

The Inverse Universe completely reimagines the original color for something new.



179, 130, 132



232, 155, 159



130, 157, 179



89, 80, 81



153, 0, 6



26, 0, 1

Previews

White Background



This preview shows how the RGB color 179, 130, 132 looks on a white background.

Color Contrast Check

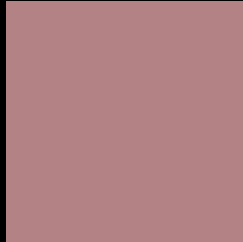
Large Text (above 18pt) WCAG AA ✓ Pass

Any Text WCAG AA ✗ Fail

Large Text (above 18pt) WCAG AAA ✗ Fail

Any Text WCAG AAA ✗ Fail

Black Background



This preview shows how the RGB color 179, 130, 132 looks on a black background.

Color Contrast Check

Large Text (above 18pt) WCAG AA ✓ Pass

Any Text WCAG AA ✓ Pass

Large Text (above 18pt) WCAG AAA ✓ Pass

Any Text WCAG AAA × Fail

If you want to check with other color combinations, try the [Color Contrast Checker](#).

RGB 179, 130, 132 Background



This preview shows how black text looks on a background with the RGB color 179, 130, 132.



This preview shows how white text looks on a background with the RGB color 179, 130, 132.

Color Blindness Simulation

Color vision deficiency is a very complex topic, and I could not describe the different causes any better than Wikipedia does, so if you want to learn more, you should check out their [article about color blindness](#).


Dichromacy



Original Color
179, 130, 132

Protanopia
146, 142, 139

Deuteranopia
161, 138, 131



Tritanopia
180, 129, 139

Trichromacy



Original Color

179, 130, 132

Protanomaly

158, 138, 136

Deuteranomaly

168, 135, 131

Tritanomaly

180, 129, 136

Monochromacy



Original Color

179, 130, 132

Achromatopsia

145, 145, 145

Achromatomaly

157, 140, 140

CSS Examples

Text

The CSS property to change the color of the text to RGB 179, 130, 132 is called "color". The color property can be set on classes, ids or directly on the HTML element.

This example shows how text in the color `rgb(179, 130, 132)` looks like.

```
.text, #text, p{  
    color:rgb(179, 130, 132)  
}
```

If you want to add a text shadow in that color use the text-shadow property, you can generate a text shadow directly with our [CSS Text Shadow Generator](#).

Here you see how black text with a 4 pixel rgb(179, 130, 132) colored shadow looks like.

```
.shadow{ text-shadow: 4px 4px 2px rgb(179, 130, 132) }
```

Border

The CSS property to change the border of an element to RGB 179, 130, 132 is called "border". The border property can be set on classes, ids or directly on the HTML element.

This example shows the color as border, it can be applied via the CSS property "border" or "border-color".

```
.border, #border, table{ border:4px solid rgb(179, 130, 132) }
```

If only the border color should be changed use the property `border-color`.

```
.border{ border-color:rgb(179, 130, 132) }
```

If you want to add a box shadow in that color use:

Here you see how a box with a 4 pixel `rgb(179, 130, 132)` colored shadow looks like.

```
.boxshadow{ -moz-box-shadow:4px 4px 4px  
4px rgb(179, 130, 132); -webkit-box-  
shadow:4px 4px 4px 4px rgb(179, 130, 132);  
box-shadow:4px 4px 4px 4px rgb(179, 130,  
132) }
```

Background

The CSS property to change the background color of an element to RGB 179, 130, 132 is called "background". The background property can be set on classes, ids or directly on the HTML element.

```
.background, #background, body{  
background: rgb(179, 130, 132) }
```

If only the background color should be changed can be used:

```
.background{ background-color: rgb(179,  
130, 132) }
```

This example shows the color as background, it is applied via the CSS property "background".

To optimize and compress your CSS code, you can use our [online CSS compressor and optimizer](#) based on csstidy. If you want to create a linear or radial gradient as background or border, check our [CSS Gradient Generator](#).

Hey! You found this booklet interesting? Support Converting Colors with the new Membership Option!

The pro membership hides all ads, plus gives you double the colors in the color bucket, and more awesome pro features!

[Learn more, Memberships starting at \\$2.50/m!](#)

**Follow me
on Twitter!**

@ConvertingColor