

Converting Colors

RGB(179, 135, 126)

Have a look what the booklet for
RGB(179, 135, 126) contains.

RGB(179, 135, 126)	3
<i>Conversions</i>	4
<i>Details</i>	6
<i>Harmonies</i>	11
<i>Previews</i>	23
<i>Color Blindness Simulation</i>	26
<i>CSS Examples</i>	29

Color

RGB(179, 135, 126)

Conversions

Conversions Part 1

Format	Color
Hex	B3877E
RGB	179, 135, 126
RGB Percent	70%, 53%, 49%
CMY	0.2980, 0.4706, 0.5059
CMYK	0.00, 0.25, 0.30, 0.30
HSL	10°, 26%, 60%
HSV	10°, 30%, 70%
XYZ	31.0203, 28.4180, 23.5889
YIQ	147.1300, 29.1130, 6.5290

Conversions

Conversions Part 2

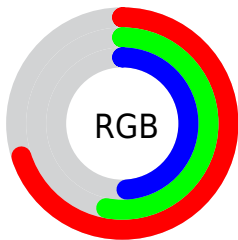
Format	Color
R_{YB}	179, 137, 126
Decimal	11765630
CIE _{Lab}	60.26, 15.52, 11.37
CIE _{LCh}	60, 19.242, 36.225
Yxy	28.4180, 0.3736, 0.3423
Android (android.graphics.Color)	4289955710 (0xFFB3877E)
YUV	147.1300, -10.4171, 27.9500
Hunter-Lab	53.3085, 10.5793, 11.0803

Details

The RGB color **179, 135, 126** is a dark color, and the websafe version is hex **CC9999**. A complement of this color would be **126, 170, 179**, and the grayscale version is **147, 147, 147**.

A 20% lighter version of the original color is **236, 188, 179**, and **125, 85, 77** is the 20% darker color. If you saturate the color by 10%, you get **179, 120, 108**, and if you desaturate by 10%, it is **179, 150, 144**.

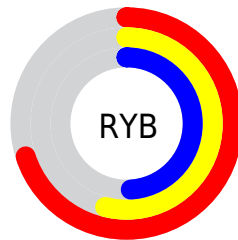
Distribution



Red (70%)

Green (53%)

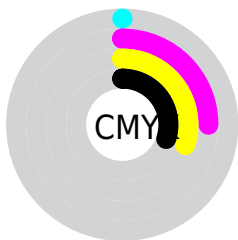
Blue (49%)



Red (70%)

Yellow (54%)

Blue (49%)

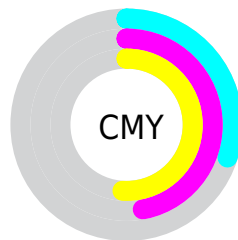


Cyan (0%)

Magenta (25%)

Yellow (30%)

Black (30%)



Cyan (30%)

Magenta (47%)

Yellow (51%)

Brightness & Saturation Gradients

These gradients show how the RGB color 179, 135, 126 changes by changing the brightness by 10 percent. The first figure shows a shift by +10% for each color and the second figure -10%.

Similar to the brightness gradients but the following saturation gradients show a change of the RGB color 179, 135, 126 by changing the saturation by 10% instead.

 179, 135, 126

255, 255, 255

 236, 188, 179


 255, 216, 206

 255, 245, 234


 179, 135, 126

 152, 110, 101

 125, 85, 77

 99, 62, 54

 74, 39, 33

 51, 18, 11

 30, 0, 1

 0, 0, 0

 179, 135, 126

 179, 120, 108

 179, 135, 126

 179, 150, 144

 179, 105, 90

 179, 165, 162

 179, 90, 72

 179, 180, 180

 179, 76, 54

 179, 194, 198

 179, 61, 37

 179, 209, 216

 179, 46, 19

 179, 224, 233

 179, 31, 1

 179, 239, 251

 179, 30, 0

 179, 254, 255

 179, 255, 255

Harmonies

Analogous

The Analogous color harmony consists of three colors that are next to each other on the color wheel.



179, 133, 142



179, 135, 126



170, 140, 115

Triad

The Triadic color harmony groups three colors that are evenly spaced from another and form a triangle on the color wheel.



179, 135, 126



117, 154, 131



130, 146, 179

Complementary

The Complementary color scheme is a pair of colors which are on the opposite of each other on the color wheel.



179, 135, 126



126, 170, 179

Split Complementary

Split-complementary colors differ from the complementary color scheme. The scheme consists of three colors, the original color and two neighbors of the complement color.



109, 151, 176



179, 135, 126



102, 155, 148

Square

The Square scheme is like the rectangle color scheme, but the four colors are evenly spaced on the color wheel.



179, 135, 126



136, 150, 118



98, 154, 165



153, 140, 173

Rectangle

The Rectangle color scheme consists of four colors that form a rectangle on the color wheel.



179, 135, 126



160, 143, 112



98, 154, 165



122, 147, 179

Sweetspot

The Sweet Spot groups the original color and five complimentary colors.



179, 135, 126



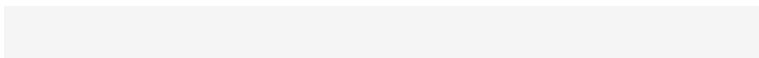
232, 215, 211



179, 126, 170



117, 107, 104



245, 245, 245



117, 117, 117

Same Dimension

The Same Dimension uses a secret algorithm to generate beautiful new colors.



179, 135, 126



232, 163, 149



179, 161, 126



89, 82, 80



153, 26, 0



26, 4, 0

Inverse Universe

The Inverse Universe completely reimagines the original color for something new.



126, 170, 179



149, 218, 232



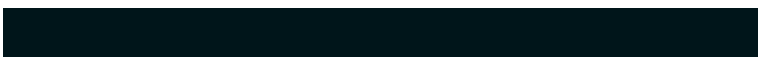
126, 144, 179



80, 88, 89



0, 127, 153



0, 21, 26

Previews

White Background



This preview shows how the RGB color 179, 135, 126 looks on a white background.

Color Contrast Check

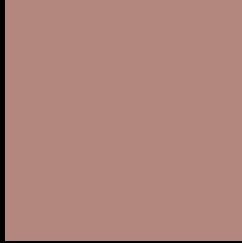
Large Text (above 18pt) WCAG AA ✓ Pass

Any Text WCAG AA ✗ Fail

Large Text (above 18pt) WCAG AAA ✗ Fail

Any Text WCAG AAA ✗ Fail

Black Background



This preview shows how the RGB color 179, 135, 126 looks on a black background.

Color Contrast Check

Large Text (above 18pt) WCAG AA ✓ Pass

Any Text WCAG AA ✓ Pass

Large Text (above 18pt) WCAG AAA ✓ Pass

Any Text WCAG AAA × Fail

If you want to check with other color combinations, try the [Color Contrast Checker](#).

RGB 179, 135, 126 Background



This preview shows how black text looks on a background with the RGB color 179, 135, 126.




This preview shows how white text looks on a background with the RGB color 179, 135, 126.

Color Blindness Simulation

Color vision deficiency is a very complex topic, and I could not describe the different causes any better than Wikipedia does, so if you want to learn more, you should check out their [article about color blindness](#).

Dichromacy





Tritanopia
181, 133, 143

Trichromacy



Original Color

179, 135, 126

Protanomaly

162, 141, 129

Deuteranomaly

171, 138, 125

Tritanomaly

180, 134, 137

Monochromacy



Original Color

179, 135, 126

Achromatopsia

147, 147, 147

Achromatomaly

159, 143, 139

CSS Examples

Text

The CSS property to change the color of the text to RGB 179, 135, 126 is called "color". The color property can be set on classes, ids or directly on the HTML element.

This example shows how text in the color rgb(179, 135, 126) looks like.

```
.text, #text, p{  
    color:rgb(179, 135, 126)  
}
```

If you want to add a text shadow in that color use the text-shadow property, you can generate a text shadow directly with our [CSS Text Shadow Generator](#).

Here you see how black text with a 4 pixel rgb(179, 135, 126) colored shadow looks like.

```
.shadow{ text-shadow: 4px 4px 2px rgb(179, 135, 126) }
```

Border

The CSS property to change the border of an element to RGB 179, 135, 126 is called "border". The border property can be set on classes, ids or directly on the HTML element.

This example shows the color as border, it can be applied via the CSS property "border" or "border-color".

```
.border, #border, table{ border:4px solid rgb(179, 135, 126) }
```

If only the border color should be changed use the property `border-color`.

```
.border{ border-color:rgb(179, 135, 126) }
```

If you want to add a box shadow in that color use:

Here you see how a box with a 4 pixel `rgb(179, 135, 126)` colored shadow looks like.

```
.boxshadow{ -moz-box-shadow:4px 4px 4px  
4px rgb(179, 135, 126); -webkit-box-  
shadow:4px 4px 4px 4px rgb(179, 135, 126);  
box-shadow:4px 4px 4px 4px rgb(179, 135,  
126) }
```

Background

The CSS property to change the background color of an element to RGB 179, 135, 126 is called "background". The background property can be set on classes, ids or directly on the HTML element.

```
.background, #background, body{  
background: rgb(179, 135, 126) }
```

If only the background color should be changed can be used:

```
.background{ background-color: rgb(179,  
135, 126) }
```

This example shows the color as background, it is applied via the CSS property "background".

To optimize and compress your CSS code, you can use our [online CSS compressor and optimizer](#) based on csstidy. If you want to create a linear or radial gradient as background or border, check our [CSS Gradient Generator](#).

Hey! You found this booklet interesting? Support Converting Colors with the new Membership Option!

The pro membership hides all ads, plus gives you double the colors in the color bucket, and more awesome pro features!

[Learn more, Memberships starting at \\$2.50/m!](#)

**Follow me
on Twitter!**

@ConvertingColor