

Converting Colors

RGB(179, 140, 116)

Have a look what the booklet for
RGB(179, 140, 116) contains.

RGB(179, 140, 116)	3
<i>Conversions</i>	4
<i>Details</i>	6
<i>Harmonies</i>	11
<i>Previews</i>	23
<i>Color Blindness Simulation</i>	26
<i>CSS Examples</i>	29

Color

RGB(179, 140, 116)

Conversions

Conversions Part 1

Format	Color
Hex	B38C74
RGB	179, 140, 116
RGB Percent	70%, 55%, 45%
CMY	0.2980, 0.4510, 0.5451
CMYK	0.00, 0.22, 0.35, 0.30
HSL	23°, 29%, 58%
HSV	23°, 35%, 70%
XYZ	31.1209, 29.6008, 20.5963
YIQ	148.9250, 30.9480, 0.8040

Conversions

Conversions Part 2

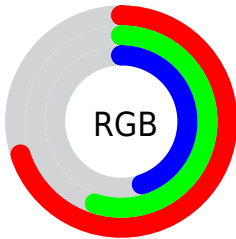
Format	Color
R_{YB}	179, 155, 116
Decimal	11766900
CIE _{Lab}	61.31, 11.40, 18.48
CIE _{LCh}	61, 21.712, 58.344
Yxy	29.6008, 0.3827, 0.3640
Android (android.graphics.Color)	4289956980 (0xFFB38C74)
YUV	148.9250, -16.2320, 26.3758
Hunter-Lab	54.4066, 6.8913, 15.6397

Details

The RGB color **179, 140, 116** is a dark color, and the websafe version is hex **CC9999**. A complement of this color would be **116, 155, 179**, and the grayscale version is **149, 149, 149**.

A 20% lighter version of the original color is **236, 194, 168**, and **125, 90, 68** is the 20% darker color. If you saturate the color by 10%, you get **179, 129, 98**, and if you desaturate by 10%, it is **179, 151, 134**.

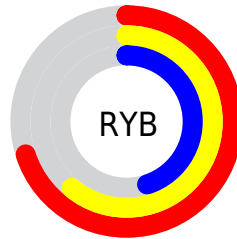
Distribution



Red (70%)

Green (55%)

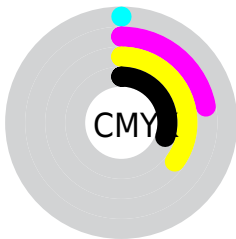
Blue (45%)



Red (70%)

Yellow (61%)

Blue (45%)

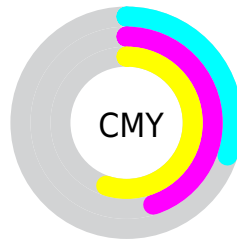


Cyan (0%)

Magenta (22%)

Yellow (35%)

Black (30%)



Cyan (30%)

Magenta (45%)

Yellow (55%)

Brightness & Saturation Gradients

These gradients show how the RGB color 179, 140, 116 changes by changing the brightness by 10 percent. The first figure shows a shift by +10% for each color and the second figure -10%.

Similar to the brightness gradients but the following saturation gradients show a change of the RGB color 179, 140, 116 by changing the saturation by 10% instead.

 179, 140, 116

255, 255, 255

 236, 194, 168

 255, 222, 195

 255, 250, 223

 255, 255, 252

 179, 140, 116

 179, 129, 98


 179, 140, 116

 152, 114, 91

 125, 90, 68

 99, 66, 45

 74, 44, 24


 51, 23, 0

 27, 0, 0


 0, 0, 0

 179, 140, 116

 179, 151, 134

 179, 118, 80

 179, 162, 152

 179, 107, 62

 179, 173, 170

 179, 96, 44

 179, 184, 188

 179, 85, 27

 179, 195, 205

 179, 74, 9

 179, 206, 223

 179, 68, 0

 179, 218, 241

 179, 229, 255

 179, 240, 255

Harmonies

Analogous

The Analogous color harmony consists of three colors that are next to each other on the color wheel.



187, 135, 131



179, 140, 116



163, 146, 110

Triad

The Triadic color harmony groups three colors that are evenly spaced from another and form a triangle on the color wheel.



179, 140, 116



101, 159, 146



150, 143, 182

Complementary

The Complementary color scheme is a pair of colors which are on the opposite of each other on the color wheel.



179, 140, 116



116, 155, 179

Split Complementary

Split-complementary colors differ from the complementary color scheme. The scheme consists of three colors, the original color and two neighbors of the complement color.



123, 150, 186



179, 140, 116



92, 158, 165

Square

The Square scheme is like the rectangle color scheme, but the four colors are evenly spaced on the color wheel.



179, 140, 116



121, 157, 127



101, 155, 180



172, 137, 168

Rectangle

The Rectangle color scheme consists of four colors that form a rectangle on the color wheel.



179, 140, 116



150, 150, 111



101, 155, 180



141, 146, 184

Sweetspot

The Sweet Spot groups the original color and five complimentary colors.



179, 140, 116



232, 216, 207



179, 116, 156



117, 108, 102



245, 245, 245



117, 117, 117

Same Dimension

The Same Dimension uses a secret algorithm to generate beautiful new colors.



179, 140, 116



232, 172, 135



179, 171, 116



89, 84, 80



153, 58, 0



26, 10, 0

Inverse Universe

The Inverse Universe completely reimagines the original color for something new.



116, 155, 179



135, 195, 232



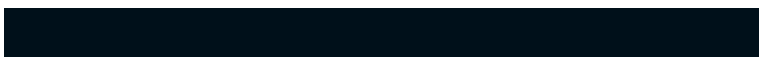
116, 124, 179



80, 86, 89



0, 95, 153



0, 16, 26

Previews

White Background



This preview shows how the RGB color 179, 140, 116 looks on a white background.

Color Contrast Check

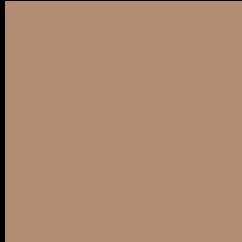
Large Text (above 18pt) WCAG AA ✓ Pass

Any Text WCAG AA × Fail

Large Text (above 18pt) WCAG AAA × Fail

Any Text WCAG AAA × Fail

Black Background



This preview shows how the RGB color 179, 140, 116 looks on a black background.

Color Contrast Check

Large Text (above 18pt) WCAG AA ✓ Pass

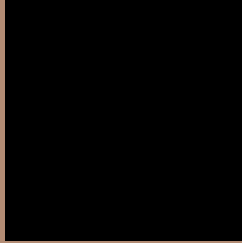
Any Text WCAG AA ✓ Pass

Large Text (above 18pt) WCAG AAA ✓ Pass

Any Text WCAG AAA × Fail

If you want to check with other color combinations, try the [Color Contrast Checker](#).

RGB 179, 140, 116 Background



This preview shows how black text looks on a background with the RGB color 179, 140, 116.



This preview shows how white text looks on a background with the RGB color 179, 140, 116.

Color Blindness Simulation

Color vision deficiency is a very complex topic, and I could not describe the different causes any better than Wikipedia does, so if you want to learn more, you should check out their [article about color blindness](#).

Dichromacy



Original Color
179, 140, 116

Protanopia
157, 148, 120

Deuteranopia
174, 142, 116



Tritanopia
182, 136, 146

Trichromacy



Original Color

179, 140, 116

Protanomaly

165, 145, 119

Deuteranomaly

176, 141, 116

Tritanomaly

181, 137, 135

Monochromacy



Original Color

179, 140, 116

Achromatopsia

149, 149, 149

Achromatomaly

160, 146, 137

CSS Examples

Text

The CSS property to change the color of the text to RGB 179, 140, 116 is called "color". The color property can be set on classes, ids or directly on the HTML element.

This example shows how text in the color `rgb(179, 140, 116)` looks like.

```
.text, #text, p{  
    color:rgb(179, 140, 116)  
}
```

If you want to add a text shadow in that color use the text-shadow property, you can generate a text shadow directly with our [CSS Text Shadow Generator](#).

Here you see how black text with a 4 pixel rgb(179, 140, 116) colored shadow looks like.

```
.shadow{ text-shadow: 4px 4px 2px rgb(179, 140, 116) }
```

Border

The CSS property to change the border of an element to RGB 179, 140, 116 is called "border". The border property can be set on classes, ids or directly on the HTML element.

This example shows the color as border, it can be applied via the CSS property "border" or "border-color".

```
.border, #border, table{ border:4px solid rgb(179, 140, 116) }
```

If only the border color should be changed use the property `border-color`.

```
.border{ border-color:rgb(179, 140, 116) }
```

If you want to add a box shadow in that color use:

Here you see how a box with a 4 pixel `rgb(179, 140, 116)` colored shadow looks like.

```
.boxshadow{ -moz-box-shadow:4px 4px 4px  
4px rgb(179, 140, 116); -webkit-box-  
shadow:4px 4px 4px 4px rgb(179, 140, 116);  
box-shadow:4px 4px 4px 4px rgb(179, 140,  
116) }
```

Background

The CSS property to change the background color of an element to RGB 179, 140, 116 is called "background". The background property can be set on classes, ids or directly on the HTML element.

```
.background, #background, body{  
background: rgb(179, 140, 116) }
```

If only the background color should be changed can be used:

```
.background{ background-color: rgb(179,  
140, 116) }
```

This example shows the color as background, it is applied via the CSS property "background".

To optimize and compress your CSS code, you can use our [online CSS compressor and optimizer](#) based on csstidy. If you want to create a linear or radial gradient as background or border, check our [CSS Gradient Generator](#).

Hey! You found this booklet interesting? Support Converting Colors with the new Membership Option!

The pro membership hides all ads, plus gives you double the colors in the color bucket, and more awesome pro features!

[Learn more, Memberships starting at \\$2.50/m!](#)

**Follow me
on Twitter!**

@ConvertingColor